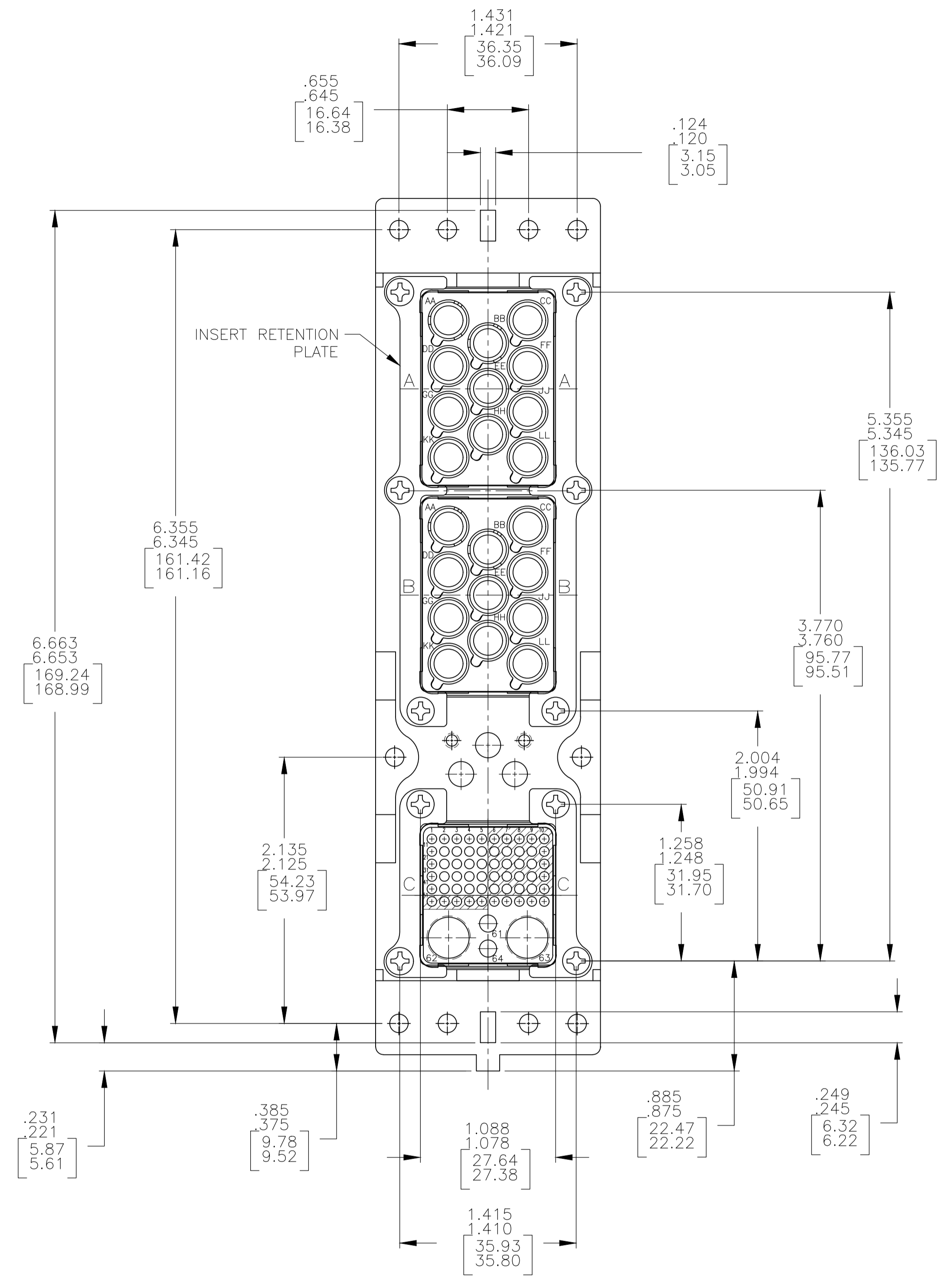
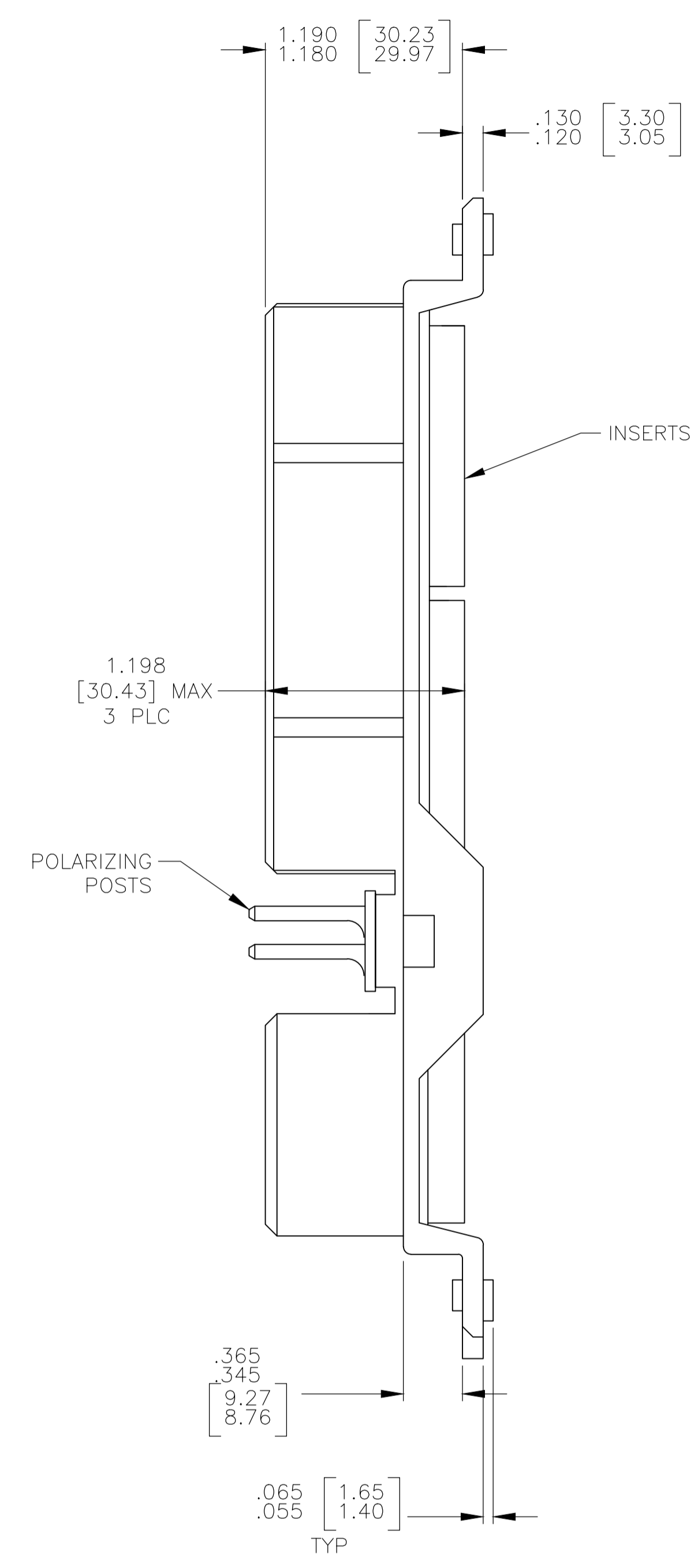
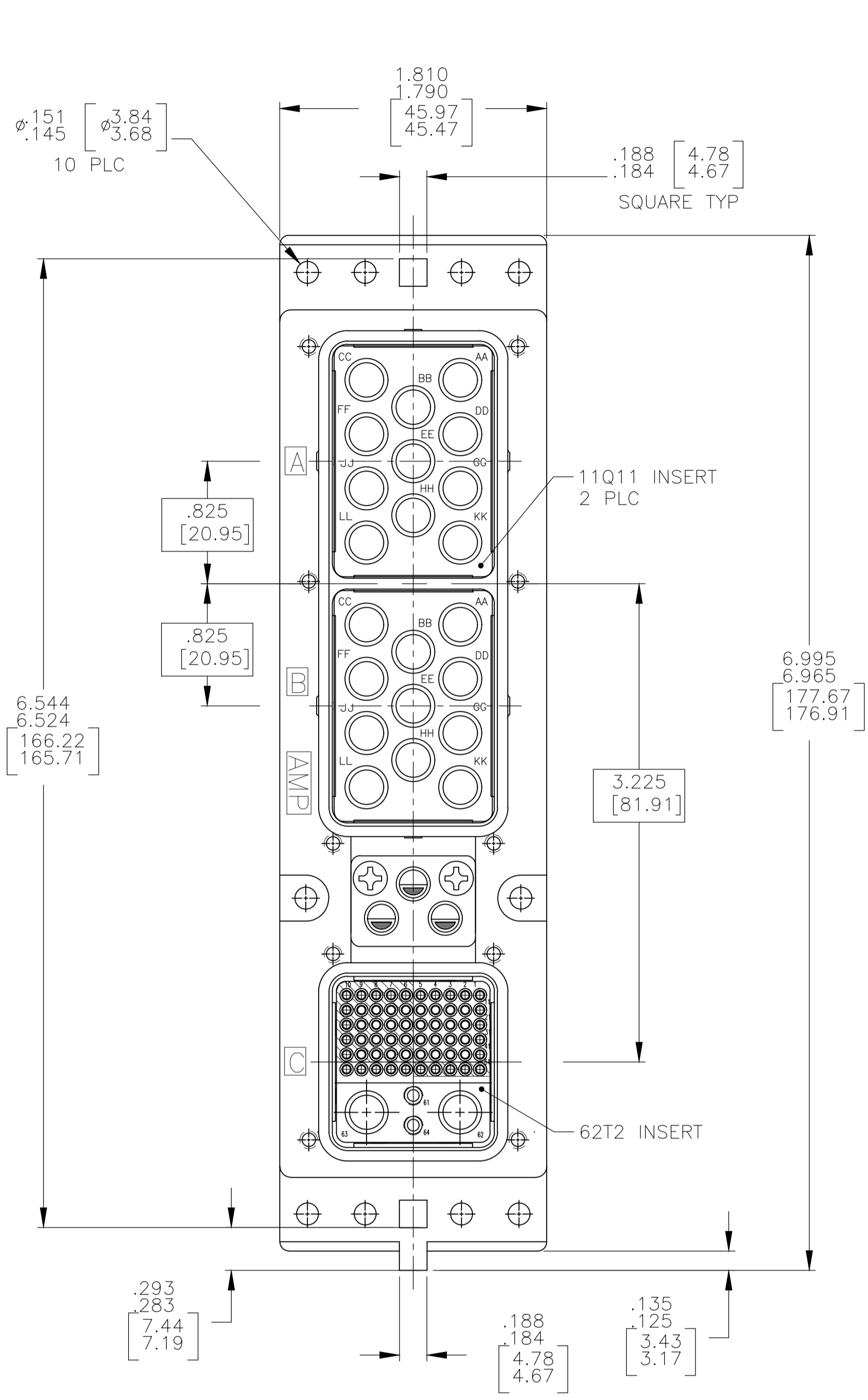


REVISIONS					
P	LTR	DESCRIPTION	DATE	DMN	APVD
C		REVISED PER ECO-17-015513	19DEC2017	PHM	CT



- CONNECTOR DIMENSIONS ARE PER ARINC 600 SPECIFICATION
- KEYING SHOWN IN POSITION "01" FOR REFERENCE ONLY. SEE TABLE FOR KEYING POSITION. FOR POSITION "00" KEYING SHIPPED UNASSEMBLED.

COMPONENT	MATERIAL	FINISH
SHELL	DIE CAST ALUMINUM PER ASTM-B-85	ELECTROLESS NICKEL PER MIL-C-26074 CLASS 3 OR 4, GRADE B
RETENTION PLATES	ALUMINUM ALLOY PER ASTM-B-209	ELECTROLESS NICKEL PER MIL-C-26074 CLASS 3 OR 4, GRADE B
SCREWS	STEEL OR STAINLESS STEEL	PASSIVATED
POLARIZING POSTS	ZINC ALLOY PER ASTM-B-86	ELECTROLESS NICKEL PER MIL-C-26074 CLASS 4, GRADE B
INSERTS	THERMOSET	-
QUADRAX INSERTS	ALUMINUM ALLOY PER ASTM-B-209	ELECTROLESS NICKEL PER MIL-C-26074 CLASS 3 OR 4, GRADE B
POLARIZING POST RETAINING PLATE	ALUMINUM ALLOY PER ASTM-B-209	BLUE ANODIZED PER MIL-A-8625
FILLER PLUGS	ALUMINUM ALLOY PER ASTM-B-211	ELECTROLESS NICKEL PER MIL-C-26074

68	MODULE A & B: SIZE 8 QUADRAX: 1445693-1 (QTY=14) SIZE 8 FILLER PLUG: 448545-3 (QTY=8)	1757139-1
	MODULE C: SIZE 22: 208262-3 (QTY=60) SIZE 16: 208270-2 (QTY=2) SIZE 8 FILLER PLUG: 448545-3 (QTY=1)	
KEYING POSITION	CONTACTS INCLUDED NOT INSTALLED	PART NUMBER
THIS DRAWING IS A CONTROLLED DOCUMENT.		
DIMENSIONS: INCHES		
TOLERANCES UNLESS OTHERWISE SPECIFIED:		
0 PLC ± .005		
1 PLC ± .005		
2 PLC ± .005		
3 PLC ± .005		
4 PLC ± .005		
ANGLES ± .5°		
MATERIAL: SEE TABLE		
FINISH: SEE TABLE		
DIN: C.C.THOMAS 5-24-04		
CHK: S.GLATFELTER 5-24-04		
APVD: S.GLATFELTER 5-24-04		
NAME: PLUG ASSY.SIZE 2,ARINC 600, (11Q11/11Q11/62T2 SPECIAL)		
SIZE: A1		
CAGE CODE: 00779		
DRAWING NO: 1757139		
RESTRICTED TO: -		
WEIGHT: -		
CUSTOMER DRAWING		
SCALE: 1:1		
SHEET: 1 OF 1		
REV: C		