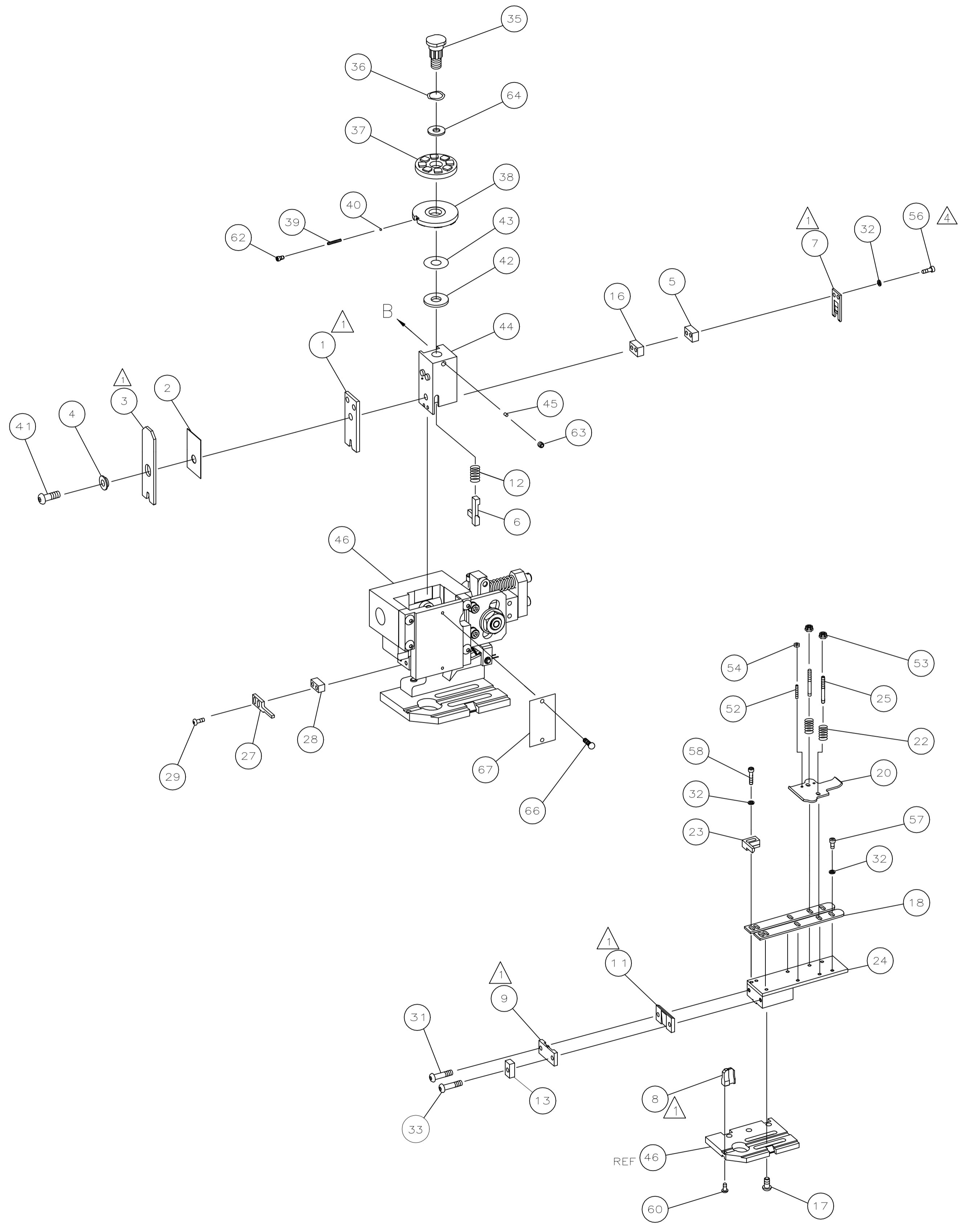


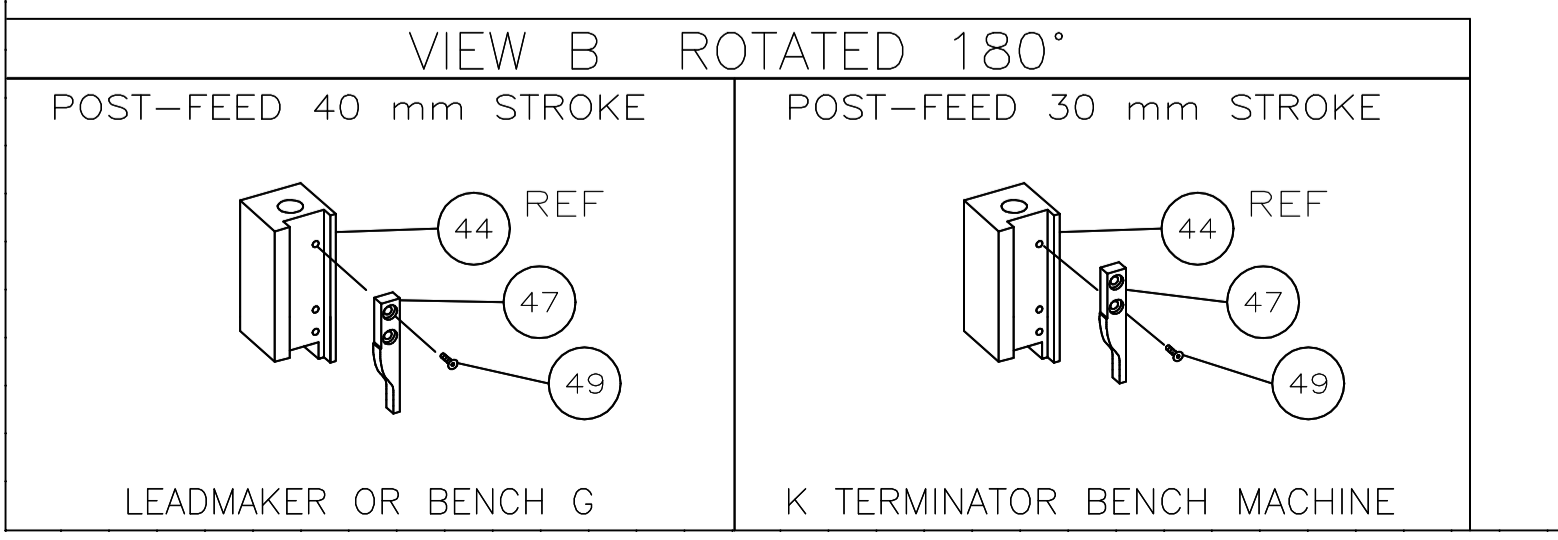
PART NUMBER	REV	FIRST USED	TERMINATOR	FEED TYPE	DESCRIPTION
1339760-1	B		BENCH & LEADMAKER	MECH POST FEED	HD-1 APPLICATOR
7-1339760-1	B		BENCH & LEADMAKER	MECH POST FEED	-1 AND SPARE PARTS
7-1339760-7	B				SPARE PARTS KIT

REVISIONS					
REV	LTR	DESCRIPTION	DATE	OWN	APVD
A1	ECR-11-000733		JAN12		CC
B	ECR-18-018147		27NOV2018	GK	CT

CRIMP DATA AMP TERMINAL AMP CRIMP SPECS			
TERMINAL NAME: FASTON RECEPTACLE			
CRIMP	SIZE	TYPE	RANGE
WIRE	3.56 [.140 IN]	F	2.00-6.00mm ²
INSUL	5.33 [.210 IN]	F	4.06-5.33 [.160-.210 IN]
WIRE STRIP LENGTH		APPL INSTRUCTION	
5.80-6.60 [.228-.260 IN]		408-8323	
TERMINAL APPL SPEC	114-3118		FEED 28.19 [1.110 IN]
TERMINALS APPLIED			
150530	-	-	-
-	-	-	-
-	-	-	-
-	-	-	-
-	-	-	-
-	-	-	-
-	-	-	-
-	-	-	-
WIRE SIZE mm ² AWG	CRIMP HEIGHT	PIN PN AND LENGTH [IN]	
10 AWG	3.00 ±0.05 [.118 ±.002 IN]	1-354778-7 [.2580]	
4.60mm ²	2.87 ±0.05 [.113 ±.002 IN]	2-354778-7 [.2630]	
4.00mm ²	2.64 ±0.05 [.104 ±.002 IN]	4-354778-0 [.2695]	
14 AWG + 16 AWG	2.51 ±0.05 [.099 ±.002 IN]	5-354778-1 [.2750]	
12 AWG or 3.00mm ²	2.48 ±0.05 [.098 ±.002 IN]	5-354778-5 [.2770]	
2.50mm ²	2.31 ±0.05 [.091 ±.002 IN]	6-354778-7 [.2830]	
14 AWG	2.21 ±0.05 [.087 ±.002 IN]	6-354778-9 [.2840]	
-	-	-	
-	-	-	
-	-	-	
-	-	-	
-	-	-	
-	-	-	
-	-	-	



- 1. RECOMMENDED SPARE PARTS.
- 2. GREASE RAM, CAM, CAM FOLLOWER AND FEED ROD LIGHTLY.
- 3. LUBRICATE DAILY PER THE APPLICATOR INSTRUCTION SHEET SUPPLIED WITH THE APPLICATOR.
- 4. CUT TO LENGTH AT ASSY.
- 5. RANGE QUOTED IS THAT OF THE TERMINAL, NOT THE APPLICATOR. CMA LARGER THAN 7839 IS NOT RECOMMENDED.



-	1	1	1339760	PRINT, APPLICATOR LOG SHEET	73	
-	1	1	1338705-2	DOCUMENTATION PACKAGE	71	
					70	
					69	
					68	
-	1	1	461264-1	PLATE, IDENTIFICATION	67	
-	2	2	21017-2	SCR,DRIVE(#2X.19)ID PLATE	66	
					65	
-	1	1	986950-1	WASHER, FLAT PRECISION	64	
-	1	1	3-18031-0	SCR,SKT SET(M6X6)RAM	63	
-	1	1	18023-9	SCR,SKT CAP(M4X6)CP DSC	62	
					61	
-	1	1	18024-7	SCR,BHC(M4X10)ANVIL	60	
					59	
-	2	2	1-18023-3	SCR,SHC(M4X16)HOLD DOWN	58	
-	5	5	1-18023-0	SCR,SHC(M4X8)STRIP GUIDE	57	
-	2	2	1-18023-4	SCR,SHC(M4X2)SLUG BLADE	56	
					55	
-	2	2	18029-1	NUT,HEX(M3)DRAG	54	
-	2	2	986965-1	NUT,HEX SL(M4)DRAG STUD	53	
-	2	2	2-18032-2	SCR,SKT SET(M3X10)DRAG	52	
					51	
					50	
-	1	1	18024-3	SCR,BHC(M3X10)CAM	49	
					48	
-	1	1	1338676-1	CAM, POST-FEED 30 & 40 mm ST	47	
-	1	1	1338662-2	APPLICATOR, BASIC (SUBASSY)	46	
-	1	1	690191-1	PLUG, NYLON	45	
-	1	1	1320998-1	RAM	44	
-	1	1	690125-1	WASHER, LAMINATED	43	
-	1	1	1-690124-3	WASHER, RAM	42	
-	1	1	2-18024-6	SCREW,BHC(M8X25)CRIMPER	41	
-	1	1	23241-1	BALL, STEEL	40	
-	1	1	2-22278-7	SPRING, COMPRESSION	39	
-	1	1	1320922-1	DISC, INSULATION	38	
-	1	1	354777-1	WIRE DISC, PLASTIC	37	
-	1	1	22480-5	WASHER, SPRING	36	
-	1	1	690212-1	POST, RAM	35	
					34	
-	1	1	4-18024-7	SCR,BHC(M4X25)SHEAR PL	33	
-	9	9	18025-2	WASHER,LOCK(M4)SHEAR BL	32	
-	1	1	1-18024-0	SCR,BHC(M4X20)SHEAR PL	31	
					30	
-	2	2	18024-8	SCR,BHC(M4X12)STRIPPER	29	
-	1	1	3-690451-2	SPACER, STRIPPER	28	
-	1	1	240639-1	STRIPPER	27	
					26	
-	2	2	1320906-1	DRAG, STUD	25	
-	1	1	1-1320995-6	PLATE, STRIP GUIDE	24	
-	1	1	240825-8	PLATE, STRIP HOLD DOWN	23	
-	2	2	4-22281-1	SPRING, DRAG	22	
					21	
-	1	1	1338665-1	DRAG, STOCK	20	
					19	
-	2	2	1338663-6	GUIDE, LOWER STRIP	18	
-	4	4	1-18024-8	SCR,BHC(M6X12)STRIP GD PL	17	
-	1	1	1338708-1	SPACER, SLUG BLADE	16	
					15	
					14	
-	1	1	1-690481-0	SPACER, HOLD DOWN	13	
-	1	1	23846-1	SPRING, HOLD DOWN	12	
-	1	1	240833-3	PLATE, REAR SHEAR	11	
					10	
	-	1	1	1-690482-8	PLATE, FRONT SHEAR	9
	1	2	1	1-1333222-0	ANVIL	8
	-	1	1	690474-5	BLADE, SLUG	7
-	1	1	2-455892-4	HOLD DOWN, TERMINAL	6	
-	1	1	5-240641-5	SPACER, SLUG BLADE	5	
-	1	1	238009-1	SPACER, BLOCK CRIMPER	4	
	1	2	1	6-683453-8	CRIMPER, INSULATION	3
-	1	1	1-455888-9	SPACER, CRIMPER	2	
	1	2	1	456411-2	CRIMPER, WIRE	1
-77	-71	-1		PART NO	ITEM NO	
				DESCRIPTION		

THIS DRAWING IS A CONTROLLED DOCUMENT. DWN: M. CLIFFORD 30NOV04
 CHK: -

TE Connectivity

APVD: F. BACKHURST 30NOV04 NAME: END FEED HD-1 APPLICATOR

PRODUCT SPEC: -

APPLICATION SPEC: -

SIZE: A1 CAGE CODE: 00779 DRAWING NO: 1339760

RESTRICTED TO: -

WEIGHT: 0.000000

CUSTOMER DRAWING SCALE: - SHEET 1 OF 1 REV: B

MACHINE REF: HD-1 APPL

CUSTOMER AND ASSEMBLY DRAWING