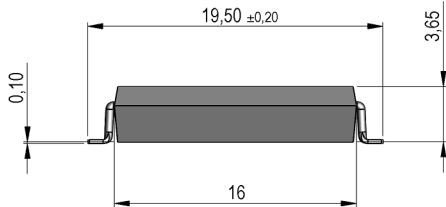
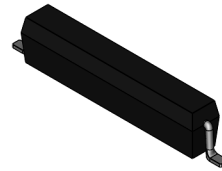


**Dimensions mm[inch]**  
 tolerances according to DIN ISO 2768-m  
 Toleranzen gem. DIN ISO 2768-m



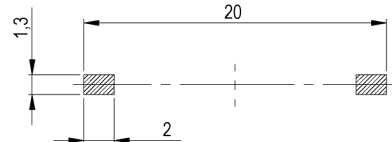
**Isometric**  
 Scale:2:1  
 Maßstab 2:1



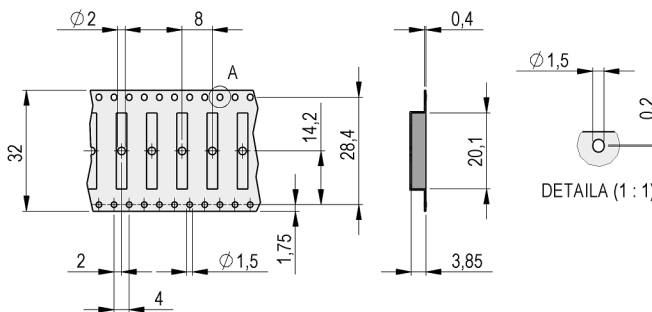
**Marking**  
 according to EN60062/factory code  
 gem. EN60062/Fertigungsstätte

•MK15-B-2-OE YM/P

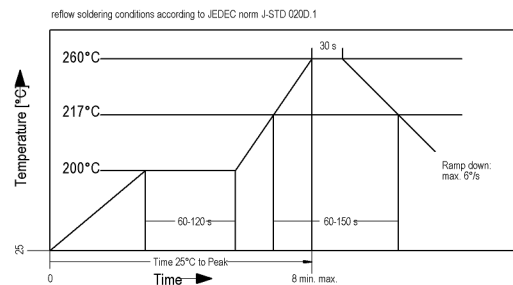
**Recommended PCB Pad Layout**



**Packaging**



**Solder Reflow Profile**



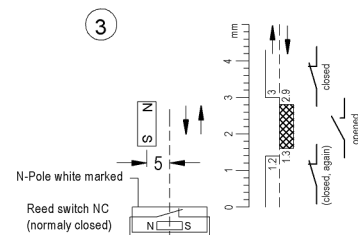
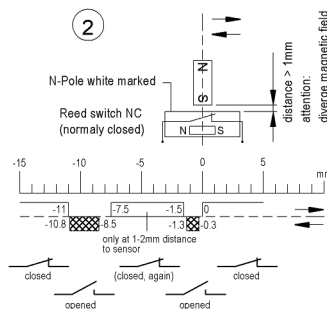
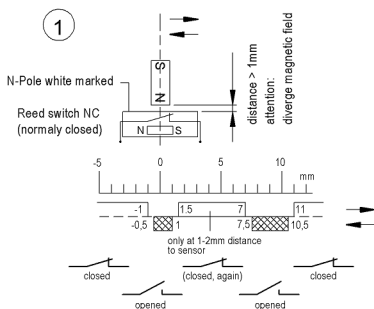
**Magnetic recommendation**

**Notes:**

Min. distance magnet to sensor: 1,0mm  
 Mindestabstand Magnet zu Sensor: 1,0mm

In case of direct contact with the magnet, the sensor can change his sensitivity!  
 Direkte Berührung mit dem Betätigungsmagnet kann die Empfindlichkeit verändern!

The North-pole is marked with a white point.  
 Der Nord Pol ist mit einem weißen Punkt markiert.





Europe: +49 / 7731 8399 0 | Email: info@standexmeder.com  
 USA: +1 / 508 295 0771 | Email: salesusa@standexmeder.com  
 Asia: +852 / 2955 1682 | Email: salesasia@standexmeder.com

Item No.:  
**9150100022**  
 Item:  
**MK15-B-2-OE**

Magnetic properties	Conditions	Min	Typ	Max	Unit
Pull-In	at 20°C	15		45	
Drop out	at 20°C	10		35	
Test equipment		KMS-11			
Pull-In in milliTesla (modified conta	MS150 - phys. caused tolerance +/- 0,1mT	0,8		2,1	mT
Drop-Out in milliTesla (modified co	MS150 - phys. caused tolerance +/- 0,1mT	0,6		1,7	mT
Test equipment		MS-150			

Contact data 66/1	Conditions	Min	Typ	Max	Unit
Contact-form		B - NC			
Contact rating	Any DC combination of V & A not to exceed their individual max.'s			10	W
Switching voltage	DC or Peak AC			180	VDC
Carry current	DC or Peak AC			1,25	A
Switching current	DC or Peak AC			0,5	A
Contact resistance static	Measured with 40% overdrive Start Value			150	mOhm
Breakdown voltage (>20 AT)	according to IEC 255-5	200			VDC

Special Product Data	Conditions	Min	Typ	Max	Unit
Housing material		mineral-filled epoxy			
Remark		no direct touch between sensor and strong magnets!			

Technical data	Conditions	Min	Typ	Max	Unit
Packaging		1.500 pcs / Reel			

Environmental data	Conditions	Min	Typ	Max	Unit
Shock	1/2 sine wave duration 11ms			30	g
Vibration	from 10 - 2000 Hz			20	g
Ambient temperature		-40		130	°C
Storage temperature		-50		130	°C
Cleaning		fully sealed			

Modifications in the sense of technical progress are reserved

Designed at: 19.11.07 Designed by: THAUKE  
 Last Change at: 30.08.18 Last Change by: THAUKE

Approval at: 03.01.08 Approval by: JHEYDER  
 Approval at: 31.08.18 Approval by: DKUECHLER

Rev. No.: 7