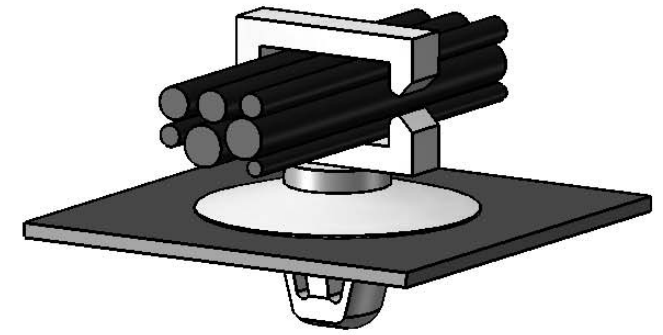
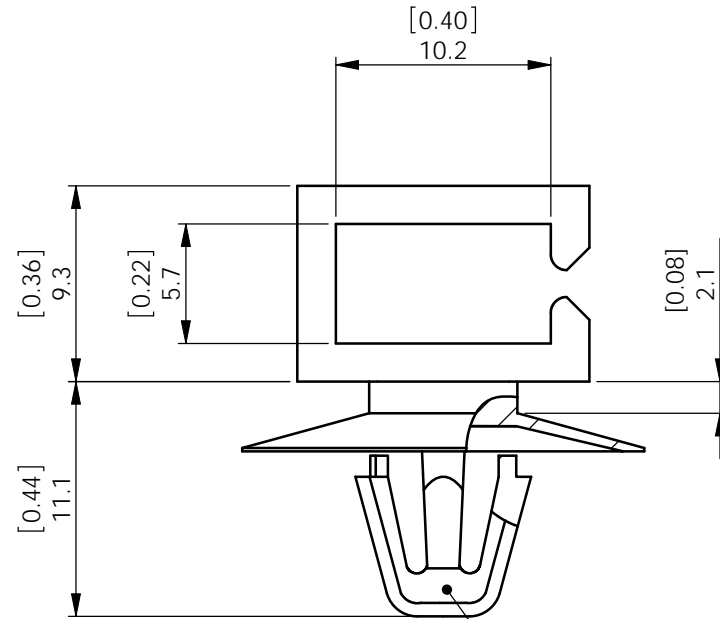
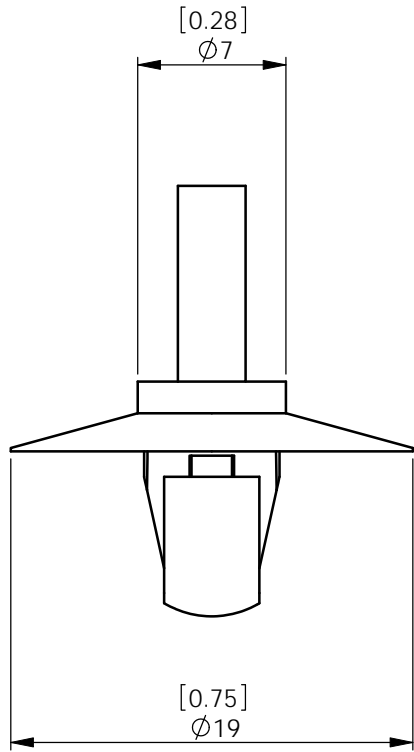
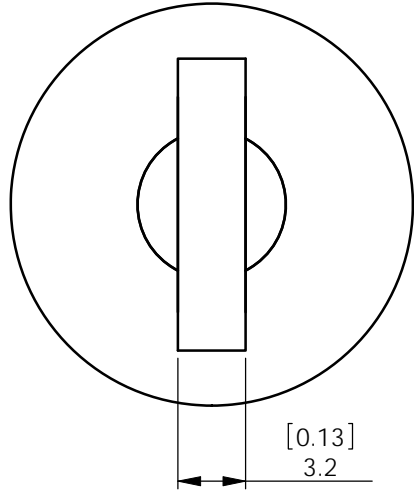


REV.	MODIFICATION.	DATE	DRN
05	ECN2008-023	04/02/08	TC
06	CO2010352	29/08/08	SF
07	CO2010992	15/09/10	SF



APPLICATION VIEW

TO SNAP LOCK IN A  $\phi 6.5$   $\pm 0.08$  HOLE INTO A 0.8-1.6 THICK PANEL



PART NUMBER	MATERIAL
WS-SE-A-4-01	NYLON 6/6 UL94 V-2(RMS-01)
WS-SE-A-4-109	NYLON 4/6 UL94 V-2 HEAT STAB(RMS-109)

INFORMATION CONTAINED IN THIS DOCUMENT IS CONFIDENTIAL TO RICHCO INTERNATIONAL Co. Ltd. AND MAY NOT BE DISCLOSED OR REPRODUCED IN WHOLE OR PART WITHOUT THEIR WRITTEN CONSENT.

**RICHCO, INC.**  
WWW.RICHCO-INC.COM

ALL DIMENSIONS IN mm & [INCH]  
GENERAL TOLERANCES  $\pm 0.25$  [0.010]  
UNLESS OTHERWISE STATED  
1 DECIMAL PLACE  $\pm 0.25$  [0.010]  
2 DECIMAL PLACES  $\pm 0.10$  [0.004]  
ANGULAR  $\pm 1^\circ$

THIRD ANGLE

MATERIAL: SEE TABLE      COLOR: NATURAL

DESCRIPTION: EDGE WIRE SADDLE CUPPED ARROWHEAD      PART No: WS-SE-A-4-XX

DRG No: 04-087	NPR No: 2004-118 & 349	Mass:(g) 0.7	SHEET SIZE A4
DRN OW	DATE 20/04/04	CHKD NJB	DATE 23/08/04
	SCALE NTS		SHEET No. 1 OF 1

FORM No. 0178/00