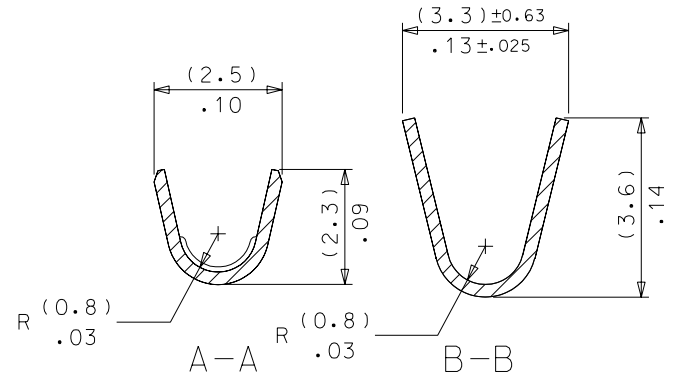
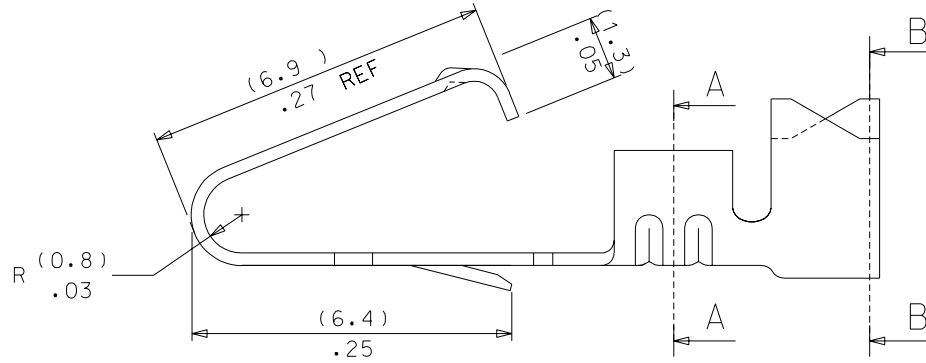
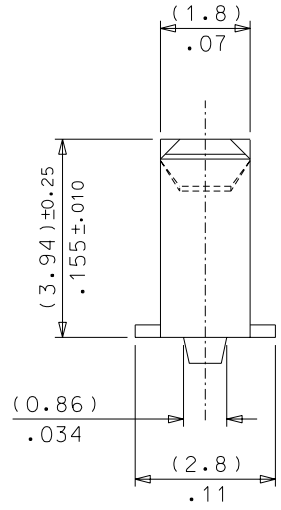
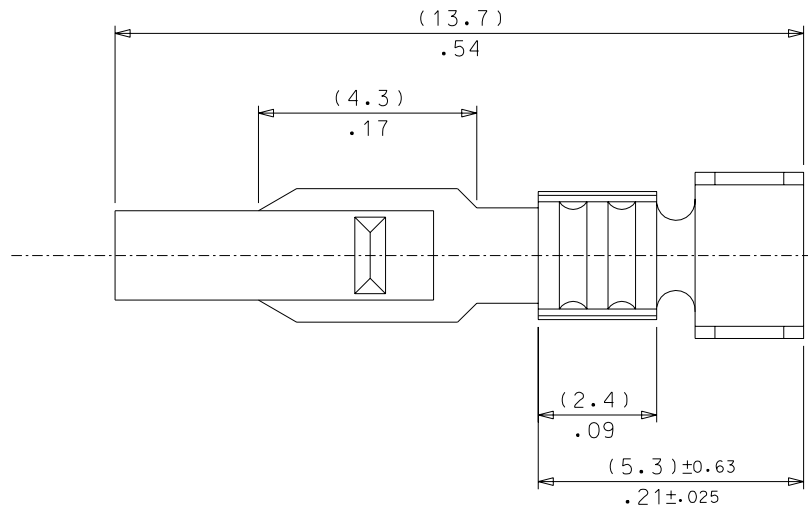


PART NO. SEE CHART  
 ENG. NO. SD-8993-(\*\*\*\*)\*

NOTES:

1. CRIMP FOR 18-24 AWG WIRE (2.79)/.11 MAX INSUL DIA
2. CODE LETTER PRECEDING PART No. DESIGNATES MFG LOC'N I=IRELAND
3. MATERIAL: (0.25)/.010 THICK BRASS
4. THIS PART CONFORMS TO MOLEX PROD. SPEC. 99020-0087



PART No.	ENG No.	FORM	FINISH
08-50-0011	8993-(P125)	CHAIN	(P125) HOT TIN DIP
NOT TOOLED	8993-(P125)L	LOOSE	.000100/.000250 (PRE PLATE)
I 08-50-0277	8993-(P902)	CHAIN	(P902) HOT TIN DIP
I 08-50-0276	8993-(P902)L	LOOSE	.000040/.000100 FOR INT'L USE ONLY (PRE PLATE)

CHANGED PLATING CODES  
 EC NO. E2004-0036  
 DRWN: PSHEAHAN 03/07/14  
 CHK: / / /  
 APPR: / / /

QUALITY SYMBOLS  
 MAJOR =  
 CRITICAL =

GENERAL TOLERANCES:  
 (UNLESS SPECIFIED)

	mm	INCH
4 PLACES	±0.	±.
3 PLACES	±0.	±.010
2 PLACES	±0.20	±.014
1 PLACE	±0.30	±.

ANGULAR: ± 1/2°

DRAFT WHERE APPLICABLE MUST REMAIN WITHIN DIMENSIONS

SCALE 10:1  
 DESIGN UNITS  
 mm  INCH  
 DRAWN BY & DATE  
 T. MAHON 98/10/26  
 CHECKED BY & DATE  
 M. GOONEY / /  
 APPROVED BY & DATE  
 MWILHITE / /

THIRD ANGLE PROJECTION  
 DIMENSIONS:  
 mm  INCH  
 mm  ONLY  
 SHT REV  
 REVISE ON CAD ONLY

TITLE: TERMINAL, CRIMP STYLE

MOLEX INCORPORATED

CAD FILENAME: S8993X1.DGN  
 MATERIAL NO. SEE CHART  
 DRAWING NO. SD-8993-\*\*\*\*  
 SHEET NO. 1 OF 1

THIS DRAWING CONTAINS INFORMATION THAT IS PROPRIETARY TO MOLEX INCORPORATED AND SHOULD NOT BE USED WITHOUT WRITTEN PERMISSION.