

C. Wesley 11-20-91
 DESCRIPTION APP'D./DATE REV

SAFETY ORGANIZATION(S)

THIS FILTER HAS BEEN FORMALLY RECOGNIZED, CERTIFIED OR APPROVED BY THE LISTED AGENCY. THEREFORE, ALL TEST/REQUIREMENTS SPECIFIED IN THE LATEST REVISION OF THE FOLLOWING AGENCY STANDARDS HAVE BEEN MET.

UL 544
 CSA 22.2, NO. 0, 0, 4, B
 VDE 0565-3, 0625

OPERATING SPECIFICATIONS

LINE VOLTAGE/CURRENT,
 10 AMP., 120/250 VAC
 10 AMP./40°C, 250 VAC
 50-60Hz
 LINE FREQUENCY,
 30°C
 MAX. CASE RISE & RATED CURRENT,
 2μA at 120V 60 Hz
 MAX. LEAKAGE CURRENT, EACH
 LINE TO GROUND
 5μA at 250V 50 Hz
 OPERATING AMBIENT TEMP. RANGE,
 -10°C TO +40°C @ RATED CURRENT, I_r
 IN AN AMBIENT, T_a, HIGHER THAN 40°C, THE MAXIMUM OPERATING
 CURRENT, I_o, IS AS FOLLOWS:

$$I_o = I_r \sqrt{\frac{85 - T_a}{45}}$$

RELIABILITY SPECIFICATIONS

STORAGE TEMPERATURE,
 -40°C TO +85°C
 HUMIDITY,
 21 DAYS @ 40°C 95% RH
 CURRENT OVERLOAD TEST,
 6 TIMES RATED CURRENT FOR 8 SECONDS

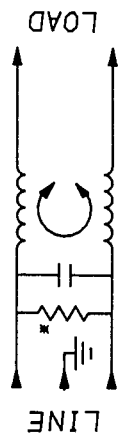
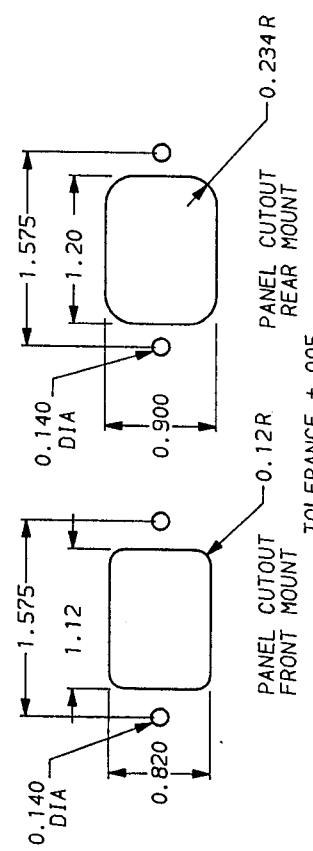
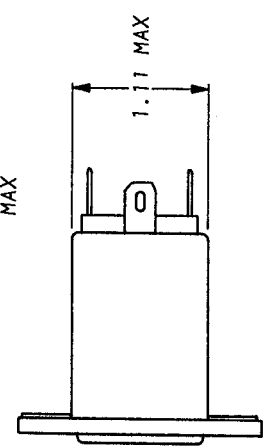
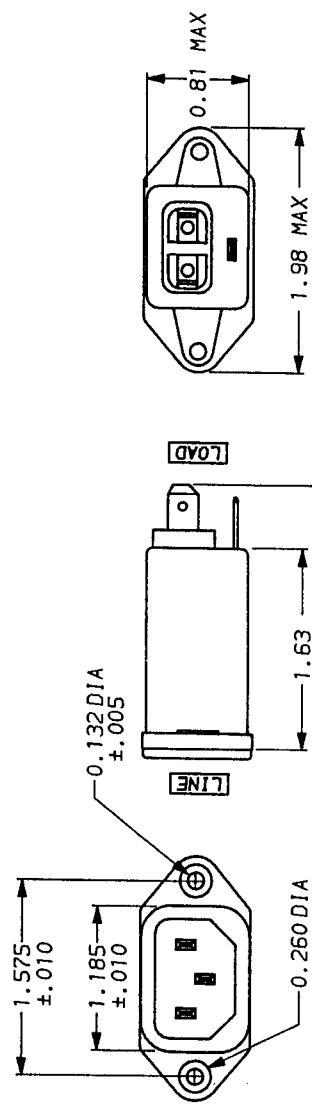
TEST SPECIFICATIONS

INDUCTANCE,
 .35 mH NOMINAL
 CAPACITANCE, (MEASURED @ 1 KHz, 0.25 VAC MAX., 25°C ±1°C)
 ZERO
 LINE TO GROUND,
 ZERO
 LINE TO LINE,
 .047μF ±20%
 DISCHARGE RESISTOR,
 1.5 MΩ
 LINE/GROUND AND LINE/LINE
 6000 MΩ (MIN) AT 100 VDC
 INSULATION RESISTANCE
 20°C AND 50% RH
 (H/O DISCHARGE RESISTOR)

RECOMMENDED RECEIVING INSPECTION HIPOTL.

LINES TO GROUND,
 1500 VAC FOR 1 MINUTE
 LINE TO LINE,
 1450 VDC FOR 1 MINUTE

FILTER APPROVAL,
 THE BEST WAY TO SELECT AND QUALIFY A FILTER IS FOR YOUR ENGINEERING
 TO TEST THE UNIT IN YOUR EQUIPMENT.



FREQUENCY MHZ	50n - 50n (MINIMUM) INSERTION LOSS					
	.15	.50	1	5	10	30
COMMON dB	3	8	12	12	12	12
DIFF. dB	1	10	18	30	31	31

This document is proprietary to CORCOM INC. and is not to be reproduced nor used for manufacturing purposes except on CORCOM's order or prior written consent.

TOLERANCE EXCEPT AS NOTED
 DECIMAL, .XXX .XX .X ANGLES
 ENGLISH, ±.025 ± 1°
 METRIC, ±

MATERIAL:
 AS SUPPLIED

FINISH:
 AS SUPPLIED



POWER LINE FILTER

SCALE DATE DRG. NO.
 NTS 9-19-91
 DESIGNED BY ORIGINATOR
 CFM CFM
 REV. 10EBH1.01

*RESISTOR ADDED TO PRODUCT BUILT AFTER 3-30-92 (9212).