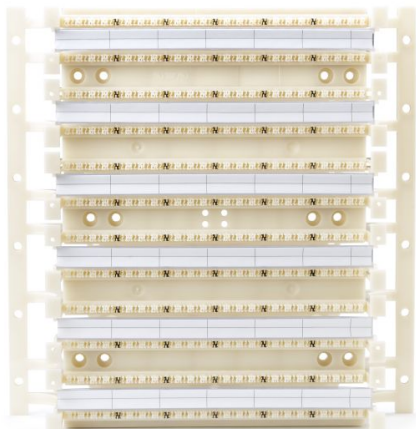


Specification Sheet

Part Number: T110WBL288



Category 6 288 Pair 110 Wiring Block Base with Legs, 1/box

Article Number

853-19232

Type

T110WBL288

Features & Benefits

- Flexible design allows a standard punch down tool or HellermannTyton's 4 pair, Category 6 -110 tool can be used to terminate the blocks.
- Standoff legs for easy wall mounting and ability to run cable behind the blocks.

Product Description

Category 6 - 110 wiring blocks are designed to support Category 6 cabling applications as specified in ANSI/TIA-568-B-C with unique spacing that provides superior NEXT performance. These wiring blocks can be used as a consolidation point in HellermannTyton's GigaBand channel. . They are available in a number of different configurations for specific connectivity applications. ETL tested and approved for Component Compliance.

Short Description

Category 6 288 Pair 110 Wiring Block Base with Legs, 1/box

Global Part Name

T110WBL288

Technical Description

288 Pair Category 6 Wiring Block Base with Legs

UL Listed (US and Canada)

Yes

UL Listed (US

Yes

Package Quantity(Imperial)

1

Package Quantity (Metric)

1

Customs Number

9030400000