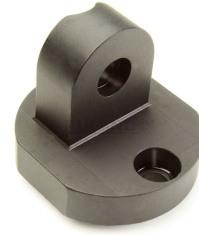
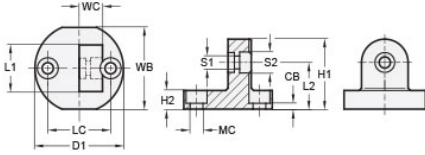




## MT10:12-CBSW-20-AN

Ruland Swivel Clamp Connector Base, Ruland Swivel Thru Hole 5.5mm, Clamp Width 20mm, Clamp Screw M5, Black Anodized Aluminum



### Description

Ruland MT10:12-CBSW-20-AN is a swivel clamp connector base with a 35mm base width, 38mm base diameter, 20mm clamp width, M5 clamp screw, and 30mm overall length. It is designed to fit with MT10, MT12, and MT10:12 swivel clamp joints, t-swivel clamp joints, and swivel mounts with the same width and height. When combined with a swivel clamp or connector MT10:12-CBSW-20-AN is an ideal articulating mounting solution for screens, sensors, reflectors, plexiglass machine guards, and other components that require frequent adjustments. An MT10:12-SWALK-M5-20 adjustable clamping handle can be used to join it to clamps and connectors for rapid repositioning without the use of tools. It is aluminum with a black anodized finish and screws are 304 stainless steel for added corrosion resistance when compared to unplated types. MT10:12-CBSW-20-AN can be permanently installed on extruded aluminum frames, sheet metal, and other surfaces using M5 hardware or the user can opt for portability by using MAGNET-43-27 magnetic base. It is manufactured by Otto Ganter, inventoried by Ruland, and RoHS3 compliant.

### Product Specifications

<b>Base Width WB</b>	35 mm	<b>Base Height H2</b>	8 mm
<b>Base Diameter D1</b>	38 mm	<b>Clamp Length L1</b>	20 mm
<b>Clamp Width WC</b>	10 mm	<b>Overall Height H1</b>	30 mm
<b>Center To Center LC</b>	27 mm	<b>Edge To Center L2</b>	20 mm
<b>Mounting Counterbore Diameter MC</b>	M5	<b>Counterbore to Base CB</b>	2.5 mm
<b>Swivel Counterbore 1 Diameter S1</b>	5.5 mm	<b>Swivel Counterbore 2 Diameter S2</b>	9 mm
<b>Material Specification</b>	Anodized Aluminum	<b>Manufacturer</b>	JW Winco/ Otto Ganter
<b>Country of Origin</b>	Germany	<b>Weight (lbs)</b>	0.071700
<b>UPC</b>	634529231401	<b>Tariff Code</b>	7609.00.0000
<b>UNSPC</b>	31162908		