

ITEM	PART#	DESCRIPTION	QTY	UOM
A	874390500	1.5mm Rcpt Hsg Nyl Nat 5Ckt	1	PC
B	874210000	1.5mm Rcpt Term Crim 2.5Sn	5	PC
C	--	PAPER PRINTED PAPER WHITE	1	PC

FROM	TO	DESCRIPTION	COLOR
A1	--	1X24AWG DISC SR-PVC BK UL10002	BLACK
A2	--	1X24AWG DISC SR-PVC BK UL10002	BLACK
A3	--	1X24AWG DISC SR-PVC BK UL10002	BLACK
A4	--	1X24AWG DISC SR-PVC BK UL10002	BLACK
A5	--	1X24AWG DISC SR-PVC BK UL10002	BLACK

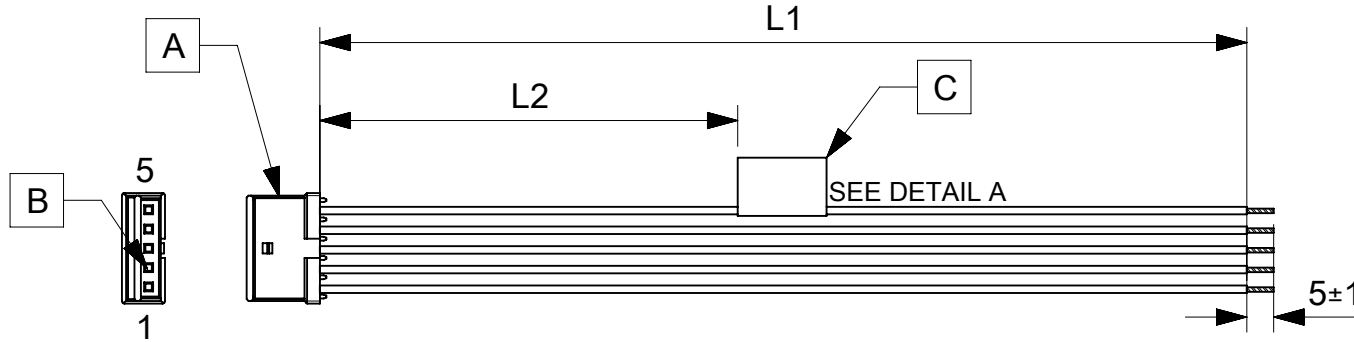


TABLE			
PART NUMBER	L1	L2 (REF)	TITLE
2183971050	50±3	13	PICO-SPOX 1.5 R-S 5CKT 50MM DISC Sn
2183971051	100±5	38	PICO-SPOX 1.5 R-S 5CKT 100MM DISC Sn
2183971052	150±8	63	PICO-SPOX 1.5 R-S 5CKT 150MM DISC Sn
2183971053	300±10	138	PICO-SPOX 1.5 R-S 5CKT 300MM DISC Sn
2183971054	600±10	288	PICO-SPOX 1.5 R-S 5CKT 600MM DISC Sn

NOTES

- Free ends must be stripped, twisted & tinned. The length of tinning is 5±1mm. Tinning dia must be 0.75mm Max.
- Connector view shown is from mating side.
- Label text must be 2mm max. in height with Arial font.
- Label must be wrapped in Flag type on a single cable.

MOLEX P/N
MOLEX
BATCH WK/YR
DETAIL A

REVISION			
DATE	REV	DESCRIPTION	CHANGER
27/05/2021	A	INITIAL RELEASE	ARAJU

FUNCTIONAL SYMBOLS $\frac{E}{A} = 0$ $\frac{E}{E} = 0$ $\frac{E}{P} = 0$ DIVISIONAL SYMBOLS	THIS DRAWING CONTAINS INFORMATION THAT IS PROPRIETARY TO MOLEX ELECTRONIC TECHNOLOGIES, LLC AND SHOULD NOT BE USED WITHOUT WRITTEN PERMISSION		CURRENT REV DESC:		
	DIMENSION UNITS	SCALE	EC NO: 665607		
	mm	NTS	DRWN: ARAJU 2021/05/27		
	GENERAL TOLERANCES (UNLESS SPECIFIED)		CHK'D: RDESAI01 2021/05/31		
ANGULAR TOL ± °		APPR: RDESAI01 2021/05/31		PRODUCT CUSTOMER DRAWING	
4 PLACES ±		INITIAL REVISION:		DOCUMENT NUMBER	DOC TYPE
3 PLACES ±		DRWN: ARAJU 2021/05/27		2183971050	PSD
2 PLACES ±		APPR: RDESAI01 2021/05/31		000	REVISION
1 PLACE ±		MATERIAL NUMBER		GENERAL MARKET	A
0 PLACES ±		SERIES		SEE TABLE	SHEET NUMBER
DRAFT WHERE APPLICABLE MUST REMAIN WITHIN DIMENSIONS		THIRD ANGLE PROJECTION	DRAWING	A4-SIZE	218397

DOCUMENT STATUS	P1	RELEASE DATE	2021/05/31	12:34:35
-----------------	----	--------------	------------	----------