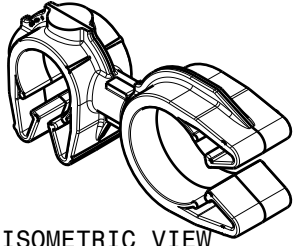
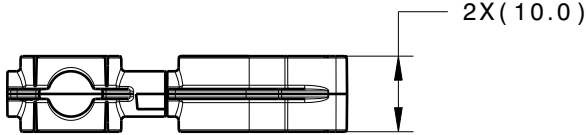
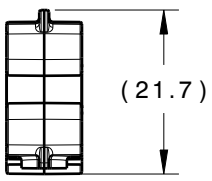
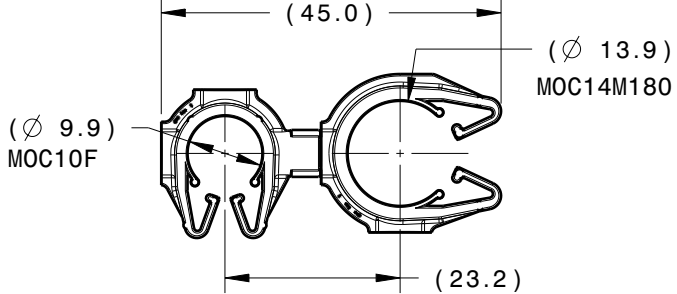


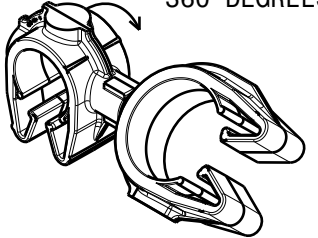
Revision Level			Revision Record	Changed	Date	Approved	Date
Drawing	State	Part					
A.0	In Work	-	SEE ECN# 014503	TAT	6/28/18	EJH	6/28/18



ISOMETRIC VIEW



CLIPS ROTATE 360 DEGREES



ISOMETRIC VIEW ROTATED

TYPE	MOC10F	MOC14M180
HARNESS	10.0MM-11.5MM	13.0MM-15.0MM
HOSE	9.5MM-11.5MM	13.0MM-15.0MM
HARD PIPE/TUBE	10.0MM-11.5MM	14.0MM-15.8MM

\*RECOMMENDED SIZES MAY DIFFER DEPENDING ON THE APPLICATION, PRODUCT REQUIREMENTS AND MATERIALS USED

\*\*PATENT PENDING 29/582,271\*\*

GLOBAL PART DESCRIPTION	MOC10F**			MOC14M180**		
	DRAWING	MATERIAL	COLOR	DRAWING	MATERIAL	COLOR
MOC10FMOC14M180-PAG6HIRHSUV-BK	16-0318-000-	PAG6HIRHSUV	BLACK	16-0320-000-	PAG6HIRHSUV	BLACK

Material	Units	millimeters	CSU	Drawn	TAT	6/27/18	Article/Type-No	MOC10FMOC14M180	Scale	1:1
SEE CHART	Tolerance defined on each dimension	The copyright of this drawing is reserved by HellermannTyton. It is issued on condition that it is not reproduced, copied or disclosed to a third party, either wholly or in part, without the consent of HellermannTyton.	Approved	EJH	6/27/18	Title			Project Number	
COLOR: SEE CHART						10MM MOC COUPLED TO A 14MM MOC			16-0330	
			North America Email: corp@htamericas.com Web: www.hellermann.tyton.com			Drawing-No PRODUCTION : Phase <b>16-0330-342-CSU</b>			Format AH Sheet 1/1	