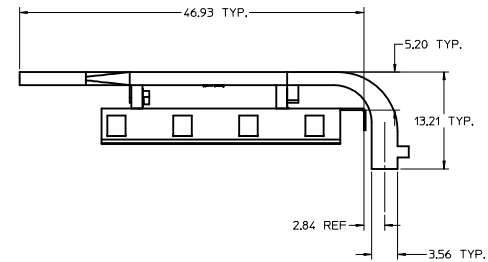
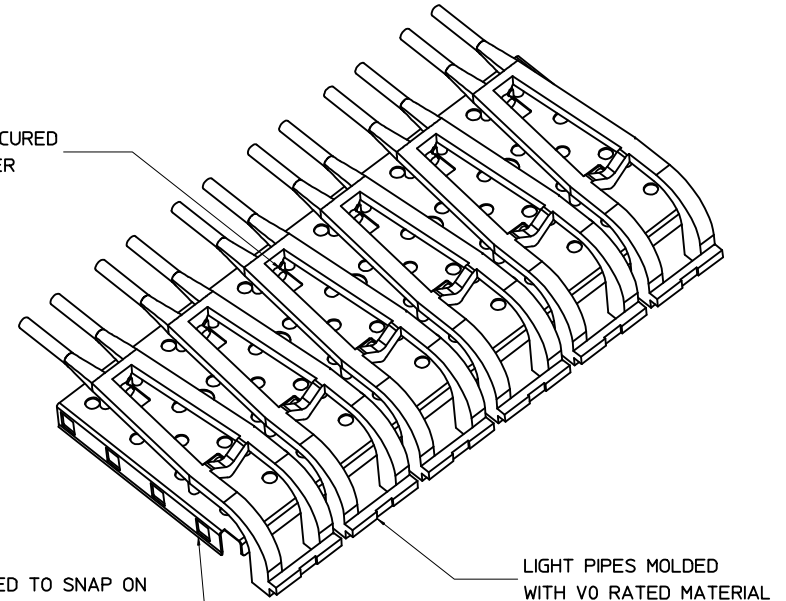


LIGHT PIPES SECURED TO METAL COVER

COVER DESIGNED TO SNAP ON THE SFP CAGE ASSEMBLY



NOTE:

1. MATERIAL:

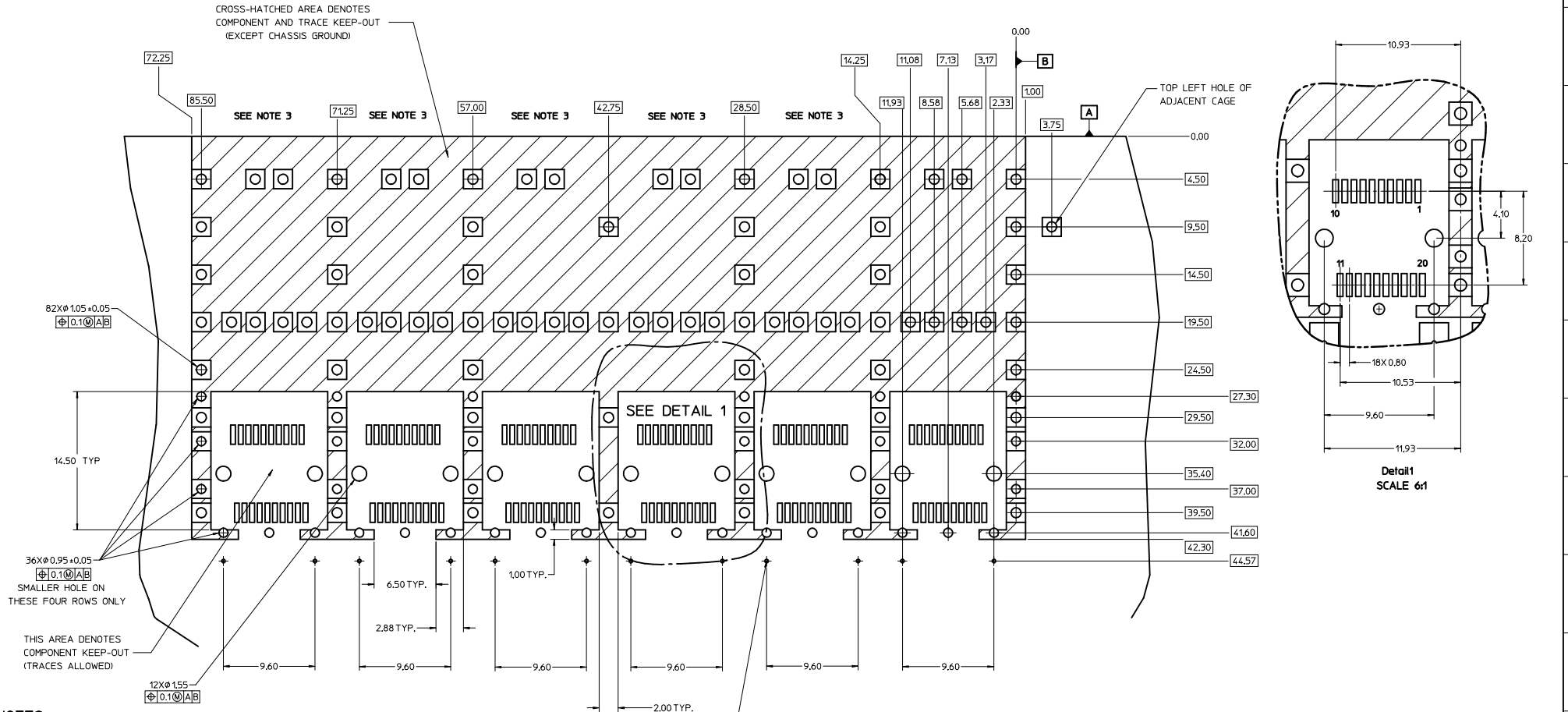
LIGHT PIPE: LEXAN 940A (CLEAR)
 LIGHT PIPE COVER: 0.25 ±0.013 COPPER ALLOY

1. PCB THICKNESS VARIATION MUST BE CONSIDERED WHEN DETERMINING BEZEL OPENING, SIZE LOCATION.
2. DIMENSIONS RELATED TO THE BEZEL/CAGE, ON THE TOP SIDE OF THE PCB ARE TYPICAL ON THE BOTTOM SIDE OF THE PCB.
3. NO RoHS EXEMPTIONS.

SEE REVISION TABLE EC NO: CP02016-0295 DRAWN BY: DRWNEWANG07 2015/07/21 CHKD BY: CHYKORCHEN08 2015/08/11 APPR: RCHEN08 2015/08/12	QUALITY SYMBOLS ▽=0 ▽=0 ▽=0	GENERAL TOLERANCES (UNLESS SPECIFIED)		DIMENSION STYLE		SCALE 3:1	DESIGN UNITS METRIC	THIRD ANGLE PROJECTION
		mm	INCH	MM ONLY	DATE			
		4 PLACES ±	----	+	----			
		3 PLACES ±	----	+	----			
		2 PLACES ±	0.13	+	----			
		1 PLACE ±	0.25	+	----			
		0 PLACE ±	----	+	----			
		ANGULAR ±		----	----			
DRAFT WHERE APPLICABLE MUST REMAIN WITHIN DIMENSIONS		SIZE D	MATERIAL NO. 747480001		DATE 2004/07/08		TITLE 1X6 SFP LIGHT PIPE ASSEMBLY, BACK-TOP	
		DOCUMENT NO. SD-74748-001		SHEET NO. 1 OF 5		molex		

PCB LAYOUT FOR BELLY TO BELLY MOUNTING

HOST CONNECTOR DETAIL



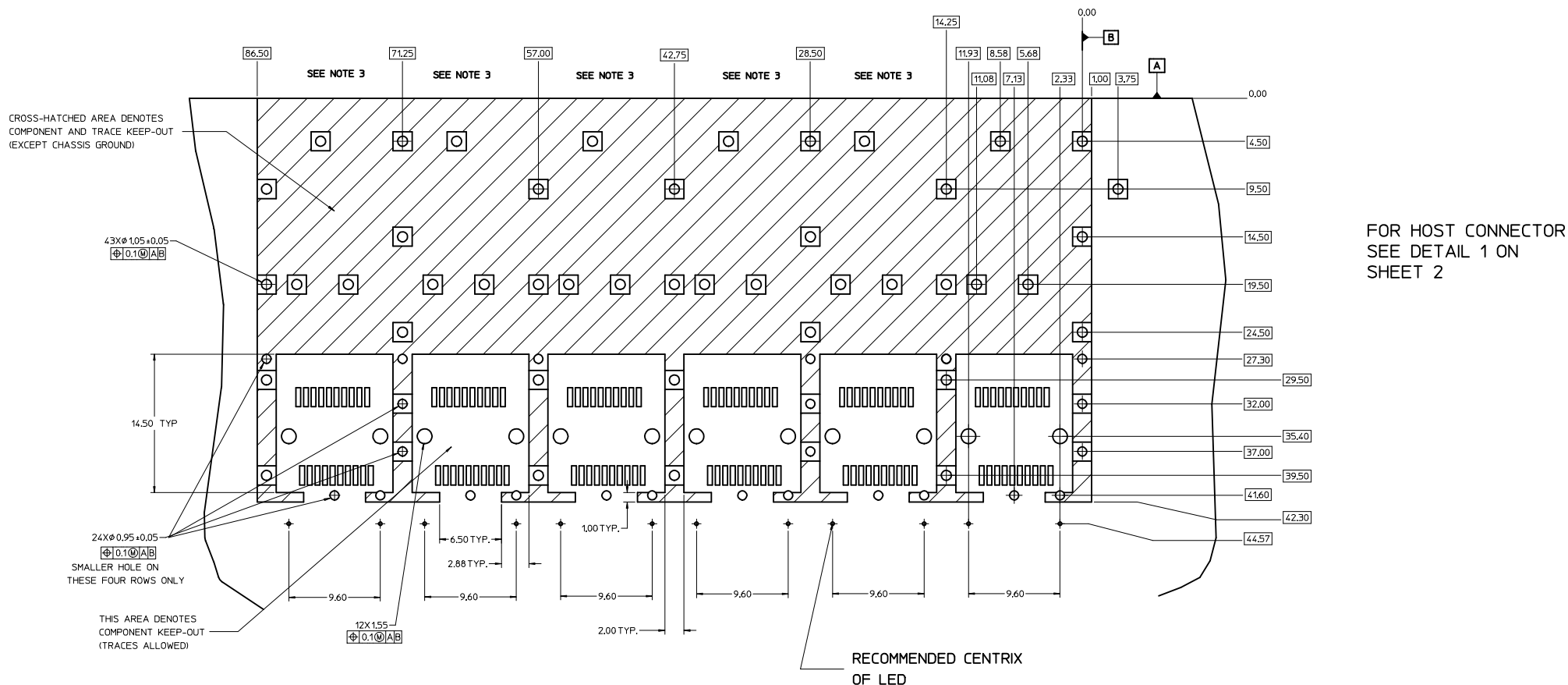
NOTES:

1. PADS AND VIAS CONNECT TO CHASSIS GROUND, (94 PLACES).
RECOMMENDED PADS TO BE 2mm SQUARE.
2. PLATING OPTIONAL FOR THROUGH HOLES (X PLACES)
3. RECOMMENDED PLATING INCLUDES HASL, IMMERSION (GOLD, SILVER, OR TIN), AND OSP.
4. HOLE PATTERN REPEATS FOR EACH PORT,
SPACING BETWEEN PORTS IS 14.25mm
5. CONNECTOR PAD LAYOUT PER SFP MSA. WILL ACCOMODATE MOLEX
CONNECTOR SERIES 74441 OR EQUIVALENT.
6. LEDS SHOULD BE PLACED RELATIVE TO THE SFP CONNECTOR POST HOLES.
7. DETAILS APPLY TO EACH PORT.

RECOMMENDED CENTRIX
OF LED

SEE REVISION TABLE	QUALITY SYMBOLS	GENERAL TOLERANCES (UNLESS SPECIFIED)	DIMENSION STYLE	SCALE	DESIGN UNITS	THIRD ANGLE PROJECTION	TITLE
EC NO: CPG2016-0295 DRAWN BY: 2015/07/21 CHKD BY: 2015/08/11 APPROVED BY: 2015/08/12	▽=0 ▽=0 ▽=0	mm INCH	MM ONLY	5:1	METRIC		1X6 SFP LIGHT PIPE ASSEMBLY, BACK-TOP
		4 PLACES ± --- ± --- 3 PLACES ± --- ± --- 2 PLACES ± 0.13 ± --- 1 PLACE ± 0.25 ± --- 0 PLACE ± ± ---	DRAWN BY: DATE KSI MONSO 2004/07/08 CHECKED BY: DATE BRUSSELL 2004/07/08 APPROVED BY: DATE BRUSSELL 2004/07/08				
		ANGULAR ± --- ° DRAFT WHERE APPLICABLE MUST REMAIN WITHIN DIMENSIONS	MATERIAL NO: 747480001		DOCUMENT NO: SD-74748-001		SHEET NO: 2 OF 5
<p style="text-align: center; font-size: small;">THIS DRAWING CONTAINS INFORMATION THAT IS PROPRIETARY TO MOLEX INCORPORATED AND SHOULD NOT BE USED WITHOUT WRITTEN PERMISSION</p>							

PCB LAYOUT FOR SINGLE SIDE MOUNTING



FOR HOST CONNECTOR
SEE DETAIL 1 ON
SHEET 2

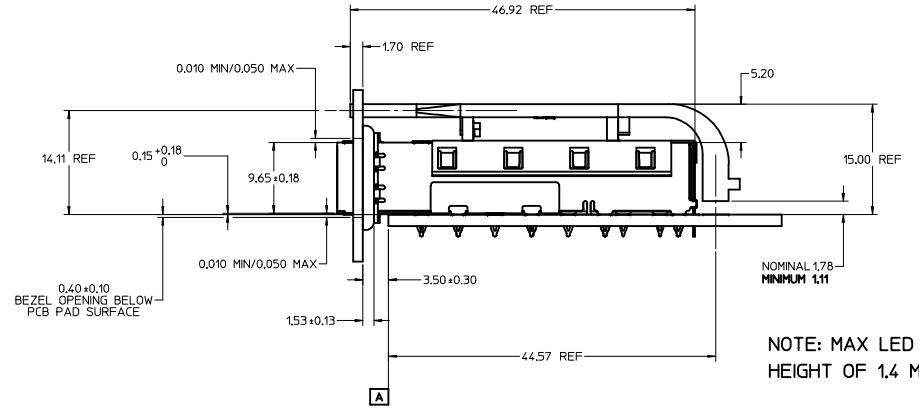
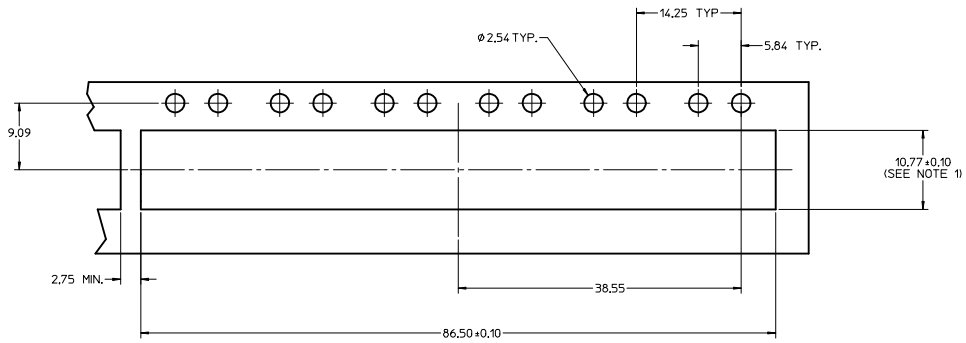
NOTES:

1. PADS AND VIAS CONNECT TO CHASSIS GROUND, (49 PLACES).
RECOMMENDED PADS TO BE 2mm SQUARE.
2. PLATING OPTIONAL FOR THROUGH HOLES (X PLACES)
3. RECOMMENDED PLATING INCLUDES HASL, IMMERSION (GOLD, SILVER, OR TIN), AND OSP.
4. HOLE PATTERN REPEATS FOR EACH PORT,
SPACING BETWEEN PORTS IS 14.25mm
5. CONNECTOR PAD LAYOUT PER SFP MSA. WILL ACCOMODATE MOLEX
CONNECTOR SERIES 74441 OR EQUIVALENT.
6. LEDS SHOULD BE PLACED RELATIVE TO THE SFP CONNECTOR POST HOLES.
7. DETAILS APPLY TO EACH PORT.

RECOMMENDED CENTRIX
OF LED

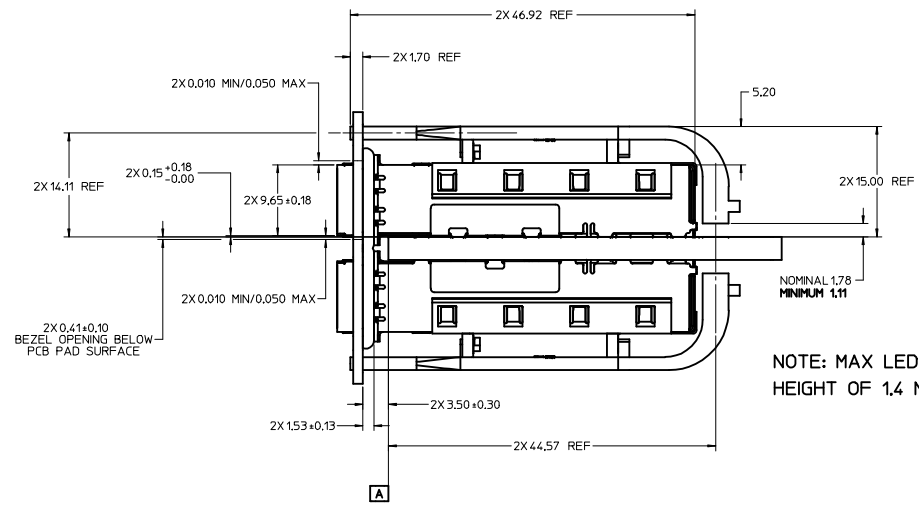
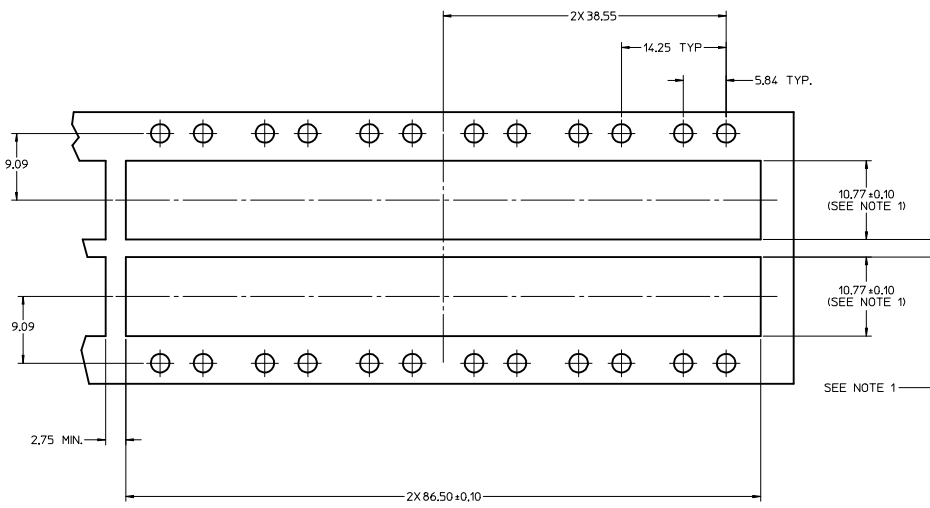
SEE REVISION TABLE IEC NO: CPG2016-0295 DRAWN BY: 2015/07/21 CHYKORCHEN08 2015/08/11 APPROVED BY: 2015/08/12	QUALITY SYMBOLS	GENERAL TOLERANCES (UNLESS SPECIFIED)	DIMENSION STYLE	SCALE	DESIGN UNITS	THIRD ANGLE PROJECTION
	▽=0	mm INCH	MM ONLY	6:1	METRIC	☉
	▽=0	4 PLACES ±---	4 PLACES ±---	DRAWN BY DATE	TITLE	
▽=0	3 PLACES ±---	3 PLACES ±---	CHECKED BY DATE	1X6 SFP LIGHT PIPE ASSEMBLY, BACK-TOP		
▽=0	2 PLACES ±0.13	2 PLACES ±0.13	APPROVED BY DATE	molex		
▽=0	1 PLACE ±0.25	1 PLACE ±0.25	MATERIAL NO.	747480001	DOCUMENT NO.	SD-74748-001
	0 PLACE ±	0 PLACE ±	SIZE	D	SHEET NO. 3 OF 5	
DRAFT WHERE APPLICABLE MUST REMAIN WITHIN DIMENSIONS			THIS DRAWING CONTAINS INFORMATION THAT IS PROPRIETARY TO MOLEX INCORPORATED AND SHOULD NOT BE USED WITHOUT WRITTEN PERMISSION			

BEZEL AND BOARD POSITION DIMENSIONS FOR SINGLE SIDE MOUNTING



NOTE: MAX LED HEIGHT OF 1.4 MM

BEZEL AND BOARD POSITION DIMENSIONS FOR BELLY TO BELLY MOUNTING



NOTE: MAX LED HEIGHT OF 1.4 MM

- NOTE:
1. PCB THICKNESS VARIATION MUST BE CONSIDERED WHEN DETERMINING BEZEL OPENING, SIZE LOCATION.
 2. DIMENSIONS RELATED TO THE BEZEL/CAGE, ON THE TOP SIDE OF THE PCB ARE TYPICAL ON THE BOTTOM SIDE OF THE PCB.

SEE REVISION TABLE IEC NO: CPG2016-0295 DRAWN BY: DRWENWANG07 CHECKED BY: CHYKORCHEN08 APPR: RCHEN08 DATE: 2015/07/21 DATE: 2015/08/11 DATE: 2015/08/12	QUALITY SYMBOLS	GENERAL TOLERANCES (UNLESS SPECIFIED)	DIMENSION STYLE	SCALE	DESIGN UNITS	THIRD ANGLE PROJECTION	
	▽=0	mm INCH	MM ONLY	4:1	METRIC	☉	
	▽=0	4 PLACES ± --- ± ---	DRAWN BY DATE	TITLE			
	▽=0	3 PLACES ± --- ± ---	CHECKED BY DATE	1X6 SFP LIGHT PIPE ASSEMBLY, BACK-TOP			
	1 PLACE ± 0.25 ± ---	APPROVED BY DATE	MATERIAL NO.			DOCUMENT NO.	SHEET NO.
	0 PLACE ± ±	ANGULAR ± --- °	747480001			SD-74748-001	4 OF 5
DRAFT WHERE APPLICABLE MUST REMAIN WITHIN DIMENSIONS		THIS DRAWING CONTAINS INFORMATION THAT IS PROPRIETARY TO MOLEX INCORPORATED AND SHOULD NOT BE USED WITHOUT WRITTEN PERMISSION					

DATE (YEAR/MONTH/DAY)	REVISION	DESCRIPTION
2004/07/08	A	INITIAL RELEASE.
2005/06/03	B	CORRECTED P/N FOR DIALIGHT LED.
2005/06/10	C	UPDATED VIEWS TO SHOW CLEARANCE HOLES ADDED TO THE COVER .
2008/10/23	D	REMOVED 'AREA OF LIGHT PIPE COVERAGE' FROM PCB LAYOUT. ADDED NOTCH TO THE BRIDGE BETWEEN LIGHT PIPES (VISUAL ONLY). ADDED RoHS NOTE.
2015/08/11	E	SHEET 1: @D6: CHANGED DIM 2.84 TYP TO 2.84 REF @E19: CHANGED DIM 4.31 TYP TO 4.3 TYP @G15: DELETED DIM 86.46 @G15: ADDED DIM 86.41 SHEET 4: @F2: CHANGED DIM 2X15.00 TO 2X15.00 REF @E2: CHANGED DIM 1.80 TO NOMINAL 1.78 MINIMUM 1.11 @C5: CHANGED DIM 2X44.57 TO 2X44.57 REF @H5: CHANGED DIM 2X46.92 TO 2X46.92 REF @G6: CHANGED DIM 2X1.70 TO 2X1.70 REF @F9: CHANGED DIM 2X14.11 TO 2X14.11 REF @K2: CHANGED DIM 15.00 TO 15.00 REF @J2: CHANGED DIM 1.80 TO NOMINAL 1.78 MINIMUM 1.11 @I5: CHANGED DIM 44.57 TO 44.57 REF @M5: CHANGED DIM 46.92 TO 46.92 REF @L6: CHANGED DIM 1.70 TO 1.70 REF @K9: CHANGED DIM 14.11 TO 14.11 REF CHANGED "DIM X2" TO "2X DIM" ALL POSITIONS IN THIS DRAWING

SEE REVISION TABLE EC NO: CPG2016-0295 DRAWN BY: CHYKORCHEN07 CHECKED BY: CHYKORCHEN08 APPROVED BY: CHYKORCHEN08 DATE: 2015/07/21 DATE: 2015/08/11 DATE: 2015/08/12	QUALITY SYMBOLS	GENERAL TOLERANCES (UNLESS SPECIFIED)	DIMENSION STYLE	SCALE	DESIGN UNITS	THIRD ANGLE PROJECTION
	▽=0	4 PLACES ±--- ±---	MM ONLY	1:1	METRIC	☉
	▽=0	3 PLACES ±--- ±---	INCH			
	▽=0	2 PLACES ±0.13 ±---				
		1 PLACE ±0.25 ±---				
		0 PLACE ± ±---				
		ANGULAR ±---°				
		DRAFT WHERE APPLICABLE MUST REMAIN WITHIN DIMENSIONS				
			MATERIAL NO.	DOCUMENT NO.		SHEET NO.
			747480001	SD-74748-001		5 OF 5
			THIS DRAWING CONTAINS INFORMATION THAT IS PROPRIETARY TO MOLEX INCORPORATED AND SHOULD NOT BE USED WITHOUT WRITTEN PERMISSION			