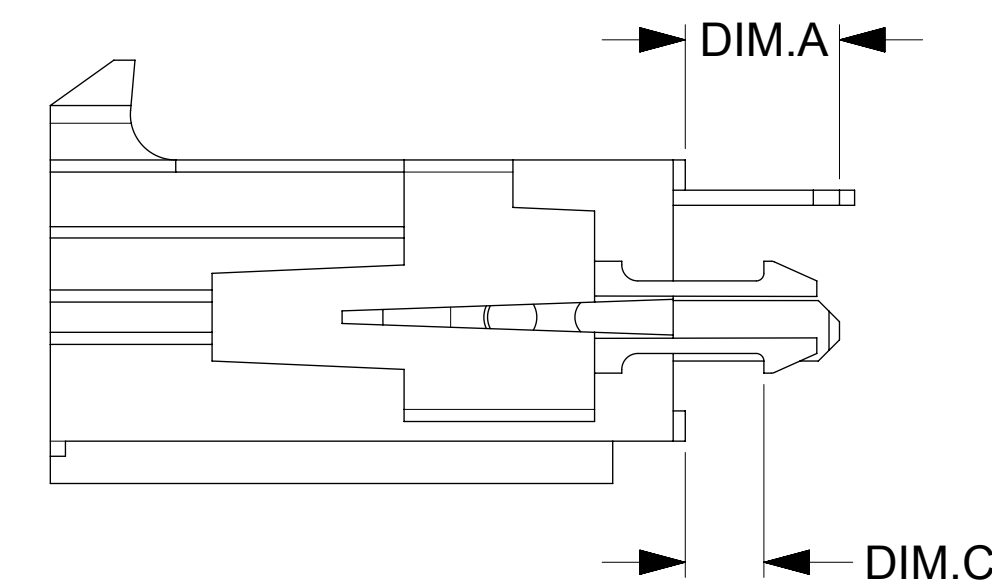


**NOTES:**

- 1) MATERIAL:  
HOUSING MATERIAL: GLASS FILLED NYLON 46, UL 94V-0, COLOR:- BLACK.  
TERMINAL MATERIAL: HIGH PERFORMANCE COPPER ALLOY.
- 2) FINISH:  
TIN INTERFACE : (.00254)/.000100 MIN. TIN OVER (.00127)/.000050 MIN. NICKEL OVERALL.  
GOLD INTERFACE: (.00075)/.000030 MIN. SELECT GOLD IN CONTACT AREA, (.00254)/.000100 MIN. SELECT TIN ON SOLDER TAILS OVER (.00127)/.000050 MIN. NICKEL.
- 3) PRODUCT SPECS: NONE.
- 4) PACKAGING INFORMATION: PK-42819-2375.
- 5) PART MATES WITH MOLEX RECEPTACLE #42816-\*\*\*2 WITH TPA.
- 6) WHEN USING OVERALL TIN PLATED TERMINALS FOR THOSE APPLICATIONS INVOLVING VIBRATION AND/OR THERMAL CYCLING, MOLEX STRONGLY RECOMMENDS THE USE OF NYE LUBRICANT (NYOGEL 760G) ON MATING SURFACES OF TERMINAL.
- 7) PARTS CONFORM TO CLASS 'B' REQUIREMENTS OF COSMETIC SPECIFICATION PS-45499-002. "



ITEM NUMBER	CKT. SIZE	STANDARD TERMINAL LOADED	QTY.	LOADED IN CIRCUIT POSITIONS	MFBL TERMINAL LOADED	QTY.	LOADED IN CIRCUIT POSITIONS	QUANTITY OF VOIDED CIRCUITS	DIM. A	DIM. B	DIM. C	INTERFACE PLATING
460170001	2	YES	1	2	YES	1	1	NONE	5.10	20.90	2.60	GOLD
460170002	3	YES	2	1 & 2	YES	1	3	NONE	3.50	30.90	1.80	TIN
460170003	3	YES	2	1 & 2	YES	1	3	NONE	3.50	40.90	1.80	GOLD
460170004	5	YES	4	1,3,4 & 5	NO	-	-	1	3.50	50.90	1.80	GOLD
460170005	6	YES	5	1,2,3,4 & 6	NO	-	-	1	3.50	60.90	1.80	GOLD
460170006	6	YES	6	1,2,3,4 & 5	YES	1	6	NONE	3.50	60.90	1.80	TIN

THIS DRAWING CONTAINS INFORMATION THAT IS PROPRIETARY TO MOLEX ELECTRONIC TECHNOLOGIES, LLC AND SHOULD NOT BE USED WITHOUT WRITTEN PERMISSION

DIMENSION UNITS <b>MM</b>	SCALE <b>4:1</b>	CURRENT REV DESC: MIGRATED TO ECTR	
GENERAL TOLERANCES (UNLESS SPECIFIED)		EC NO: 171562	
4 PLACES ±	±	DRWN: GGUNAGI	2017/10/12
3 PLACES ±	±	CHK'D: ISHWARG	2018/05/04
2 PLACES ±	±	APPR: ISHWARG	2018/05/04
1 PLACE ±	±	INITIAL REVISION:	
0 PLACES ±	±	DRWN: AELHAG	2010/05/14
ANGULAR TOL ± 0.5 °		APPR: FSMITH	2010/05/24
DRAFT WHERE APPLICABLE MUST REMAIN WITHIN DIMENSIONS		THIRD ANGLE PROJECTION	DRAWING SERIES
			<b>D-SIZE 46017</b>
DOCUMENT NUMBER		MATERIAL NUMBER	CUSTOMER
<b>SD-46017-001</b>		SEE CHART	GENERAL MARKET
DOC TYPE	DOC PART	REVISION	
PSD	001	<b>B1</b>	
SHEET NUMBER		1 OF 1	