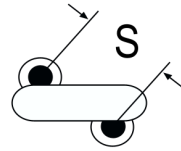


## ERP610W151KYEO

Aliases (C831YE151K760X, ERP610VH3150KYEO)

Obsolete

ERP610 SFTY X1-760 Y1-500, Ceramic, 150 pF, 10%, 760 VAC (X1), 500 VAC (Y1), Y5T, Lead Spacing = 10mm



The measurement position of Lead Spacing (S) and Width (V) is critical in straight lead capacitors.

Click [here](#) for the 3D model.

### Dimensions

D	8mm MAX
T	6mm MAX
S	10mm NOM
LL	2.8mm +1.5mm
F	0.6mm +/-0.05mm
A	6mm MAX
V	2.3mm +/-0.5mm

### Packaging Specifications

Packaging	Bulk, Bag
-----------	-----------

### General Information

Series	ERP610 SFTY X1-760 Y1-500
Style	Radial Disc
Description	Ceramic Single Layer Safety Disc Capacitors
RoHS	Yes
Termination	Tin
Qualifications	UL, CSA, CAN, ENEC, VDE
AEC-Q200	No

### Specifications

Capacitance	150 pF
Capacitance Tolerance	10%
Voltage AC	760 VAC (X1), 500 VAC (Y1)
Temperature Range	-40/+125°C
Temperature Coefficient	Y5T
Dissipation Factor	2.5%
Insulation Resistance	10 GOhms
Safety Class	X1/Y1