

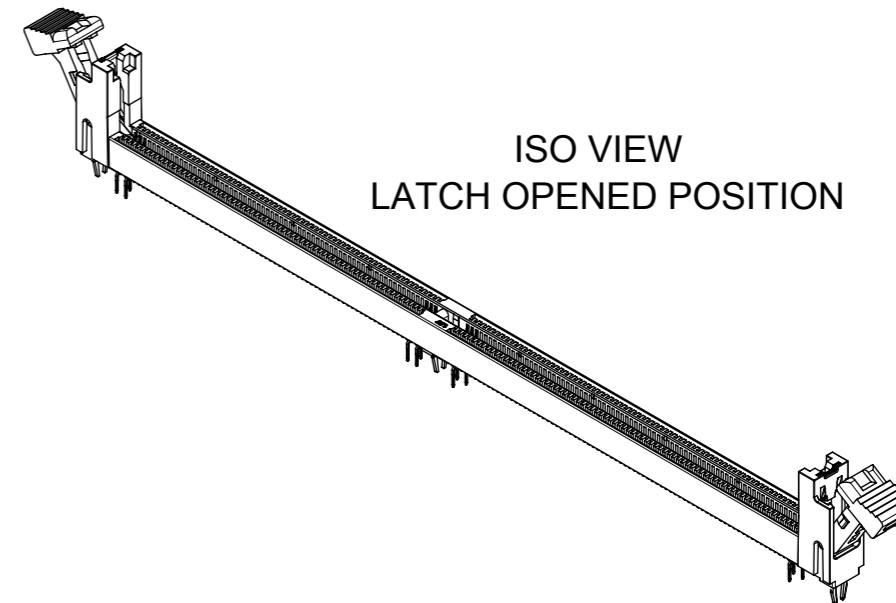
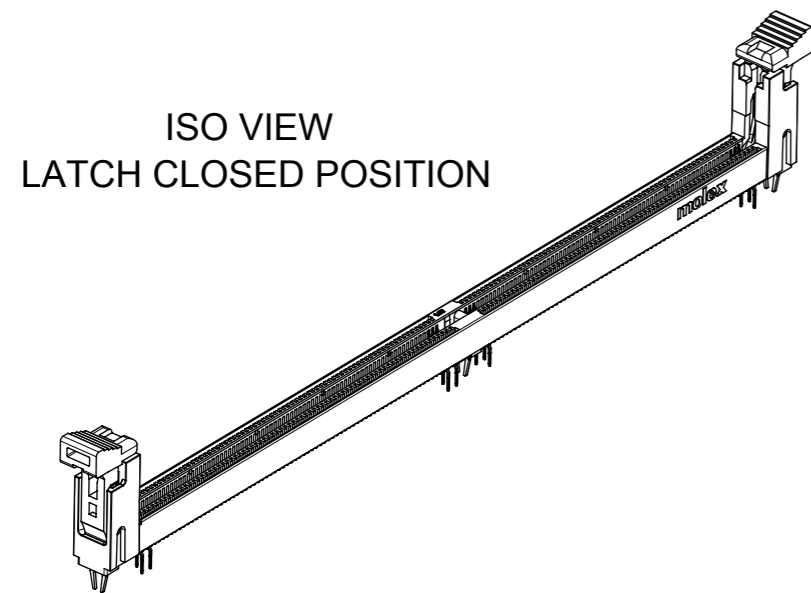
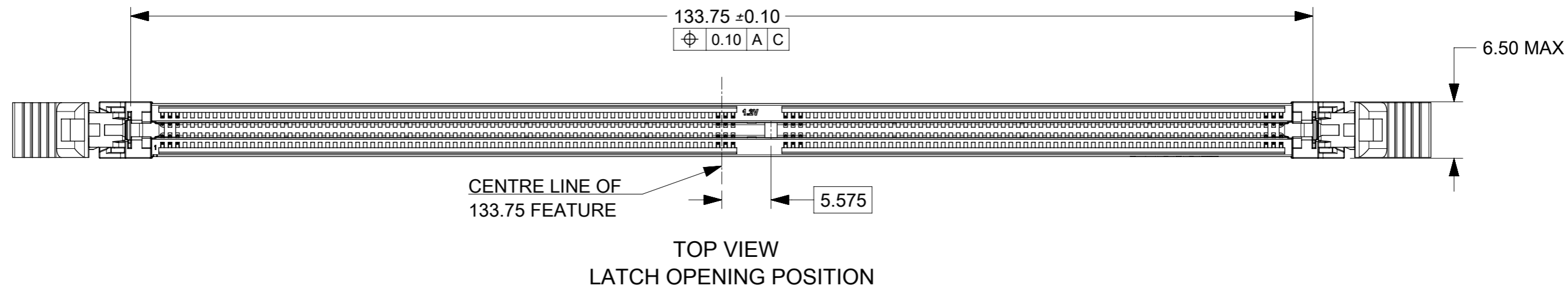
**NOTES:**

1. MATERIAL : HOUSING - HALOGEN FREE HIGH TEMP POLYAMIDE, GLASS FILLED, UL94V-0.  
COLOUR : SEE TABLE ON SHEET 5.  
LATCH - HALOGEN FREE HIGH TEMP POLYAMIDE, GLASS FILLED, UL94V-0.  
COLOUR : SEE TABLE ON SHEET 5.  
TERMINAL : COPPER ALLOY.  
FORKLOCK: COPPER ALLOY.
2. FINISHES - SEE TABLE ON SHEET 5.
3. PRODUCT SPECIFICATION : SEE TABLE ON SHEET 5.
4. PACKAGING SPECIFICATION: PRODUCT SHALL BE PACKED IN TRAY, SEE SHEET 5
5. CARD SLOT ACCEPTS 1.40±0.10MM MODULE THICKNESS (MEASURED OVER P.C. PADS).
6. MOLEX LOGO, DATE & PART NO. INDICATED ON HOUSING.
7. MODULE SEATING PLANE.
8. KEEP OUT ZONE RESERVED FOR LATCH.
9. KEEP OUT AREA IS THE AREA WHERE THE CONNECTOR (INCLUDES LATCHES IN OPENING POSITION) IS MOUNTED ON THE PCB.
- 10.REFER TO AS-78726-001 FOR CONNECTOR APPLICATION GUIDELINE.
- 11.REFER TO AS-78726-002 FOR PCB ROUTING RECOMMENDATIONS.

**DETAIL 5 : BUMPER ZONE**

THIS DRAWING CONTAINS INFORMATION THAT IS PROPRIETARY TO MOLEX ELECTRONIC TECHNOLOGIES, LLC AND SHOULD NOT BE USED WITHOUT WRITTEN PERMISSION											
UPDATE SD DRAWING	2018/03/28	2018/05/08	2018/05/15	GENERAL TOLERANCES (UNLESS SPECIFIED)		DIMENSION UNITS		SCALE			
	MM			INCH	MM	NTS					
	4 PLACES			±	±	DRWN BY	DATE	<b>DDR4 DIMM, 0.85MM PITCH 288CKTS, VERTICAL TH</b>			
	3 PLACES			±	±	EKSOH	2012/03/08				
	2 PLACES			±	0.2	±	CHK'D BY				
1 PLACES	±	±	CGTAN	2012/05/08							
0 PLACES	±	±	APPR BY	DATE	<b>PRODUCT CUSTOMER DRAWING</b>						
ANGULAR TOL = 3.0		SHLENI	2012/07/13	SERIES			MATERIAL NUMBER	CUSTOMER			
DRAFT WHERE APPLICABLE MUST REMAIN WITHIN DIMENSIONS		DRAWING SIZE		THIRD ANGLE PROJECTION			78726	SEE TABLE	GENERAL MARKET		
		A3					DOCUMENT NUMBER	DOC TYPE	DOC PART	SHEET NUMBER	
							SD-78726-002	PSD	000	1 OF 6	

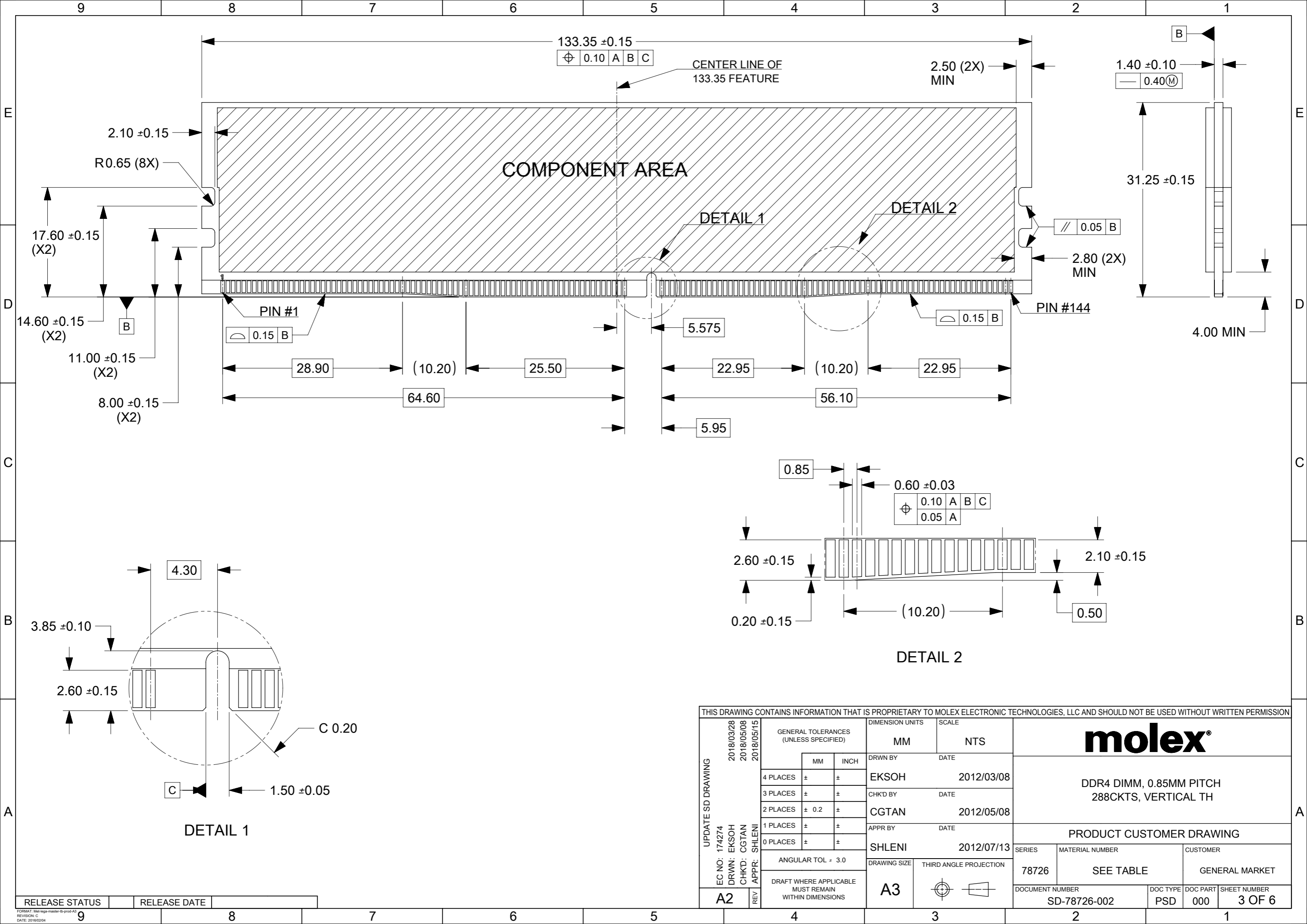
RELEASE STATUS	RELEASE DATE
----------------	--------------



THIS DRAWING CONTAINS INFORMATION THAT IS PROPRIETARY TO MOLEX ELECTRONIC TECHNOLOGIES, LLC AND SHOULD NOT BE USED WITHOUT WRITTEN PERMISSION

UPDATE SD DRAWING EC NO: 174274 DRWN: EKSOH CHK'D: CGTAN REV APPR: SHLENI	2018/03/28	GENERAL TOLERANCES (UNLESS SPECIFIED)		DIMENSION UNITS		SCALE					
	2018/05/08	MM	INCH	MM	NTS						
	2018/05/15	4 PLACES ±	±	DRWN BY	DATE	DDR4 DIMM, 0.85MM PITCH 288CKTS, VERTICAL TH					
		3 PLACES ±	±	EKSOH	2012/03/08						
		2 PLACES ± 0.2	±	CHK'D BY	DATE						
		1 PLACES ±	±	CGTAN	2012/05/08	PRODUCT CUSTOMER DRAWING					
	0 PLACES ±	±	APPR BY	DATE							
			SHLENI	2012/07/13	SERIES	MATERIAL NUMBER	CUSTOMER				
			ANGULAR TOL = 3.0	DRAWING SIZE	THIRD ANGLE PROJECTION	78726	SEE TABLE	GENERAL MARKET			
			DRAFT WHERE APPLICABLE MUST REMAIN WITHIN DIMENSIONS	A3		DOCUMENT NUMBER		DOC TYPE	DOC PART	SHEET NUMBER	
A2						SD-78726-002	PSD	000	2 OF 6		

RELEASE STATUS	RELEASE DATE
----------------	--------------



133.35 ± 0.15  
 ⊕ 0.10 A B C

CENTER LINE OF  
 133.35 FEATURE

2.50 (2X)  
 MIN

1.40 ± 0.10  
 — 0.40(M)

COMPONENT AREA

DETAIL 1

DETAIL 2

2.10 ± 0.15  
 R0.65 (8X)  
 17.60 ± 0.15 (X2)  
 14.60 ± 0.15 (X2)  
 11.00 ± 0.15 (X2)  
 8.00 ± 0.15 (X2)

31.25 ± 0.15

// 0.05 B

2.80 (2X)  
 MIN

4.00 MIN

PIN #1

PIN #144

0.15 B

5.575

0.15 B

28.90

(10.20)

25.50

22.95

(10.20)

22.95

64.60

56.10

5.95

0.85

0.60 ± 0.03  
 ⊕ 0.10 A B C  
 0.05 A

2.60 ± 0.15

2.10 ± 0.15

0.20 ± 0.15

(10.20)

0.50

DETAIL 2

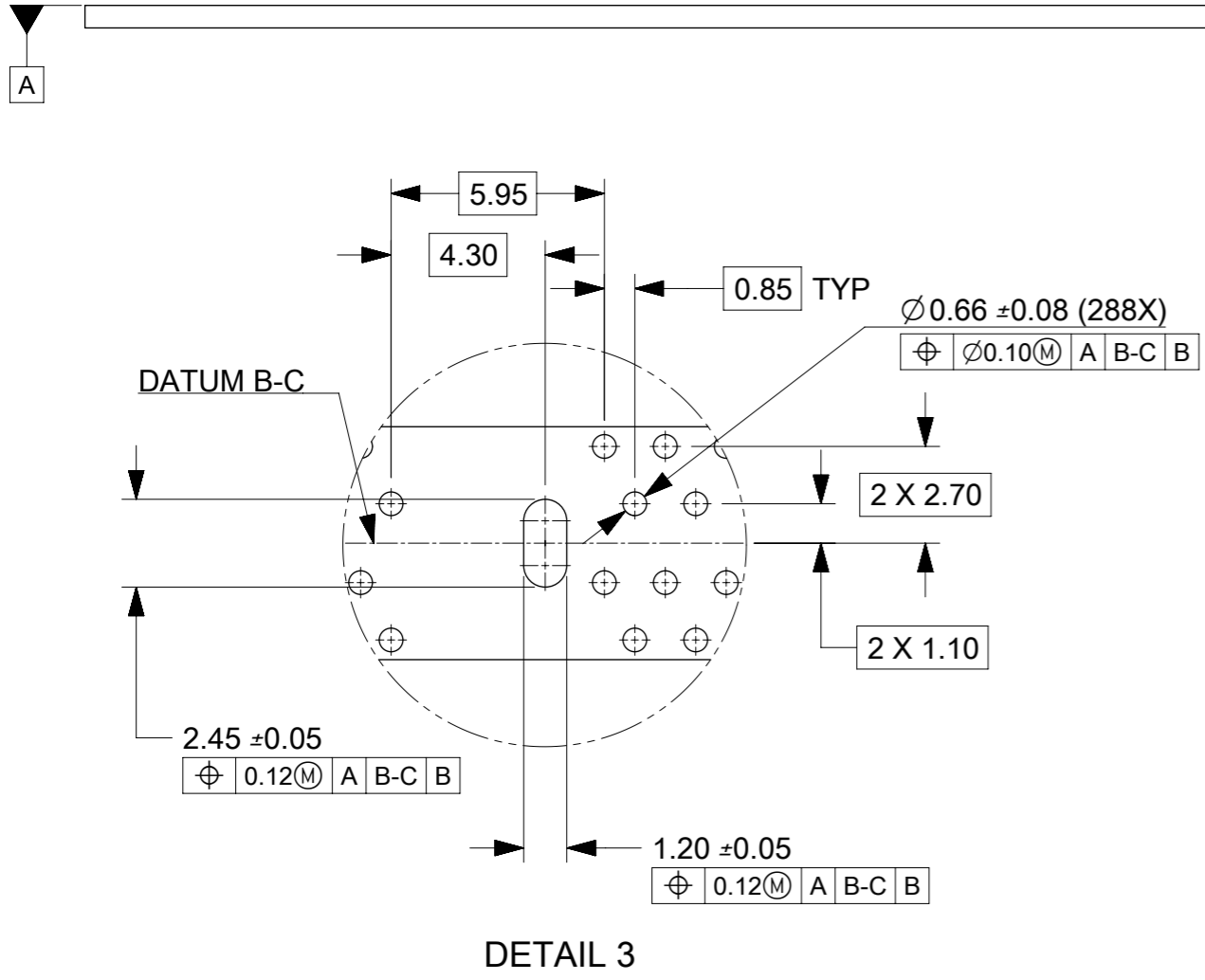
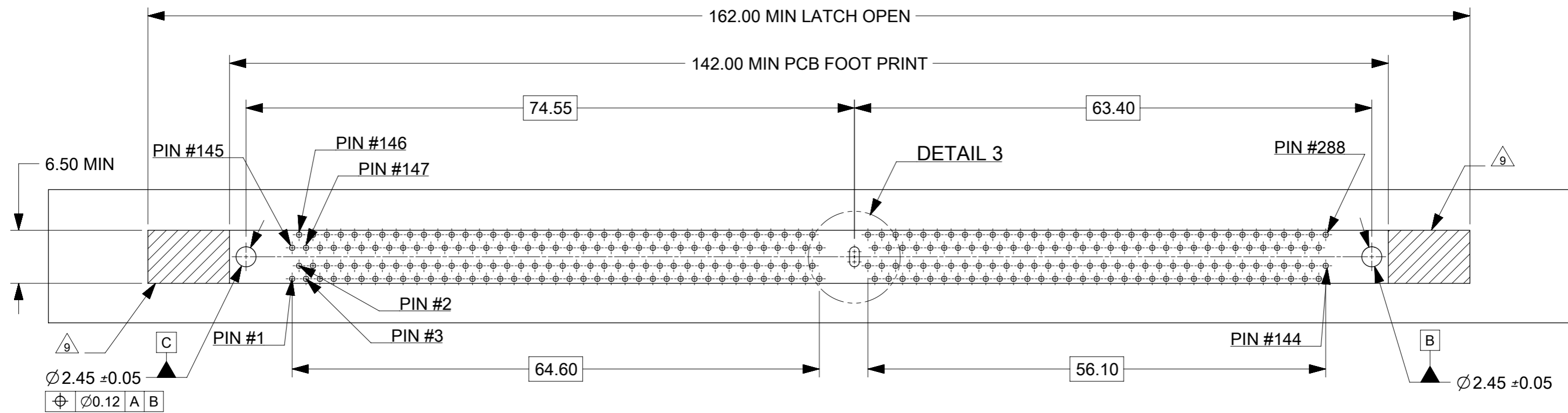
4.30  
 3.85 ± 0.10  
 2.60 ± 0.15  
 C 0.20  
 1.50 ± 0.05

DETAIL 1

THIS DRAWING CONTAINS INFORMATION THAT IS PROPRIETARY TO MOLEX ELECTRONIC TECHNOLOGIES, LLC AND SHOULD NOT BE USED WITHOUT WRITTEN PERMISSION

UPDATE SD DRAWING	2018/03/28	GENERAL TOLERANCES (UNLESS SPECIFIED)		DIMENSION UNITS		SCALE				
	2018/05/08	MM	INCH	MM	NTS	DDR4 DIMM, 0.85MM PITCH 288CKTS, VERTICAL TH				
	2018/05/15	4 PLACES	±	±	DRWN BY	DATE		PRODUCT CUSTOMER DRAWING		
	EC NO: 174274	3 PLACES	±	±	EKSOH	2012/03/08		SERIES		
	DRWN: EKSOH	2 PLACES	± 0.2	±	CHK'D BY	DATE		MATERIAL NUMBER		
CHK'D: CGTAN	1 PLACES	±	±	CGTAN	2012/05/08		CUSTOMER			
REV APPR: SHLENI	0 PLACES	±	±	APPR BY	DATE		GENERAL MARKET			
				SHLENI	2012/07/13		DOCUMENT NUMBER			
							78726			
							SEE TABLE			
							SD-78726-002			
							PSD			
							000			
							3 OF 6			

RELEASE STATUS      RELEASE DATE




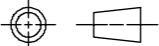
THIS DRAWING CONTAINS INFORMATION THAT IS PROPRIETARY TO MOLEX ELECTRONIC TECHNOLOGIES, LLC AND SHOULD NOT BE USED WITHOUT WRITTEN PERMISSION

UPDATE SD DRAWING EC NO: 174274 DRWN: EKSOH CHK'D: CGTAN REV APPR: SHLENI	2018/03/28	GENERAL TOLERANCES (UNLESS SPECIFIED)		DIMENSION UNITS		SCALE					
	2018/05/08	MM	INCH	MM	NTS	DRWN BY					DATE
	2018/05/15	4 PLACES	±	±	EKSOH		2012/03/08		DDR4 DIMM, 0.85MM PITCH 288CKTS, VERTICAL TH		
		3 PLACES	±	±	CHK'D BY		DATE				
		2 PLACES	± 0.2	±	CGTAN		2012/05/08		PRODUCT CUSTOMER DRAWING		
	1 PLACES	±	±	APPR BY		DATE					
	0 PLACES	±	±	SHLENI		2012/07/13		SERIES	MATERIAL NUMBER	CUSTOMER	
	ANGULAR TOL = 3.0		DRAWING SIZE		THIRD ANGLE PROJECTION		78726	SEE TABLE	GENERAL MARKET		
	DRAFT WHERE APPLICABLE MUST REMAIN WITHIN DIMENSIONS		A3				DOCUMENT NUMBER		DOC TYPE	DOC PART	SHEET NUMBER
A2							SD-78726-002		PSD	000	4 OF 6

RELEASE STATUS	RELEASE DATE
----------------	--------------

CKT SIZE	ASSEMBLY PART NO.	HOUSING COLOR	LATCH COLOR	DIM "P"	RECOMMENDED PCB THICKNESS	PLATING OPTION		PRODUCT SPEC. NO.	PACKAGING SPEC. NO.
						TERMINAL	FORKLOCK		
288	78726-1051	BLACK	BLACK	2.10	1.57	0.76 MICROMETER (30 MICROINCH) MIN GOLD ON CONTACT	1 MICROMETER (40 MICROINCH) MIN TIN OVERALL (PRE-PLATED)	PS-78726-001	PK-78726-001
	78726-1039			2.40	1.57				
	78726-1002			2.67	1.57				
	78726-1003			3.18	2.36				
	78726-1026			3.50	3.00				
	78726-1052	BLACK	WHITE	2.10	1.57				
	78726-1040			2.40	1.57				
	78726-1004			2.67	1.57				
	78726-1005			3.18	2.36				
	78726-1027			3.50	3.00				
	78726-1053	WHITE	BLACK	2.10	1.57				
	78726-1041			2.40	1.57				
	78726-1006			2.67	1.57				
	78726-1007			3.18	2.36				
	78726-1028			3.50	3.00				
	78726-1054	WHITE	WHITE	2.10	1.57				
	78726-1042			2.40	1.57				
	78726-1008			2.67	1.57				
	78726-1009			3.18	2.36				
	78726-1029			3.50	3.00				
	78726-1055	BLUE	BLUE	2.10	1.57				
	78726-1043			2.40	1.57				
	78726-1010			2.67	1.57				
	78726-1011			3.18	2.36				
	78726-1030			3.50	3.00				
	78726-1056	BLUE	WHITE	2.10	1.57				
	78726-1044			2.40	1.57				
	78726-1022			2.67	1.57				
	78726-1023			3.18	2.36				
	78726-1031			3.50	3.00				
78726-1063	YELLOW	WHITE	2.10	1.57					
78726-1064			2.40	1.57					
78726-1065			2.67	1.57					
78726-1066			3.18	2.36					
78726-1067			3.50	3.00					


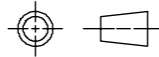
THIS DRAWING CONTAINS INFORMATION THAT IS PROPRIETARY TO MOLEX ELECTRONIC TECHNOLOGIES, LLC AND SHOULD NOT BE USED WITHOUT WRITTEN PERMISSION

UPDATE SD DRAWING EC NO: 174274 DRWN: EKSOH CHK'D: CGTAN REV APPR: SHLENI	2018/03/28	2018/05/08	2018/05/15	GENERAL TOLERANCES (UNLESS SPECIFIED)		DIMENSION UNITS	SCALE					
				MM	INCH	MM	NTS					
		4 PLACES	±	±	DRWN BY	DATE	EKSOH		2012/03/08			
		3 PLACES	±	±	CHK'D BY	DATE	CGTAN		2012/05/08			
		2 PLACES	± 0.2	±	APPR BY	DATE	SHLENI		2012/07/13			
		1 PLACES	±	±	ANGULAR TOL = 3.0		DRAWING SIZE	THIRD ANGLE PROJECTION	78726			
		0 PLACES	±	±	DRAFT WHERE APPLICABLE MUST REMAIN WITHIN DIMENSIONS		A3		SEE TABLE			
									GENERAL MARKET			
									PRODUCT CUSTOMER DRAWING			
									SERIES	MATERIAL NUMBER	CUSTOMER	
								78726	SEE TABLE	GENERAL MARKET		
								DOCUMENT NUMBER		DOC TYPE	DOC PART	SHEET NUMBER
								SD-78726-002		PSD	000	5 OF 6

RELEASE STATUS	RELEASE DATE
----------------	--------------

CKT SIZE	ASSEMBLY PART NO.	HOUSING COLOR	LATCH COLOR	DIM "P"	RECOMMENDED PCB THICKNESS	PLATING OPTION		PRODUCT SPEC. NO.	PACKAGING SPEC. NO.
						TERMINAL	FORKLOCK		
288	78726-1057	BLACK	BLACK	2.10	1.57	0.38 MICROMETER (15 MICROINCH) MIN GOLD ON CONTACT	1 MICROMETER (40 MICROINCH) MIN TIN OVERALL (PRE-PLATED)	PS-78726-002	PK-78726-001
	78726-1045			2.40	1.57				
	78726-1012			2.67	1.57				
	78726-1013			3.18	2.36				
	78726-1032			3.50	3.00				
	78726-1058			BLACK	WHITE				
	78726-1046	2.40	1.57						
	78726-1014	2.67	1.57						
	78726-1015	3.18	2.36						
	78726-1033	3.50	3.00						
	78726-1059	WHITE	BLACK						
	78726-1047			2.40	1.57				
	78726-1016			2.67	1.57				
	78726-1017			3.18	2.36				
	78726-1034			3.50	3.00				
	78726-1060			WHITE	WHITE				
	78726-1048	2.40	1.57						
	78726-1018	2.67	1.57						
	78726-1019	3.18	2.36						
	78726-1035	3.50	3.00						
	78726-1061	BLUE	BLUE						
	78726-1049			2.40	1.57				
	78726-1020			2.67	1.57				
	78726-1021			3.18	2.36				
	78726-1036			3.50	3.00				
	78726-1062			BLUE	WHITE				
	78726-1050	2.40	1.57						
	78726-1024	2.67	1.57						
	78726-1025	3.18	2.36						
	78726-1037	3.50	3.00						
78726-1068	YELLOW	WHITE	2.10			1.57			
78726-1069			2.40	1.57					
78726-1070			2.67	1.57					
78726-1071			3.18	2.36					
78726-1072			3.50	3.00					
								1.27 MICROMETER (50 MICROINCH) MIN NICKEL UNDERPLATE	

THIS DRAWING CONTAINS INFORMATION THAT IS PROPRIETARY TO MOLEX ELECTRONIC TECHNOLOGIES, LLC AND SHOULD NOT BE USED WITHOUT WRITTEN PERMISSION

UPDATE SD DRAWING EC NO: 174274 DRWN: EKSOH CHK'D: CGTAN REV APPR: SHLENI	2018/03/28	GENERAL TOLERANCES (UNLESS SPECIFIED)		DIMENSION UNITS		SCALE					
	2018/05/08	MM	INCH	MM	NTS						
	2018/05/15	4 PLACES ±	±	DRWN BY	DATE	DDR4 DIMM, 0.85MM PITCH 288CKTS, VERTICAL TH					
		3 PLACES ±	±	EKSOH	2012/03/08						
		2 PLACES ± 0.2	±	CHK'D BY	DATE	PRODUCT CUSTOMER DRAWING					
		1 PLACES ±	±	CGTAN	2012/05/08						
		0 PLACES ±	±	APPR BY	DATE	SERIES: 78726 MATERIAL NUMBER: SEE TABLE CUSTOMER: GENERAL MARKET					
				SHLENI	2012/07/13						
			ANGULAR TOL = 3.0	DRAWING SIZE	THIRD ANGLE PROJECTION	DOCUMENT NUMBER: SD-78726-002 DOC TYPE: PSD DOC PART: 000 SHEET NUMBER: 6 OF 6					
			DRAFT WHERE APPLICABLE MUST REMAIN WITHIN DIMENSIONS	A3							

RELEASE STATUS	RELEASE DATE
----------------	--------------