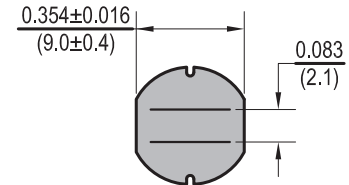
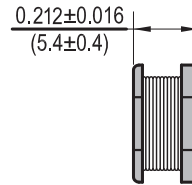
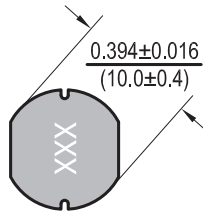


Dimensions: $\frac{\text{Inches}}{\text{(mm)}}$



Allied Part Number	Inductance (μh)	Tolerance (%)	Test Freq.	DCR Max. (Ω)	IDC Max. (A)
PC1005-3R3M-RC	3.3	20	2.52MHz,1V	.038	2.80
PC1005-4R7M-RC	4.7	20	2.52MHz,1V	0.04	2.60
PC1005-6R8M-RC	6.8	20	2.52MHz,1V	.037	4.33
PC1005-100M-RC	10	20	2.52MHz,1V	0.06	2.60
PC1005-120M-RC	12	20	2.52MHz,1V	0.07	2.45
PC1005-150M-RC	15	20	2.52MHz,1V	0.08	2.27
PC1005-180M-RC	18	20	2.52MHz,1V	0.09	2.15
PC1005-220M-RC	22	20	2.52MHz,1V	0.10	1.95
PC1005-270M-RC	27	20	2.52MHz,1V	0.11	1.76
PC1005-330K-RC	33	10	2.52MHz,1V	0.12	1.50
PC1005-390K-RC	39	10	2.52MHz,1V	0.14	1.37
PC1005-470K-RC	47	10	2.52MHz,1V	0.17	1.28
PC1005-560K-RC	56	10	2.52MHz,1V	0.19	1.17
PC1005-680K-RC	68	10	2.52MHz,1V	0.22	1.11
PC1005-820K-RC	82	10	2.52MHz,1V	0.25	1.10
PC1005-101K-RC	100	10	1KHz,1V	0.35	0.97
PC1005-121K-RC	120	10	1KHz,1V	0.40	0.89
PC1005-151K-RC	150	10	1KHz,1V	0.47	0.78
PC1005-181K-RC	180	10	1KHz,1V	0.63	0.72
PC1005-221K-RC	220	10	1KHz,1V	0.73	0.66
PC1005-271K-RC	270	10	1KHz,1V	0.97	0.57
PC1005-331K-RC	330	10	1KHz,1V	1.15	0.52
PC1005-391K-RC	390	10	1KHz,1V	1.30	0.48
PC1005-471K-RC	470	10	1KHz,1V	1.48	0.42
PC1005-561K-RC	560	10	1KHz,1V	1.90	0.33
PC1005-681K-RC	680	10	1KHz,1V	2.25	0.28
PC1005-821K-RC	820	10	1KHz,1V	2.55	0.24

All specifications subject to change without notice.

Features

- Unshielded SMD Power Inductor
- Suitable for pick and place assembly
- Suitable for large currents
- Ideal for DC-DC converter applications

Electrical

Inductance Range: 3.3μh to 820μh
Tolerance: Standard tolerance as shown. Most values available in tighter tolerances.
Test Frequency: As noted
Operating Temp: -40°C ~ +85°C
IDC: Current at which Inductance drops 10% of original value with a ΔT = 40 C whichever is lower.

Resistance to Soldering Heat

Pre-Heat 150°C, 1 Min.
Solder Composition: Sn/Ag3.0/Cu0.5
Solder Temp: 260°C +/- 5°C for 10 sec ± 1 sec.

Test Equipment

(L): HP4192A LF Impedance Analyzer
(RDC): Chen Hwa 502BC
(IDC): HP4284A with HP42841A or Chen Hwa 1061 + 301A

Physical

Packaging: 700 pieces per 13 inch reel.
Marking: EIA Inductance Code.