

# Customer Information Sheet

DRAWING No.: M50-361XX42R

IF IN DOUBT - ASK

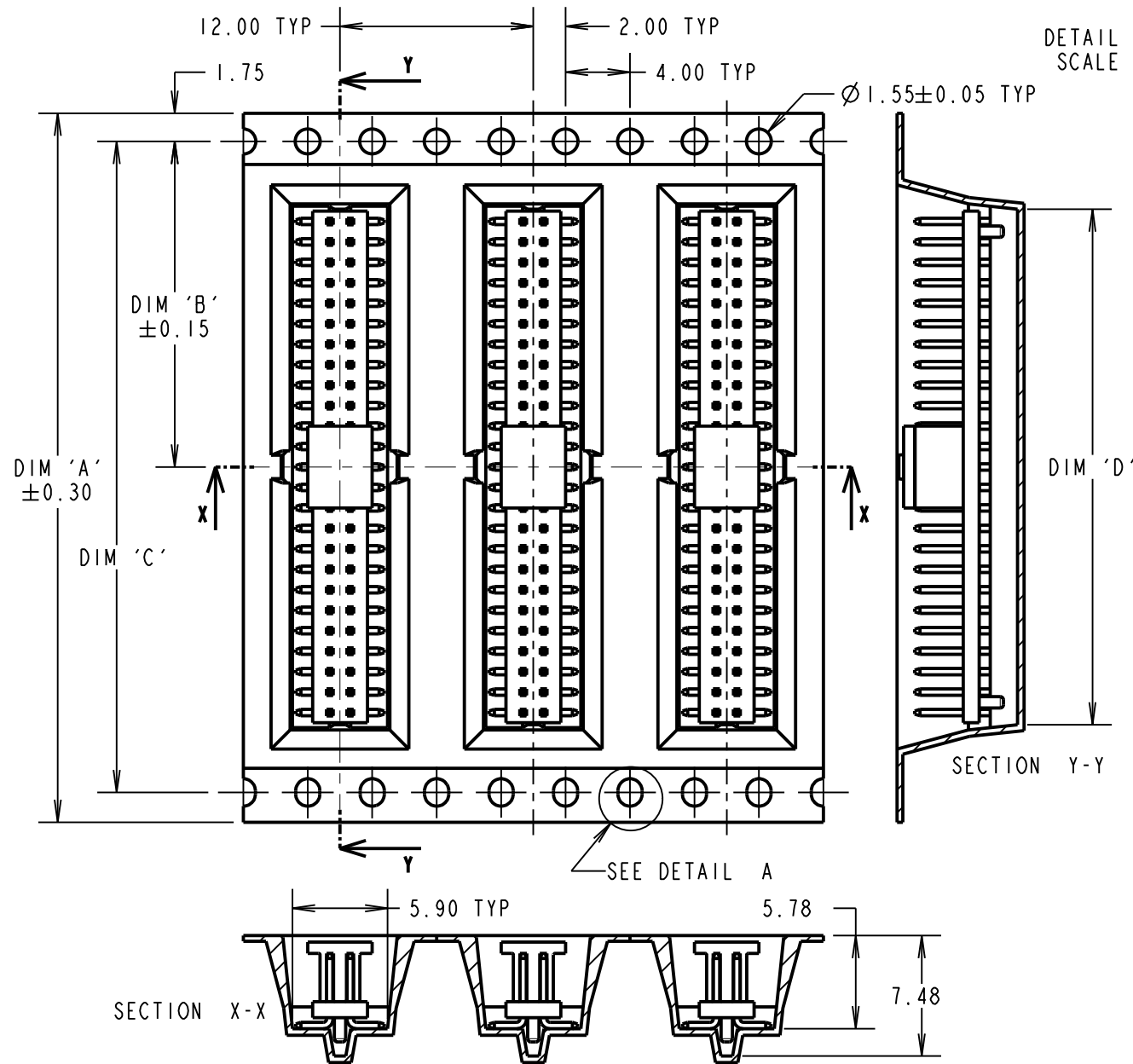
©

NOT TO SCALE

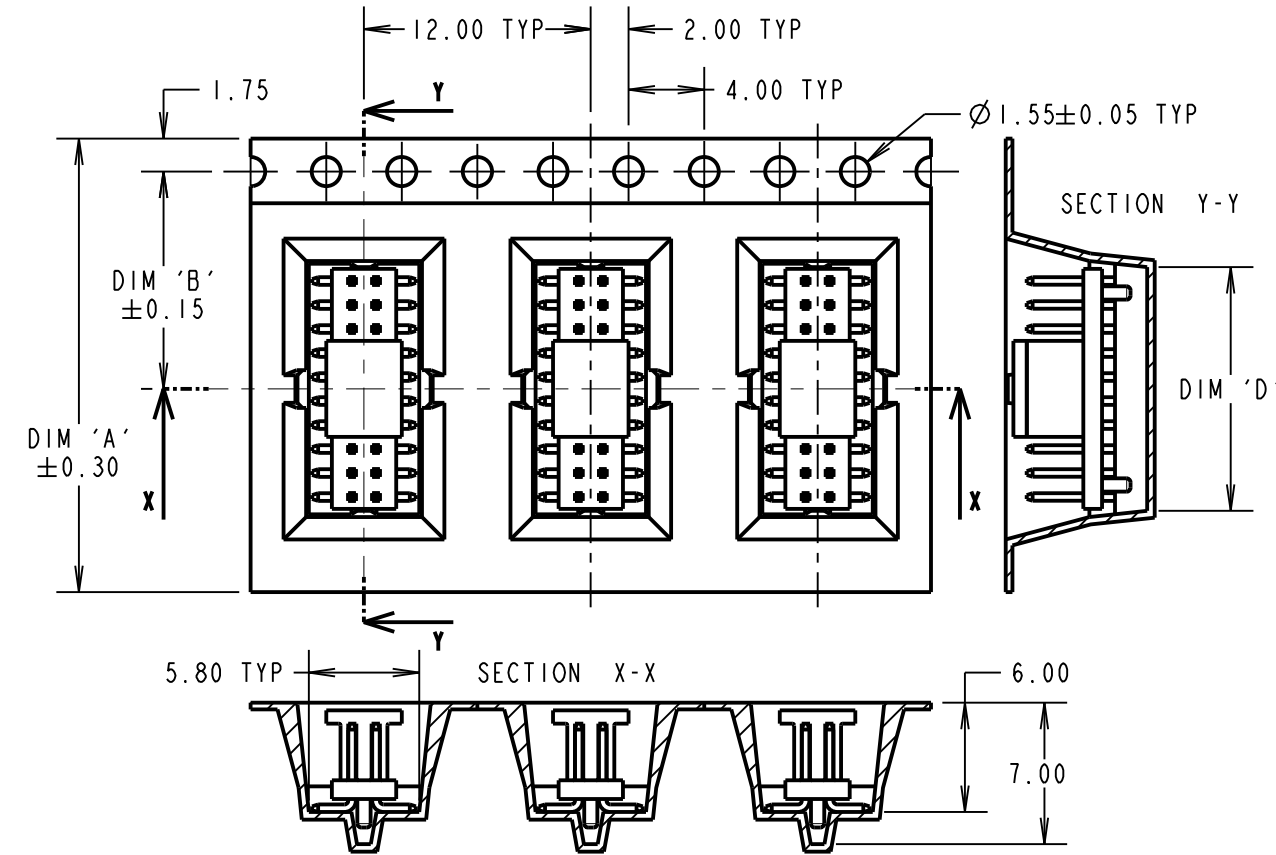
THIRD ANGLE PROJECTION

ALL DIMENSIONS IN mm

## TAPE DETAILS FOR 20 & 25 WAYS



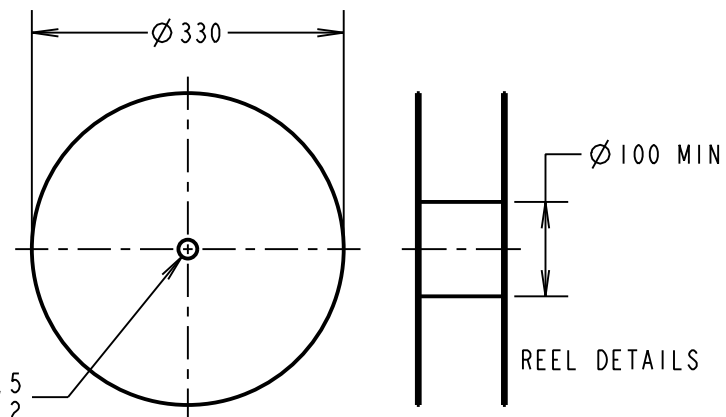
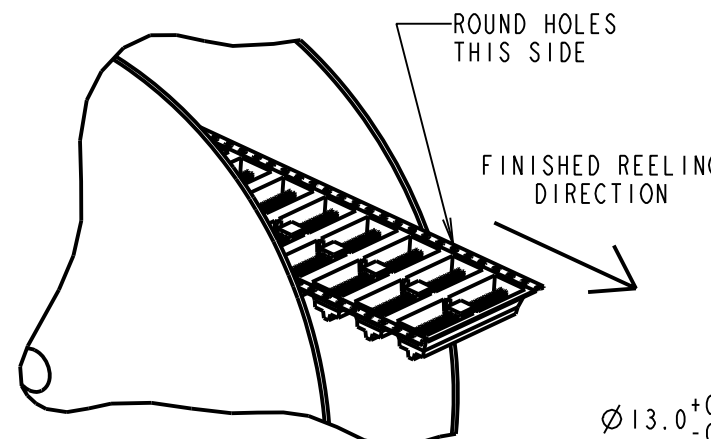
## TAPE DETAILS FOR 05, 06, 07, 08 & 10 WAYS



ORDER CODE:  
**M50-361XX42R**  
 No. OF CONTACTS PER ROW: \_\_\_\_\_  
 05, 06, 07, 08, 10, 20, 25  
 FINISH: \_\_\_\_\_  
 42 = SELECTIVE GOLD & 100% TIN OVER NICKEL

REELED PART No.	DIM 'A'	DIM 'B'	DIM 'C'	DIM 'D'	REEL QTY
M50-3610542R	16.00	7.50	N/A	6.67	700
M50-3610642R				7.94	
M50-3610742R				9.21	
M50-3610842R				10.48	
M50-3611042R				13.02	
M50-3612042R	44.00	20.20	40.40	25.72	
M50-3612542R	56.00	26.20	52.40	32.07	

- NOTES:
- CUMULATIVE TOLERANCES OVER 10 PITCHES = ±0.20mm
  - TAPE & REELING IS IN GENERAL ACCORDANCE WITH EIA-481 (ELECTRONIC INDUSTRIES ASSOCIATION).
  - FOR CONNECTOR DETAILS SEE SHEET 4.



MGP	3	19.10.20	30242
NAME	ISS.	DATE	CN/CO
APPROVED: MGP			
CHECKED: MR			
DRAWN: M. PERREN			
CUSTOMER REF.:			
ASSEMBLY DRG:			

<p>www.harwin.com technical@harwin.com</p>	<p>THIS DRAWING AND ANY INFORMATION OR DESCRIPTIVE MATTER SET OUT HEREON ARE CONFIDENTIAL AND COPYRIGHT PROPERTY OF THE HARWIN GROUP AND MUST NOT BE DISCLOSED, LOANED, COPIED OR USED FOR MANUFACTURING, TENDERING OR FOR ANY OTHER PURPOSE WITHOUT THEIR WRITTEN PERMISSION.</p>	<p>TOLERANCES</p> <p>X. = ±1mm                  X.X = ±0.50mm                  X.XX = ±0.20mm                  X.XXX = ±0.01mm</p> <p>ANGLES = ±5°                  UNLESS STATED</p>	<p>MATERIAL:</p> <p>SEE ABOVE</p> <p>FINISH: SEE ABOVE</p> <p>S/AREA: mm<sup>2</sup></p>	<p>TITLE:</p> <p>1.27mm PITCH DIL SMT VERT LOW PROFILE SOCKET ASSY WITH LOCATING PEGS (TAPE &amp; REEL)</p> <p>DRAWING NUMBER:</p> <p><b>M50-361XX42R</b></p>	<p>SHT 3 OF 4</p>
--	--	---	--	---	-------------------

# Customer Information Sheet

DRAWING No.: M50-361XX42R

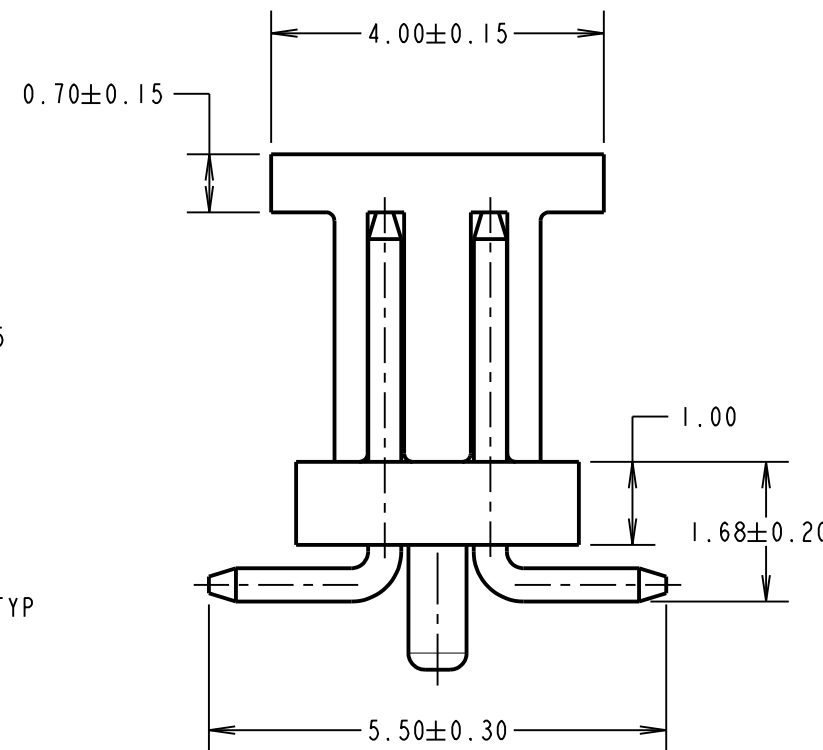
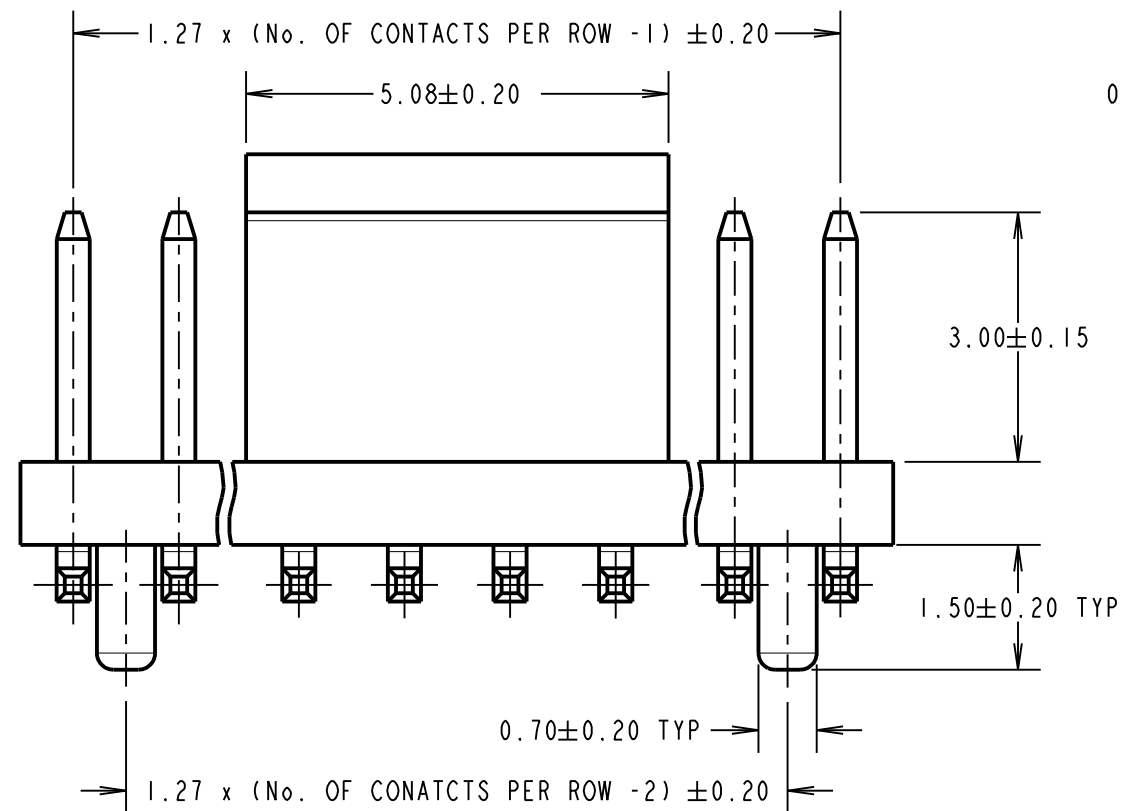
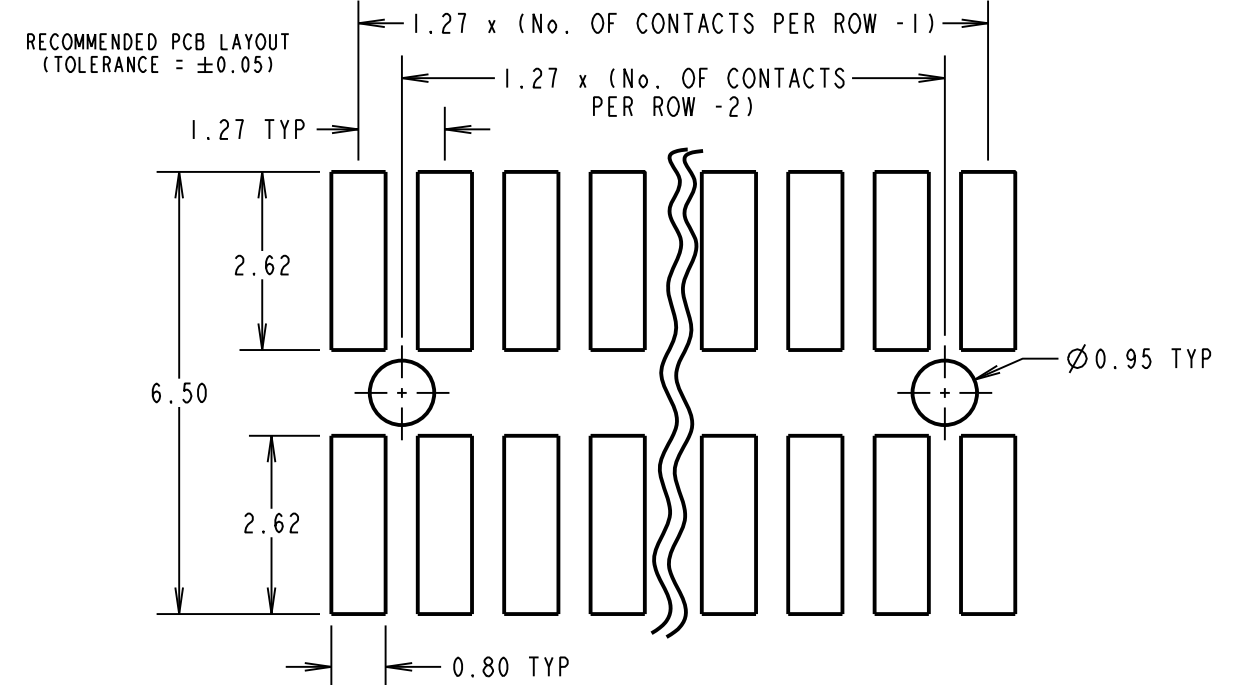
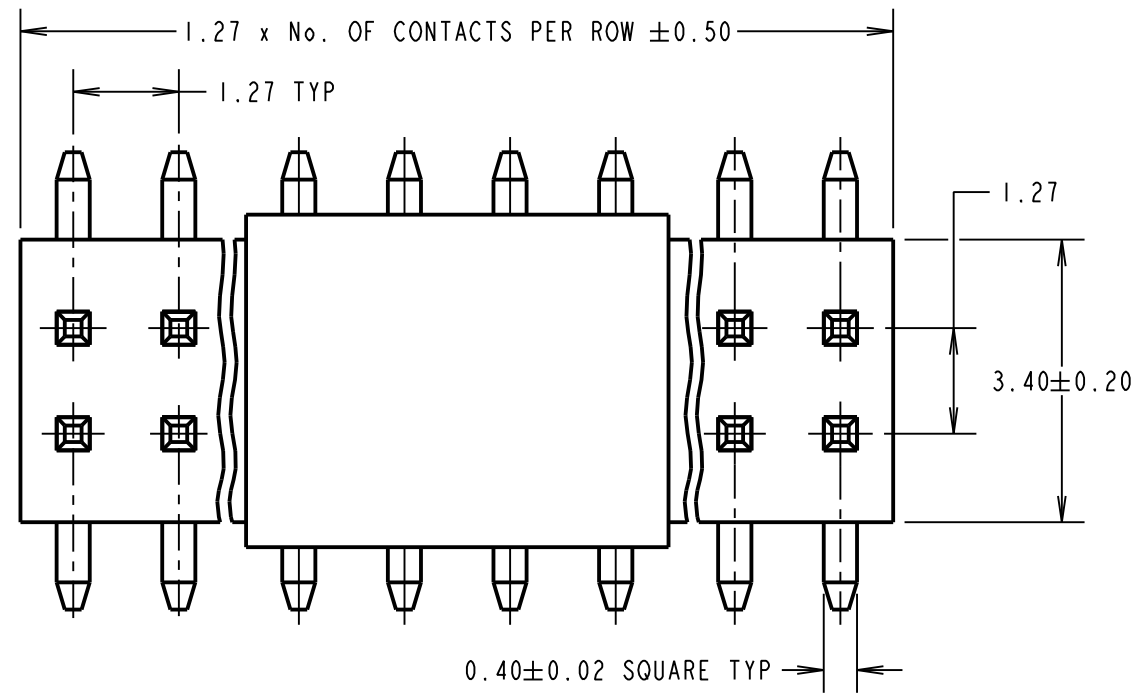
IF IN DOUBT - ASK

©

NOT TO SCALE

THIRD ANGLE PROJECTION

ALL DIMENSIONS IN mm



**SPECIFICATIONS:**

**MATERIAL:**

MOULDING = HIGH TEMP THERMOPLASTIC, UL94V-0, BLACK

CONTACTS = BRASS

**FINISH:**

CONTACTS = 0.76 TO 2.03  $\mu\text{m}$  NICKEL ALL OVER, 0.02 TO 0.08  $\mu\text{m}$  GOLD ON CONTACT AREA, 2.03 TO 5.08  $\mu\text{m}$  100% TIN ON TAILS

**ELECTRICAL:**

CURRENT RATING = 1A

CONTACT RESISTANCE = 20m $\Omega$  MAX

INSULATION RESISTANCE = 1000M $\Omega$  MIN

DIELECTRIC WITHSTANDING = 500V AC FOR ONE MINUTE

VOLTAGE RATING = 250V AC/DC

**MECHANICAL:**

DURABILITY = 300 CYCLES MIN

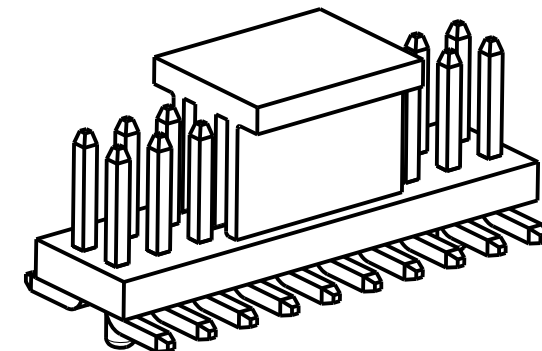
**ENVIRONMENTAL:**

TEMPERATURE RANGE = -55°C TO +105°C

**PACKING:**

BOX

FOR COMPLETE SPECIFICATION, SEE COMPONENT SPECIFICATION C029XX (LATEST ISSUE)



MGP	3	19.10.20	30242
NAME	ISS.	DATE	CN/CO
APPROVED: MGP			
CHECKED: MR			
DRAWN: M. PERREN			
CUSTOMER REF.:			
ASSEMBLY DRG:			

ORDER CODE:

**M50-361XX42R**

No. OF CONTACTS PER ROW: \_\_\_\_\_  
05, 06, 07, 08, 10, 20, 25

FINISH: \_\_\_\_\_  
42 = SELECTIVE GOLD & 100% TIN OVER NICKEL

**NOTES:**

- CO-PLANARITY OF TAILS = 0.15mm.
- FOR TAPE AND REEL DETAILS, SEE SHEET 3.

**HARWIN**

www.harwin.com  
technical@harwin.com

THIS DRAWING AND ANY INFORMATION OR DESCRIPTIVE MATTER SET OUT HEREON ARE CONFIDENTIAL AND COPYRIGHT PROPERTY OF THE HARWIN GROUP AND MUST NOT BE DISCLOSED, LOANED, COPIED OR USED FOR MANUFACTURING, TENDERING OR FOR ANY OTHER PURPOSE WITHOUT THEIR WRITTEN PERMISSION.

**TOLERANCES**

X. =  $\pm 1\text{mm}$   
X.X =  $\pm 0.50\text{mm}$   
X.XX =  $\pm 0.20\text{mm}$   
X.XXX =  $\pm 0.01\text{mm}$   
ANGLES =  $\pm 5^\circ$   
UNLESS STATED

**MATERIAL:**

SEE ABOVE

FINISH: SEE ABOVE

S/AREA:

mm<sup>2</sup>

TITLE: 1.27mm PITCH DIL SMT VERT LOW PROFILE SOCKET ASSY WITH LOCATING PEGS (TAPE & REEL)

DRAWING NUMBER:

**M50-361XX42R**

SHT  
4  
OF  
4