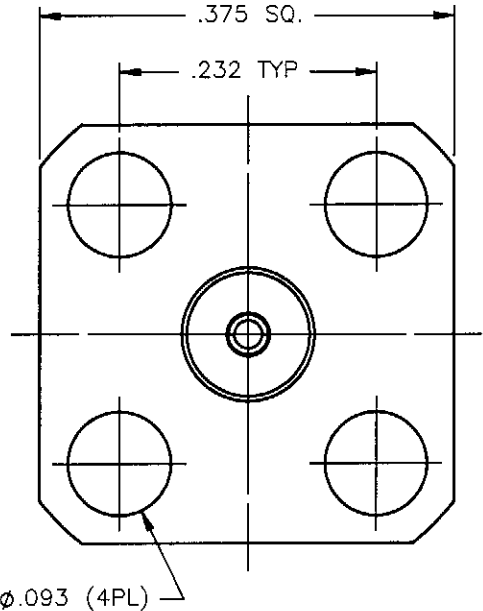
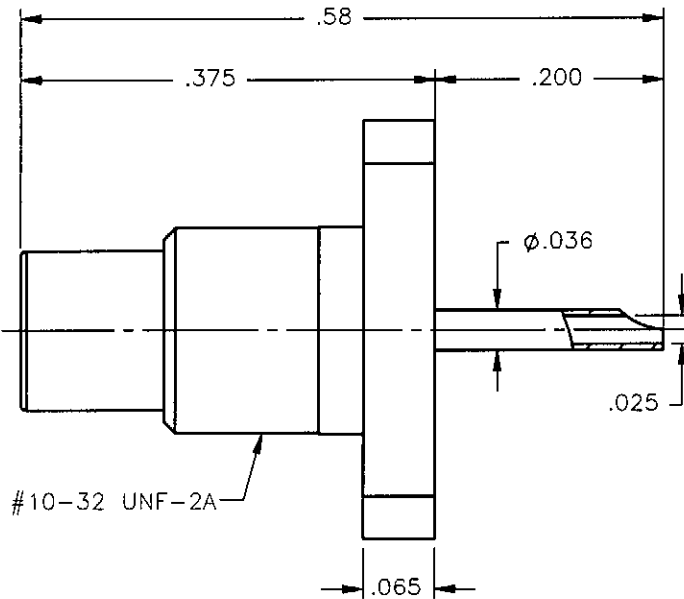


PROPRIETARY INFORMATION
 NOT TO BE RELEASED
 WITHOUT WRITTEN PERMISSION
 FROM AN AUTHORIZED
 REPRESENTATIVE OF
 APPLIED ENGINEERING PRODUCTS

REVISIONS			
REV.	DESCRIPTION	DATE	APPROVED
A	ECO #6970	01/11/08	K.P.





NOTES:

MATERIALS:

1. INSULATOR = VIRGIN WHITE TEFLON PER ASTM D1710, GRADE 1, TYPE I, CLASS "B".
2. ALL METAL PARTS = BRASS PER ASTM B16, ALLOY C36000, TEMPER H02.

FINISHES:

1. CONTACT = GOLD PLATE PER MIL-G-45204, TYPE II, CLASS 1, GRADE C, OVER .00010 TO .00020 STRESS FREE SULFAMATE NICKEL PER QQ-N-290.
2. ALL OTHER METAL PARTS = GOLD PLATE PER MIL-G-45204, TYPE II, CLASS 0, GRADE C, OVER .00010 TO .00020 COPPER STRIKE PER MIL-C-14550.

UNLESS OTHERWISE SPECIFIED DIMENSIONS ARE IN INCHES TOLERANCES ON	DWN:	DATE	 APPLIED ENGINEERING PRODUCTS 104 John W. Murphy Dr. New Haven, CT 06513 <i>a RADIALL company</i>
	K.P.	01/11/08	
DECIMAL	ANGLE	CHKD:	SMC STRAIGHT MALE JACK (4) HOLE FLANGE SOLDER POT RECEPTACLE
		G.L.	
REFERENCE:	MATERIALS & FINISHES:	APVD:	DATE
ORIGINATED: P.J.P. DATE: 06/13/83	SEE NOTES	J.M.	01/11/08
		SIZE	FSCM NO.
		A	19505
		DWG NO.	1484-1511-000
		SCALE	6:1
		THIRD ANGLE PROJECTION	
			SHEET 1 OF 1

1484-1511-000