

BILL OF MATERIALS

NO.	QUANTITY	SUPPLIER	DESCRIPTION	PART No.	SEE NOTE
1	1	MOLEX	16 CIRCUIT I/O MOBILE PHONE PLUG CONNECTOR	90813-0001	1, 2, 3
2	1	MOLEX	COAXIAL RF CONNECTOR	90853-0001	6
3	1	ROSENBERGER	COAXIAL RF CONNECTOR	26K101-02	6
4	1	NO PREFERRED SUPPLIERS	COAXIAL CABLE 50 OHM	RG 174 A/U	6
5	1 11 5	JST	16 CIRCUIT CONNECTOR CRIMP TERMINAL, 30 AWG CRIMP TERMINAL, 22 AWG	PHDR-16VS SPHD-0031-PO.5 SPHD-0017-PO.5	3, 6
6	1	MOLEX	16 CORE CABLE SEE CABLE SPECIFICATION		4, 5

CABLE SPECIFICATION : 16 CORE CABLE

1. CABLE TYPE: FLAT RIBBON ROUND OTHER
 SPIRAL CABLE YES NO
 NO. OF CONDUCTORS 16

2. CABLE REQUIREMENTS: N/A

3. CONDUCTOR SPECIFICATIONS:

CONDUCTOR NO.	CONDUCTOR NO.		COLOURS:
	1 - 4	5 - 16	
CONDUCTOR 1	CENTRE	OUTSIDE	1. WHITE
MATERIAL	TINNED CU	TINNED CU	2. GREEN
2. A.S.G.	25	30	3. BLUE
3. STRANDING	7/34	7/38	4. RED
4. TENSILE STRENGTH	N/A	N/A	5. PURP
INSULATION:			6. RED
MATERIAL	PVC	SEMI-RIGID PVC	7. BLACK
MEN. WALL THICKNESS	0.18 REF	0.18 REF	8. RED/BLACK
CON. DIA.	SEE CABLE DIAGRAM	SEE CABLE DIAGRAM	9. WHITE/GREEN
10. OUTSIDE DIAMETER	L25 REF	0.10 REF	10. WHITE/YELLOW
DIRECTION OF LAY	2	5	11. YELLOW/BROWN
LENGTH OF LAY	32 REF	45 REF	
12. Braid	16	492	

4. FILLER: ENOUGH TO MAKE THE ASSEMBLY ROUND

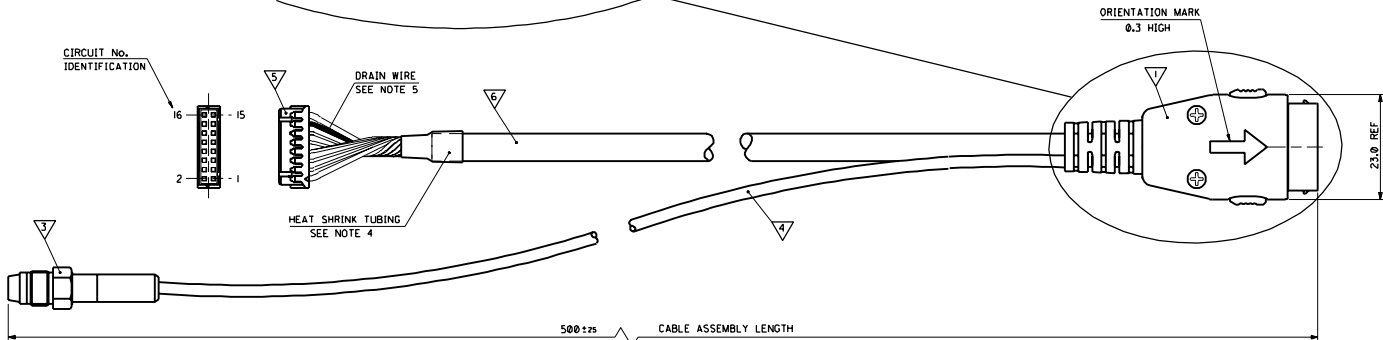
5. SEPARATOR: N/A

6. SHIELD: N/A
 FOIL TYPE: N/A
 FOIL FACING: N/A

7. DRAIN WIRE: GAUGE: 28 AWG
 STRANDING: 7/38
 REQUIREMENT: DRAIN TO BE ON THE OUTSIDE OF THE SEPARATOR

8. SPIRAL BRAID: GAUGE: 24 x 8 x 8.1
 COPPER TYPE: TINNED CU
 CONDUCTS: 10 x 3

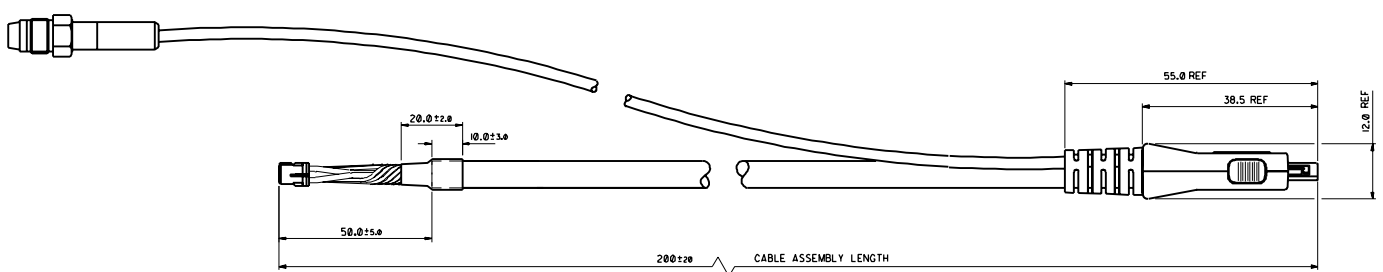
9. CABLE JACKET: TYPE: PVC (GENERAL PURPOSE EXTRUSION GRADE)
 FINAL DIAMETER: 0.6 REF
 MIN. THICKNESS: 0.2 REF
 COLOUR: BLACK
 FINISH: MATT
 ULL RATING: UL - 2827E
 HARDNESS: 61D5 SHORE B
 STRETCHABILITY: TO BE LASSIT SLIPPED BETWEEN THUMB AND FOREFINGER
 MARKINGS: *YEAR AND MONTH OF MANUFACTURE ACCORDING TO IEC 62 INDEX 5.1.1. *PART PRINTED IN WHITE EVERY 500.



WIRING DIAGRAM : 16 CORE CABLE

JST 16 CIRCUIT PHD CONNECTOR	16 CORE CABLE	MOLEX I/O CONNECTOR
CIRCUIT No.	CONDUCTOR No.	CIRCUIT No.
2	1	1
1	2	2
6	3	3
4	16	4
12	6	5
10	15	6
8	7	7
14	14	8
3	8	9
5	13	10
7	9	11
9	12	12
13	10	13
11	11	14
15	4	15
16	5	16

WIRING DIAGRAM : R.F. CABLE



SEE NOTE 8

BNo. 45816.019
 XX MXI
 MOLEX 90813-1017

REVISE ONLY ON CAD SYSTEM

DATE: MC
 BY: MC
 CHECKED: MC
 APPROVED: MC

DESIGN: MC
 DRAWING: MC
 CHECKED: MC
 APPROVED: MC

DATE: 19/03/13
 SHEET NO: 10F
 DATE: 26/03/13

MOLEX EUROPE

PART NO: 90813-1017
 SDA-90813-1017