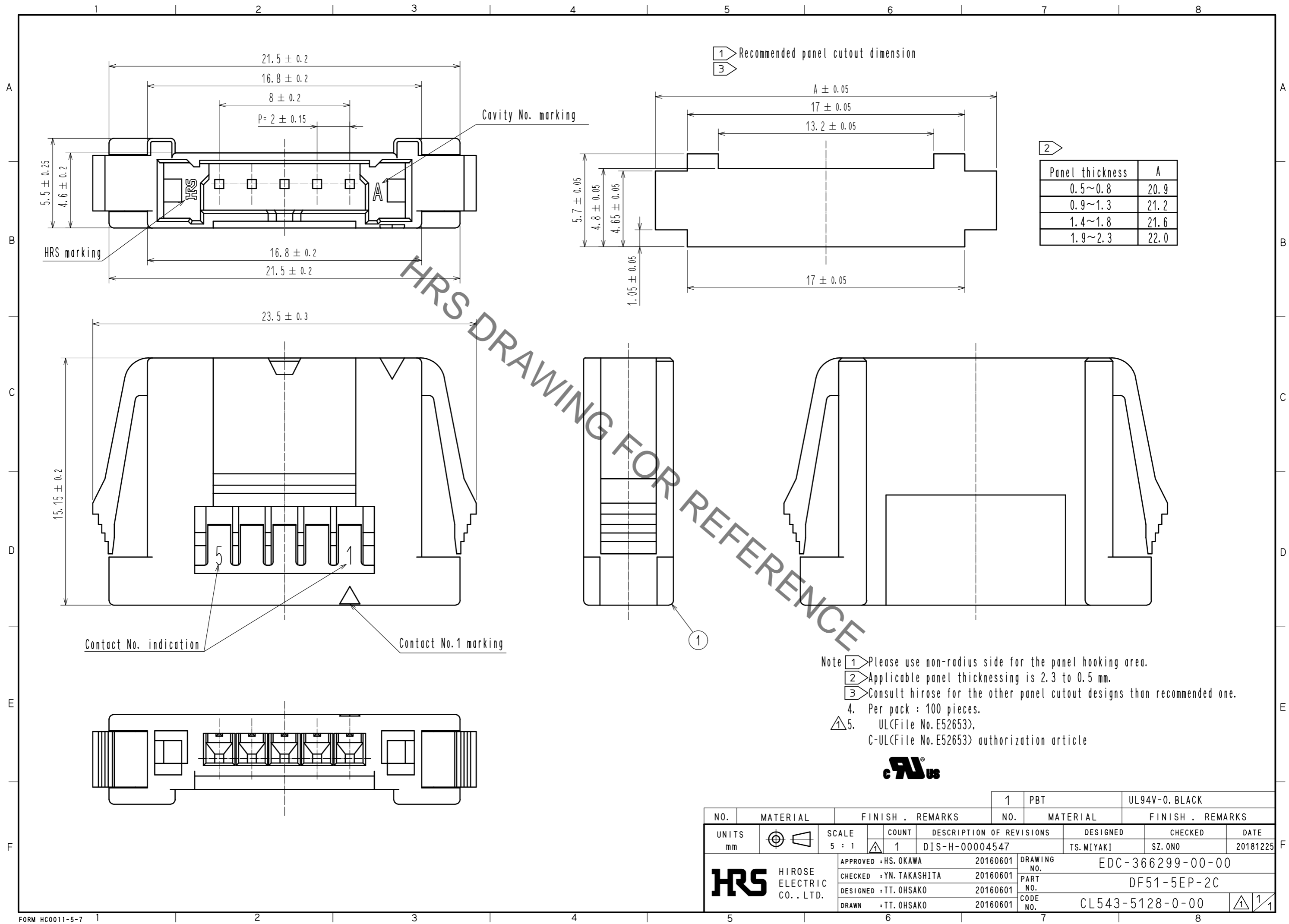


Aug.1.2019 Copyright 2019 HIROSE ELECTRIC CO., LTD. All Rights Reserved.
In case of consideration for using Automotive equipment / device which demand high reliability, kindly contact our sales window correspondents.



Panel thickness	A
0.5~0.8	20.9
0.9~1.3	21.2
1.4~1.8	21.6
1.9~2.3	22.0

- Note
- 1 Please use non-radius side for the panel hooking area.
 - 2 Applicable panel thicknessing is 2.3 to 0.5 mm.
 - 3 Consult Hirose for the other panel cutout designs than recommended one.
 - 4. Per pack : 100 pieces.
 - 5. UL(File No.E52653).
C-UL(File No.E52653) authorization article



NO.	MATERIAL	FINISH . REMARKS	NO.	MATERIAL	FINISH . REMARKS		
1	PBT			UL94V-0. BLACK			
UNITS	mm	SCALE	COUNT	DESCRIPTION OF REVISIONS	DESIGNED	CHECKED	DATE
		5 : 1	1	DIS-H-00004547	TS.MIYAKI	SZ.ONO	20181225
APPROVED : HS. OKAWA		20160601	DRAWING NO. EDC-366299-00-00				
CHECKED : YN. TAKASHITA		20160601	PART NO. DF51-5EP-2C				
DESIGNED : TT. OHSAKO		20160601	CODE NO. CL543-5128-0-00				
DRAWN : TT. OHSAKO		20160601					