

**ODCM Series**

**Slim Line  
DC Output Modules**

File E29244

Users should thoroughly review the technical data before selecting a product part number. It is recommended that users also seek out the pertinent approvals files of the agencies/laboratories and review them to ensure the product meets the requirements for a given application.

**Features**

- Slim line .4" (10.16mm) thick package.
- Foot print same as .6" (15.24mm) thick package.
- 4000V rms optical isolation.
- Color coded by function.
- High immunity to false operation.
- Series compatible.
- Output modules can be controlled from sinking or sourcing logic.
- Compatible with 2IOM series mounting boards.

**Engineering Data (all I/O modules)**

- Switch Form:** 1 Form A (SPST-NO)
- Duty:** Continuous.
- Operating Temperature:** -30°C to +80°C.
- Storage Temperature:** -30°C to +100°C.
- Potting Compound Flammability:** UL94V-0.
- Solderability:** 260°C for 5 seconds, maximum.
- Approximate Weight:** .87 oz. (22.1g).

**Ordering Information**

Typical Part Number >

**ODCM -5 A**

**1. Basic Series: ODCM** = Slim line DC output module — red case

**2. Logic Voltage:** 5 = 5VDC  
15 = 15VDC  
24 = 24VDC  
U = 3-15VDC

**3. Output:** Blank = 3A, 3-60VDC output

**Our authorized distributors are more likely to maintain the following items in stock for immediate delivery.**

ODCM-5

**Input Specifications**

Parameter	Conditions	Units	ODCM-5			ODCM-15			ODCM-24			ODCM-U		
			Min.	Typ.	Max.	Min.	Typ.	Max.	Min.	Typ.	Max.	Min.	Typ.	Max.
Control Voltage Range $V_{IN}$		VDC	3	5	8	9	15	18	18	24	32	3	5	15
Must Operate Voltage $V_{IN(OP)}$		VDC			3			9			18			3
Must release Voltage $V_{IN(REL)}$		VDC	1			1			1			1		
Maximum Input Current	@ $V_{IN}$ =Nominal	mADC	8 - 20			13 - 20			8 - 20			8 - 25		
Input Resistance $R_{IN}$		Ohms	Current Regulator											

PIN-3 must be positive with respect to PIN-4 for correct operation.

**ODCM Series** (Continued)

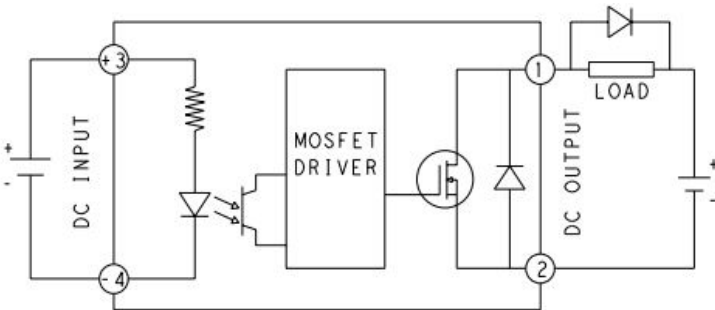
**DC Output Modules**

**Output Specifications (@ +25°C unless otherwise specified)**

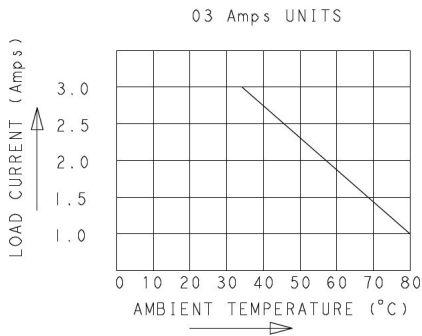
Parameter	Conditions	Units	ODCM-5	ODCM-15	
			ODCM-24	ODCM-U	
			Min.	Typ.	Max.
Load Voltage $V_L$		V dc	3		60
Load Current		A rms	0.1		3
Maximum Surge Current for 1 Second		A peak			33
Maximum Leakage Current (Off-State)	$V_L=280VAC$	$\mu A$ rms			500
Maximum On-State Voltage Drop	$I_L=Max.$	V rms			1.5
Maximum Turn-On Time		V/ $\mu s$			0.1
Maximum Turn-Off Time	@f=60/50 Hz.	ms			0.75

PIN-1 must be positive with respect to PIN-2 for correct operation.

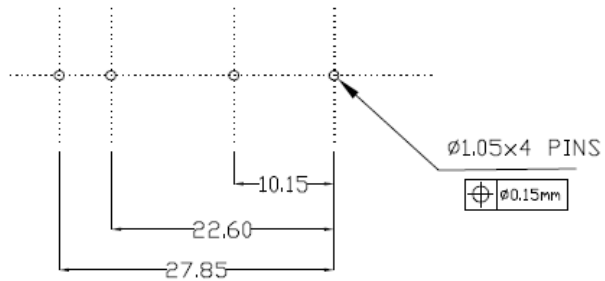
**ODCM Operating Diagram**



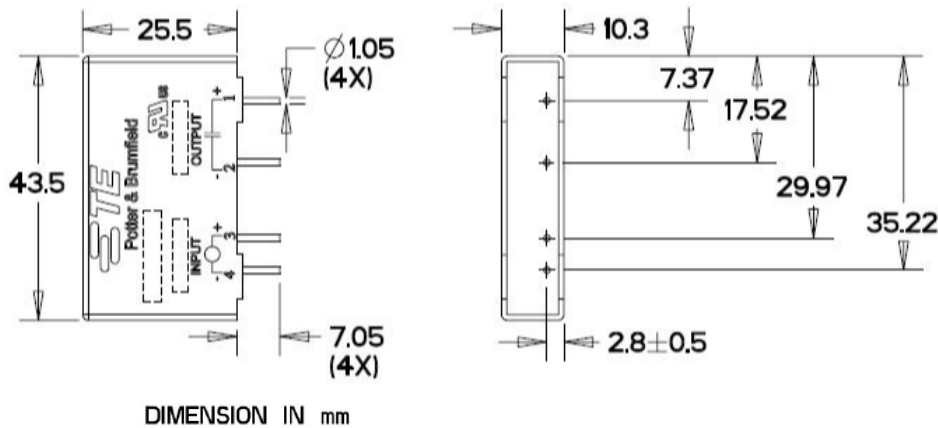
**ODCM Derating Diagram**



**PCB Layout**



**Outline Dimensions**



DIMENSION IN mm