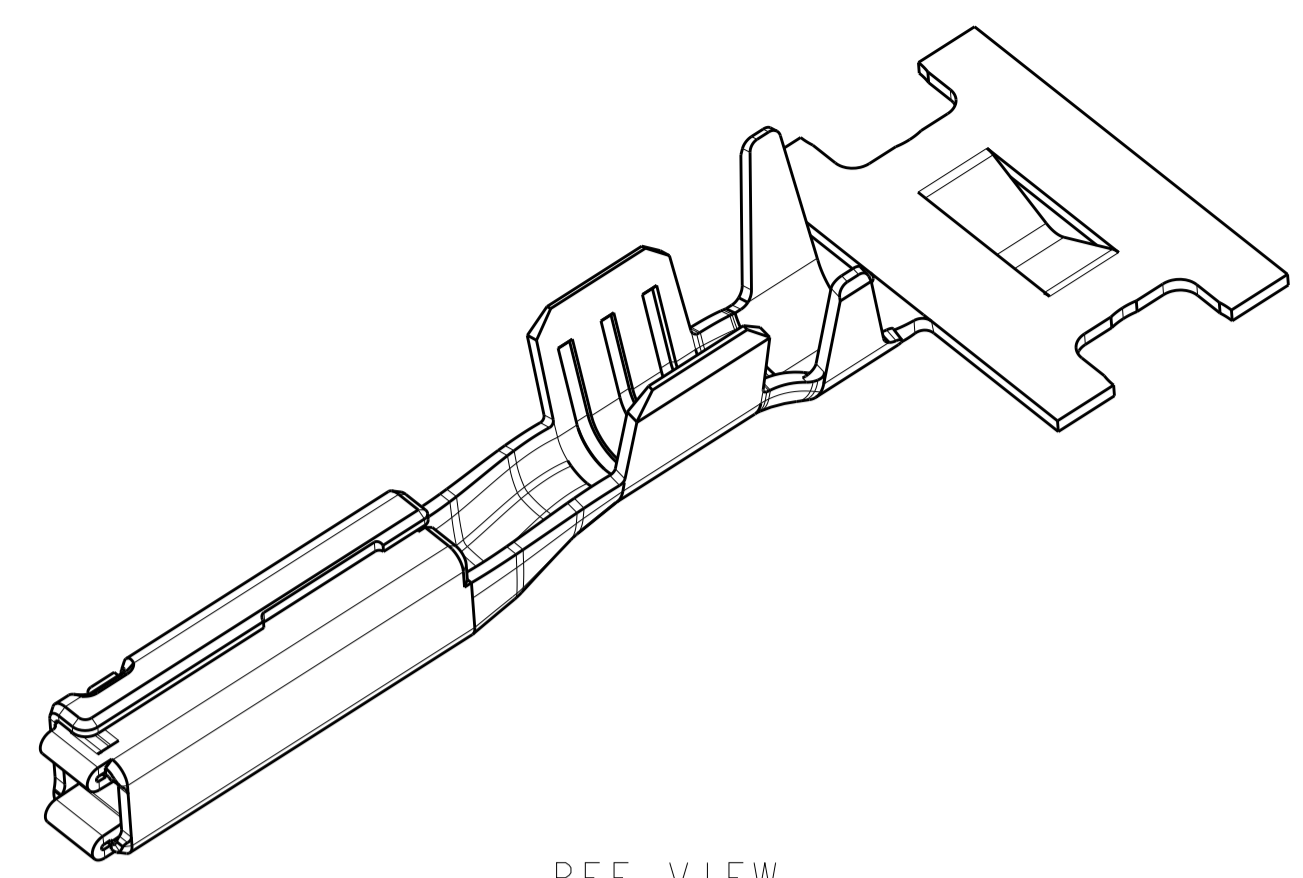
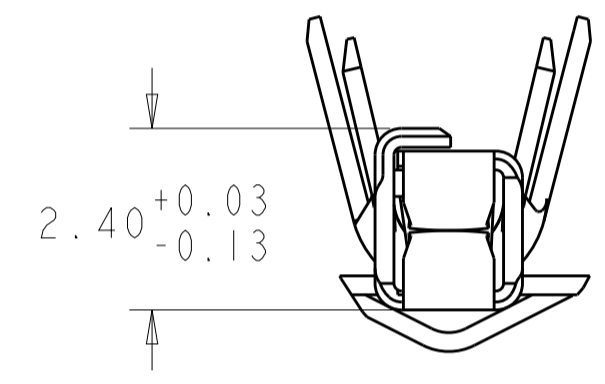
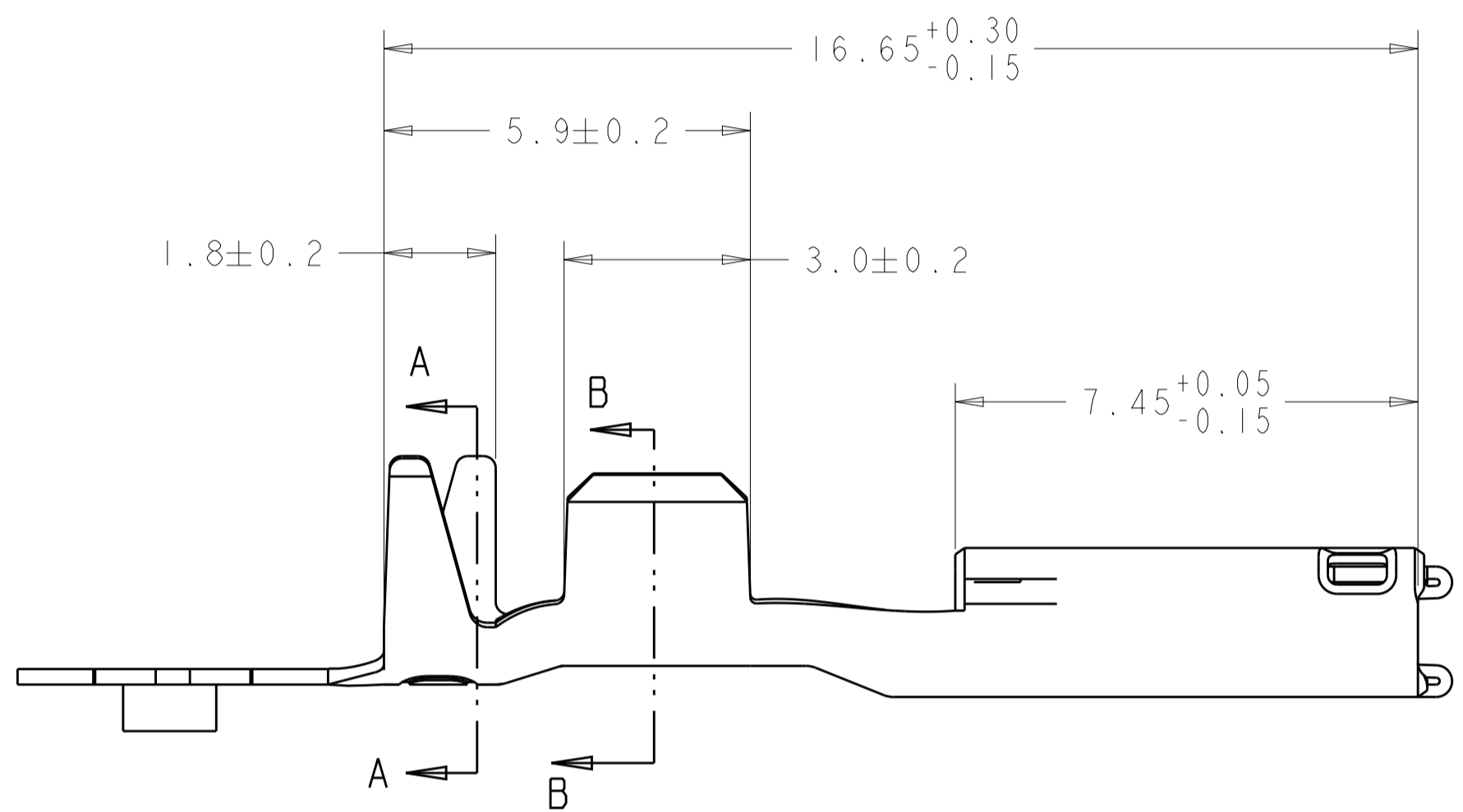
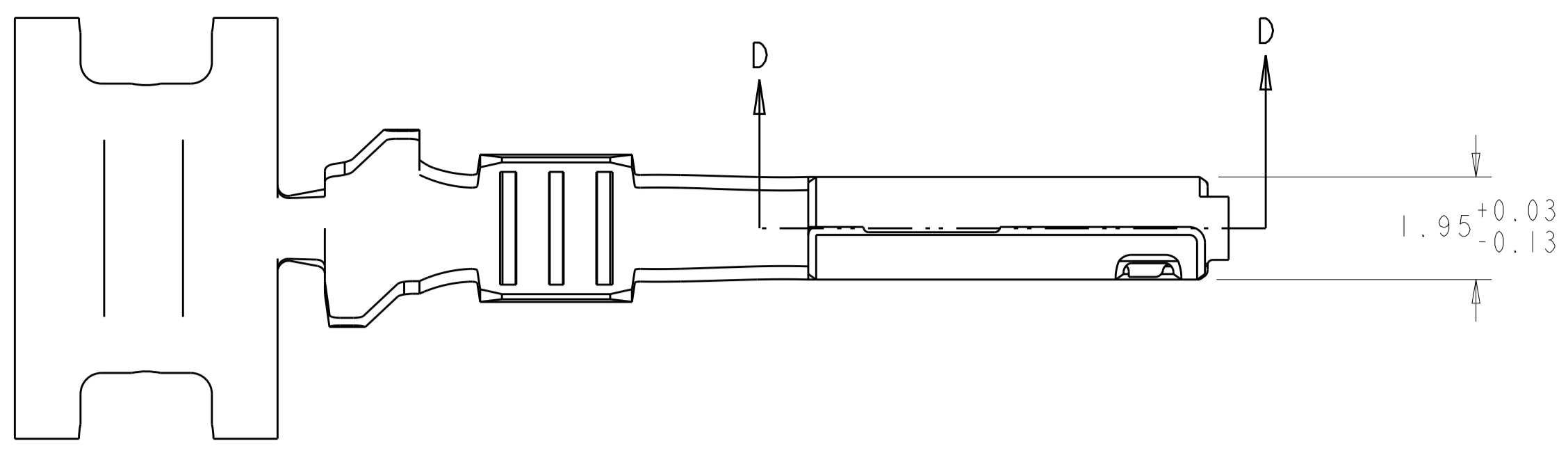
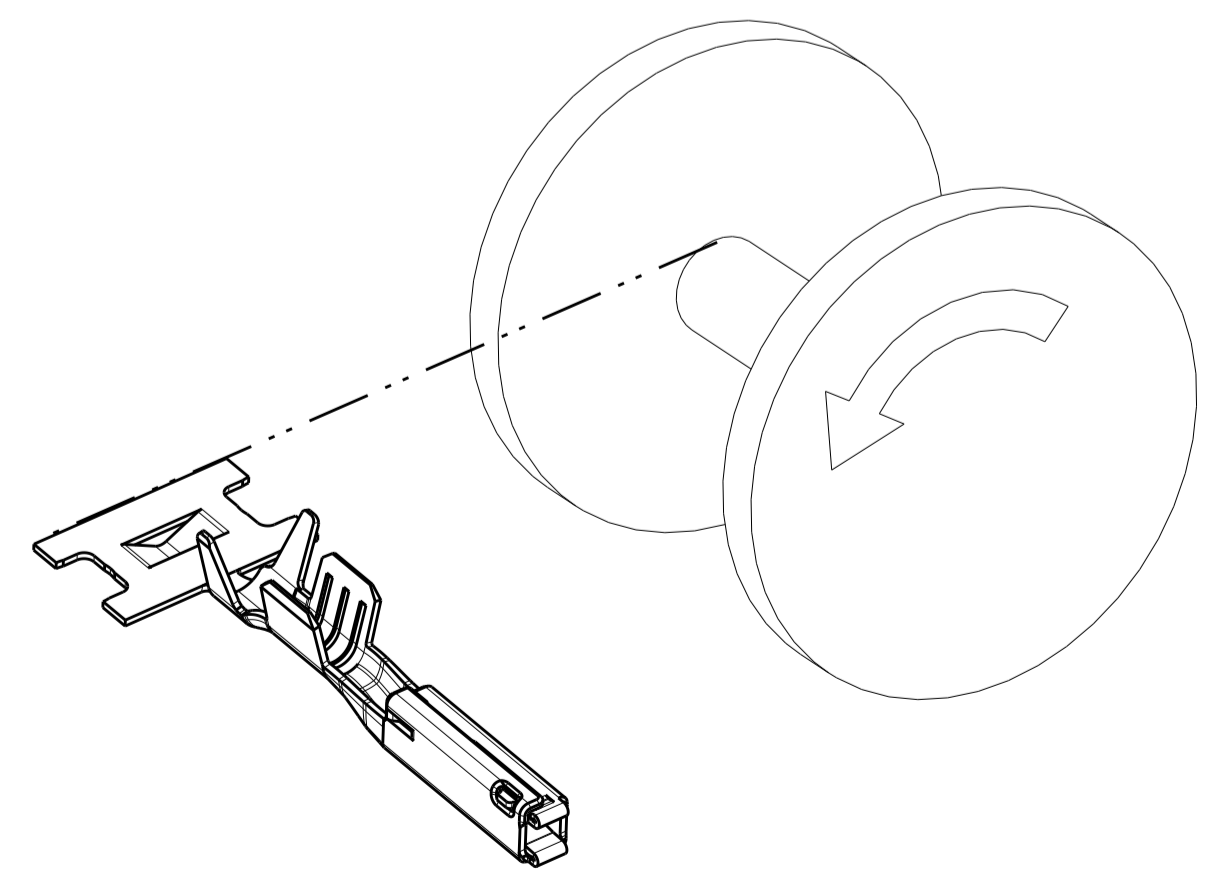
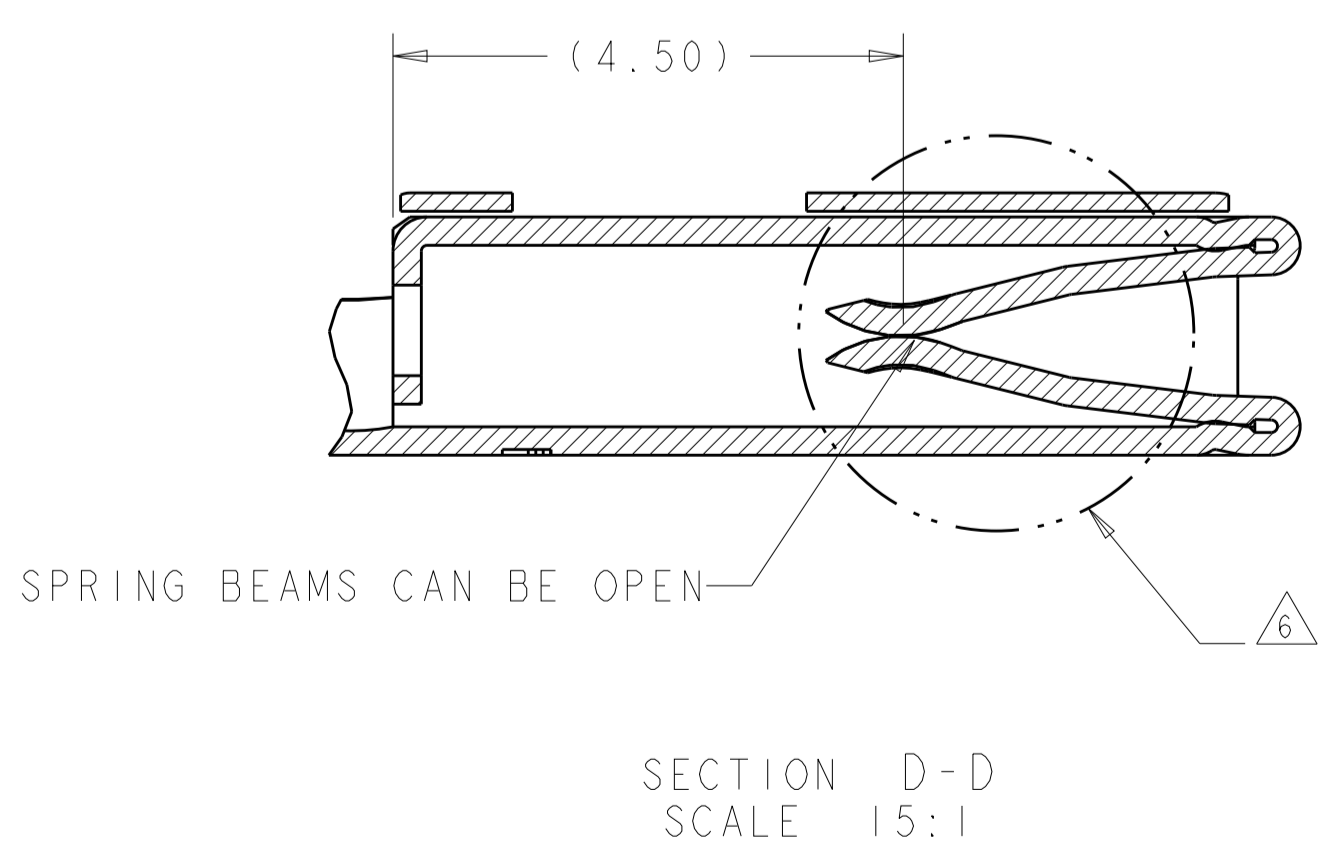
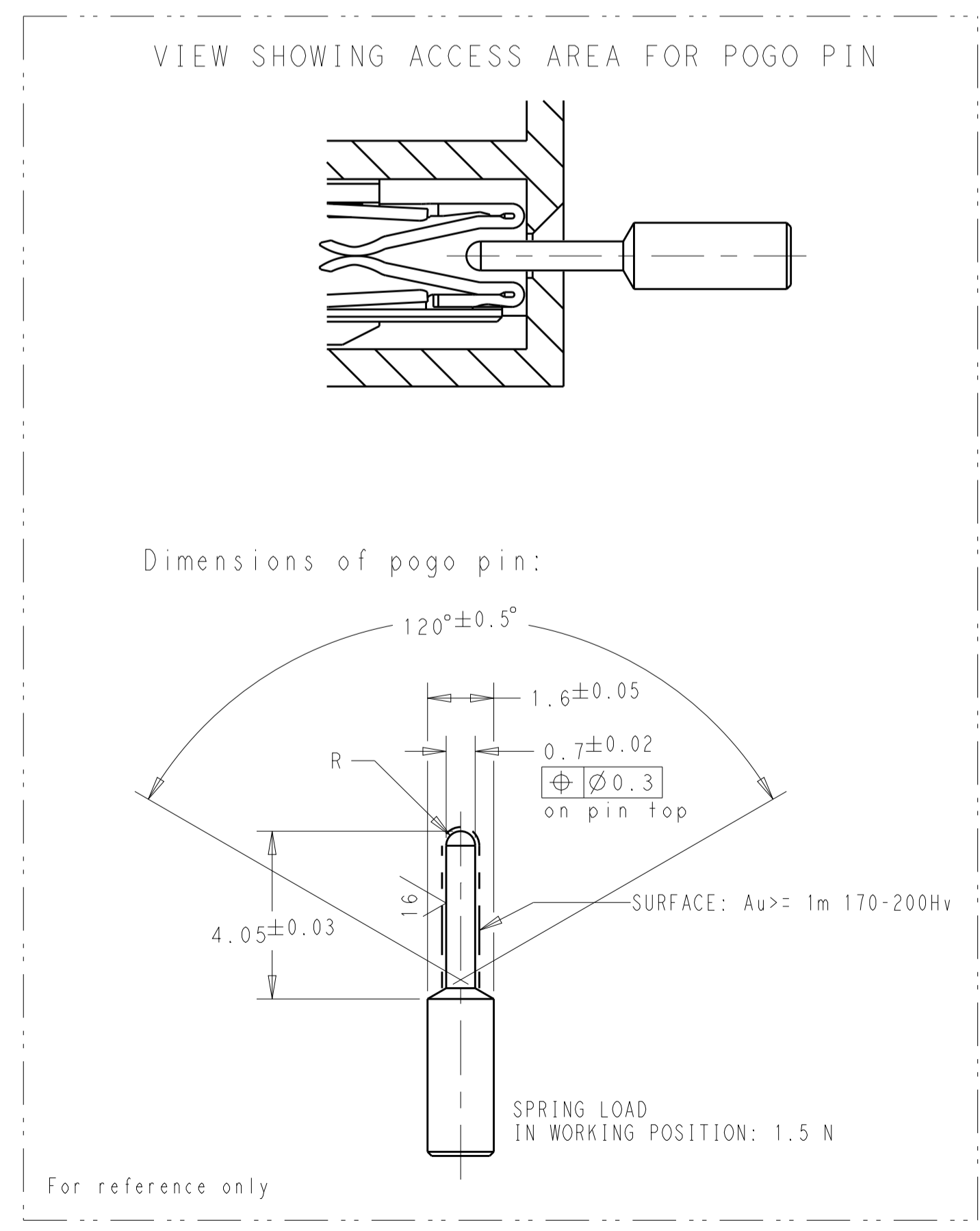
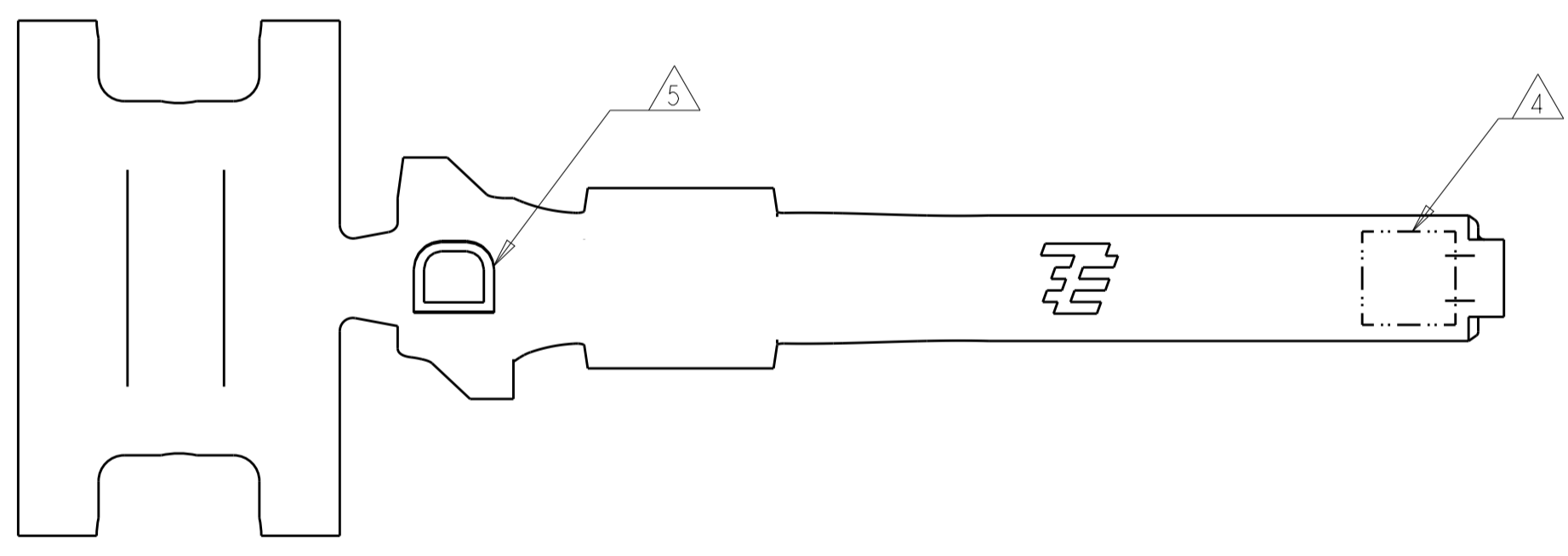
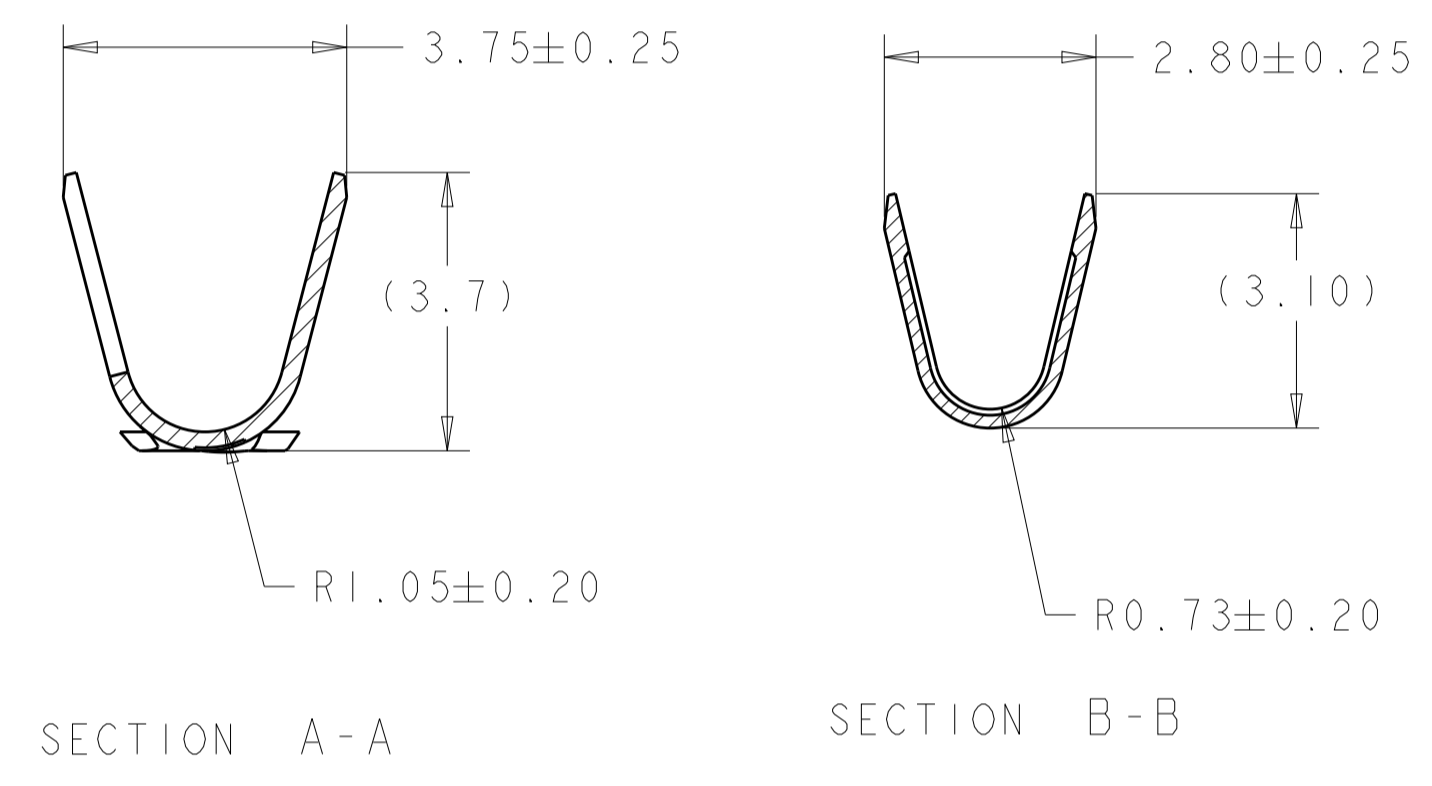


REVISIONS				
P.	LTM	DESCRIPTION	DATE	DWN APVD
A1		REVISED PER ECO-09-013600	30JUL2009	DLD WTW
A2		REVISED PER ECO-15-008745	12JUN2015	DLD WTW



REF VIEW  
SCALE 8:1

- 1 MATERIAL: COPPER ALLOY
  - 2 FINISH: PRE-PLATED WITH 1.00µm MIN TIN-SILVER PLATE (PLATING APPLIES OVER ALL CONTACT SURFACES)
  - 3 FINISH: PRE-PLATED WITH 2.00µm MIN TIN (PLATING APPLIES OVER ALL CONTACT SURFACES)
  - 4 LETTER "T" WITH HORIZONTAL BAR INDICATES THAT PRODUCT IS PLATED WITH A SPECIAL TIN PLATE. APPLICABLE TO 1924880-1 ONLY.
  - 5 MARK CRIMP CODE "D"
  - 6 OPTIMOL (UNDILUTED) LUBRICATION IN THIS AREA.
7. DIE FEED IS 8.00mm



REELING DIRECTION  
SCALE 4:1

NOT RELEASED FOR PRODUCTION	NONE	3	1924880-2
	4	2	1924880-1
	FINISH INDICATOR	FINISH	PART NUMBER

THIS DRAWING IS A CONTROLLED DOCUMENT.		DWN F. KINSEY 28APR2009	TE Connectivity	
DIMENSIONS: mm		CHK F. KINSEY 28APR2009	NAME	
TOLERANCES UNLESS OTHERWISE SPECIFIED:		APVD W. WELLSKY 28APR2009	PRODUCT SPEC	
0 PLC	±	APPLICATION SPEC		
1 PLC	±0.15	SIZE CAGE CODE DRAWING NO		
2 PLC	±	RESTRICTED TO		
3 PLC	±	MATERIAL		
4 PLC	±	WEIGHT 0.24 G		
ANGLES	±	CUSTOMER DRAWING		
FINISH	SEE TABLE	SCALE 10:1 SHEET 1 OF 1 REV A2		