

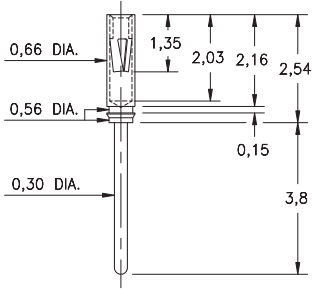
PIN RECEPTACLES

**FOR 0,20 - 0,33 DIAMETER PINS (#04 CONTACT)
AND 0,30 - 0,43 DIAMETER PINS (#10 CONTACT)
(SEE SPECIFIC CONTACT RANGE ON PAGE 250)**

8210

8210-0-15-15-04-27-04-0

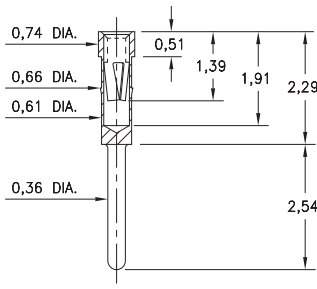
Press-fit in 0,61/0,68 stepped hole



0439

0439-0-15-15-04-27-04-0

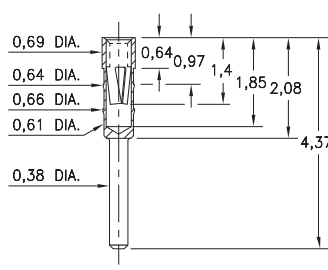
Press-fit in 0,64 mounting hole



4518

4518-0-15-15-04-27-04-0

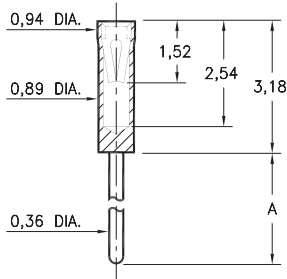
Press-fit in 0,64 mounting hole



X464

X464-X-15-XX-10-XX-04-0

Solder mount in 0,41 min. mounting hole

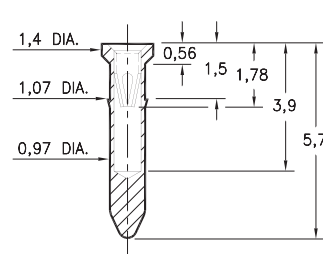


Basic Part Number	Length A
0464-0	3,18
0464-1	6,35
6464-0	6,99

9225

9225-0-15-XX-10-XX-10-0

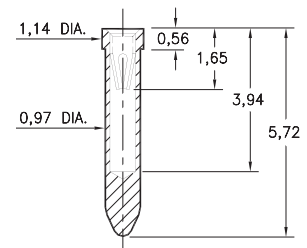
Press-fit in 1,0 mounting hole



8947

8947-0-15-XX-10-XX-10-0

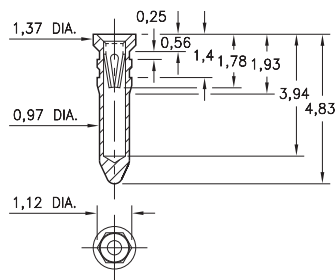
Solder mount in 1,02 min. mounting hole
Also available on 24mm wide carrier tape:
1,350 parts per 330mm reel
See page 194.1 for Tape & Reel details



8225

8225-0-15-XX-10-XX-10-0

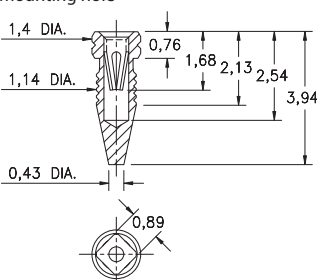
Hex press-fit in 1,07 plated through-hole



4993

4993-0-15-15-10-27-10-0

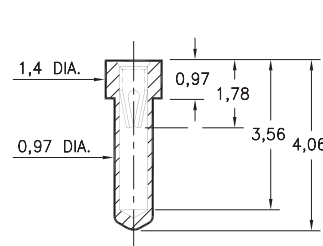
Compliant press-fit in 1,04 - 1,12 Dia. mounting hole



0529

0529-0-15-XX-10-XX-10-0

Solder mount in 1,02 min. mounting hole



SPECIFICATIONS:

Shell Material: Brass Alloy 360, 1/2 Hard

Contact Material: Beryllium Copper Alloy 172, HT

Dimensions: Millimeters

Tolerances On: Lengths: ± 0,13

Diameters: ± 0,051

Angles: ± 2°



ORDER CODE: XXXX - X - XX - XX - XX - XX - 0

BASIC PART #

SPECIFY SHELL FINISH:

- 01 5,08µm TIN/LEAD OVER NICKEL
- ◆ 80 5,08µm TIN OVER NICKEL (RoHS)
- ◆ 15 0,25µm GOLD OVER NICKEL (RoHS)

SPECIFY CONTACT FINISH:

- 02 2,54µm TIN/LEAD OVER NICKEL
- ◆ 84 2,54µm TIN OVER NICKEL (RoHS)
- ◆ 27 0,76µm GOLD OVER NICKEL (RoHS)

SELECT CONTACT:

#04 or #10 CONTACT (DATA ON PAGE 250)
(CONTACTS #04 & #10 NOT INTERCHANGEABLE)

