

VX Series

Heat Sinks For TGHE Series and SOT-227 Devices



Ohmite introduces the VX series heat sinks for the Ohmite TGHE series and SOT-227 devices. This powerful heat sink has a unique profile that allows thru-hole soldering onto PCBs, panel mounting, or chassis mounting with fasteners. The VX series is an ideal heat sink that is designed for large power yet provides a light weight package and works with forced convection cooling.



SERIES SPECIFICATIONS

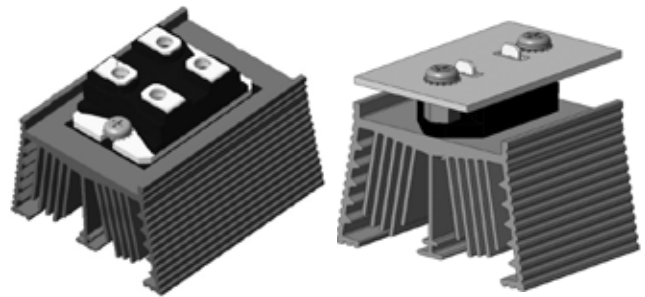
| Heatsink Part Number | Compatible parts/devices | Surface Area (in ² / mm ²) | Weight (oz / g) | Length L (in. / mm) | Spacing S (in. / mm) | Thread |
|-----------------------------|--------------------------|---|-----------------|---------------------|----------------------|--------|
| VXA-35-101E VXV-35-101E* | TGHE | 38 / 24,638 | 1.4 / 39 | 1.38 / 35 | 1.10 / 28 | M3 |
| VXA-55-101E VXV-55-101E* | SOT-227 | 60 / 38,717 | 2.2 / 62 | 2.17 / 55 | 1.18 / 30 | M3.5 |

* Note: Anodized parts are standard; degreased available on request.

CHARACTERISTICS

| | |
|-----------------------------------|---|
| Fastener | M3.5 Screw |
| Thermal Interface Material | Use as needed. Ohmite TGH-TP1 for SOT-227 devices |
| Material | AL 6063-T5 |
| Surface Finish | Black anodized or degreased |
| Thermal Conductivity | 209 W/m-K |

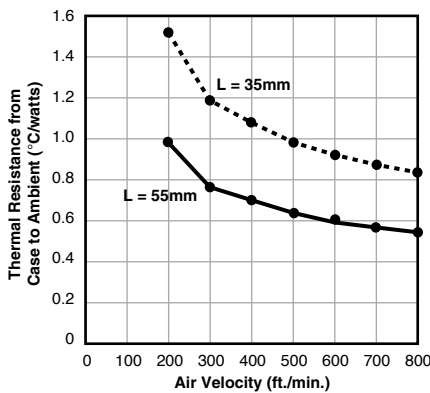
PCB Mounting Examples



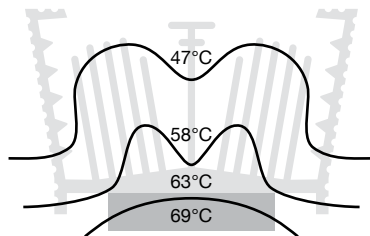
Heat sink assembly with a resistor and thermal interface material fastened with two M3.5 screws.

With Ohmite TGHE resistor

Thermal Performance

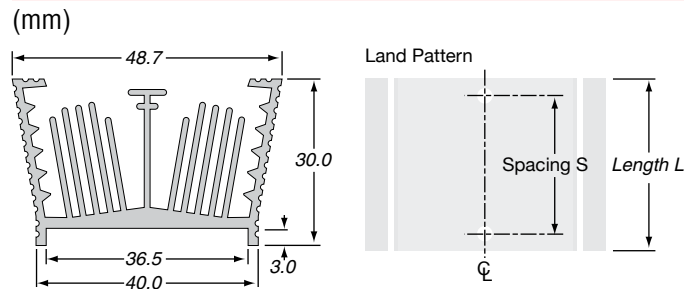


- Power dissipation is 100W, single device
- Heat load area 17 x 28mm metal tab
- Ducted air flow



Max. case temp. on SOT-227 (hot spot) is 69°C @ 5.08m/s (1000 fpm) ducted air flow.

DIMENSIONS



HOW TO ORDER

V X V - 5 5 - 1 0 1 E

Series: VX, Finish: A (anodized), V (degreased), Extrusion Length in mm: 55, Modifier: 101, RoHS Compliant: E