

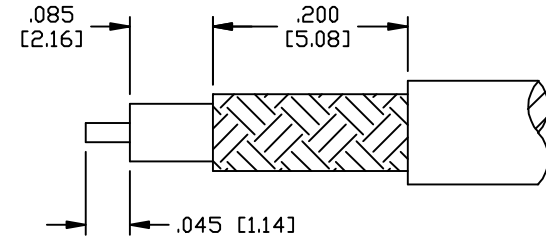
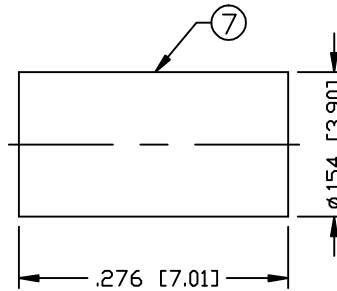
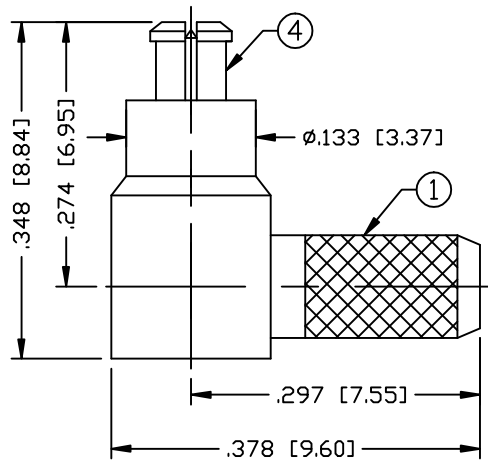
THIS DRAWING CONTAINS INFORMATION PROPRIETARY TO RF INDUSTRIES,  
 ANY UNAUTHORIZED USE OF THIS DRAWING IS EXPRESSLY PROHIBITED  
 WITHOUT WRITTEN PERMISSION FROM RF INDUSTRIES.  
 ANY VIOLATION IS PUNISHABLE UNDER U.S. COPYRIGHT LAWS.

ALL DIMENSIONS ARE REFERENCE ONLY

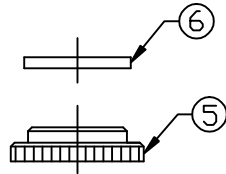
PART NO.

**RMC-6010-B1**

| REV | DESCRIPTION         | DWN | DATE   | APPROVED |
|-----|---------------------|-----|--------|----------|
| -   | ENGINEERING RELEASE | CZS | 9/4/00 | JDMc     |
|     |                     |     |        |          |
|     |                     |     |        |          |



RECOMMENDED STRIPPING DIMENSIONS



IMPEDANCE: 50 OHMS  
 FOR RG-316 DOUBLE SHIELD (RD-316)

|    |             |   |         |                   |
|----|-------------|---|---------|-------------------|
| 1  | BODY        | 1 | BRASS   | NICKEL, 100 MICRO |
| 2  | INSULATOR   | 1 | PTFE    | ----              |
| 3  | PIN         | 1 | P. Cu.  | GOLD, 30 MICRO    |
| 4  | GROUND RING | 1 | Be. Cu. | GOLD, 3 MICRO     |
| 5  | CAP         | 1 | BRASS   | NICKEL, 100 MICRO |
| 6  | INSULATOR   | 1 | PTFE    | ----              |
| 7  | FERRULE     | 1 | BRASS   | NICKEL, 100 MICRO |
| 8  |             |   |         |                   |
| 9  |             |   |         |                   |
| 10 |             |   |         |                   |
| 11 |             |   |         |                   |
| 12 |             |   |         |                   |
| 13 |             |   |         |                   |
| 14 |             |   |         |                   |

|           |          |
|-----------|----------|
| 007777    |          |
| DRAWN     | 12/19/00 |
| JDMs      |          |
| CHECKED   |          |
| ORJ DRAWN | 12/19/00 |
| C. ZUNIGA |          |
| APPROVALS | DATE     |

UNLESS OTHERWISE SPECIFIED:  
 1. REMOVE ALL BURRS  
 2. BREAK ALL CORNERS & EDGES .005 R. MAX.  
 3. CHAMFER 1ST & LAST THREADS 45°  
 4. SURFACE ROUGHNESS 63 FINISH MIL-STD-10  
 5. DIAMETERS ON COMMON CENTERS TO BE CONCENTRIC WITHIN .002 T.I.R.  
 6. ALL DIMENSIONS ARE AFTER PLATING.

| DIMENSIONS ARE IN INCHES AND [MILLIMETERS] |                 |
|--|-----------------|
| UNLESS OTHERWISE NOTED TOLERANCES ARE:     |                 |
| DECIMALS                                   | DIAMETER        |
| .xxx±.003 [.08]                            | .xxx±.001 [.03] |
| .xx±.005 [.13]                             | .xx±.003 [.08]  |

**RF connectors**  
 DIVISION OF RF INDUSTRIES, LTD.

7610 MIRAMAR RD  
 SAN DIEGO, CA 92126  
 (858) 549-6340  
 (858) 549-6345 FAX

**MC PLUG**

RIGHT ANGLE, CRIMP

| SIZE       | CABLE GROUP | DWG NO.          | REV          |
|------------|-------------|------------------|--------------|
| A          | B1          | RMC-6010-B1      | -            |
| SCALE: NTS |             | CAD FILE OUTLINE | SHEET 1 OF 1 |