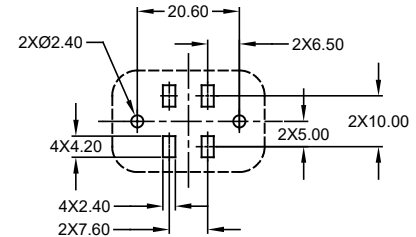
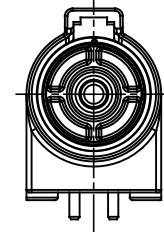


REVISIONS					
REV	ECO	DESCRIPTION	DATE	BY	APPR
A1	-	RELEASED DRAWING	AUG-06-20	VITO	TOMMY



NOTES: UNLESS OTHERWISE SPECIFIED

- MATERIAL:  
HOUSING: THERMOPLASTIC; COLOR:BLACK  
CONTACT: COPPER ALLOY  
SEAL: SILICONE RUBBER
- MODIFICATIONS :RIGHT ANGLE PCB MOUNT,SCREW BOSS
- SPECIFICATIONS:  
3.1 CURRENT RATING: 100 AMPS  
3.2 OPERATING TEMPERATURE: -55°C TO +125°C  
3.3 DIELECTRIC WITHSTANDING VOLTAGE: LESS THAN 2 MILLIAMPS CURRENT LEAKAGE @ 3000 VOLTS AC.  
3.4 INSULATION RESISTANCE: 1000 MEGOHMS MIN @ 25°C.  
3.5 MOISTURE RESISTANCE: IP67 (MATED CONDITION)  
3.6 MATING CYCLE DURABILITY: 100 CYCLES  
3.7 RoHS COMPLIANT
- MATING PART:ATHD06-1-4S PLUG
- ALL DIMENSIONS ARE FOR REFERENCE USE ONLY.

ATFD13-1-4P-BM1X VARIANTS	
CONTACT PLATING	PART NUMBER
MATING END: GOLD PCB END: TIN	ATFD13-1-4P-BM11
MATING END: NICKEL PCB END: TIN	ATFD13-1-4P-BM13

RECOMMENDED PCB LAYOUT

QUANTITY	ATFD13-1-4P-BM1X	DESCRIPTION	ITEM
	PART NUMBER	DESCRIPTION	
MATERIALS LIST			
UNLESS OTHERWISE SPECIFIED		SIGNATURES DATE	
1) All dimensions are in metric(mm).		DRAWN: VITOLI AUG-06-20	
2) Tolerances are as follows:		CHECKED: ORION LI AUG-08-20	
1 PL DEC ±0.30		ENGINEER:	
2 PL DEC ±0.15		APPROVAL: TOMMY XIE AUG-08-20	
3 PL DEC ±0.08		CUSTOMER:	
3) Note reference =		THIS DRAWING IS SUPPLIED FOR INFORMATION ONLY. DESIGN FEATURES, SPECIFICATIONS AND PERFORMANCE DATA SHOWN HEREON ARE THE PROPERTY OF THE AMPHENOL CORPORATION. NO RIGHTS OF REPRODUCTION ARE IMPLIED. ALL DIMENSIONS ARE SUBJECT TO NORMAL MANUFACTURING VARIATIONS.	
MATERIAL SPECIFICATIONS:		Sine Systems - www.amphenol-sine.com 44724 Morley Drive Clinton Township, MI 48036	
PROCESS SPECIFICATIONS:		1 POS, RIGHT ANGLE RECEPTACLE, PIN, ATHD SERIES, SCREW BOSS, BOARD MOUNT	
NEXT ASSY:		SIZE TYPE DWG NO. REVISION	
		B C- ATFD13-1-4P-BM1X A1	
		SCALE NONE BOARDLOCK SHEET 1 OF 1	

TITLE: 1 POS, RIGHT ANGLE RECEPTACLE, PIN AND SCREW BOSS, BOARD MOUNT  
DWG NO.: ATFD13-1-4P-BM1X  
REV: A1  
SHEET 1 OF 1