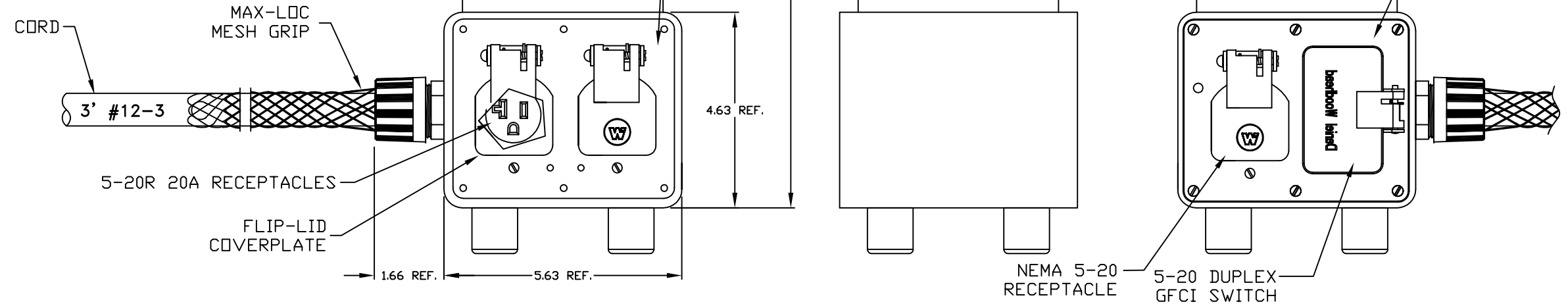
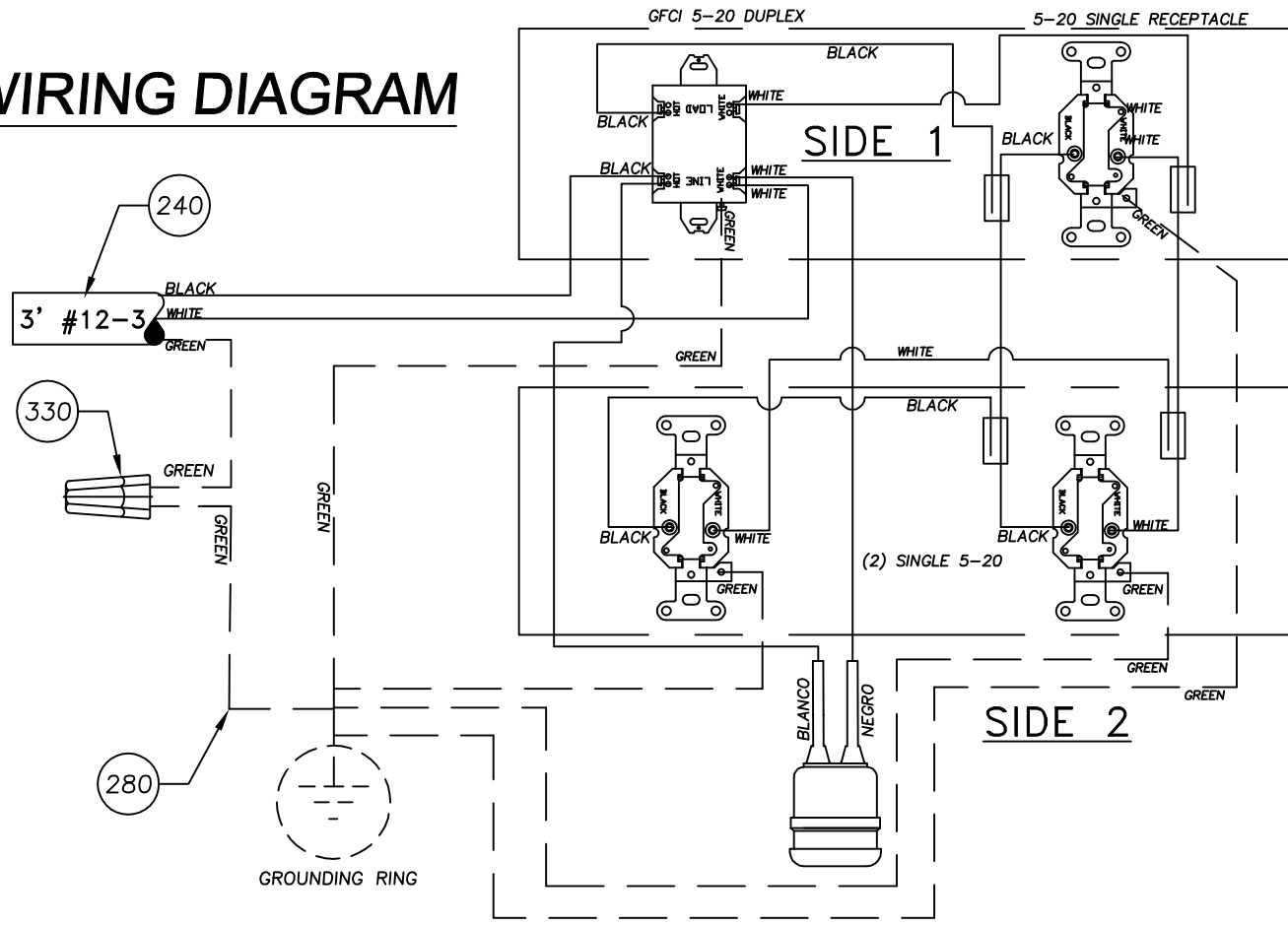


WIRING DIAGRAM



PIERCE #63-4449-0083	
QUOTE #A200903051	MATERIAL #1301350351
CUSTOMER APPROVAL SIGNATURE & DATE	
SIGNATURE	DATE

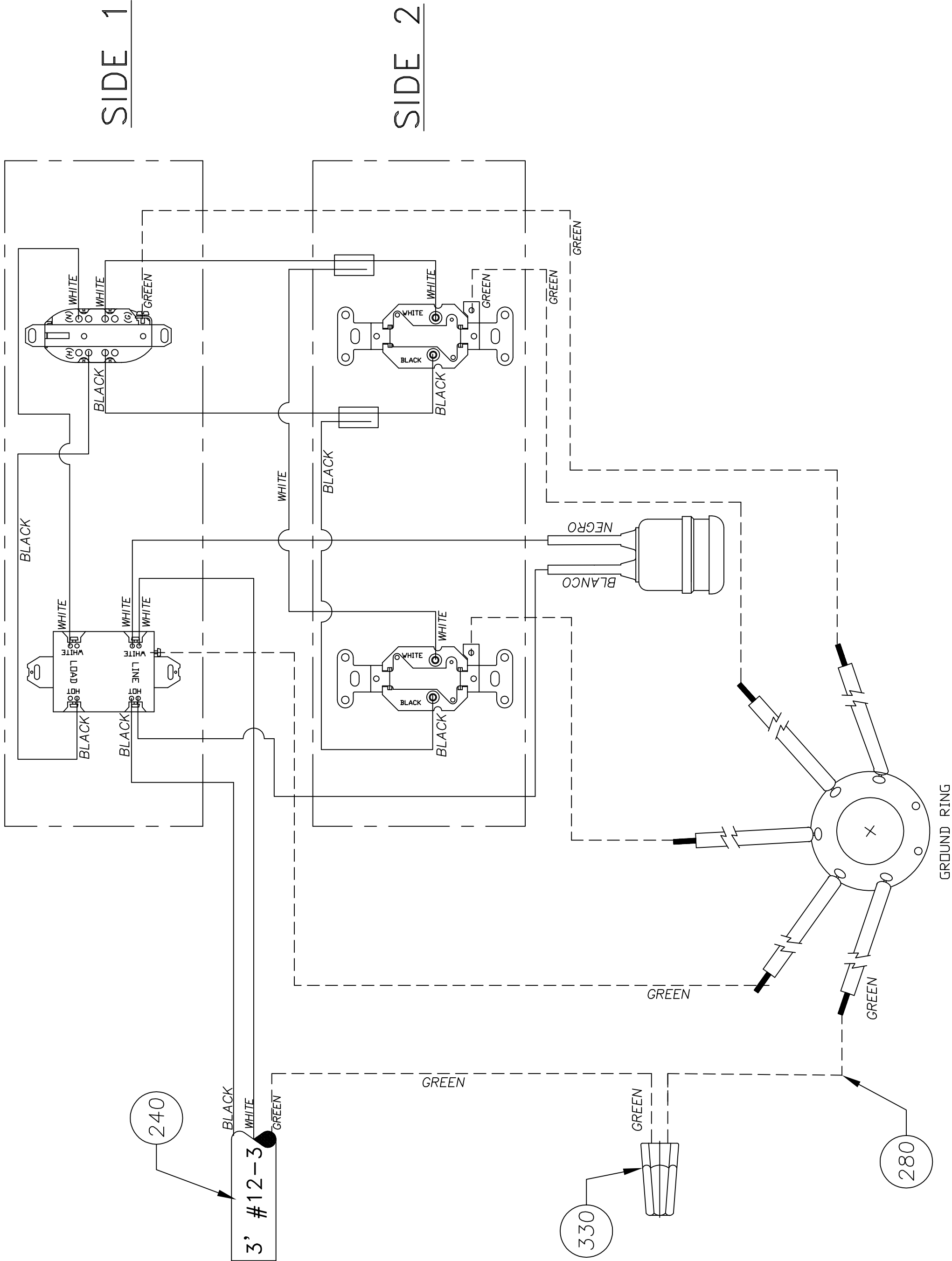
CUSTOMER APPROVAL DWG
 EC NO: WNA2009-0473
 DRWN: HKNEELAN 1/28/09
 CHKD: HKNEELAN 2009/01/29
 APPR: DTTTUS 2009/02/06

QUALITY SYMBOLS
 ▽=0
 ▽=0

GENERAL TOLERANCES (UNLESS SPECIFIED)	
	mm INCH
4 PLACES	±.005 ±.002
3 PLACES	±.010 ±.005
2 PLACES	±.020 ±.010
1 PLACE	±.050 ±.020
ANGULAR ±.5°	
DRAFT WHERE APPLICABLE MUST REMAIN WITHIN DIMENSIONS	

DIMENSION STYLE	
INCH	
DRAWN BY	DATE
HKNEELAN	2009/01/29
CHECKED BY	DATE
HKNEELAN	2009/01/29
APPROVED BY	DATE
DWILLIAM	2009/01/29
MATERIAL NO.	
1301350351	

SCALE	DESIGN UNITS	THIRD ANGLE PROJECTION
NTS	INCH	
TITLE		
ILLUMINATED OUTLET BOC 3290 W/GFCI 20A & 5-20 (2)5-20 SINGLE & MESH		
MOLEX INCORPORATED		SHEET NO.
DOCUMENT NO.		1 OF 1
SD-130135-009		
THIS DRAWING CONTAINS INFORMATION THAT IS PROPRIETARY TO MOLEX INCORPORATED AND SHOULD NOT BE USED WITHOUT WRITTEN PERMISSION		

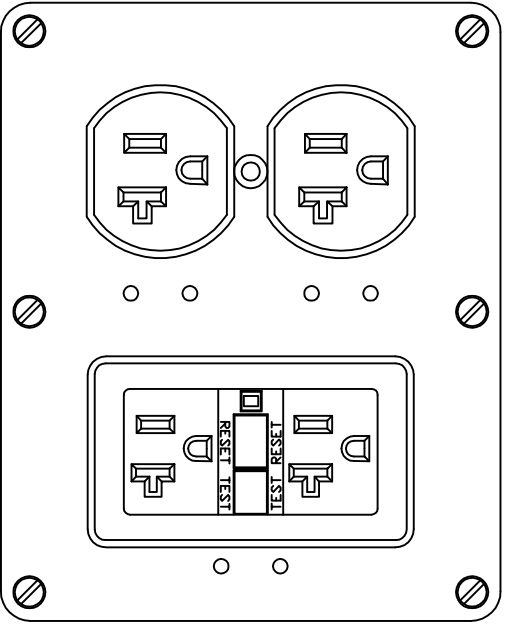


NOTE/NOTA:

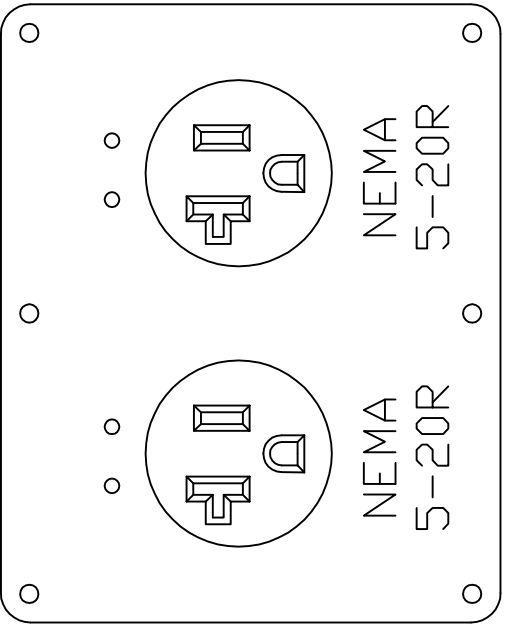
1. CUT BUBBLE # 280 INTO 5.
1. CORTE LA BURBUJA # 280 EN 5.
2. CUT BUBBLE # 300 INTO 3.
2. CORTE LA BURBUJA 300 EN 3.

REV	ECN	BY	DATE	DESCRIPTION	CKD
A	NBK06 -1109	AL	10/26/06	RELEASE DRAWING	D.C

LADO 1

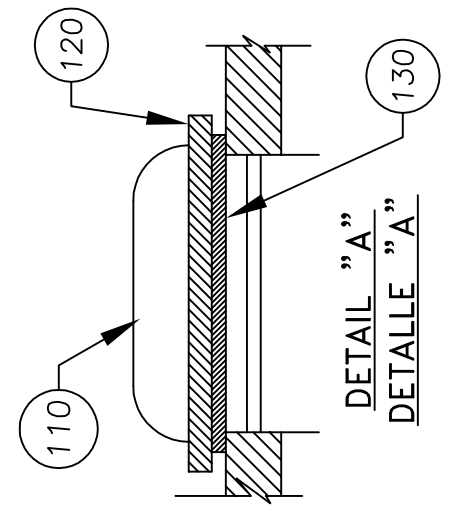
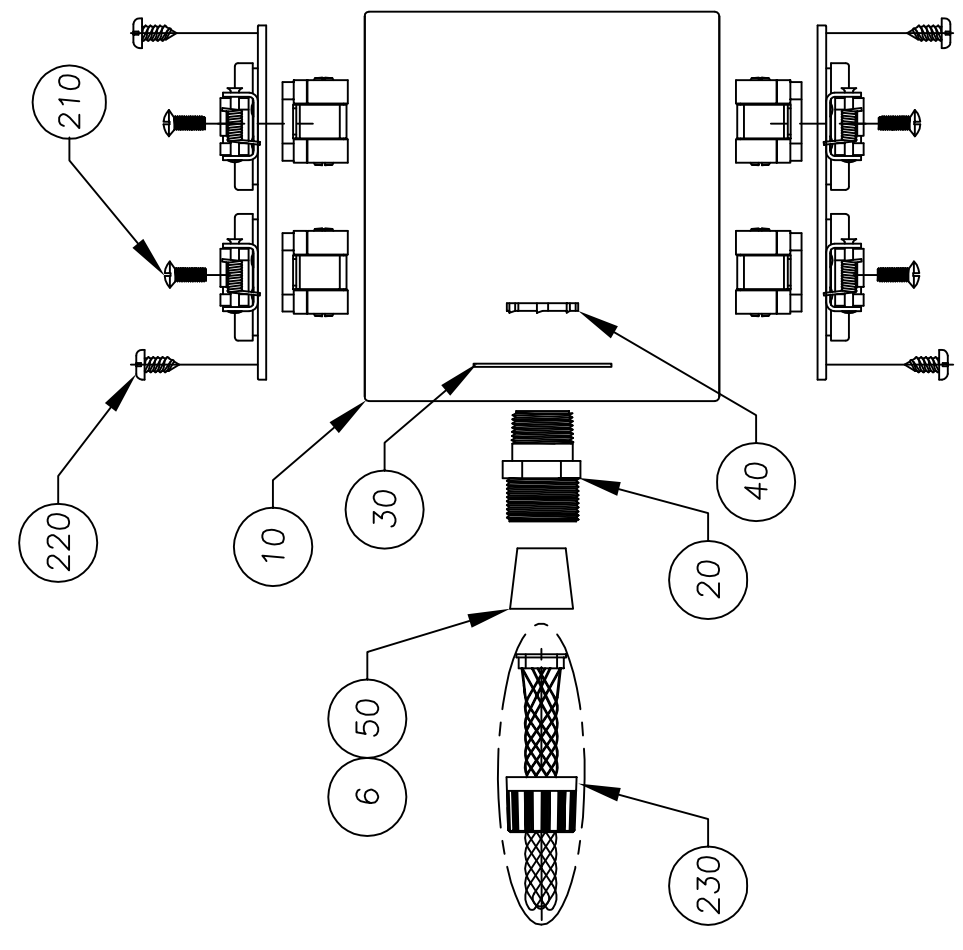
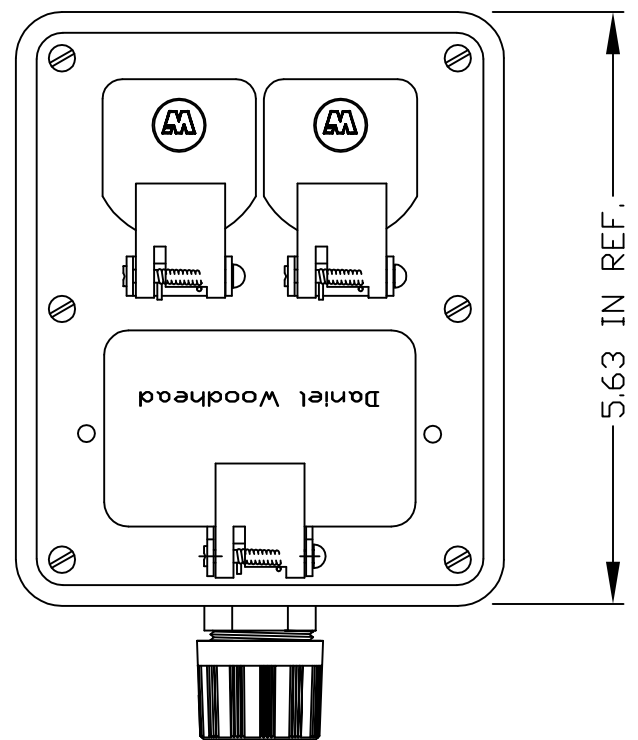


LADO 2



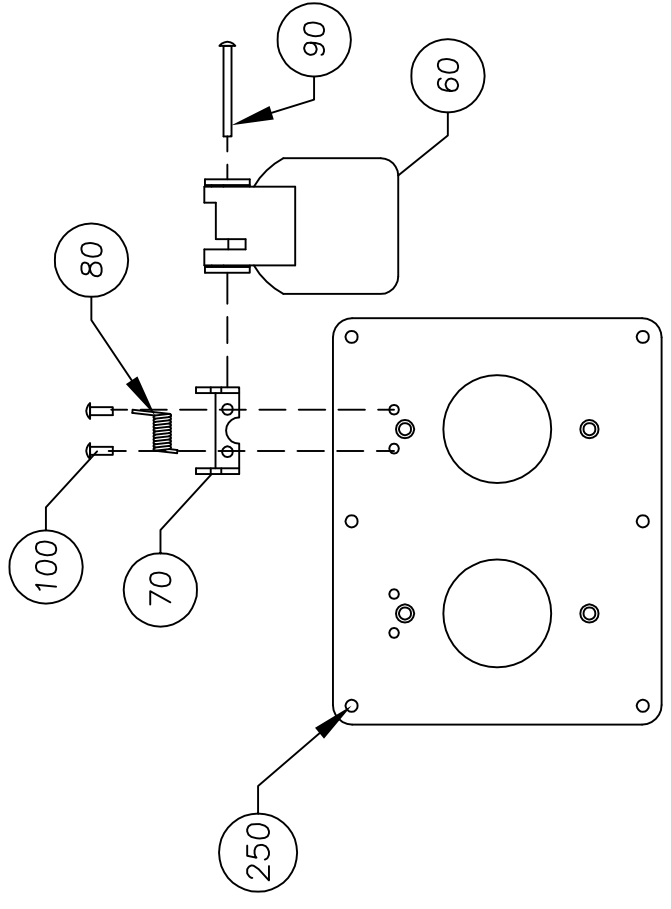
NEMA 5-15_GFCI &
L5-15 RECEPTACLE SHOWN

5361DW



DETAIL "A"
DETALLE "A"

SEE DETAIL "A" & "B"
VEA DETALLE "A" & "B"



240 3 FT #12/4C
YELLOW CORD

FLIP LIDS ASSEMBLY
ENSAMBLE DE LAS TAPAS RETRACTILES

LADO 1

DETAIL "B"
DETALLE "B"

DRAWN BY: A.L	DATE: 10/26/06	<p>Woodhead L. P. 3411 Woodhead Dr., Northbrook, IL 60062</p>	TITLE: 3290 W/FLIPLID COVERPLATE, 4 NEMA 5-20, 3 FT #12-4 SPLIT CIRCUIT WIRING	SIZE: A	DRAWING No. 09504	REV: A
CHECKED BY: H.K	DATE: 10/26/06		SCALE: —	PROJECT No. ESB06995	SHEET: 1 OF 2	
ENG. APPV: —	DATE: —		MATERIAL: —	FINISH: —	UNLESS OTHERWISE SPECIFIED TOLERANCES ARE: .X = ±.020 .XX = ±.010 .XXX = ±.005 FRACTIONAL = ± 1/64 ANGULAR = ± 1/2°	

DRAWING TYPE: ACAD	MAD
THIRD ANGLE PROJECTION	

THIS DRAWING CONTAINS INFORMATION PROPRIETARY TO THE WOODHEAD L.P. AND SHOULD NOT BE USED WITHOUT WRITTEN PERMISSION FROM SAME.