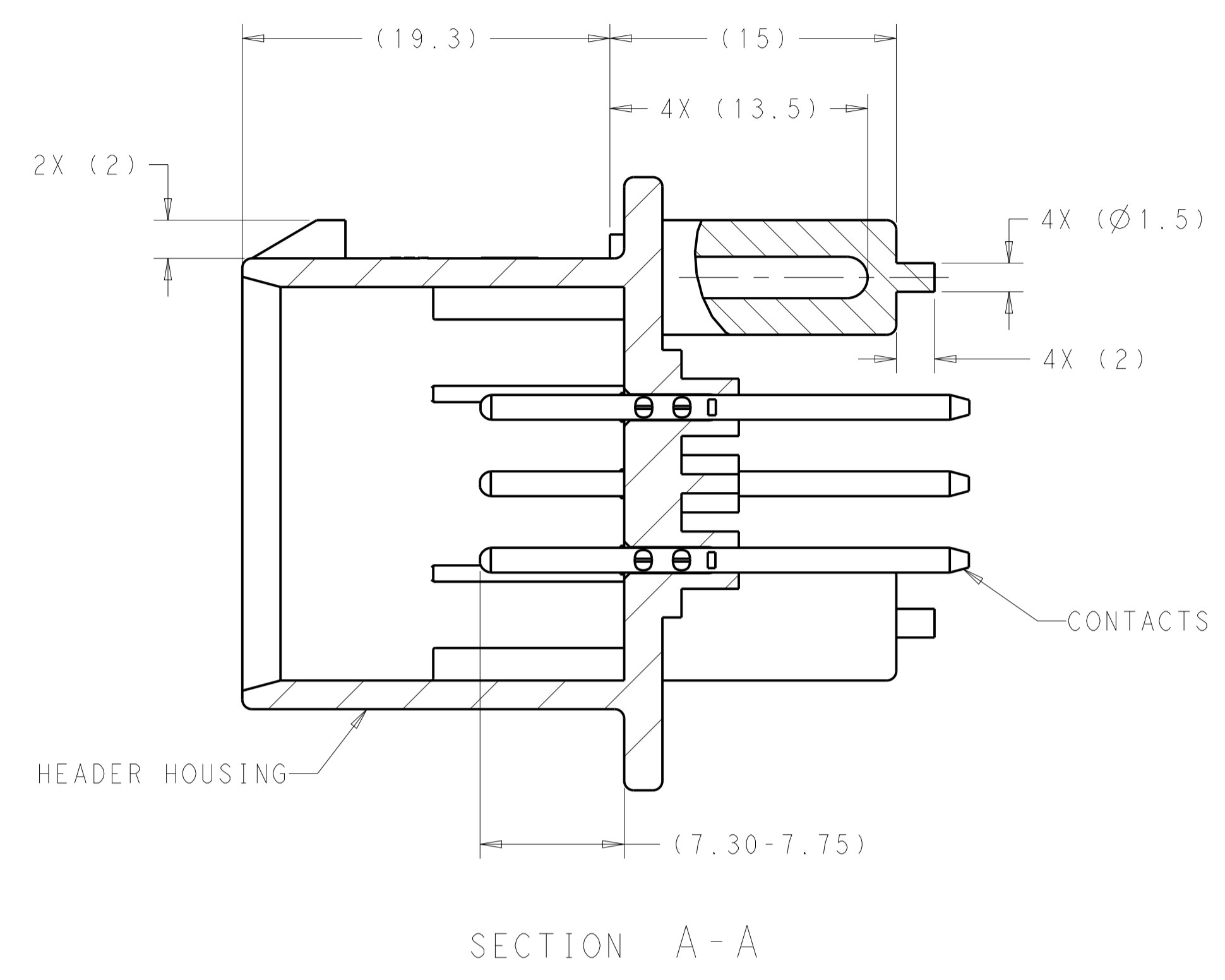
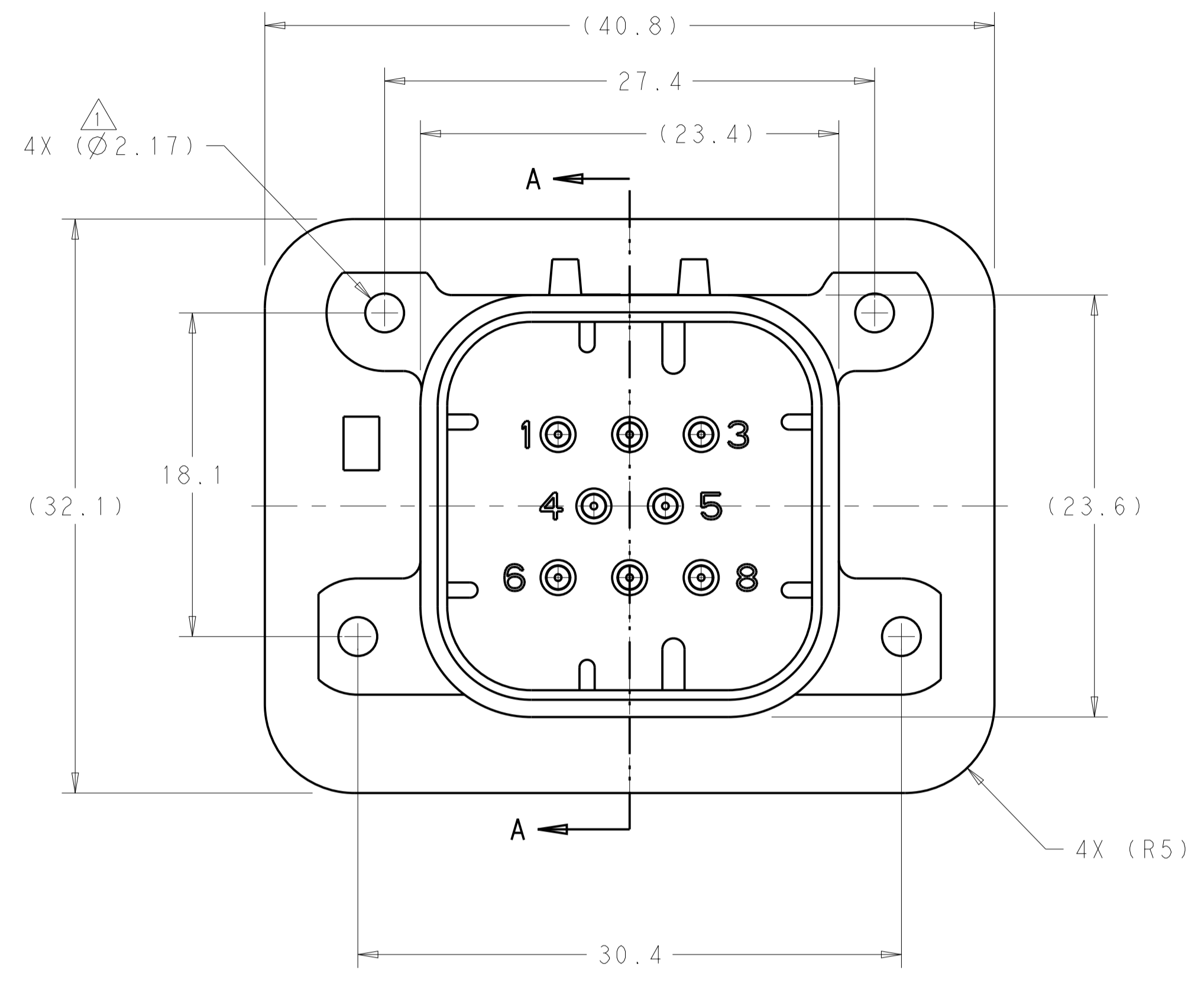
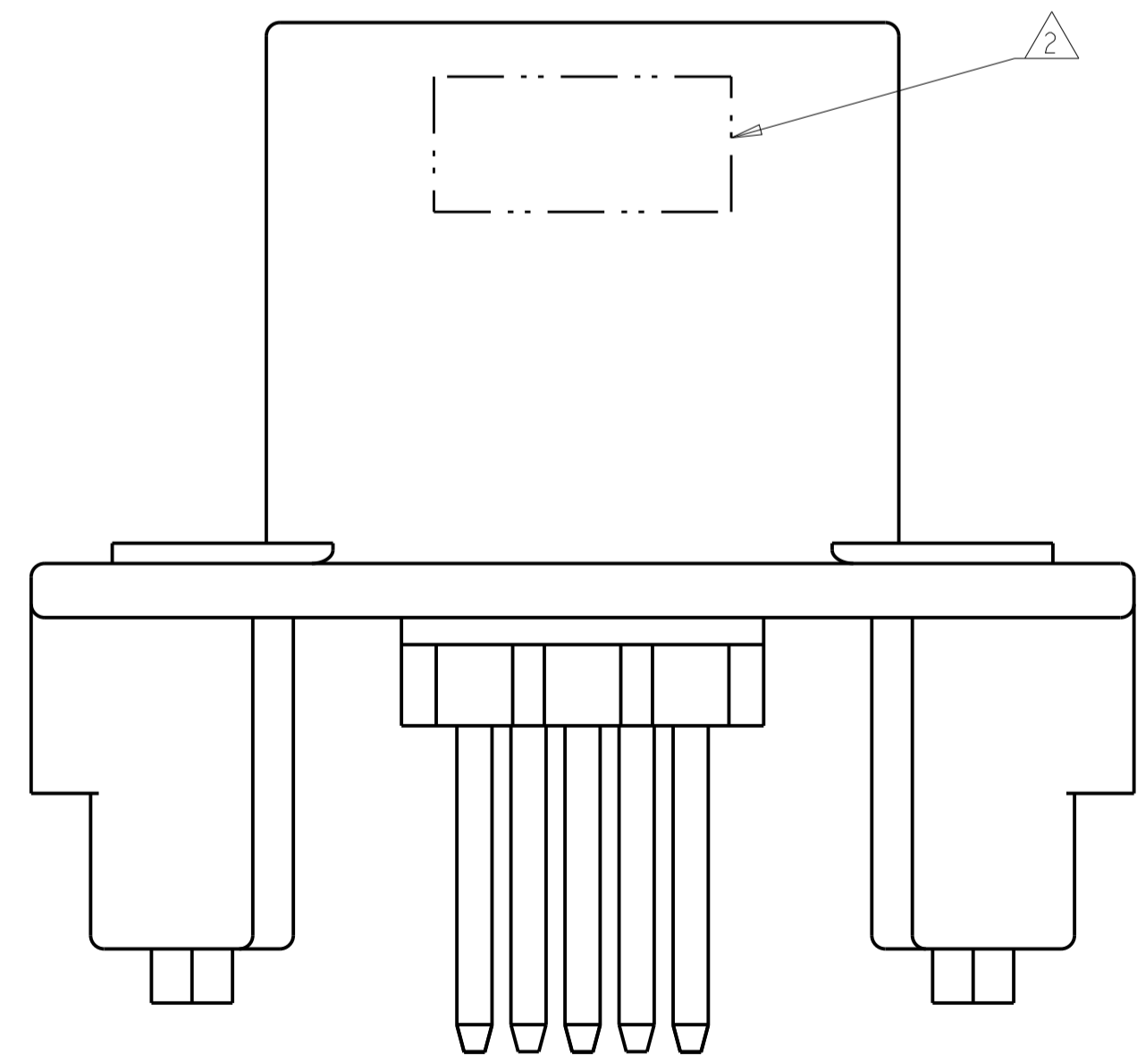


REVISIONS				
P.	LTN	DESCRIPTION	DATE	APVD
B11		REV PER ECO-21-001365	29JAN2021	DS DS



- ⚠ SUGGESTED MOUNTING SCREW SIZE IS $\varnothing 2.50-3.00\text{mm}$ [$\varnothing 0.099 - 0.118$ INCH] SELF TAPPING THREAD FORMING SCREW, SUCH AS DELTA PT, TO BE DRIVEN AT 0.6-0.8 N-m. THE CUSTOMER SHOULD TEST THE SCREW SIZE AND TYPE IN ORDER TO VERIFY THEIR SELECTION FOR THEIR APPLICATION.
- ⚠ DATE CODE IN THIS LOCATION USING 5 DIGIT CODE. FIRST 2 DIGITS = YEAR, SECOND 2 DIGITS = WEEK, LAST DIGIT = DAY.
- ⚠ MATERIALS: HEADER HOUSING - GLASS FILLED PBT; PINS - TIN OR GOLD PLATED BRASS.
- ⚠ HOUSING COLORS ARE MECHANICALLY KEYS TO MATE ONLY WITH IDENTICALLY COLORED PLUG ASSEMBLIES.
- 5. HEADER MATES TO PLUG ASSEMBLY 776286 WHICH USES REELED TERMINAL 770520 OR LOOSE PIECE TERMINAL 770854.

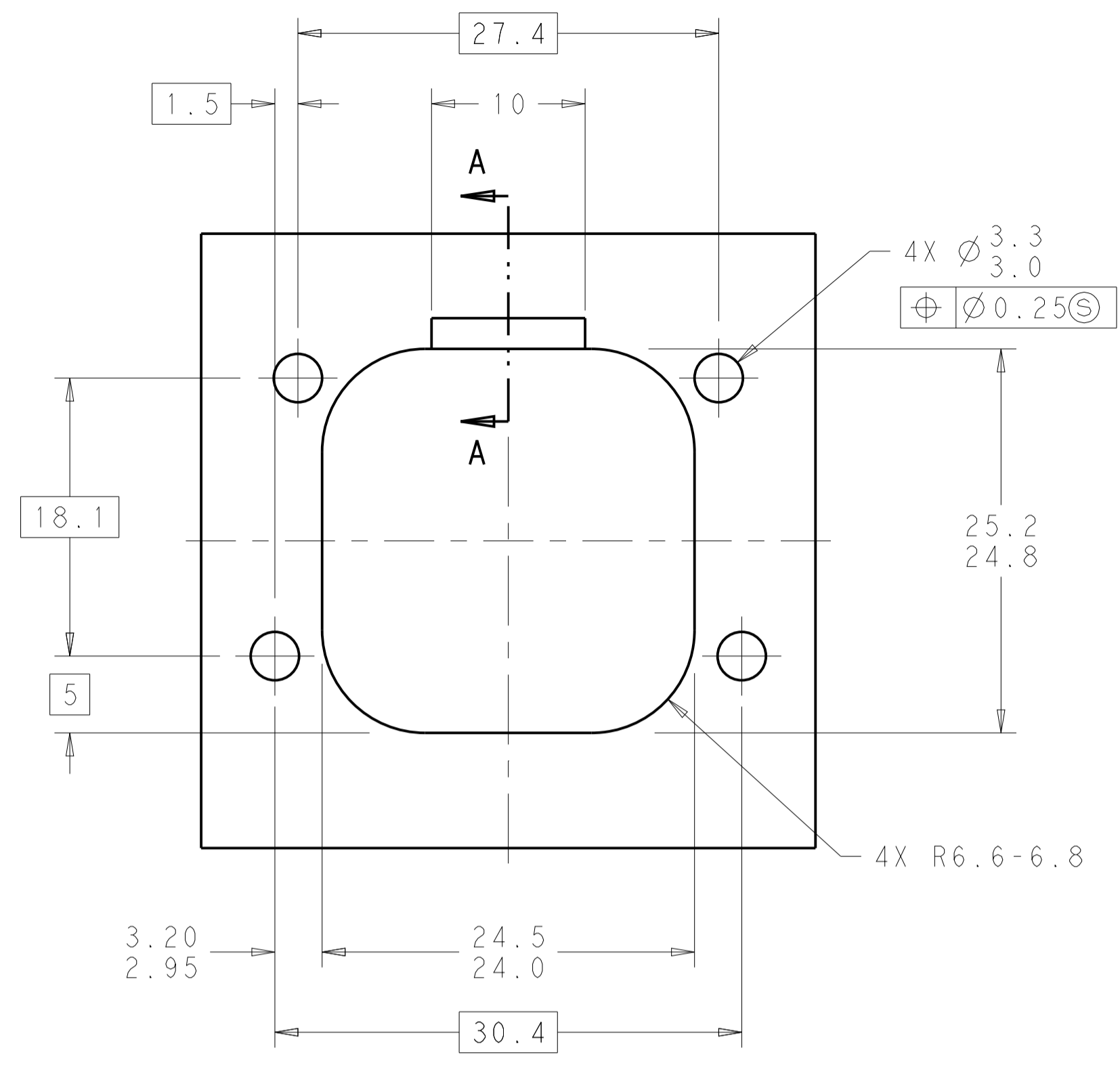


776275-1 & 1-776275-1 SHOWN

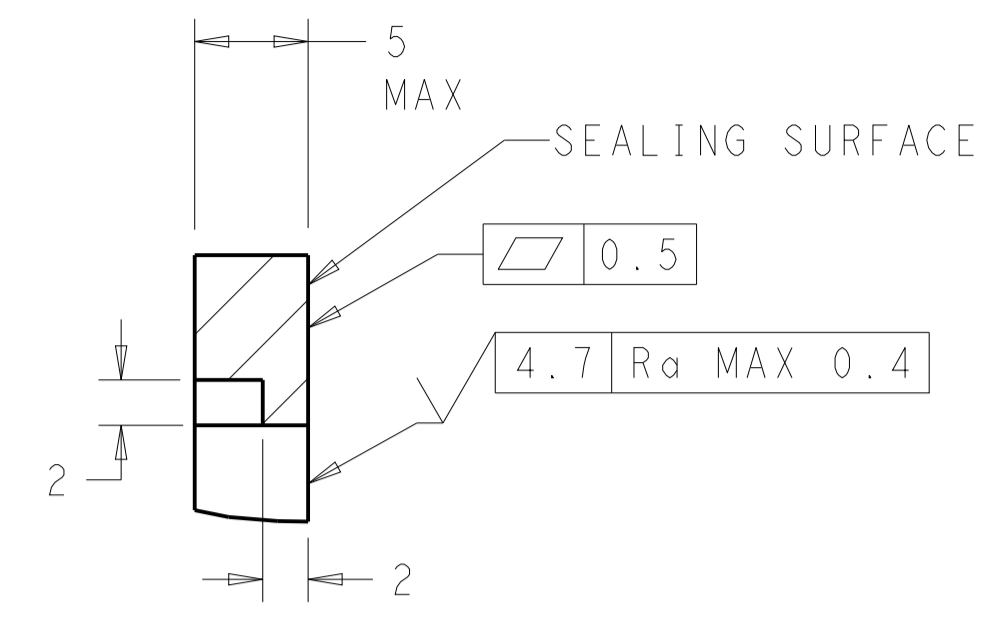
NATURAL	GOLD	1-776275-2
BLACK	GOLD	1-776275-1
NATURAL	TIN	776275-2
BLACK	TIN	776275-1
HEADER COLOR	PLATING	PART NUMBER

THIS DRAWING IS A CONTROLLED DOCUMENT.		OWN: D. STRAUSSER 29JAN2010	TE Connectivity				
DIMENSIONS: mm		CHK: D. STRAUSSER 22MAR2010					
TOLERANCES UNLESS OTHERWISE SPECIFIED:		APVD: D. STRAUSSER 27APR2010					
0 PLC ± 1 PLC ±0.2 2 PLC ± 3 PLC ± 4 PLC ± ANGLES ±		PRODUCT SPEC: 108-1329	NAME: HEADER ASSEMBLY, 8 POSITION, VERTICAL, AMPSEAL				
MATERIAL: 3		FINISH: 3	APPLICATION SPEC: 114-16016	SIZE: A	CAGE CODE: 00779	DRAWING NO: 776275	RESTRICTED TO: -
WEIGHT: 13.12g		CUSTOMER DRAWING		SCALE: 4:1	SHEET: 1 OF 2	REV: B11	

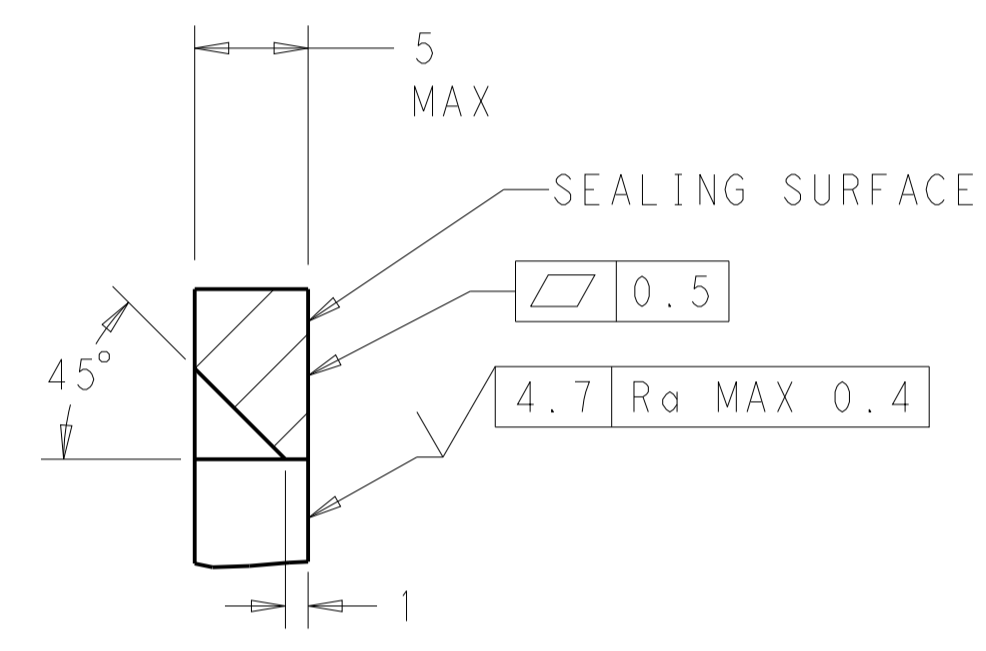
REVISIONS				
P.	LTN.	DESCRIPTION	DATE	APVD.
-	-	SEE SHEET 1	-	-



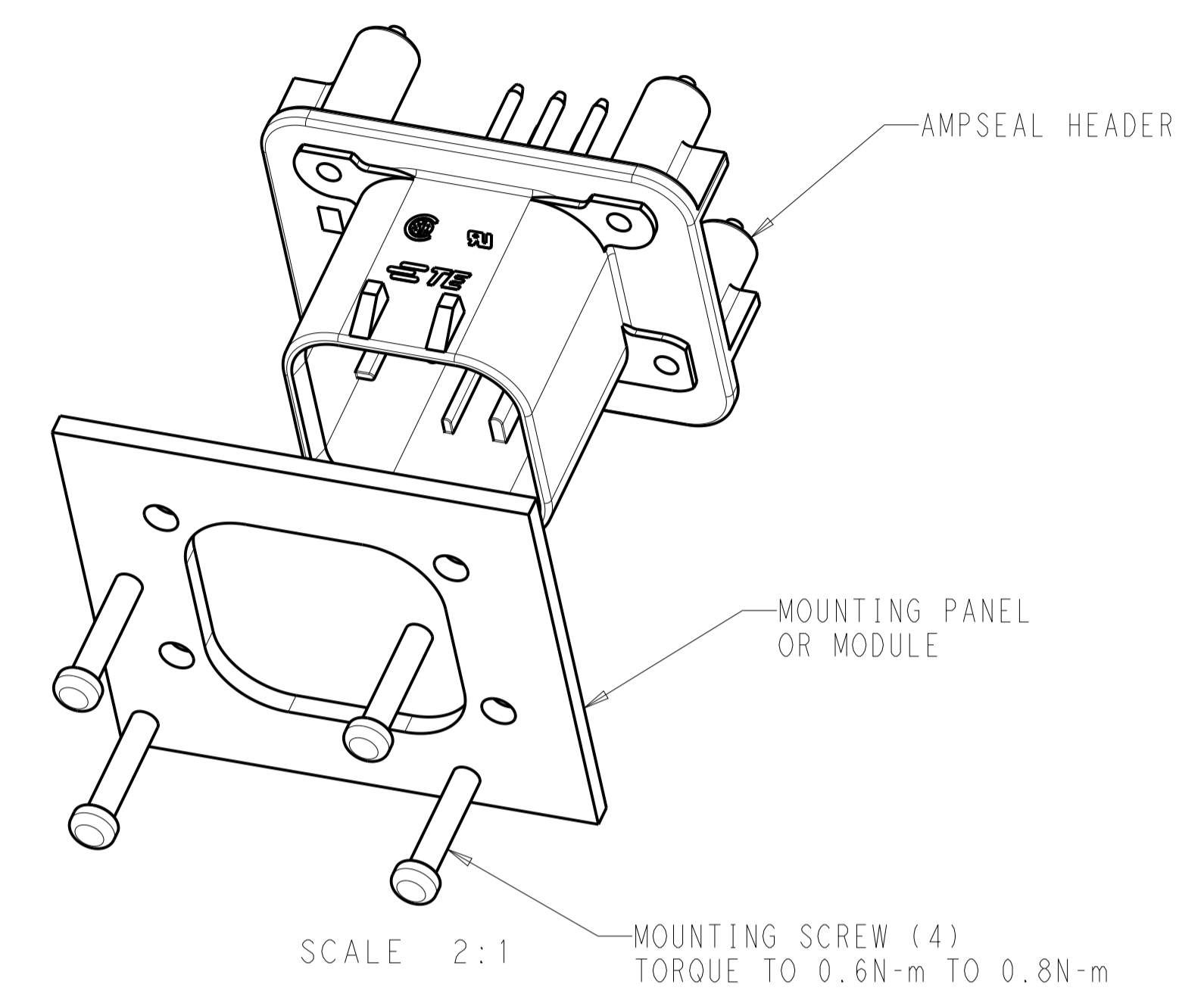
RECOMMENDED MOUNTING HOLE LAYOUT
 FOR 5.0 MAX THICK PANEL



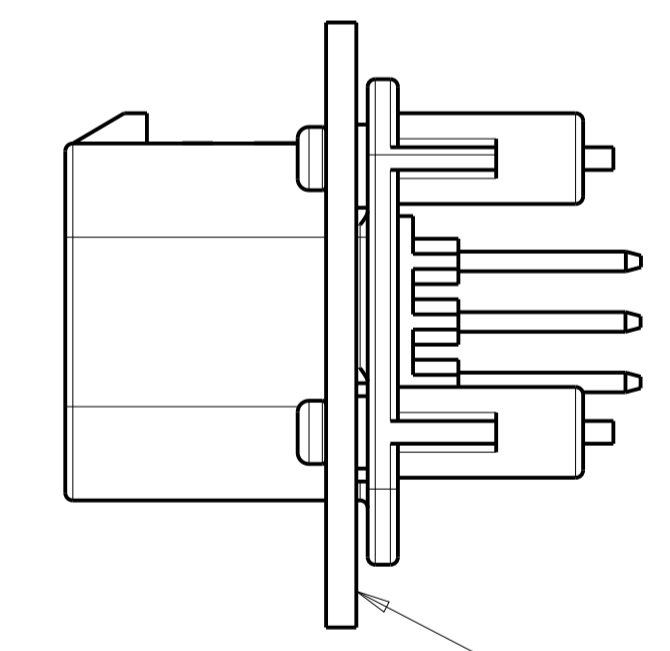
SECTION A-A
 OPTIONAL CONSTRUCTION IF PANEL
 THICKNESS IS GREATER THAN 2.0



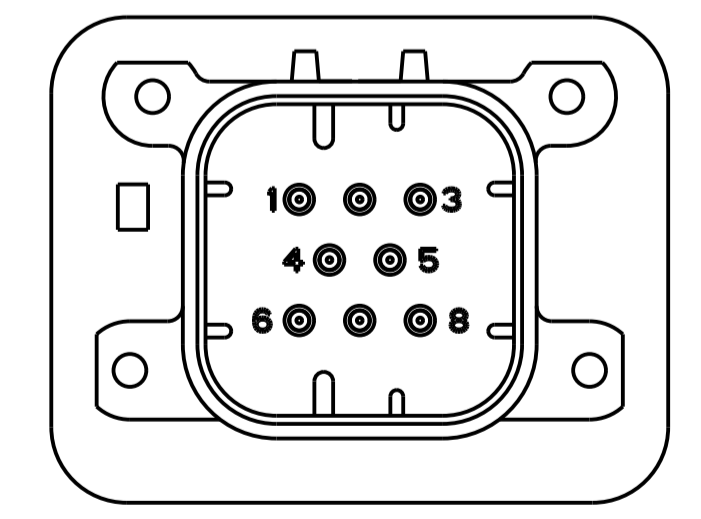
SECTION A-A
 OPTIONAL CONSTRUCTION IF PANEL
 THICKNESS IS GREATER THAN 2.0



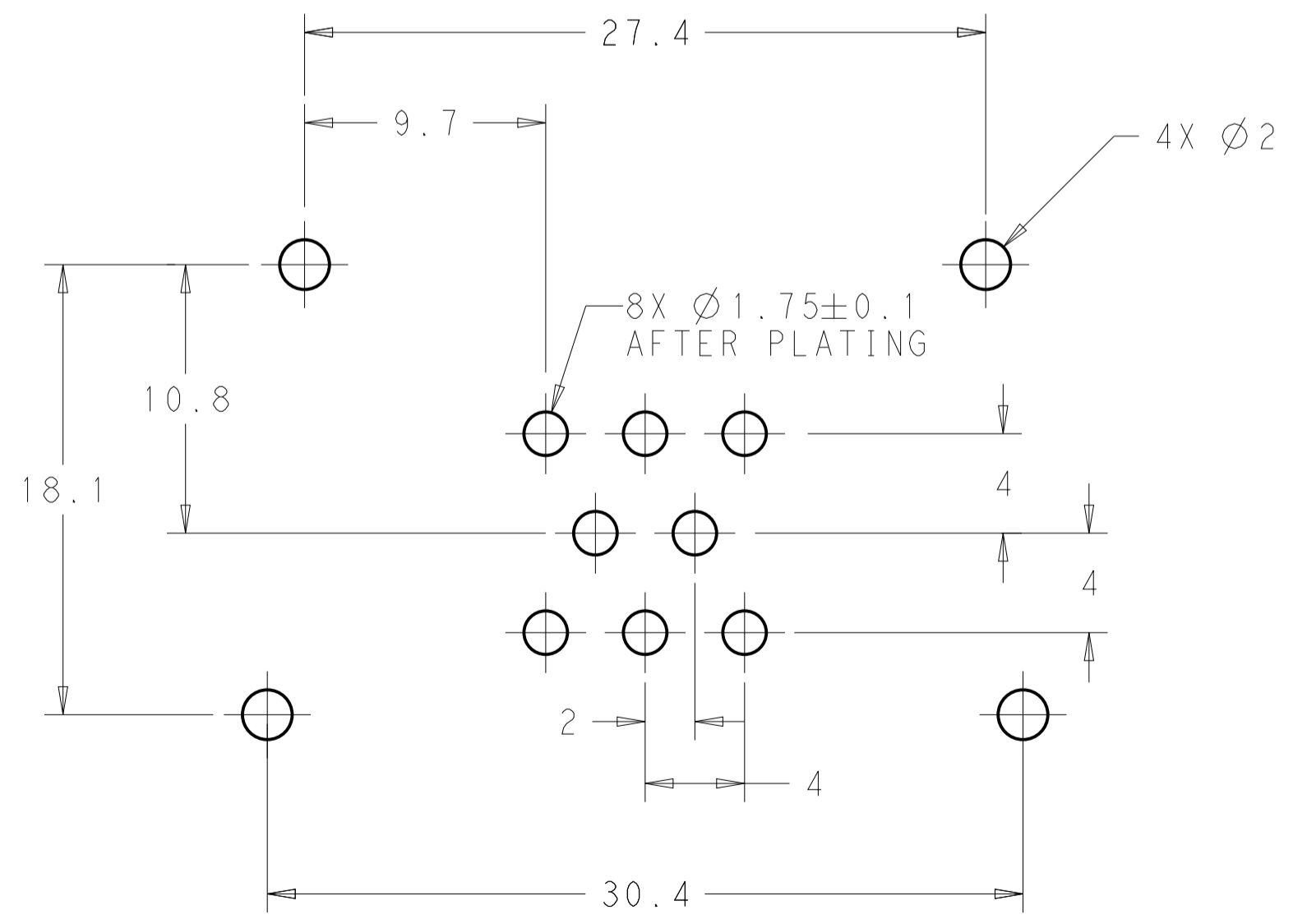
SCALE 2:1
 MOUNTING SCREW (4)
 TORQUE TO 0.6N-m TO 0.8N-m



SCALE 2:1
 ENSURE THE HEADER IS FLUSH
 TO THE PANEL FACE ALL AROUND
 BEFORE TIGHTENING TO FINAL TORQUE



776275-2 & 1-776275-2
 KEY LOCATION
 SCALE 2:1



RECOMMENDED P.C. BOARD LAYOUT
 FOR 1.57 THICK P.C. BOARD

THIS DRAWING IS A CONTROLLED DOCUMENT.		OWN: D. STRAUSSER 29 JAN 2010	TE Connectivity
DIMENSIONS: mm		CHK: D. STRAUSSER 22 MAR 2010	
TOLERANCES UNLESS OTHERWISE SPECIFIED:		APVD: D. STRAUSSER 27 APR 2010	NAME: HEADER ASSEMBLY, 8 POSITION, VERTICAL, AMPSEAL
0 PLC	±0.2	PRODUCT SPEC	SIZE: CAGE CODE DRAWING NO
1 PLC	±0.13	108-1329	RESTRICTED TO
2 PLC	±0.13	APPLICATION SPEC	A100779C=776275
3 PLC	±0.13	114-16016	SCALE 4:1 SHEET 2 OF 2 REV B11
4 PLC	±0.13	WEIGHT 22.48g	
ANGLES	±1°	CUSTOMER DRAWING	