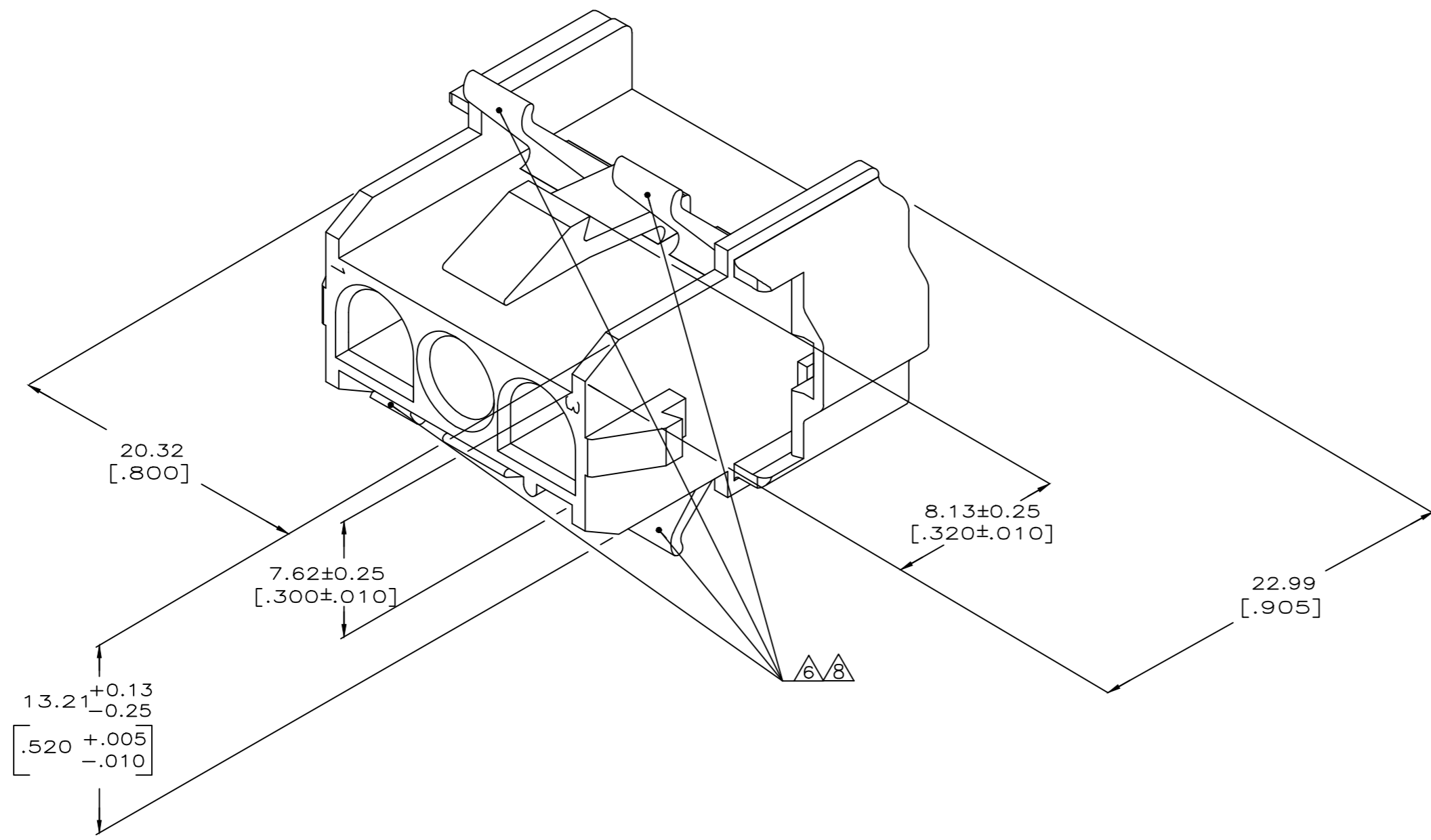
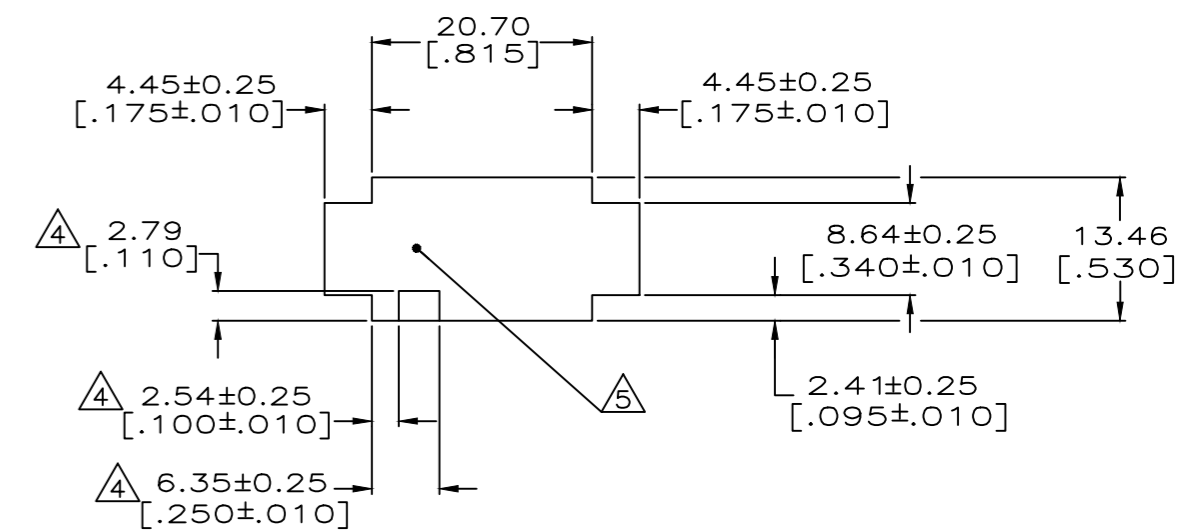


REVISIONS				
P	LTR	DESCRIPTION	DATE	APVD
G2		REV. ECO 17-011267	04SEP2017	HC KR



- 1. MUST BE ASSEMBLED WITH CAP REAR P/N 770048-1 BEFORE MATING. KIT P/N IS 770025-1.
- 2. RECOMMENDED PANEL THICKNESS 0.76-2.29 [.030-.090].
- 3. PANEL MUST BE PUNCHED SO THAT THE HOUSING ENTERS THE PANEL IN THE SAME DIRECTION AS THE PUNCH.
- 4. OPTIONAL FOR KEYING HOUSING IN PANEL.
- 5. CIRCUIT NUMBER 1 LOCATION.
- 6. AMP LOGO LOCATED ONCE ON ANY INDICATED SURFACE FARSIDE.
- 7. DIMENSIONS SHOWN REPRESENT PRODUCT IN DRY, AS MOLDED, CONDITION. ADDITIONAL 2% GROWTH DUE TO SUBSEQUENT MOISTURE ABSORPTION MAY OCCUR AND SHOULD BE ACCOUNTED FOR.
- 8. CSA LOGO LOCATED ONCE ON ANY INDICATED SURFACE.



RECOMMENDED PANEL CUTOUT (HOUSING ENTRY SIDE) SCALE 2:1

770047-1 PART NUMBER



THIS DRAWING IS A CONTROLLED DOCUMENT.		DWG: K. SALMON 1-15-92	TE Connectivity	
DIMENSIONS: INCHES		CHK: R. SWING 1-15-92	NAME: CAP FRONT, 3 CIRCUIT, UNIVERSAL MATE-N-LOK	
TOLERANCES UNLESS OTHERWISE SPECIFIED:		APVD: -	PRODUCT SPEC: -	
0 PLC	± .005	APPLICATION SPEC: -		
1 PLC	± .005	SIZE: A1		
2 PLC	± .005	CAGE CODE: 00779		
3 PLC	± 0.13 [.005]	DRAWING NO: 770047		
4 PLC	± .005	RESTRICTED TO: -		
ANGLES	± .005	SCALE: 5:1		
MATERIAL: NYLONUL94V-0	FINISH: -	WEIGHT: 0.000000	SHEET 1 OF 1	
CUSTOMER DRAWING		REV: G2		