

PART NUMBER	REV	FIRST USED
565505-2	V	1-471273-3

TERMINAL NAME: **A**
 MARK III .250 FLAG FASTON

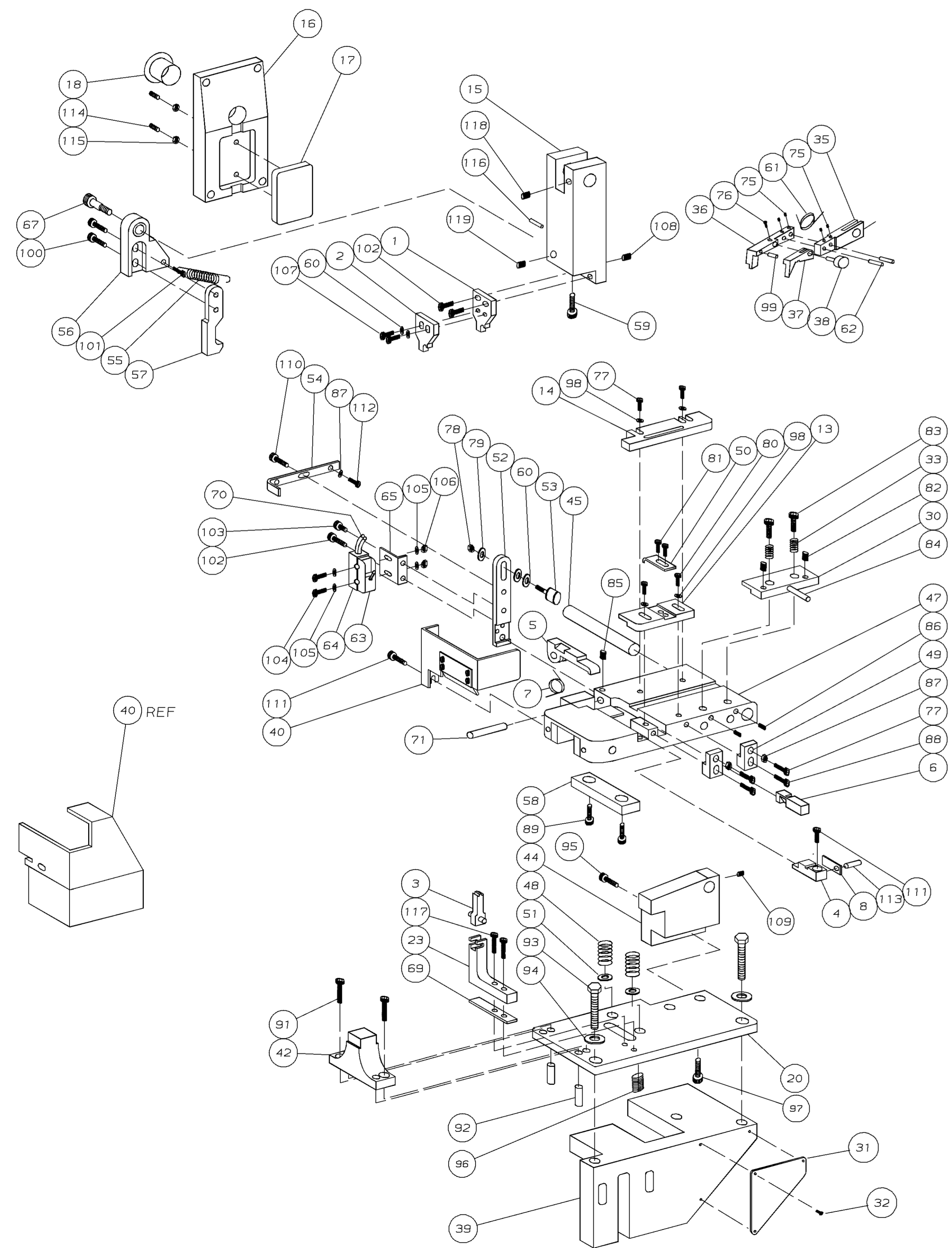
42563	
60851	

TERM APPL SPEC 114-2078

CRIMPING DATA			
CRIMP HEIGHT	WIRE SIZE		
.089	10		
.075	12		
CRIMP	SIZE	TYPE	RANGE
WIRE	.200	TAB LOK	12-10
INSUL	.220	0	-
FEED	APPL INST	SET UP GAGE	LAYOUT
.770	408-8011	-	-
WIRE STRIP LENGTH		-	

QTY	REV	DESCRIPTION	ITEM NO
-	-	-	73
1	-	A 465702-1 DOWEL PIN	72
1	-	C 465918-1 LEAD WIRE	70
1	-	A 811223-1 SPACER, ANVIL HOLDER	69
-	-	-	68
1	-	A 810413 HOOK HOLDER SCREW	67
1	-	A 22787-2 CONNECTOR	66
1	-	B 811074-1 BRACKET, MICRO SWITCH	65
1	-	A 22689-2 COVER, MICROSWITCH	64
1	-	A 23496-1 MICRO SWITCH	63
2	-	A 1-21030-5 DOWEL PIN	62
1	-	A 810421-1 SPRING, FEED FINGER	61
4	-	A 376482 WASHER	60
1	-	A 810642-1 DEPRESSOR SCREW	59
1	-	A 811009-1 HOLD DOWN, HINGE BAR	58
1	-	B 810416 HOOK, SHEAR PICK-UP	57
1	-	A 810419 SHEAR RETURN HOLDER	56
1	-	A 810408 SPRING, CAM FOLLOWER	55
1	-	A 810418 BRACKET, SPRING	54
1	-	A 24746-1 CAM FOLLOWER	53
1	-	C 810409 HOLDER, CAM FOLLOWER	52
2	-	A 811070-1 SPACER, COMPRESSION SPRING	51
1	-	A 810411 STRIP HOLD DOWN	50
2	-	B 810417 STRIP GUIDE STOP	49
2	-	A 3-23846-5 HINGE BAR SPRING	48
1	-	D 565062-1 HINGE BAR ASSY	47
-	-	-	46
1	-	A 811007-1 HINGE PIN	45
1	-	B 810974-1 HINGE BLOCK & STABILIZER	44
-	-	-	43
1	-	A 811006-1 FRONT STABILIZING BAR	42
-	-	-	41
1	-	D 457698-4 GUARD ASSY	40
1	-	C 570238 BASE CASTING	39
1	-	A 810414-1 STUD, FEED FINGER	38
1	-	B 810420 TIP, FEED FINGER	37
1	-	B 810422 FEED FINGER	36
1	-	A 810131 HOLDER, FEED FINGER	35
-	-	-	34
2	-	A 810135 SPRING, STOCK DRAG	33
3	-	C 21017-6 SCR, DRIVE 4-40 x .25	32
1	-	A 452373-1 PLATE, IDENTIFICATION	31
1	-	B 811063-1 STOCK DRAG	30
-	-	-	29
-	-	-	28
-	-	-	27
-	-	-	26
-	-	-	25
-	-	-	24
1	-	A 810548-1 HOLDER, ANVIL	23
-	-	-	22
-	-	-	21
1	-	C 465238-1 BASE PLATE	20
-	-	-	19
1	-	A 23141-1 PROTECTIVE PLUG	18
1	-	A 811010-1 ADJUSTMENT PLATE	17
1	-	D 465004-2 RETAINING PLATE, RAM	16
1	-	B 473828 RAM	15
1	-	B 388621-1 STRIP GUIDE, REAR	14
1	-	C 811052-1 STRIP GUIDE, FRONT	13
-	-	-	12
-	-	-	11
-	-	-	10
-	-	-	9
1	-	B 388632-2 PLATE, FRONT SHEAR	8
1	-	A 810410-1 SPRING, SHEAR BLADE	7
1	-	A 811067-1 PLATE, REAR SHEAR	6
1	-	C 810412 BLADE, SHEAR	5
1	-	A 811047-1 INSERT, ANVIL	4
1	-	A 810550-1 ANVIL	3
1	-	C 472123 CRIMPER, INSULATION	2
1	-	B 465606-1 CRIMPER, WIRE	1

- 1 RECOMMENDED SPARE PARTS.
- 2 ITEMS NOT SHOWN.
- 3 END WIRE APPLICATION



QTY	REV	DESCRIPTION	ITEM NO
-	-	-	129
-	-	-	128
-	-	-	127
-	-	-	126
-	-	-	125
-	-	-	124
-	-	-	123
-	-	-	122
-	-	-	121
-	-	-	120
1	-	A 5-21008-2 SCR, SOC SET, 10-32 X .38	119
1	-	A 21013-4 SCR, SOC SET, 5/L, 1/4-20 X .38	118
2	-	A 3-21000-6 SCR, SHC, 10-32 X .62	117
1	-	A 5-21028-5 PIN, SLT SPG Ø.125 X .75	116
2	-	A 21020-7 NUT, HEX, 1/4-28	115
2	-	A 7-21007-7 SCR, SOC SET, 1/4-28 X 1.00	114
1	-	A 9-21028-0 PIN, ROLL, Ø.125 X .25	113
1	-	A 3-21000-0 SCR, SHC, 8-32 X .88	112
2	-	A 3-21000-5 SCR, SHC, 10-32 X .50	111
1	-	A 2-21000-5 SCR, SHC, 8-32 X .25	110
1	-	A 4-21008-0 SCR, SOC SET, 8-32 X .25	109
1	-	A 21007-4 SCR, SOC SET, 1/4-20 X .38	108
2	-	A 3-21000-1 SCR, SHC, 10-32 X .38	107
2	-	A 21068-5 NUT, HEX, 6-32	106
4	-	A 21108-5 WASHER, FLAT, #6	105
2	-	A 7-21000-3 SCR, SHC, 6-32 X 1.25	104
1	-	A 9-21001-0 SCR, SHC, 1/4-20 X .25	103
3	-	A 21001-2 SCR, SHC, 1/4-20 X .50	102
1	-	A 2-21002-1 SCR, SBHC, 8-32 X .38	101
2	-	A 7-21000-6 SCR, SHC, 10-32 X .31	100
1	-	A 21028-6 PIN, ROLL, Ø.062 X .50	99
2	-	- 21108-6 WASHER, FLAT, #8	98
3	-	A 1-21001-7 SCR, SHC, 5/16-18 X .62	97
2	-	A 4-21007-7 SCR, SOC SET, 1/4-13 X 1.00	96
2	-	A 21001-5 SCR, SHC, 1/4-20 X .88	95
2	-	A 371178 WASHER, FLAT, 3/8	94
2	-	A 3-21015-2 SCR, HEX HD, 3/16-16 X 1.25	93
2	-	A 4-21029-7 PIN, ROLL, Ø.250 X 1.00	92
2	-	A 1-21001-8 SCR, SHC, 5/16-18 X .75	91
-	-	-	90
2	-	A 2-21015-9 SCR, HEX HD, 3/8-16 X .75	89
2	-	A 2-21000-6 SCR, SHC, 8-32 X .38	88
3	-	A 21068-6 NUT, HEX, #8	87
2	-	A 5-21006-0 SCR, SOC SET, 10-32 X .25	86
2	-	A 4-21008-0 SCR, SOC SET, 5/L, 8-32 X .25	85
1	-	A 1-21029-7 PIN, ROLL, Ø.187 X 2.00	84
2	-	A 21001-4 SCR, SHC, 1/4-20 X .75	83
2	-	A 4-21008-2 SCR, SOC SET, 5/L, 8-32 X .38	82
2	-	A 1-21000-8 SCR, SHC, 6-32 X .25	81
2	-	A 2-21003-3 SCR, FSHC, 8-32 X .38	80
1	-	A 21108-7 WASHER, FLAT, #10	79
1	-	A 21068-7 NUT, HEX, #10	78
4	-	A 2-210007 SCR, SHC, 8-32 X .50	77
1	-	A 3-21006-9 SCR, SOC SET, 8-32 X .19	76
4	-	A 4-21006-0 SCR, SOC SET, 8-32 X .25	75
-	-	-	74

QTY	REV	DESCRIPTION	ITEM NO
-2	U/M	DWG SIZE	
REVISION OF EACH ASSY NO (WHEN BLANK, USE DWG REVISION)			
PARTS LIST			
V	0150-6067-95	CE	4-95
U	0150-5229-94	CE	2-94
T	0150-4986-93	CE	11-93
P/F	LTR	REVISION RECORD	APP

QTY	REV	DESCRIPTION	ITEM NO
-2	U/M	DWG SIZE	
REVISION OF EACH ASSY NO (WHEN BLANK, USE DWG REVISION)			
PARTS LIST			
DIMENSIONS IN INCHES. DO NOT SCALE PRINT. TOLERANCES UNLESS OTHERWISE SPECIFIED.			
3 PLC DEC ±			
2 PLC DEC ±			
1 PLC DEC ±			
0 PLC DEC ±			
ANGLES ±			
SURF TEXTURE: ✓			
REMOVE BURRS, BREAK SHARP EDGES R.015 MAX			
MATERIAL		FIN	
HT TR		-	
DR 5/17/93 APP 11-24-93		B WOLFE	
W. SOURBEER/UTA		REL 1/10/94	
CHK 11-24-93		C ERISMAN	
NAME HINGEBAR STANDARD APPLICATOR		MACHINE REF STD APPL	
SCALE 1:4		DWG NO 565505-2	
SHEET 1 OF 1		REV V	

THIS DRAWING IS A CONTROLLED DOCUMENT FOR AMP INCORPORATED. IT IS SUBJECT TO CHANGE AND THE CONTROLLING ENGINEERING ORGANIZATION SHOULD BE CONTACTED FOR THE LATEST REVISION.

THIS INFORMATION IS CONFIDENTIAL AND IS DISCLOSED TO YOU ON CONDITION THAT NO FURTHER DISCLOSURE IS MADE BY YOU TO OTHER THAN AMP PERSONNEL WITHOUT WRITTEN AUTHORIZATION FROM AMP INCORPORATED, HARRISBURG, PA.

LOC A
DIST 4