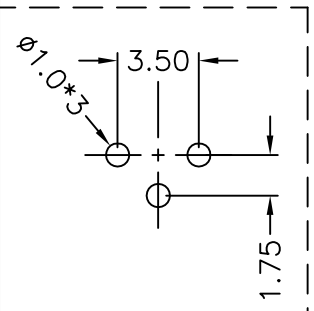
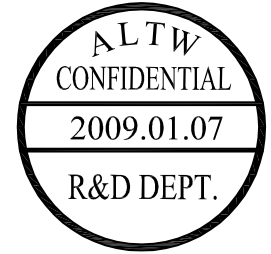
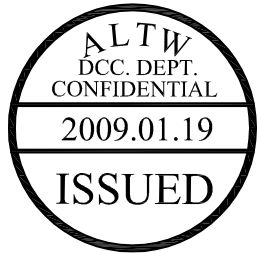
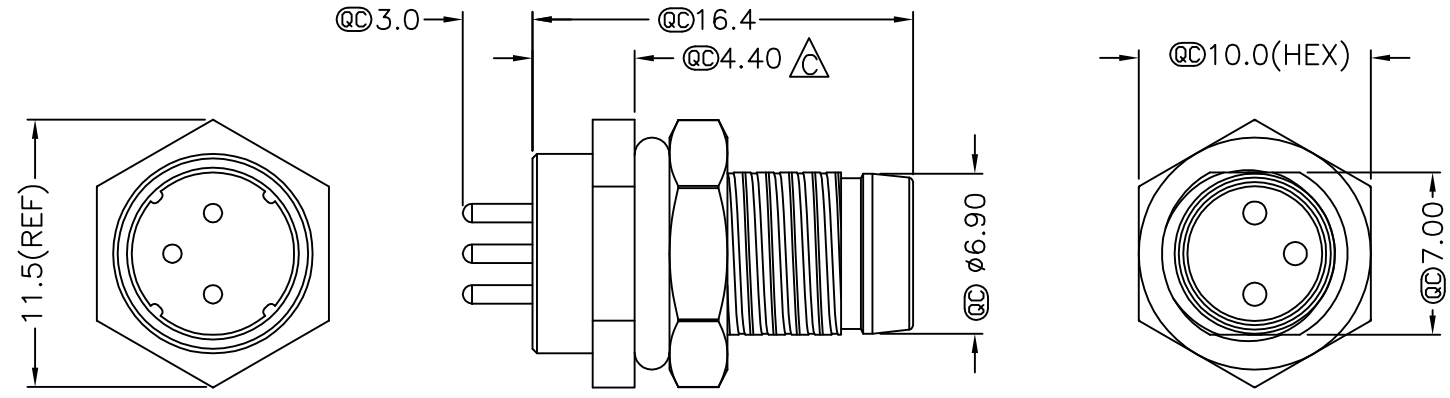
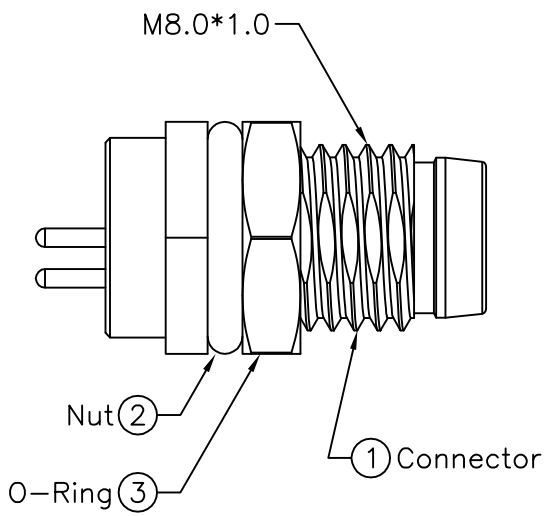


| 5 | 6 | 7 | 8 |
|------|------------|------------|-------------------------|
| REV. | ECN NO. | DATE | DESCRIPTION |
| B | LEN-7A0180 | 2007/09/29 | Myrdal |
| C | LEN-910179 | 2009/01/07 | Ivan Lin |
| | | | Added Note |
| | | | Change rev. to ECN note |

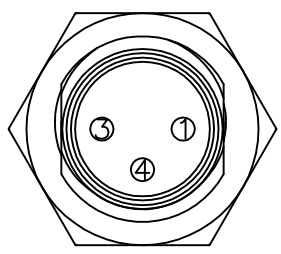
THIS DOCUMENT IS SUBJECT TO CHANGE WITHOUT NOTICE. IT IS CONFIDENTIAL AND A PROPERTY OF Amphenol LTW. DISCLOSURE TO THIRD PARTY HAS TO BE AUTHORIZED BY Amphenol LTW.



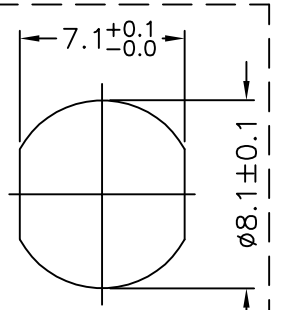
3 Pin Male Connector
Male Pin PCB Layout



- Note:
- * @C Important Dimension.
 - * Waterproof Rate: IP67
 - * Housing: Black, Nylon+GF
 - * Male Pin: Copper Alloy, Gold Plated
 - * Shield: Zinc Alloy, Nickel Plated
 - * Nut: Copper Alloy, Nickel Plated
 - * O-Ring: Black, EPDM
 - * For Panel Thickness Max 3.0mm
 - * Nut Torque: 4-6 kgf.cm



Pin Assignments
Front View



Recommended
Panel Cut-Out

| | |
|-----------|-------|
| UNIT:mm | |
| TOLERANCE | |
| .X | ±0.25 |
| .XX | ±0.1 |
| .XXX | ±0.05 |
| ANGLES | ±1° |

| | | |
|--------|--|---------------------|
| TITLE | M8 Conn Panel Screw 3P M Conn M Pin | |
| SCALE | Free | SHEET 1 OF 1 |
| REV. C | SIZE A4 | @C :Inspection Item |

Amphenol LTW
安費諾亮泰企業股份有限公司

| | |
|----------|-----------------|
| ITEM NO | 8-03PMMP-SF7002 |
| DWG NO | 8-03PMMP-SF7002 |
| CUSTOMER | ALTW |

| | |
|-------------|------------|
| DRAWN BY | Ivan Lin |
| CHECKED BY | Tommy Hom |
| APPROVED BY | Luke Chang |

| | |
|------|------------|
| DATE | 2009/01/07 |
| DATE | 2009/01/07 |
| DATE | 2009/01/07 |