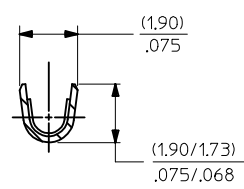
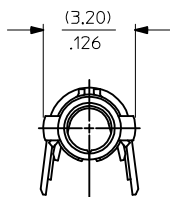
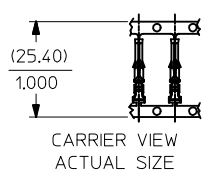
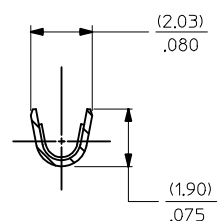


PART NO. ENG. NO.

02-06-1131	1855-(P901)
02-06-1132	1855-(P901)L
02-06-5138	1855-(P561)
02-06-5139	1855-(P561)L
02-06-5130	1855-(P550)
02-06-5135	1855-(P550)L
02-06-5147	1855-(P228)
02-06-5148	1855-(P228)L
02-06-1141	1855-1(P901)
NOT TOOLED	1855-1(P901)L
02-06-1143	1855-(P9011)



SECT. "B-B"
SCALE:10X



SECT. "C-C"
SCALE:10X

LEGEND

1855-*(****)*

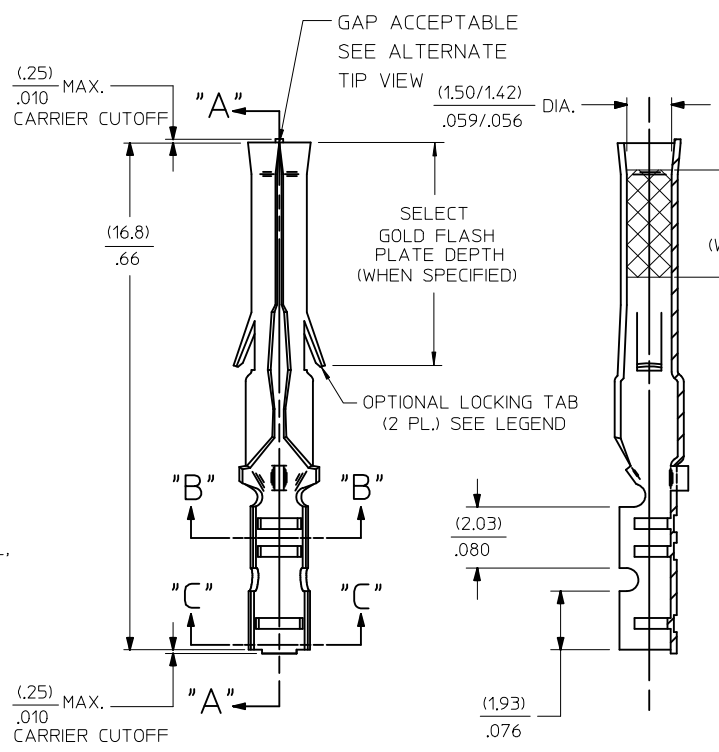
BLANK=WITH LOCKING TABS
1=WITHOUT LOCKING TABS

P=PREPLATE
BLANK=POSTPLATE

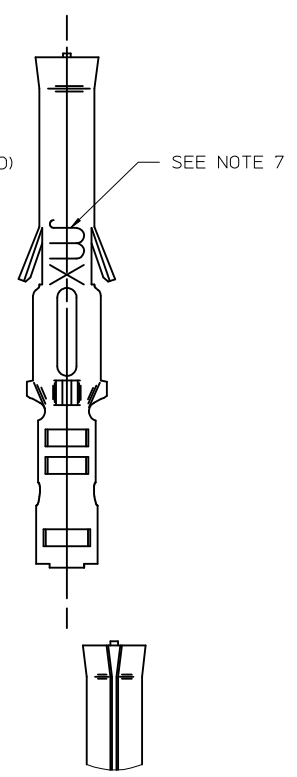
FORM
BLANK=CHAIN
1=CHAIN WITH INTERLEAF
PAPER ON REEL.
L=LOOSE
FINISH CODE

NOTES:

- MATERIAL: BRASS
- FINISHES:
 - 901 HOT TIN DIP (.00051)/.000020 MIN.
 - 228 SELECT GOLD PLATE (.00075)/.000030 MIN. IN CONTACT AREA, SELECT TIN (.00250)/.000100 MIN. IN CRIMP AREA OVER (.00125)/.000050 MIN. NICKEL OVERALL, WITH .000010/(0.00025) MAX. SELECT GOLD FLASH IN AREA INDICATED.
 - 561 SELECT GOLD PLATE (.00076)/.000030 MIN. IN CONTACT AREA, (.00127)/.000050 MIN. NICKEL OVERALL.
 - 550 SELECT GOLD PLATE (.00038)/.000015 MIN. IN CONTACT AREA, OVER (.00076)/.000030 MIN. NICKEL OVERALL WITH (.00025)/.000010 MAX. GOLD FLASH OVERALL.
- PRODUCT SPECIFICATION: PS-02-06
- PACKAGE INFORMATION: LOOSE TERMINALS: PK-1190-003
CHAIN TERMINALS: NOT AVAILABLE
- TERMINAL FOR USE WITH (1.57)/.062 DIA. SERIES HOUSINGS AND WILL ACCEPT 24 THRU 30 AWG WIRE WITH (1.02/2.29)/.040/.090 INSULATION DIAMETER.
- PARTS CONFORM TO CLASS B REQUIREMENTS OF COSMETIC SPECIFICATION PS-45499-002.
- MARKING MAY VARY ON PARTS. CONSULT FACTORY.
- TIP GEOMETRY IS TOOL DEPENDENT. EITHER GEOMETRY IS ACCEPTABLE.



SECT. "A-A"



ALTERNATE TIP GEOMETRY
SEE NOTE 8

ADD ALT. TIP VIEW EC NO: UCP2018-0621 DR: NAZAROVIC 2017/11/15 CHKD: APPR: F. SMITH 2018/06/01	QUALITY SYMBOLS	GENERAL TOLERANCES (UNLESS SPECIFIED)		DIMENSION STYLE IN/MM		SCALE	DESIGN UNITS INCH	THIRD ANGLE PROJECTION	
	▽=0	4 PLACES ±	mm	INCH	DRAWN BY GEP	DATE 1987/09/17	TITLE CRIMP TERMINAL, FEMALE (1.57)/.062 DIA., BRASS FOR 24 THRU 30 GA. WIRE molex		
	▽=0	3 PLACES ±	±.10	±.010	CHECKED BY RW	DATE 1987/09/17			
	▽=0	2 PLACES ±	±0.25	±.014	APPROVED BY RAS	DATE 1987/09/17	DOCUMENT NO. SD-1855-*		SHEET NO. 1 OF 1
AP2	0 PLACE ±	±	±	MATERIAL NO. SEE CHART		DRAFT WHERE APPLICABLE MUST REMAIN WITHIN DIMENSIONS			