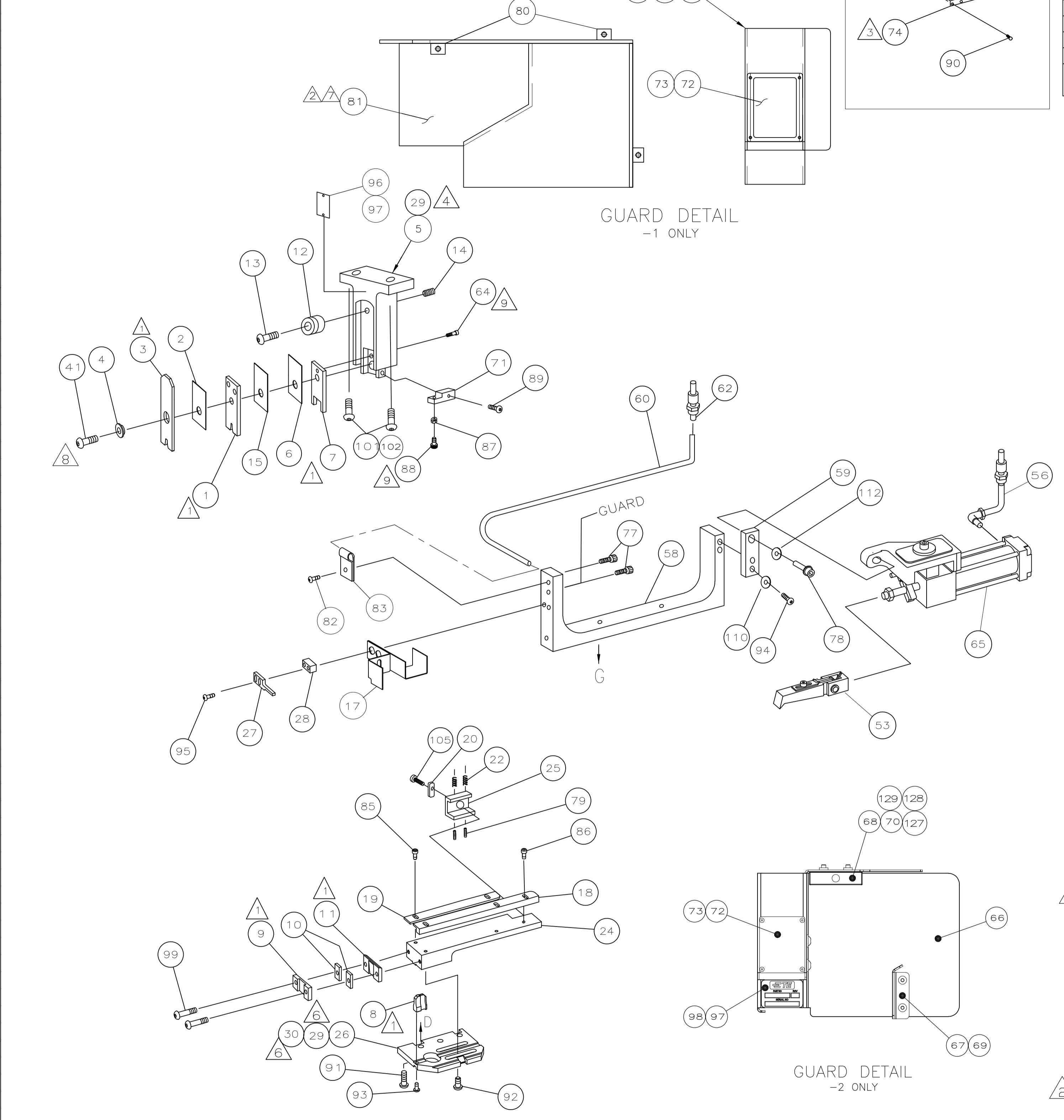


| PART NUMBER | REV | FIRST USED | MACHINE REFERENCE | FEED TYPE |
|-------------|-----|------------|------------------------|-----------|
| 566411-1 | D | 356462-2 | G-SPLICE TERM | AIR FEED |
| 566411-2 | G | 2161300-1 | 5K CE&GII THRU SPLICE | AIR FEED |
| 7-566411-7 | D | 356462-2 | SPARE PARTS KIT | - |
| 7-566411-8 | G | - | CONV. KIT FOR -1 TO -2 | - |

| TERMINAL NAME: .187 AMPLIVAR FASTON™ FLAG RECEPT | | 63942 | | CRIMPING DATA | |
|--|---------------------------|---------------|----------------------------------|---------------|--------|
| PAD LTR | CRIMP HEIGHT | WIRE SIZE | | | |
| 2 | .046 ±.002 [1.15 ±0.05mm] | 1100-1200 cma | | | |
| 2 | .044 ±.002 [1.12 ±0.05mm] | 767-960 CMA | | | |
| 2 | .042 ±.002 [1.09 ±0.05mm] | 500-650 CMA | | | |
| 3 | - | - | | | |
| CRIMP | SIZE | TYPE | RANGE | | |
| WIRE | .070 [1.78mm] | F | 500-1200 CMA | | |
| INSUL | .070 [1.78mm] | 0 | .020-.040 | | |
| WIRE STRIP LENGTH | TERM APPL SPEC | FEED | APPL INSTRUCTION | SET UP GAGE | LAYOUT |
| - | 114-2152 | .570 | 408-8318 (-1) 408-127000 (-2) | 458638-1 | L1810 |

| LOC | DIST | REVISIONS | | | | | |
|-----|------|-----------|---------------|-------------|-----------|-----|------|
| A | 66 | F | LTR | DESCRIPTION | DATE | DWN | APVD |
| | | G | ECR-15-018000 | | 11DEC2015 | LG | TE |



| QTY | REQD | PER | ASSY | PART NO | DESCRIPTION | ITEM NO |
|-----|------|-----|------|------------|-------------------------------|---------|
| 2 | - | 2 | - | 18029-2 | M4 HEX NUT | 129 |
| 2 | - | 2 | - | 18025-2 | M4 LOCK WASHER | 128 |
| 2 | - | 2 | - | 18027-2 | M4 FLAT WASHER | 127 |
| 1 | - | 1 | - | 408-32162 | THRU SPLICE IS SHEET-GII | 126 |
| - | - | 1 | - | 408-127000 | THRU SPLICE IS SHEET | 125 |
| - | - | 1 | 1 | 217238-1 | GENERAL INSTRUCTION PACKAGE | 124 |
| - | - | - | 1 | 408-8318 | THRU SPLICE IS SHEET | 123 |
| - | - | - | - | - | - | 122 |
| - | - | - | - | - | - | 121 |
| - | - | - | - | - | - | 120 |
| - | - | - | - | - | - | 119 |
| - | - | - | - | - | - | 118 |
| - | - | - | - | - | - | 117 |
| - | - | - | - | - | - | 116 |
| - | - | - | - | - | - | 115 |
| - | - | - | - | - | - | 114 |
| - | - | 1 | 1 | 21024-8 | LOCK WASHER | 113 |
| - | - | - | - | - | - | 112 |
| - | - | - | - | - | - | 111 |
| - | - | 2 | 2 | 21024-5 | WASHER,LOCK(#10)ST GUIDE | 110 |
| - | - | - | - | - | - | 109 |
| - | - | - | - | - | - | 108 |
| - | - | - | - | - | - | 107 |
| - | - | - | - | - | - | 106 |
| - | - | 1 | 1 | 22353-8 | SCR,SHLD(Ø.187x.25)DRAG LEVER | 105 |
| - | - | - | - | - | - | 104 |
| - | - | - | - | - | - | 103 |
| 2 | - | 2 | - | 3-18023-3 | SCR SHC (M6X50) | 102 |
| - | - | 2 | - | 3-18023-0 | SCR SHC (M6X25) | 101 |
| - | - | 2 | 2 | 21017-2 | SCR,DRIVE(#2x.19)ID PLATE | 100 |
| - | - | 2 | 2 | 3-21002-0 | SCR,BHC(10-32x.88)DRAG | 99 |
| - | - | 1 | 1 | 819347-1 | PLATE, IDENTIFICATION | 98 |
| - | - | AR | AR | 25527-3 | TAPE | 97 |
| - | - | 1 | 1 | 690701-2 | PLATE ID | 96 |
| - | - | 2 | 2 | 2-21002-4 | SCR,SHC(8-32x.50)STRIPPER | 95 |
| - | - | 2 | 2 | 3-21000-5 | SCR,SHC(10-32x.50)CAP | 94 |
| - | - | 1 | 1 | 22733-8 | SCR,BHC(8-32x.38 LW)ANVIL | 93 |
| - | - | 4 | 4 | 3-21002-3 | SCR,BHC(1/4-20x.50)ST GD PL | 92 |
| - | - | 3 | 3 | 2-22733-8 | SCR,BHC(1/4-20x.62)HSG | 91 |
| - | - | 2 | 2 | 2-21002-0 | SCR,BHC(8-32x.38)GUARD | 90 |
| - | - | 1 | 1 | 1-21000-8 | SCR SHC (6-32 x.38) | 89 |
| - | - | 1 | 1 | 811242-2 | HOLD DOWN BUMPER | 88 |
| - | - | 1 | 1 | 21018-5 | NUT, HEX 6-32 | 87 |
| - | - | 3 | 3 | 1-21002-7 | SCR,BHC(6-32x.38)STRIP GUIDE | 86 |
| - | - | 2 | 2 | 1-21002-6 | SCR,BHC(6-32x.25)STRIP GUIDE | 85 |
| - | - | - | - | - | - | 84 |
| - | - | 1 | 1 | 986220-9 | CABLE CLAMP | 83 |
| - | - | 1 | 1 | 2-21002-6 | SCR,BHC(10-32x.38)CLAMP | 82 |
| - | - | - | - | - | - | 81 |
| - | - | - | - | - | - | 80 |
| - | - | 2 | 2 | 5-21006-6 | SCR,SET(10-32x.75) | 79 |
| - | - | 1 | 1 | 3-21001-3 | SCR, CAP 3/8-16UNC x .88 | 78 |
| - | - | 2 | 2 | 2-21002-5 | SCR,BHC(10-32x.25)GUARD | 77 |
| - | - | - | - | - | - | 76 |
| - | - | REF | REF | 1490705-1 | KIT, WIRE SHELF | 75 |
| - | - | - | - | - | - | 74 |
| - | - | 4 | 4 | 1-21000-0 | SCR,SHC(2-56x.25)GUARD WINDOW | 73 |
| - | - | 1 | 1 | 1338174-1 | WINDOW, GUARD | 72 |
| - | - | 1 | 1 | 1338213-1 | BRACKET, HOLDDOWN | 71 |
| -78 | -77 | -2 | -1 | PART NO | DESCRIPTION | ITEM NO |

| QTY | REQD | PER | ASSY | PART NO | DESCRIPTION | ITEM NO |
|-----|------|-------|-------|------------|-----------------------------|---------|
| 2 | - | 2 | - | 1-18023-3 | SCR, SHC, M4X16 | 70 |
| 2 | - | 2 | - | 18024-6 | SCR, BHC, M4X8 | 69 |
| 1 | - | 1 | - | 2168489-1 | ACTUATOR, SPARE MCI | 68 |
| 1 | - | 1 | - | 2161273-1 | GUARD, END FEED INSERT | 67 |
| 1 | - | 1 | - | 2161272-3 | GUARD, END FEED | 66 |
| - | - | 1 | 1 | 2-460277-2 | AIR FEED ASSY (1 INCH) | 65 |
| - | - | 1 | 1 | 1-21000-9 | SCR, SHC (6-32 X .34) | 64 |
| - | - | - | - | - | - | 63 |
| - | - | 1 | 1 | 23238-1 | QUICK DISCONNECT | 62 |
| - | - | - | - | - | - | 61 |
| - | - | 18.00 | 18.00 | 27319-4 | TUBING, POLY-FLO Ø.25 | 60 |
| - | - | 1 | 1 | 1338207-1 | BRACKET, FEED EXTENSION | 59 |
| - | - | 1 | 1 | 1338208-1 | BRACKET, FEED | 58 |
| - | - | - | - | - | - | 57 |
| - | - | 1 | 1 | 692655-7 | AIR FEED ASSY | 56 |
| - | - | - | - | - | - | 55 |
| - | - | - | - | - | - | 54 |
| - | - | 1 | 1 | 2-460680-0 | FEED FINGER ASSY | 53 |
| - | - | - | - | - | - | 52 |
| - | - | - | - | - | - | 51 |
| - | - | - | - | - | - | 50 |
| - | - | - | - | - | - | 49 |
| - | - | - | - | - | - | 48 |
| - | - | - | - | - | - | 47 |
| - | - | - | - | - | - | 46 |
| - | - | - | - | - | - | 45 |
| - | - | - | - | - | - | 44 |
| - | - | - | - | - | - | 43 |
| - | - | - | - | - | - | 42 |
| - | - | 1 | 1 | 7-21002-9 | BOLT, CRIMPER(5/16-24x1.00) | 41 |
| - | - | - | - | - | - | 40 |
| - | - | - | - | - | - | 39 |
| - | - | - | - | - | - | 38 |
| - | - | - | - | - | - | 37 |
| - | - | - | - | - | - | 36 |
| - | - | - | - | - | - | 35 |
| - | - | - | - | - | - | 34 |
| - | - | - | - | - | - | 33 |
| - | - | - | - | - | - | 32 |
| - | - | - | - | - | - | 31 |
| - | - | 2 | 2 | 18027-4 | WASHER, FLAT M6 | 30 |
| - | - | 2 | 2 | 2-18023-8 | SCR,SHC M6 X 20 | 29 |
| - | - | 1 | 1 | 5-690451-2 | SPACER, STRIPPER | 28 |
| - | - | 1 | 1 | 240639-4 | STRIPPER | 27 |
| - | - | 1 | 1 | 1338398-1 | PLATE, BASE | 26 |
| - | - | 1 | 1 | 240792-7 | DRAG, TERMINAL | 25 |
| - | - | 1 | 1 | 662383-1 | PLATE, STRIP GUIDE | 24 |
| - | - | - | - | - | - | 23 |
| - | - | 2 | 2 | 1-22284-0 | SPRING, DRAG | 22 |
| - | - | - | - | - | - | 21 |
| - | - | 1 | 1 | 240793-1 | LEVER, DRAG RELEASE | 20 |
| - | - | 1 | 1 | 662388-1 | GUIDE, STRIP (REAR) | 19 |
| - | - | 1 | 1 | 662387-1 | GUIDE, STRIP (FRONT) | 18 |
| - | - | 1 | 1 | 1583984-1 | GUIDE, WIRE | 17 |
| - | - | - | - | - | - | 16 |
| - | - | 1 | 1 | 7-455888-1 | SPACER, CRIMPER | 15 |
| - | - | 1 | 1 | 27058-2 | PLUNGER, SPRING, STUBBY | 14 |
| - | - | 1 | 1 | 21004-9 | SCR, SHLD .31 DIA X .50 LG. | 13 |
| - | - | 1 | 1 | 1338124-1 | WHEEL, ADJUSTING | 12 |
| - | - | 1 | 1 | 240644-5 | PLATE, REAR SHEAR | 11 |
| - | - | 2 | 2 | 1-240645-2 | SPACER, SHEAR PLATE | 10 |
| - | - | 1 | 1 | 318704-1 | PLATE, FRONT SHEAR | 9 |
| - | - | 1 | 1 | 2-456537-4 | ANVIL | 8 |
| - | - | 1 | 1 | 1338209-2 | BLADE, SLUG | 7 |
| - | - | 1 | 1 | 6-455888-1 | SPACER, CRIMPER | 6 |
| - | - | 1 | 1 | 1338212-1 | HOLDER, TOOL ASSEMBLY | 5 |
| - | - | 1 | 1 | 238009-8 | SPACER, BLOCK CRIMPER | 4 |
| - | - | 1 | 1 | 1338211-3 | CRIMPER, INSULATION | 3 |
| - | - | 1 | 1 | 5-455888-8 | SPACER, CRIMPER | 2 |
| - | - | 1 | 1 | 1338210-3 | CRIMPER, MODIFIED | 1 |
| -78 | -77 | -2 | -1 | PART NO | DESCRIPTION | ITEM NO |

- 1 RECOMMENDED SPARE PARTS.
- 2 GUARD MUST BE IN PLACE WHEN OPERATING APPLICATOR IN A BENCH MACHINE.
- 3 SEE DRAWING FOR COMPONENTS
- 4 RECOMMENDED SET UP WIRE FOR TERMINAL 63941. FOR APPLICATOR QUALIFICATION ONLY.
- 5 USE MANUAL PRECISION ADJUSTMENT LEVER ON G TERMINATOR TO ACHIEVE PROPER CRIMP HEIGHT.
- 6 ITEM NOT SHOWN
- 7 ITEM 81 IS ATTACHED TO THE G TERMINATOR GUARD DOOR WITH ITEM 80.
- 8 CRIMPER BOLT MUST BE LOOSENED TO CHANGE CRIMP HEIGHT ADJUSTING WHEEL. BE SURE TO SEAT THE CRIMPER AGAINST THE ADJUSTING WHEEL AND REALIGN THE TOOLING.
- 9 CUT TO LENGTH AT ASSEMBLY.

| WIRE COMBINATION DATA | | |
|-----------------------|------------------|---------------|
| REF PAD_LTR | REF CRIMP HEIGHT | MAG WIRE |
| 2 | .044 | (2) 24 |
| 2 | .042 | (1)25 + (1)26 |

THIS DRAWING IS A CONTROLLED DOCUMENT.

DIMENSIONS: INCHES

TOLERANCES UNLESS OTHERWISE SPECIFIED:

| | |
|--------|--------|
| 0 PL | ± .005 |
| 1 PL | ± .005 |
| 2 PL | ± .005 |
| 3 PL | ± .005 |
| 4 PL | ± .005 |
| ANGLES | ± .005 |

MATERIAL: - FINISH: -

WEIGHT: -

CUSTOMER DRAWING

APPROVED: B. HIGMAN 07/09/01

TE Connectivity
Harrisburg, PA 17105-3608

END FEED PIGTAIL SPLICE W/TRIM

SCALE: - SHEET 1 OF 1 REV G