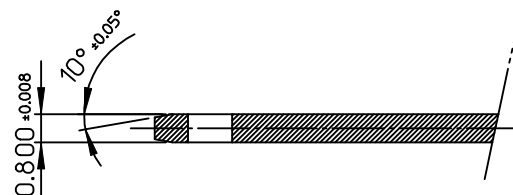
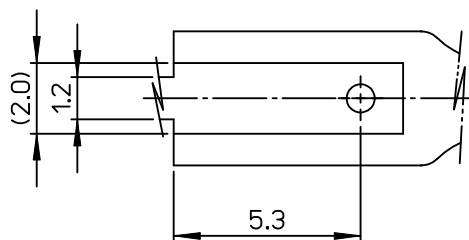


SECTION A-A

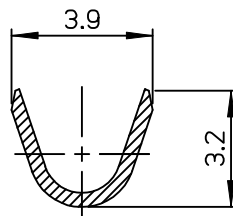


SECTION A-A

MATERIAL : UNPLATED BRASS(C2600T)
HARDNESS : 62+/-7 ROCKWELL 30T SCALE
(VICKERS HARDNESS : HV104-148)



TRADE MARK
(MK1)

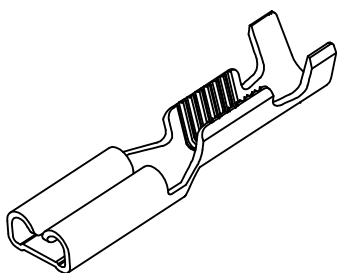


SECTION B-B

NOTES:

1. MATERIALS: PHOSPHOR BRONZE, 1/2 HARD, 0.3mm THICKNESS
2. FINISHES: POST TIN PLATED
(1.0 μm MIN. TIN OVER 0.3 μm MIN. COPPER)
3. PRODUCT SPECIFICATION: PS-49748-001
4. PACKAGING SPECIFICATION: PK-49748-001
5. APPLICABLE MAGNET WIRE RANGE : AWG #25.5 - #19(280 - 1300 CMA)
6. INSULATION WIRE RANGE : TFS-19 ~ 21 TEFLON TUBING
PER THE FOLLING CS-49748-001
7. TEST TAB INSERTION & WITHDRAWAL FORCE
(MEASURED BY PUSH-PULL GAUGE : USED 0.8T UNPLATED TAB)

INSERTION FORCE(Kgf)	WITHDRAWAL FORCE(Kgf)	FINISH
INITIAL	INITIAL	
5.5kgf MAX.	2.5kgf MIN.	TIN PLATED



REVISED	EC NO: KOR2014-0002	2013/07/09	QUALITY SYMBOLS
	DRWN:SKCHO	2013/07/09	
	CHKD:SHCHU	2013/07/09	▽=0
	APPR:YSKIM02	2013/07/17	∇=0
B1	DESCRIPTION		

GENERAL TOLERANCES (UNLESS SPECIFIED)	
mm	INCH
4 PLACES	± --- ± ---
3 PLACES	± --- ± ---
2 PLACES	± 0.30 ± ---
1 PLACE	± 0.30 ± ---
0 PLACE	± --- ± ---
ANGULAR ± 1 °	
DRAFT WHERE APPLICABLE MUST REMAIN WITHIN DIMENSIONS	

DIMENSION STYLE		SCALE	DESIGN UNITS	THIRD ANGLE PROJECTION
MM ONLY		7/1	METRIC	⊙ □
DRAWN BY	DATE	TITLE		
JB. JIN	2004/03/16	.110 REC TERMINAL (MAGNET WIRE)		
CHECKED BY	DATE			
WY. YANG	2004/03/16			
APPROVED BY	DATE	MATERIAL NO.		
CW. LEE	2004/03/16	DOCUMENT NO.		
SIZE		SHEET NO.		
A3		1 OF 1		