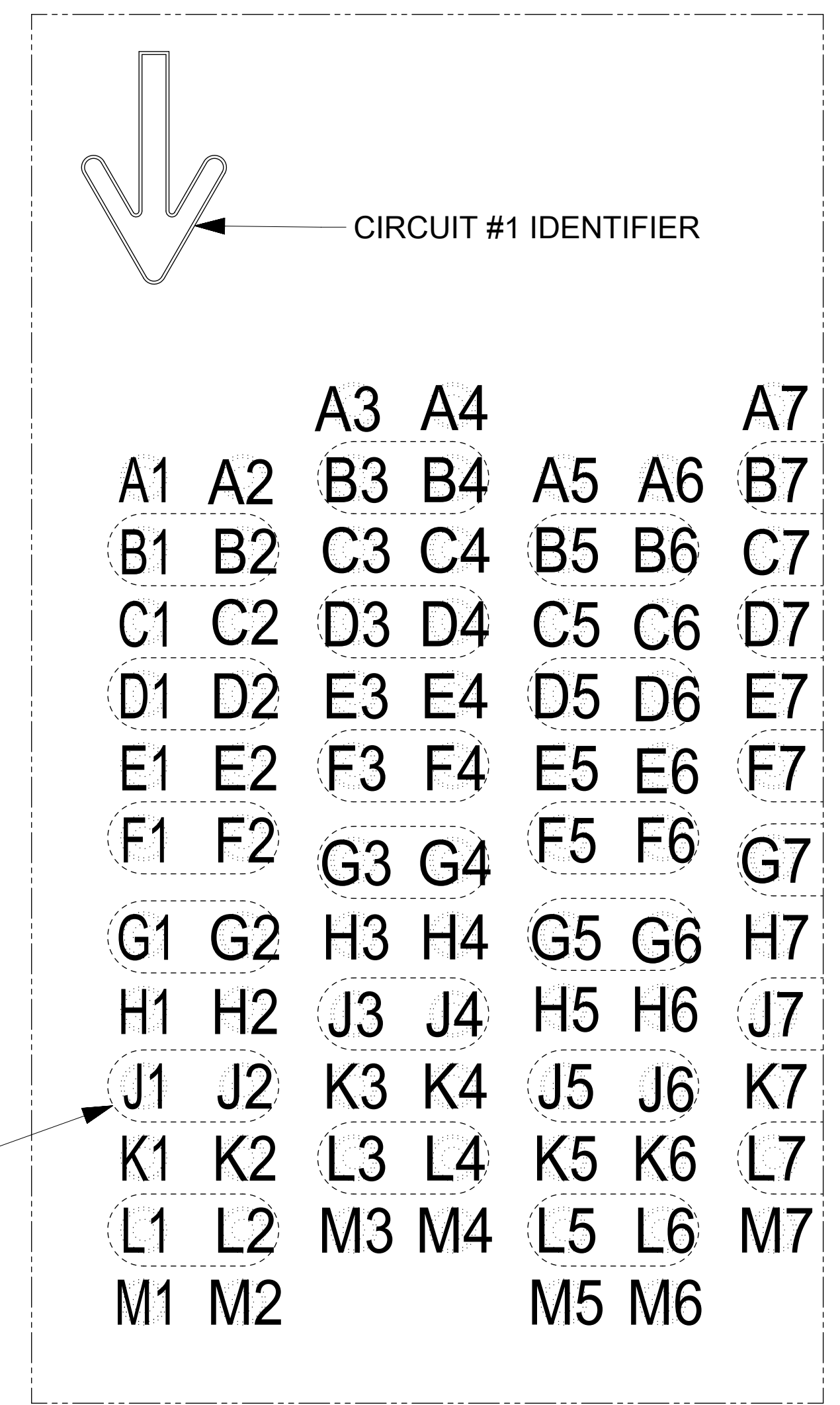
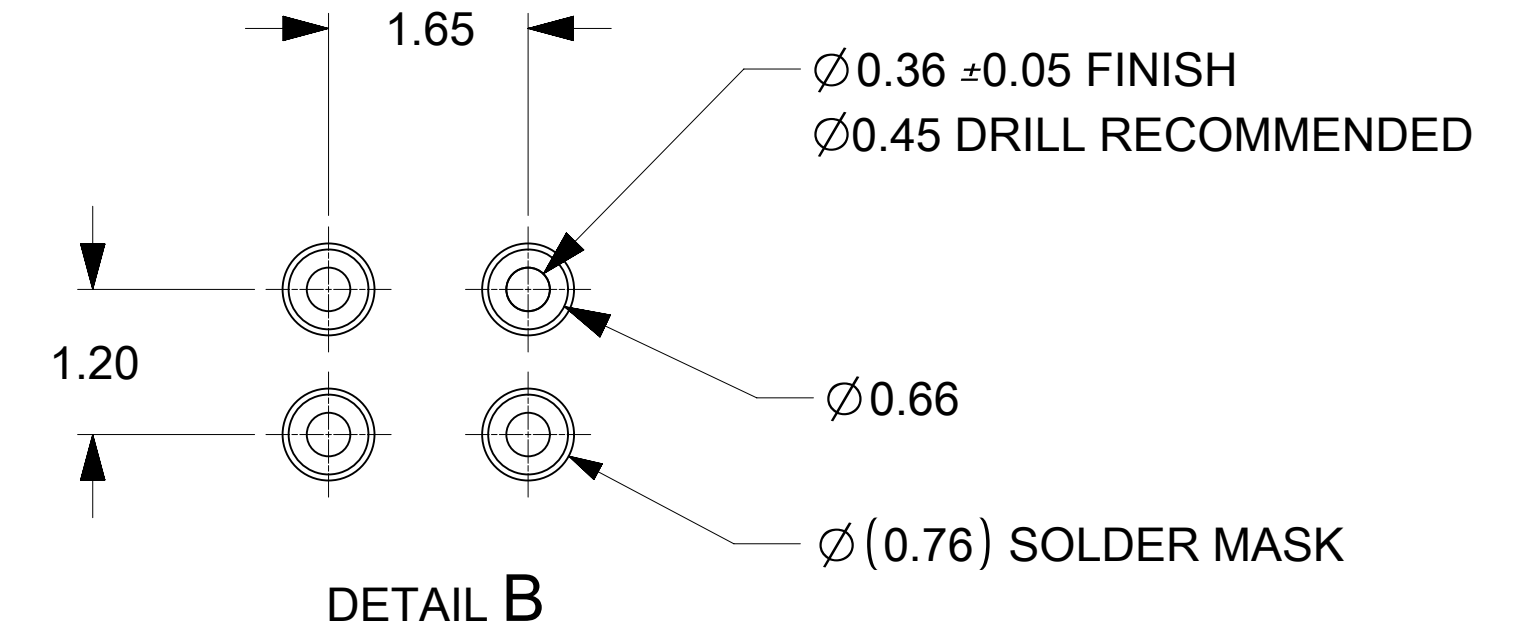


CIRCLED VIAS ARE CONNECTED TO THE SAME SHIELD TERMINAL. ALSO, ALL SHIELD VIAS ARE ELECTRICALLY INTERCONNECTED INSIDE THE CONNECTOR. (SEE CHART FOR EXCEPTIONS FOR POWER TERMINALS*. THE LOW SPEED TRIADS SHIELD TERMINALS MUST BE USED FOR GROUNDS ONLY AND MAY BE CONNECTED TO OTHER SHIELDS IN THIS CONNECTOR EXCEPT THE ELECTRICALLY ISOLATED SHIELDS).

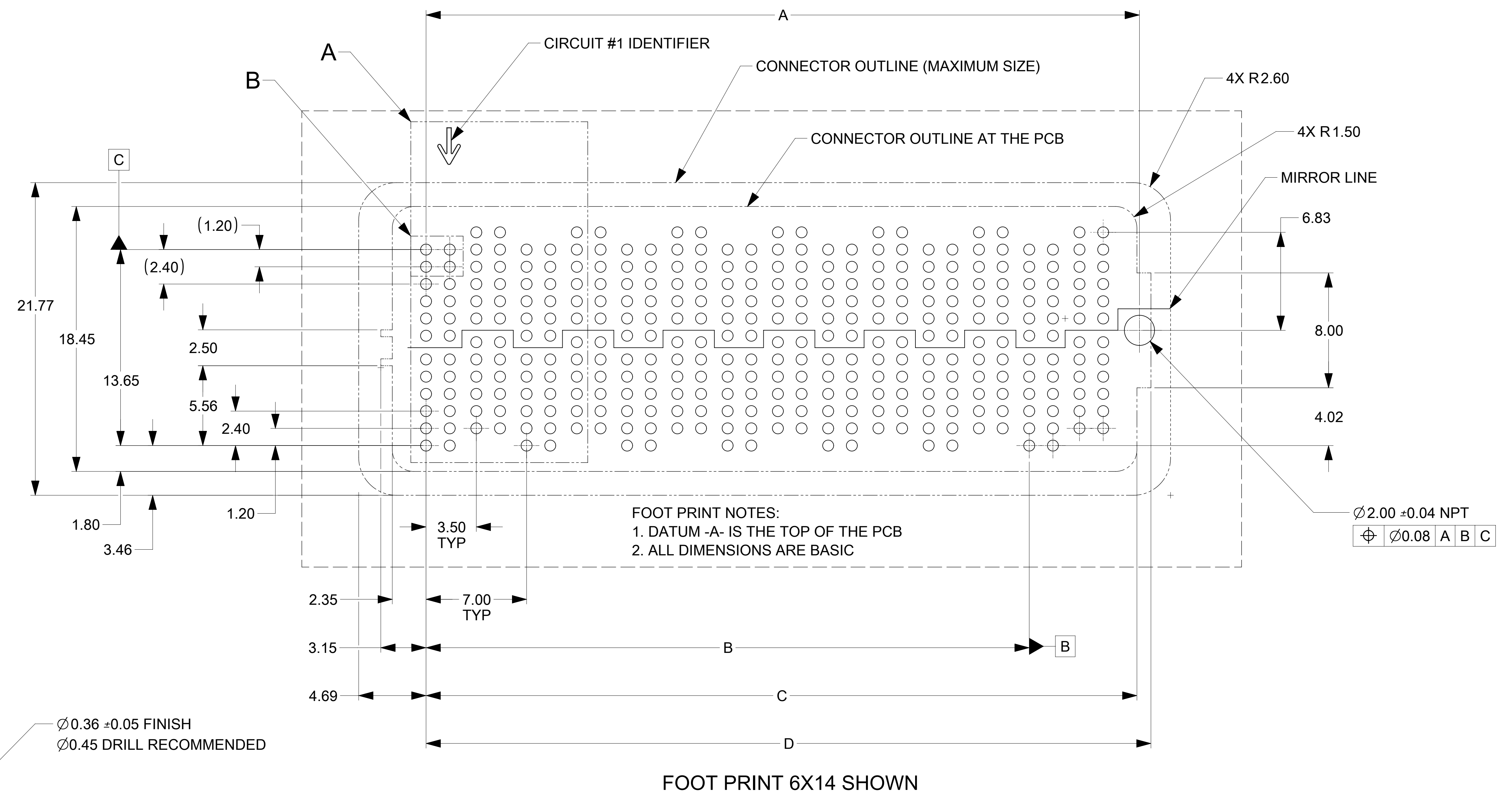


A1	A2	B3	B4	A5	A6	B7
B1	B2	C3	C4	B5	B6	C7
C1	C2	D3	D4	C5	C6	D7
D1	D2	E3	E4	D5	D6	E7
E1	E2	F3	F4	E5	E6	F7
F1	F2	G3	G4	F5	F6	G7
G1	G2	H3	H4	G5	G6	H7
H1	H2	J3	J4	H5	H6	J7
J1	J2	K3	K4	J5	J6	K7
K1	K2	L3	L4	K5	K6	L7
L1	L2	M3	M4	L5	L6	M7
M1	M2			M5	M6	

DETAIL A
SCALE 12:1
NUMBERING SCHEME



DETAIL B
SCALE 16:1
(ALL DIMENSIONS ARE TYP)



FOOT PRINT 6X14 SHOWN

MATERIAL NUMBER	NO. OF COLUMNS	DIM A	DIM B	DIM C	DIM D	ELECTRICALLY ISOLATED SHIELDS *	LOW SPEED TRIADS *
1728320001	14	N/A	42.00	49.50	50.48	COLUMN 14: B27,B28,D27,D28,F27,F28,G27,G28,J27,J28,L27,L28	COLUMN 13: B25,B26,D25,D26,F25,F26,G25,G26,J25,J26,L25,L26
1728320005	10	35.68	28.00	35.50	36.48	N/A	N/A
1728320009	14	49.68	42.00	49.50	50.48	COLUMN 14: B27,B28,D27,D28,F27,F28,G27,G28,J27,J28,L27,L28	COLUMN 13: B25,B26,D25,D26,F25,F26,G25,G26,J25,J26,L25,L26
1728320013	16	56.68	49.00	56.50	57.48	N/A	N/A
1728320017	8	N/A	21.00	28.50	29.48	N/A	N/A
1728320018	12	42.68	35.00	42.50	43.48	N/A	N/A
1728320019	12	42.68	35.00	42.50	43.48	N/A	N/A
1728320021	10	35.68	28.00	35.50	36.48	N/A	N/A
1728320022	10	35.68	28.00	35.50	36.48	N/A	N/A
1728320023	10	35.68	28.00	35.50	36.48	N/A	N/A
1728320024	20	70.68	63.00	70.50	71.48	COLUMN 19: B37,B38,D37,D38,F37,F38,G37,G38,J37,J38,L37,L38 COLUMN 20: B33,B40,D39,D40,F39,F40,G39,G40,J39,J40,L39,L40	COLUMN 18: B35,B36,D35,D36,F35,F36,G35,G36,J35,J36,L35,L36
1728320025	25	88.18	80.50	88.00	88.98	N/A	N/A
1728320026	6	21.68	14.00	21.50	22.48	N/A	N/A
1728320034	16	56.68	49.00	56.50	57.48	COLUMN 15: B29,B30,D29,D30,F29,F30,G29,G30,J29,J30,L29,L30 COLUMN 16: B31,B32,D31,D32,F31,F32,G31,G32,J31,J32,L31,L32	COLUMN 14: B27,B28,D27,D28,F27,F28,G27,G28,J27,J28,L27,L28
1728320036	14	49.68	42.00	49.50	50.48	COLUMN 12: B23,B24,D23,D24,F23,F24,G23,G24,J23,J24,L23,L24 COLUMN 13: B25,B26,D25,D26,F25,F26,G25,G26,J25,J26,L25,L26 COLUMN 14: B27,B28,D27,D28,F27,F28,G27,G28,J27,J28,L27,L28	COLUMN 11: B21,B22,D21,D22,F21,F22,G21,G22,J21,J22,L21,L22

SYMBOLS	THIS DRAWING CONTAINS INFORMATION THAT IS PROPRIETARY TO MOLEX ELECTRONIC TECHNOLOGIES, LLC AND SHOULD NOT BE USED WITHOUT WRITTEN PERMISSION		CURRENT REV DESC: SEE SHEET 1					
	DIMENSION UNITS	SCALE						GENERAL TOLERANCES (UNLESS SPECIFIED)
▽ = 0	mm	1:1	ANGULAR TOL ± 0.5°		EC NO: 630199		NEOPRESS 6 ROW RECEPTACLE ASSY 100 OHM	
▽ = 0	4 PLACES ±		3 PLACES ±		DRWN: CCHEN103 2020/01/08		100 OHM	
▽ = 0	2 PLACES ± 0.15		1 PLACE ±		CHK'D: KPELOZA 2018/01/17		PRODUCT CUSTOMER DRAWING	
▽ = 0	0 PLACES ±		DRAFT WHERE APPLICABLE MUST REMAIN WITHIN DIMENSIONS		APPR: JKACHLIC 2020/02/06		INITIAL REVISION:	
⊠ = 0	THIRD ANGLE PROJECTION		DRAWING		DRWN: GMINNICK 2017/04/21		DOCUMENT NUMBER	
⊠ = 0	E-SIZE		SERIES		APPR: KLANG 2017/07/31		DOC TYPE DOC PART REVISION	
⊠ = 0	SEE TABLE		GENERAL MARKET		1728320002		PSD 000 D1	
DOCUMENT STATUS		P1	RELEASE DATE		2020/02/06 07:26:11		MATERIAL NUMBER	
							CUSTOMER	
							SHEET NUMBER	
							2 OF 2	