

Mechatronics AC Axial Fans – Tachometer & Alarm Output Systems

Some Mechatronics AC fan sizes are available with optional tachometer or locked rotor alarm output systems

Tachometer PN suffix: “B1”

Locked Rotor Alarm PN suffix: “B2”

Applications must supply AC voltage to power the fan and a separate DC voltage to power the signal system. *The signal output system does not have to be connected for the fan to operate.*

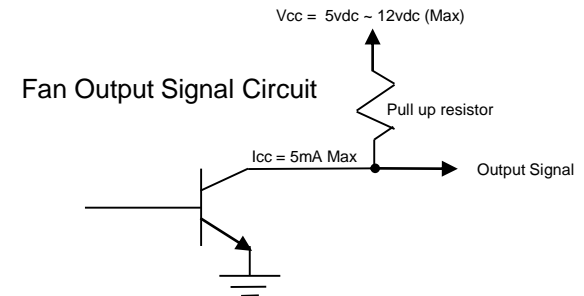
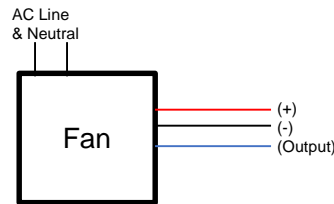
The AC fan signal output is **open collector** and does not have a voltage output. The application must utilize a pull up resistor across a DC power source in the system in order to get the desired voltage on the output.

AC fans with a signal output option will have 3 additional lead wires:

Red = +5vdc ~ +12vdc input

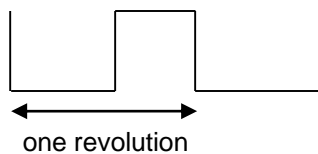
Black = negative DC

3rd Wire = signal output



Tachometer Signal:

- One pulse per revolution square wave output



Locked Rotor Alarm Signal:

- High on pass low on fail

