

Change Notice NP01 Series Illuminated Pushbuttons

Change of Bicolor LED Specifications

Type of Change:

- Engineering Part Number
 Product Appearance

The NP01 Series Illuminated Pushbuttons will have changes to the bicolor LEDs. The change will effect all bicolor models, both standard and custom. Differences in the LED specification values are outlined in the following table.

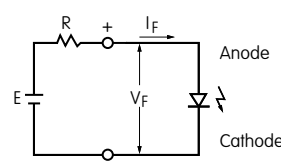


NP01 Pushbutton

| Electrical Specifications for NP01 Bicolor LED | | | | | | | |
|--|--------------|---------------|-------------------------|-------------------------|-------------------------|-------------------------|--|
| Electrical specifications are determined at a basic temperature of 25°C. | | Before Change | | After Change | | Red/Green Bicolor LED | |
| | | CF | | CF | | | |
| ATTENTION ELECTROSTATIC SENSITIVE DEVICES | | Color | Red | Green | Red | Green | |
| Maximum Forward Current | I_{FM} | | 50mA (20) | 30mA (20) | 30mA (25) | 25mA (25) | |
| Typical Forward Current | I_F | | 20mA (15) | 20mA (7.5) | 20mA (20) | 16mA (5) | |
| Typical Forward Current for Alternating Legends | I_F | | 30mA | 25mA | 20mA | 16mA | |
| Forward Voltage | V_F | | 2.0V | 3.5V | 1.95V | 3.3V | |
| Maximum Reverse Voltage | V_{RM} | | 5V | 5V | 5V | 5V | |
| Current Reduction Rate | ΔI_F | | 0.88mA/°C above 40°C | 0.48mA/°C above 30°C | 0.40mA/°C above 25°C | 0.33mA/°C above 25°C | |
| Ambient Temperature Range | | | -25° ~ +50°C | | -25° ~ +50°C | | |

Notes

- Specifications in () in table above denote simultaneous illumination of Red and Green.
- LEDs are an integral part of the switch and are not available separately.
- If the source voltage exceeds the rated voltage, a ballast resistor is required. The resistor value can be calculated by using the formula shown here.
- The changes to bicolor LEDs do not affect any external dimensions of the switches.
- Contact the factory if further details are needed.



$$R = \frac{E - V_F}{I_F}$$

Where: R = Resistor Value (Ohms)
 E = Source Voltage (V)
 V_F = Forward Voltage (V)
 I_F = Forward Current (A)

NP01 Part Numbers Affected by Bicolor LED Specification Changes

| | | | |
|------------------|-------------------|-------------------|-------------------|
| NP0115AG03LCF-JB | NP0115AG03LCF-J01 | NP0115AG03LCF-J02 | NP0115AG03LCF-J03 |
| NP0115HG03LCF-JB | NP0115HG03LCF-J01 | NP0115HG03LCF-J02 | NP0115HG03LCF-J03 |

Effective Date

Changes to Bicolor LEDs will be effective April 2015.

NKK
SWITCHES

<http://www.nkkswitches.com> • 1.877.2BUYNKK (228.9655)

7850 East Gelding Drive • Scottsdale, AZ 85260 • Telephone 480.991.0942 • Fax 480.998.1435

2015/04/06 Engineering Department