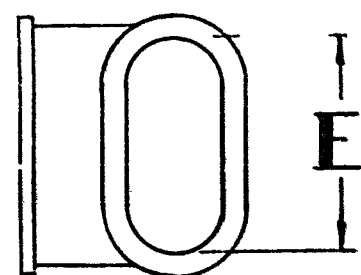
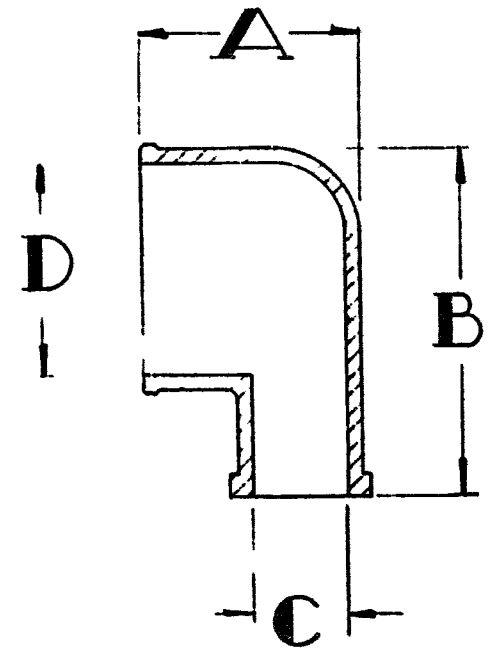
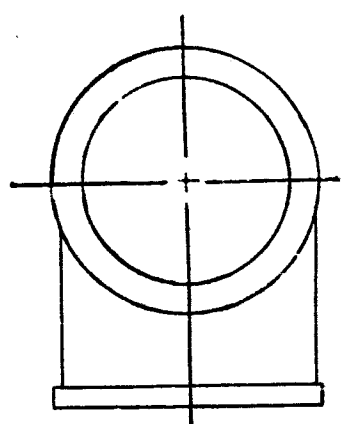


B	DWG No. 040-0000-001	CHG F	CHG. D.C.R.	REVISIONS	BY	DATE	CHK.
			A -	REDRAWN FOR CLARITY	H	8-25-59	LJS
			B -	"PART NO" COLUMN ADDED	H	11-20-59	LJS
			C -	TITLE WAS "CUP, CA3108ER&AR etc."	W H	11-24-59	RM
			D RC	ADDED KPT. SIZES 10 THRU 24 & TITLE	E. T.	11-24-59	LJS
			E R/C	MATL. WAS ZYTEL 101 NC-10 NATURAL	MH	11-25-59	K
			F	REVISED PER DCN M005529	KN	11-15-61	1/1991

INSERTS WITH CA-E
 1/6" x 1/2" CONTACTS
 20 & 16 & 12 CONTACTS
 INSERTS WITH CA-E
 1/8" x 1/4" CONTACTS



KPT SIZE	ER&AR SIZE	A ±.020	A ±.020	B ±.005	C ±.020	D ±.005	E ±.010	PART NO
10	10SL	.625	—	1.000	.272	.617	.616	040-0054-000
12	12S-12	.812	—	1.000	.272	.778	.772	-0095
14	14S-14	.812	—	1.000	.303	.852	.850	-0057
—	—	—	1.500	—	—	—	—	-0090
16	16S-16	.812	—	1.250	.375	.984	.915	-0039
—	—	—	1.750	—	—	—	—	-0092
18	18	1.000	—	1.250	.550	1.116	1.110	-0060
—	—	—	1.750	—	—	—	—	-0094
20	20	1.000	—	1.500	.582	1.245	1.235	-0061
—	—	—	1.750	—	—	—	—	-0095
22	22	1.000	—	1.500	.582	1.357	1.360	-0062
—	—	—	1.750	—	—	—	—	-0096
24	24	1.187	—	1.750	.630	1.490	1.485	-0063
—	—	—	1.875	—	—	—	—	-0097
28	28	1.375	—	2.000	.825	1.735	1.735	-0064
—	—	—	1.875	—	—	—	—	-0098
32	32	1.375	—	2.250	.825	2.021	2.021	-0065
—	—	—	1.875	—	—	—	—	-0099
36	36	1.375	—	2.500	.825	2.240	2.240	-0066
—	—	—	1.875	—	—	—	—	040-0100-000

MATL MOLDED ZYTEL 101 NC-10 NATURAL
 FINISH NONE

Unless otherwise specified
 all dimensions are in inches.
TOLERANCES
 Fractional dimensions ± .010
 Decimal dimensions ± .002
 Angular tolerances ± 1/2°
 Remove all burrs and sharp edges

REF HUGHES
 CODE 05081
 CUSTOMER DRAWING
 CUPPOTTING KPT 08P 10-24
 CUPPOTTING, CA3108ER&AR 10SL-36

CANNON ELECTRIC COMPANY
 666 East Dyer Road Santa Ana, California
 This document and drawings, sketches and
 schematic plans are the property of Cannon
 Electric Co., and no parts thereof may be
 reproduced and used without the written
 consent of the owner.

DWN. W.D.H.	CHK. LJS	APP. [Signature]	SIZE B	WT. ACT. CALC.	SCALE NONE	DWG. No. 040-0000-001	CHG. F
-------------	----------	------------------	--------	----------------	------------	-----------------------	--------