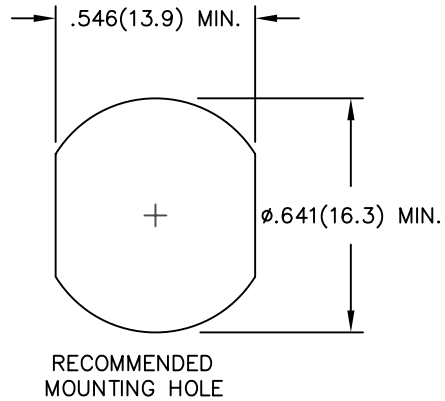
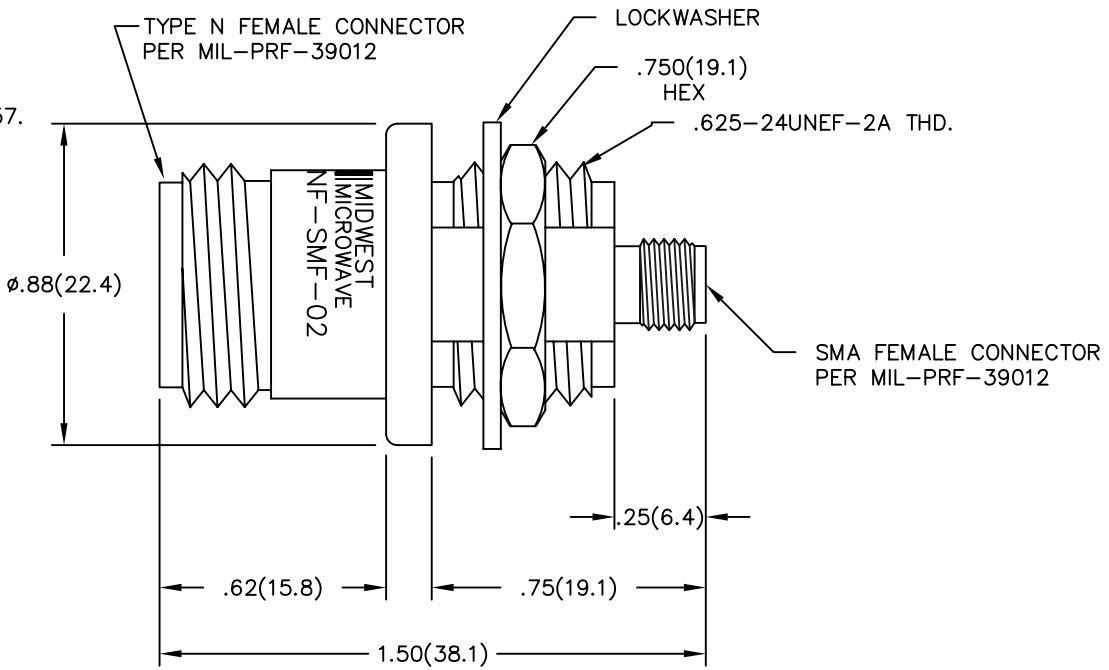


MODEL NUMBER
ADT-2599-NF-SMF-02

NOTES:

- 1.0 MATERIALS:
 - 1.1 HOUSING: STAINLESS STEEL PER ASTM-A582, TYPE 303.
 - 1.2 CENTER CONTACT: BERYLLIUM COPPER ROD ALLOY C172, PER ASTM-B196.
 - 1.3 DIELECTRIC: PTFE FLUOROCARBON PER ASTM-D1457.
- 2.0 PLATING:
 - 2.1 HOUSING: PASSIVATED PER MIL-F-14072 AND QQ-P-35
 - 2.2 CENTER CONTACT: GOLD PER MIL-G-45204, TYPE II, CLASS 2.
- 3.0 ELECTRICAL SPECIFICATIONS:
 - 3.1 FREQUENCY RANGE: DC to 18.0 GHz
 - 3.2 VSWR (MAX):
 - DC to 4.0 GHz: 1.04:1
 - 4.0 to 8.0 GHz: 1.07:1
 - 8.0 to 18.0 GHz: 1.12:1
 - 3.3 IMPEDANCE: 50 OHMS
- 4.0 DIMENENSIONS IN PARENTHESIS ARE IN MILLIMETERS.
- 5.0 MARKING: MARK UNIT AS SHOWN (REF.: INK-02669-27-13)



WAS DWG. # 03356-01-00

| REV. | DESCRIPTION | DATE |
|------|------------------|---------|
| - | RELEASED | 4/23/80 |
| A | ECR 6545 | 7/6/89 |
| A1 | UPDATE MODEL # | 7/20/92 |
| B | ECN ??????? | 1/23/96 |
| B1 | ADDED TITLEBLOCK | 3/10/05 |
| E | ECO 22121 | 8/17/09 |

| | | | |
|---|--------------------------------|--|--------------|
| NOTICE: The information contained in this drawing is proprietary and must not be used without the permission of Emerson Network Power. UNLESS OTHERWISE NOTED DIMENSIONS ARE IN INCHES AND TOLERANCES ARE: 3 PLACE DECIMALS ±.005 2 PLACE DECIMALS ±.02 FRACTIONS ±1/64 PARALLELITY: T.I.R. _____ FLATNESS: T.I.R. _____ CONCENTRICITY: T.I.R. _____ ANGLES AND PERPENDICULARITY: ±1° | CASE CODE 34078 | MIDWEST MICROWAVE | |
| | | TITLE ADAPTER TYPE N FEMALE TO SMA FEMALE OUTLINE DRAWING | |
| DRAWN/DATE M.STAFFORD 1/23/96 | ENG./DATE C.RIGGE 3/1/96 | DRAWING NUMBER ADT-2599-NF-SMF-02-01 | REV. E |
| CHECKED/DATE A.BEATTY 2/9/96 | APPROVED/DATE | SCALE: 5=1 | SHEET 1 of 1 |