

NOTES:

1. MATERIALS:

CONNECTOR HOUSING: HIGH TEMPERATURE THERMOPLASTIC
GLASS FILLED, UL 94V-0
EMI CAGE: NICKEL SILVER ALLOY
EMI FINGERS: COPPER ALLOY
TERMINALS: COPPER ALLOY

2. FINISHES:

EMI FINGERS: 0.50μM MIN NICKEL
CONTACT AREA: 0.76μM MIN GOLD OVER 2.54μM MIN NICKEL
TAIL AREA:
OPTION 1: 0.76μM-1.52μM TIN/LEAD (90/10) OVER 2.54μM MIN NICKEL
OPTION 2: 0.76μM-1.52μM TIN (LEAD FREE) OVER 2.54μM MIN NICKEL

3. PRODUCT SPECIFICATION: PS-76866-001

4. PACKAGING SPECIFICATION: PK-76866-001

5. MATES WITH: MOLEX CABLE SERIES 111068

6. MOUNTING HARDWARE: M2X0.4 BUTTON HEAD SCREW

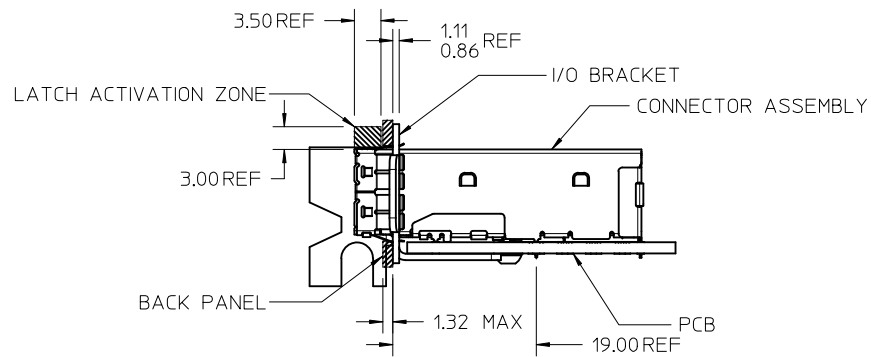
MOUNTING SCREW LENGTH: BOARD THICKNESS + 1.4MM MAX (0.9MM MIN)

PLATING OPT.	MATERIAL NO.
OPTION 1	76866-0001
OPTION 2	76866-0011

GEOMETRY UPDATED IEC NO: UCP2011-0564 DR: DRWINSERWACKI 2010/08/30 CHKD: MBANAKIS 2010/10/12 APPR: MBANAKIS	QUALITY SYMBOLS 	GENERAL TOLERANCES (UNLESS SPECIFIED) <table border="1"> <tr> <th></th> <th>mm</th> <th>INCH</th> </tr> <tr> <td>4 PLACES</td> <td>± 0.15</td> <td>± 0.006</td> </tr> <tr> <td>3 PLACES</td> <td>± 0.25</td> <td>± 0.010</td> </tr> <tr> <td>2 PLACES</td> <td>± 0.38</td> <td>± 0.015</td> </tr> <tr> <td>1 PLACE</td> <td>± 0.51</td> <td>± 0.020</td> </tr> </table>		mm	INCH	4 PLACES	± 0.15	± 0.006	3 PLACES	± 0.25	± 0.010	2 PLACES	± 0.38	± 0.015	1 PLACE	± 0.51	± 0.020	DIMENSION STYLE MM ONLY	SCALE 2:1	DESIGN UNITS METRIC	THIRD ANGLE PROJECTION
		mm	INCH																		
	4 PLACES	± 0.15	± 0.006																		
	3 PLACES	± 0.25	± 0.010																		
2 PLACES	± 0.38	± 0.015																			
1 PLACE	± 0.51	± 0.020																			
DRAWN BY: KLANG DATE: 2009/03/04 CHECKED BY: DATE:		APPROVED BY: MBANAKIS DATE: 2010/01/14		TITLE IPASS PLUS HD 1X1 ASSEMBLY																	
DRAFT WHERE APPLICABLE MUST REMAIN WITHIN DIMENSIONS		ANGULAR ±1/2°		MOLEX INCORPORATED DOCUMENT NO. SD-76866-001																	
SIZE C		SEE CHART		SHEET NO. 1 OF 7																	

THIS DRAWING CONTAINS INFORMATION THAT IS PROPRIETARY TO MOLEX INCORPORATED AND SHOULD NOT BE USED WITHOUT WRITTEN PERMISSION

PCI ADD-IN CARD APPLICATION



ASSEMBLED VIEW

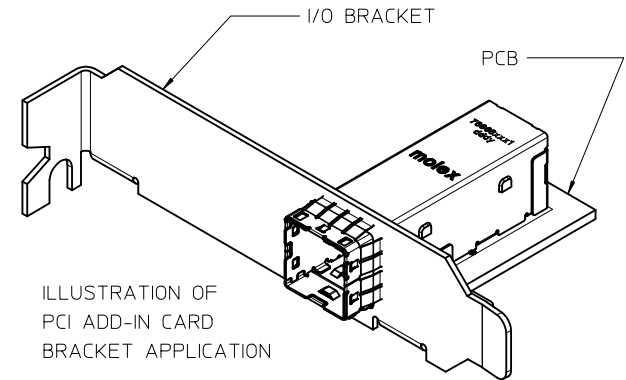
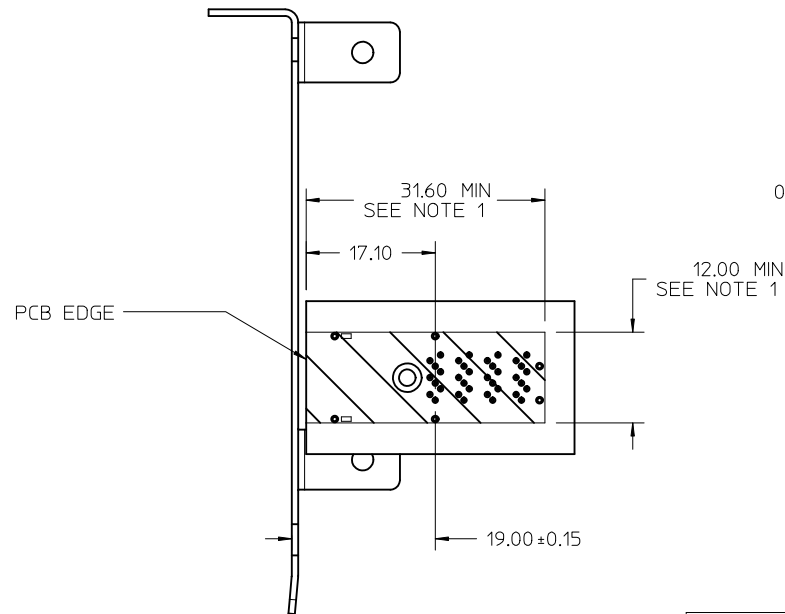
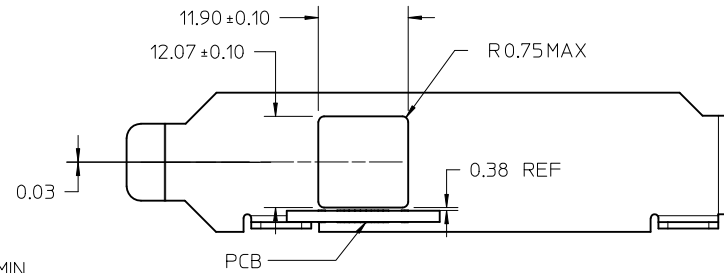


ILLUSTRATION OF PCI ADD-IN CARD BRACKET APPLICATION



PCB TO BRACKET VIEW



I/O BRACKET CUT OUT (BRACKET NOT SUPPLIED)

NOTES:
1. CONNECTOR KEEP OUT AREA

SEE SHEET 1 EC NO: UCP2011-0564 DRW: WSERWACKI 2010/08/30 CHKD: 2010/10/12 APPR: MBANAKIS	QUALITY SYMBOLS	GENERAL TOLERANCES (UNLESS SPECIFIED)	DIMENSION STYLE	SCALE	DESIGN UNITS	THIRD ANGLE PROJECTION
	▼=0 ▽=0	mm INCH 4 PLACES ± --- ± --- 3 PLACES ± --- ± --- 2 PLACES ± 0.13 ± --- 1 PLACE ± 0.25 ± --- ANGULAR ± 1/2°	MM ONLY	2:1	METRIC	
	DESCRIPTION	TITLE	DRAWN BY	DATE	IPASS PLUS HD 1X1 ASSEMBLY	
			KLANG	2009/03/04		
			CHECKED BY	DATE		
			APPROVED BY	DATE	MOLEX INCORPORATED	
			MBANAKIS	2010/01/14	SD-76866-001	
			MATERIAL NO.	DOCUMENT NO.	SHEET NO. 2 OF 7	
		DRAFT WHERE APPLICABLE MUST REMAIN WITHIN DIMENSIONS	SEE CHART	THIS DRAWING CONTAINS INFORMATION THAT IS PROPRIETARY TO MOLEX INCORPORATED AND SHOULD NOT BE USED WITHOUT WRITTEN PERMISSION		

ALL OTHER M/B APPLICATIONS

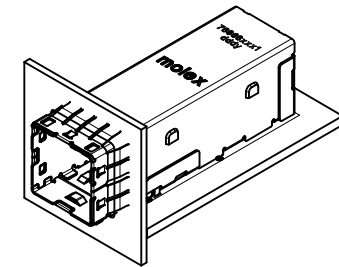
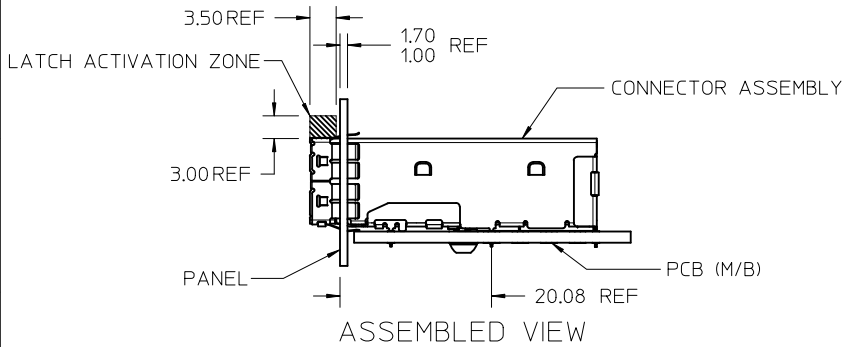
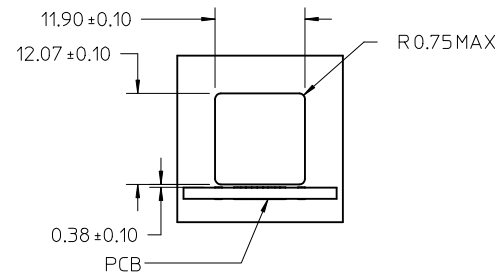
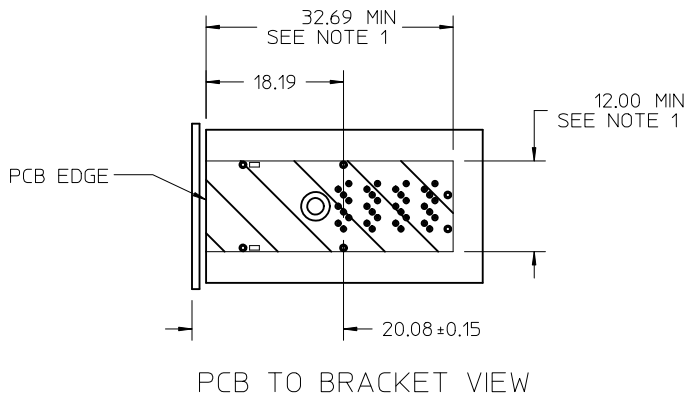


ILLUSTRATION OF ALL OTHER M/B BRACKET APPLICATION

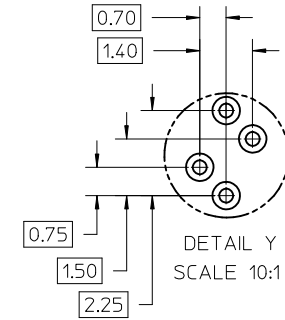
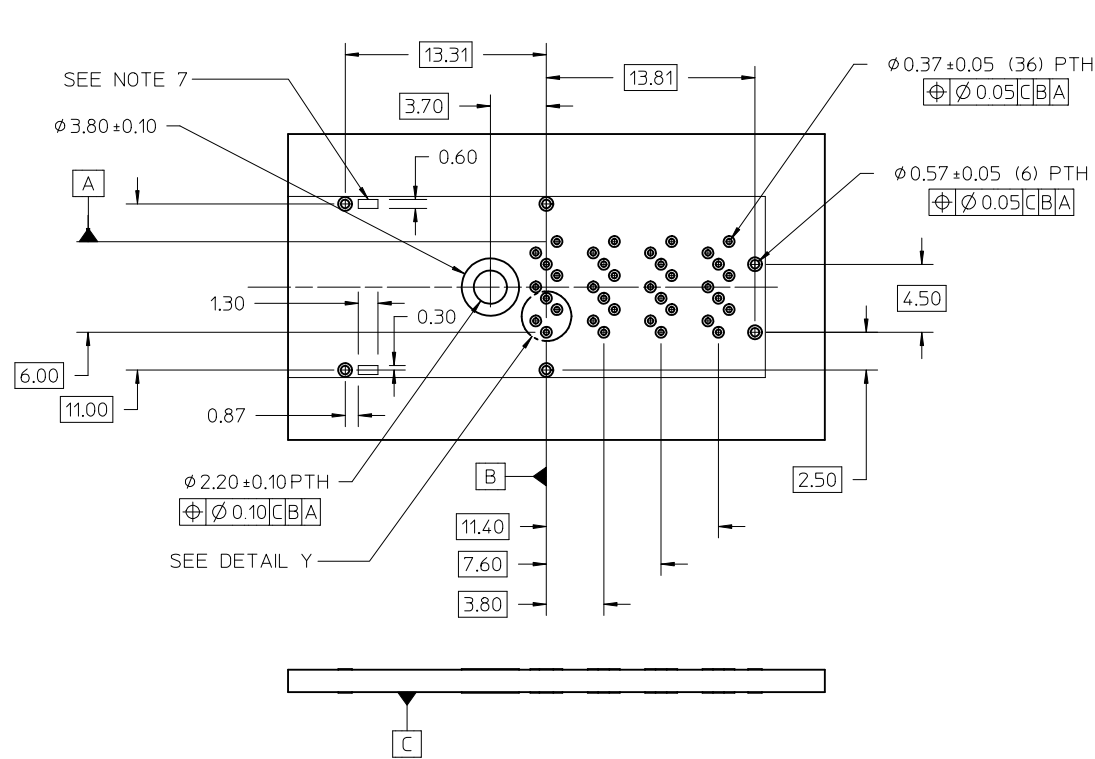


I/O BRACKET CUT OUT (BRACKET NOT SUPPLIED)

NOTES:
1. CONNECTOR KEEP OUT AREA

SEE SHEET 1 EC NO: UCP2011-0564 DRW: MRSERWACKI 2010/08/30 CHKD: 2010/10/12 APPR: MBANAKIS	QUALITY SYMBOLS	GENERAL TOLERANCES (UNLESS SPECIFIED)		DIMENSION STYLE	SCALE	DESIGN UNITS	THIRD ANGLE PROJECTION
	▽=0	mm	INCH	MM ONLY	2:1	METRIC	☉
	▽=0	4 PLACES ± ---	± ---	DRAWN BY	DATE	TITLE	
	▽=0	3 PLACES ± ---	± ---	KLANG	2009/03/04	IPASS PLUS HD 1X1 ASSEMBLY	
		2 PLACES ± 0.13	± ---	CHECKED BY	DATE		
		1 PLACE ± 0.25	± ---	APPROVED BY	DATE		
		ANGULAR ± 1/2°		MBANAKIS	2010/01/14	MOLEX INCORPORATED	
		DRAFT WHERE APPLICABLE MUST REMAIN WITHIN DIMENSIONS		MATERIAL NO.	DOCUMENT NO.	SD-76866-001	
				SIZE	THIS DRAWING CONTAINS INFORMATION THAT IS PROPRIETARY TO MOLEX INCORPORATED AND SHOULD NOT BE USED WITHOUT WRITTEN PERMISSION		
							SHEET NO. 3 OF 7

RECOMMENDED FOOTPRINT



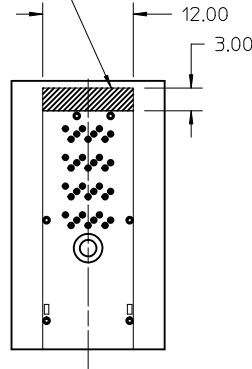
NOTES:

1. RECOMMENDED DRILL SIZE FOR A 0.37ϕ FINISHED PTH IS 0.48ϕ
2. RECOMMENDED ANNULAR RING AROUND 0.37ϕ FINISHED PTH IS 0.73ϕ
3. MINIMUM RECOMMENDED SPACING: 14.00MM
4. MINIMUM PCB THICKNESS: 1.57MM
5. RECOMMENDED DRILL SIZE FOR A 0.57ϕ FINISHED PTH IS 0.68ϕ
6. RECOMMENDED ANNULAR RING AROUND A 0.57ϕ FINISHED PTH IS 0.93ϕ
7. GAGE STAND OFF AREA, NO TRACES ON SURFACE OF PCB IN THESE AREAS

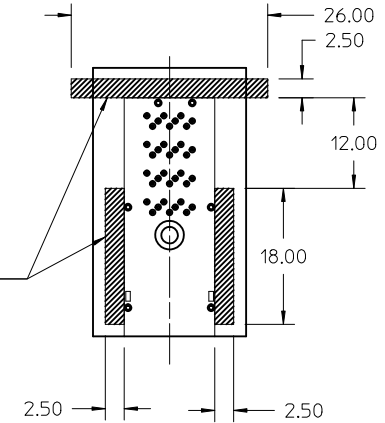
SEE SHEET 1 EC NO: UCP2011-0564 DRAWN: SERWACKI 2010/08/30 CHKD: 2010/10/12 APPR: MBANAKIS	QUALITY SYMBOLS	GENERAL TOLERANCES (UNLESS SPECIFIED)		DIMENSION STYLE	SCALE	DESIGN UNITS	THIRD ANGLE PROJECTION
	$\nabla=0$ $\nabla=0$			MM ONLY	4:1	METRIC	
				DRAWN BY	DATE	TITLE	
				KLANG	2009/03/04	IPASS PLUS HD 1X1 ASSEMBLY	
				CHECKED BY	DATE		
				APPROVED BY	DATE		
				MBANAKIS	2010/01/14		
				MATERIAL NO.	DOCUMENT NO.		
				SEE CHART		MOLEX INCORPORATED	
						SD-76866-001	
						SHEET NO. 4 OF 7	
				THIS DRAWING CONTAINS INFORMATION THAT IS PROPRIETARY TO MOLEX INCORPORATED AND SHOULD NOT BE USED WITHOUT WRITTEN PERMISSION			

RECOMMENDED TOOLING KEEP OUT AREAS

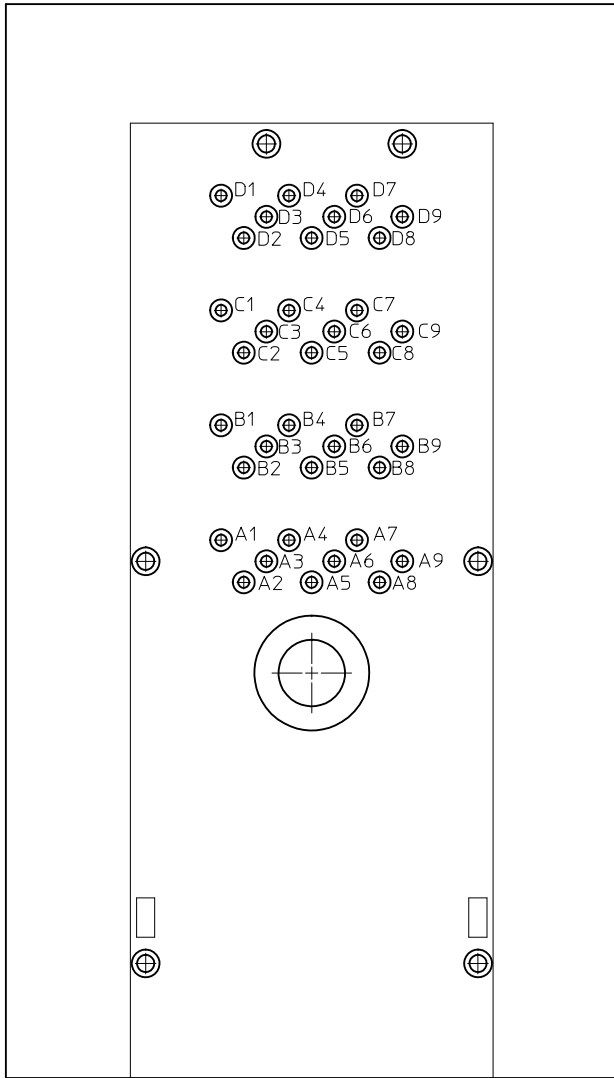
RECOMMENDED INSERTION TOOL
KEEP OUT AREA
NO COMPONENTS IN THIS AREA
MORE THAN 7.50 mm TALL



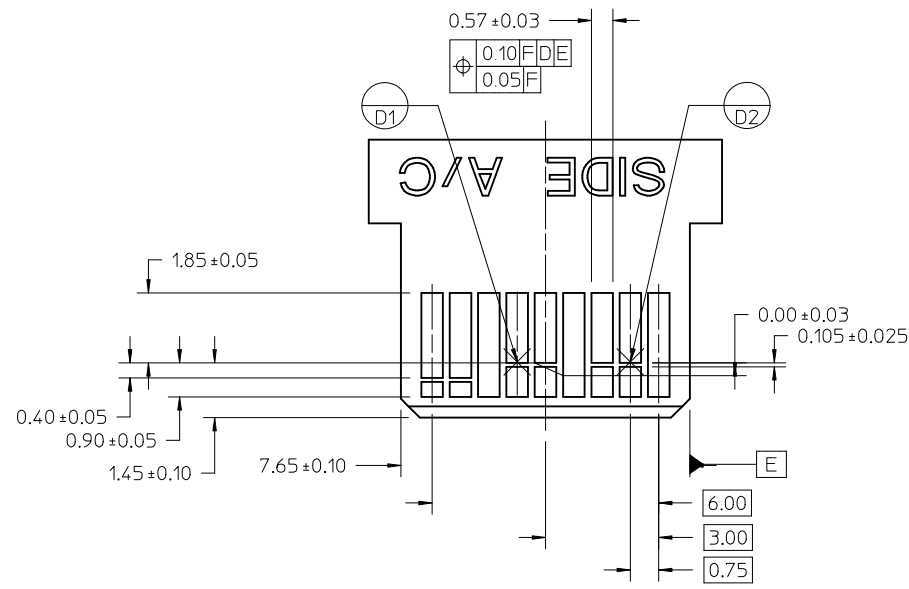
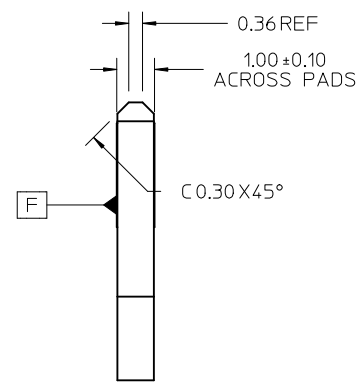
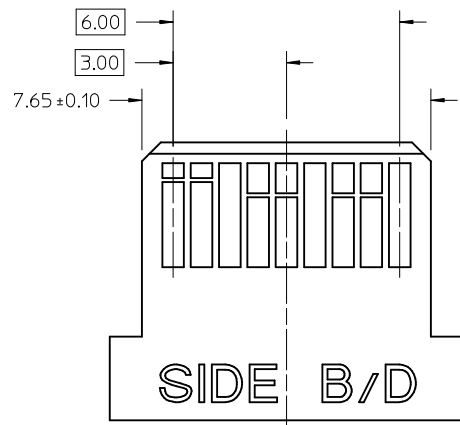
RECOMMENDED EXTRACTION TOOL
KEEP OUT AREA
NO COMPONENTS IN THESE AREAS



SEE SHEET 1 EC NO: UCP2011-0564 DRAWN BY: DRWIN/SERWACKI 2010/08/30 CHKD: 2010/10/12 APPR: MBANAKIS	QUALITY SYMBOLS	GENERAL TOLERANCES (UNLESS SPECIFIED)		DIMENSION STYLE	SCALE	DESIGN UNITS	THIRD ANGLE PROJECTION
	▽=0	mm	INCH	MM ONLY	2:1	METRIC	☉
	▽=0	4 PLACES ± --- ± ---	± --- ± ---	DRAWN BY	DATE	TITLE	
	▽=0	3 PLACES ± --- ± ---	± --- ± ---	KLANG	2009/03/04	IPASS PLUS HD 1X1 ASSEMBLY	
		2 PLACES ± 0.13 ± ---		CHECKED BY	DATE		
		1 PLACE ± 0.25 ± ---		APPROVED BY	DATE		
		ANGULAR ± 1/2°		MBANAKIS	2010/01/14		
		DRAFT WHERE APPLICABLE MUST REMAIN WITHIN DIMENSIONS		MATERIAL NO.	SEE CHART	MOLEX INCORPORATED	
				SIZE	THIS DRAWING CONTAINS INFORMATION THAT IS PROPRIETARY TO MOLEX INCORPORATED AND SHOULD NOT BE USED WITHOUT WRITTEN PERMISSION	DOCUMENT NO.	SHEET NO.
						SD-76866-001	5 OF 7



SEE SHEET 1 EC NO: UCP2011-0564 DRAWN BY: DRWINHSERWACKI 2010/08/30 CHKD: MBANAKIS 2010/10/12 APPR: MBANAKIS	QUALITY SYMBOLS	GENERAL TOLERANCES (UNLESS SPECIFIED)		DIMENSION STYLE	SCALE	DESIGN UNITS	THIRD ANGLE PROJECTION	
	▼=0			MM ONLY	8:1	METRIC		
	▽=0						TITLE	
							IPASS PLUS HD 1X1 ASSEMBLY	
							APPROVED BY DATE	
							MBANAKIS 2010/01/14	
							MATERIAL NO. DOCUMENT NO.	
							MOLEX INCORPORATED	
							SD-76866-001	
							SHEET NO. 6 OF 7	
							THIS DRAWING CONTAINS INFORMATION THAT IS PROPRIETARY TO MOLEX INCORPORATED AND SHOULD NOT BE USED WITHOUT WRITTEN PERMISSION	



- NOTES:
- 0.05 MINIMUM KEEP OUT FOR SOLDER MASK AROUND ALL PADS
 - DATUM D TARGETS ARE DEFINED BY THE RESPECTIVE PAD CENTER LINES AND THE LEADING EDGE OF THE TARGET PADS

SEE SHEET 1 EC NO: UCP2011-0564 DRWNSERWACKI 2010/08/30 CHKD: 2010/10/12 APPR: MBANAKIS	QUALITY SYMBOLS ▽=0 ▽=0	GENERAL TOLERANCES (UNLESS SPECIFIED) <table border="1"> <tr> <td></td> <td>mm</td> <td>INCH</td> </tr> <tr> <td>4 PLACES</td> <td>± ---</td> <td>± ---</td> </tr> <tr> <td>3 PLACES</td> <td>± ---</td> <td>± ---</td> </tr> <tr> <td>2 PLACES</td> <td>± 0.13</td> <td>± ---</td> </tr> <tr> <td>1 PLACE</td> <td>± 0.25</td> <td>± ---</td> </tr> </table>		mm	INCH	4 PLACES	± ---	± ---	3 PLACES	± ---	± ---	2 PLACES	± 0.13	± ---	1 PLACE	± 0.25	± ---	DIMENSION STYLE MM ONLY DRAWN BY: KLANG DATE: 2009/03/04 CHECKED BY: _____ DATE: _____	SCALE: 4:1 DESIGN UNITS: METRIC THIRD ANGLE PROJECTION	TITLE: IPASS PLUS HD 1X1 ASSEMBLY
		mm	INCH																	
	4 PLACES	± ---	± ---																	
3 PLACES	± ---	± ---																		
2 PLACES	± 0.13	± ---																		
1 PLACE	± 0.25	± ---																		
DRAFT WHERE APPLICABLE MUST REMAIN WITHIN DIMENSIONS	APPROVED BY: MBANAKIS DATE: 2010/01/14	MATERIAL NO.	MOLEX INCORPORATED	SHEET NO. 7 OF 7																
SIZE: C	SEE CHART	DOCUMENT NO. SD-76866-001	THIS DRAWING CONTAINS INFORMATION THAT IS PROPRIETARY TO MOLEX INCORPORATED AND SHOULD NOT BE USED WITHOUT WRITTEN PERMISSION																	