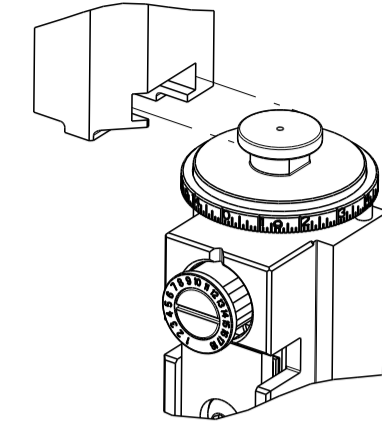


PART NUMBER	REVISION	DESCRIPTION	FEED TYPE
2151763-1	D	FINE CRIMP HEIGHT ADJUST	MECHANICAL
2151763-2	D	FINE CRIMP HEIGHT ADJUST	PNEUMATIC
7-2151763-1	D	MECHANICAL AND CRIMP TOOLING KIT	MECHANICAL
7-2151763-2	D	PNEUMATIC AND CRIMP TOOLING KIT	PNEUMATIC
7-2151763-7	A	CRIMP TOOLING KIT	-

ATLANTIC VERSION TERMINATOR INTERFACE ADAPTER



APPLICATOR DATA

CRIMP	SIZE	TYPE
WIRE	1.57 mm [.062]	F
INSUL	1.57 mm [.062]	O

APPLICATOR INSTRUCTIONS
408-35042

TERMINAL DATA: YAZAKI TERMINAL YAZAKI CRIMP SPECIFICATION

TERMINAL NAME: 0.64 SYSTEM CONNECTOR - MALE TERMINAL

WIRE STRIP LENGTH	INSULATION DIAMETER RANGE
3.75-3.77 mm [.148-.148 IN]	Ø1.40-2.20 mm [.055-.087 IN]

TERMINAL APPLICATION SPECIFICATION (A)WA1675 Rev 01

TERMINALS APPLIED

TE TERMINAL	YAZAKI TERMINAL	TE TERMINAL	YAZAKI TERMINAL
(A) 1949224-1	(A) 7114-4721-02		

TERMINAL DATA: YAZAKI TERMINAL YAZAKI CRIMP SPECIFICATION

TERMINAL NAME: 0.64 SYSTEM CONNECTOR - FEMALE TERMINAL

WIRE STRIP LENGTH	INSULATION DIAMETER RANGE
3.75-3.77 mm [.148-.148 IN]	Ø1.40-2.20 mm [.055-.087 IN]

TERMINAL APPLICATION SPECIFICATION (B)WA1742 Rev 07

TERMINALS APPLIED

TE TERMINAL	YAZAKI TERMINAL	TE TERMINAL	YAZAKI TERMINAL
(B) 1949220-1	(B) 7116-4721-02	(B) 1949220-2	(B) 7116-4721-08

WIRE SIZE	CRIMP HEIGHT mm [INCH]	CRIMP HEIGHT REFERENCE SETTING
0.85mm2	1.00 +/- 0.05 [.039 +/- .002]	7.9
0.50mm2	0.85 +/- 0.05 [.033 +/- .002]	9.5

WIRE SIZE	CRIMP HEIGHT mm [INCH]	CRIMP HEIGHT REFERENCE SETTING
0.85mm2	1.20 +/- 0.05 [.047 +/- .002]	3.0
0.75mm2	1.07 +/- 0.05 [.042 +/- .002]	4.3
0.50mm2	1.05 +/- 0.05 [.041 +/- .002]	4.5

- RECOMMENDED SPARE PARTS
- REFER TO SUPPLIED INSTRUCTION SHEET FOR CLEANING, LUBRICATION AND STORAGE OF APPLICATOR.
- APPLY PART NUMBER 2-23419-6 LOCTITE TO THREADS OF ITEM 242.
- CRIMP HEIGHT REFERENCE SETTING WAS THE SETTING USED WHEN THE APPLICATOR WAS QUALIFIED AT THE FACTORY. ADJUSTMENT MAY BE NECESSARY WHEN RUNNING APPLICATOR IN THE FIELD.
- UNLESS SPECIFIED OTHERWISE TORQUE VALUES SHALL BE USED PER DOCUMENT, 101-35000.
- TERMINAL LUBRICANT IS RECOMMENDED.
- THE CUSTOMER ACKNOWLEDGES THAT THE TERMINAL MANUFACTURER'S CRIMP SPECIFICATIONS ARE UNKNOWN. IN ADDITION THE CUSTOMER ACKNOWLEDGES THAT TE CONNECTIVITY HAS CALCULATED CRIMP SPECIFICATIONS FOR THIS PRODUCT THAT MAY NOT MATCH THE TERMINAL MANUFACTURER'S SPECIFICATIONS. TE CONNECTIVITY USES ACCEPTED PRACTICES TO DESIGN TERMINATION TOOLING FOR NON-TE CONNECTIVITY PRODUCTS. HOWEVER, **TE CONNECTIVITY EXPRESSLY DISCLAIMS ANY AND ALL WARRANTIES THAT THE TOOLING WILL RELIABLY APPLY NON-TE CONNECTIVITY PRODUCTS, INCLUDING BUT NOT LIMITED TO IMPLIED WARRANTIES OF MERCHANTABILITY OR FITNESS FOR PARTICULAR PURPOSE. THE CUSTOMER ASSUMES ALL RESPONSIBILITY AND LIABILITY FOR THE PERFORMANCE OF TERMINATED ASSEMBLIES USING SUCH TOOLING.** THE CUSTOMER EXPRESSLY INDEMNIFIES TE CONNECTIVITY AND SHALL HOLD TE CONNECTIVITY HARMLESS FROM ALL CLAIMS, DEMANDS, LOSSES, EXPENSES AND LIABILITIES RESULTING FROM THE USE OF THIS TOOLING ON NON-TE CONNECTIVITY PRODUCTS.

***WARNING**
 ON INSTALLATION, SET WIRE DISC TO CRIMP HEIGHT REFERENCE SETTING FOR LARGEST WIRE SIZE. CRIMP HEIGHT REFERENCE SETTINGS GREATER THAN THE VALUE SHOWN MAY CAUSE DAMAGE TO THE CRIMP TOOLING, REFER TO THE INSTRUCTION SHEET FOR PROPER SETUP AND ADJUSTMENTS.

ATLANTIC VERSION
 Shown on sheets 1 of 4 & 2 of 4
 (Pacific version shown on sheets 3 of 4 & 4 of 4)

LOC	DIST	REV	DATE	BY	CHKD	APVD
A	66	C	200CT2020	JAH	RK	
		D	14MAY2021	FZ	RK	
		D1	15JUL2021	FZ	RK	
			29JAN2022	FZ	RK	

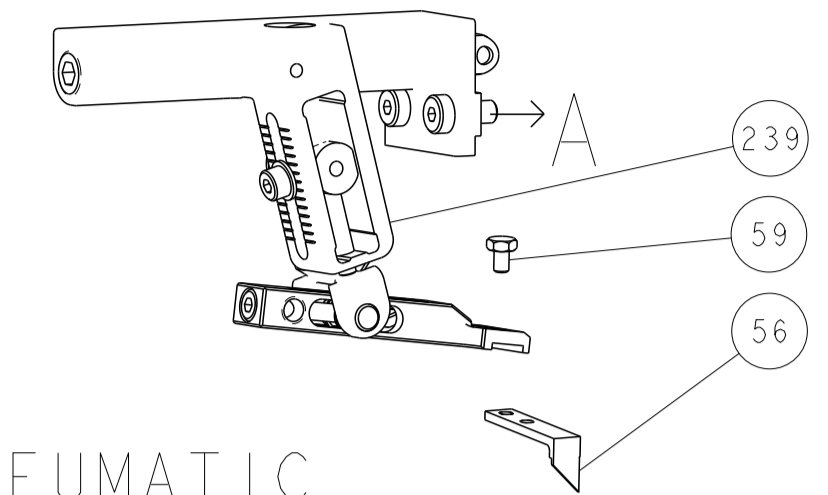
QTY	UNIT	DESCRIPTION	DATE	BY	CHKD	APVD
-	1	2119641-1	FEED CAM, AIR FEED			248
-	1	2119082-8	CAM, SNAIL, INSULATION ADJUSTMENT			244
-	1	2079764-1	WASHER, WAVE SPRING, CREST-TO-CREST			243
-	1	2119083-1	RETAINER, INSULATION DIAL			242
-	1	7-18023-7	SCR, SKT HD CAP M3 X 4.0			241
-	1	2119580-1	MECHANICAL FEED ASSEMBLY			239
-	1	2844940-1	AIR FEED MODULE			238
-	REF	994970-2	COUNTER, MAGNETIC			164
-	1	2119955-1	ASSY, LUBRICATOR, SIDE FEED			113
-	1	2844908-1	SCREW, LOCKING			99
-	1	2844907-1	POST, LOCKING			98
-	1	455888-5	SPACER, CRIMPER			82
-	1	5-547505-2	SPRING, COMPRESSION			77
-	1	854769-4	HOLDER, INS			74
-	1	1803607-3	DOCUMENTATION PACKAGE			71
-	1	2119740-1	TAG, IDENTIFICATION			67
-	2	2168078-1	SCREW, DRIVE, RH, RoHS, 2 x .188			66
-	1	2168083-2	SCR, SKT HD CAP, RoHS, M4 X 8.0			60
-	1	5-18022-5	SCR, HEX HD CAP, M4 X 6.0			59
-	1	21028-2	PIN, SLOTTED SPRING .062 X .250			58
-	1	1338685-1	PAWL, FEED			56
-	4	2168083-3	SCR, SKT HD CAP, RoHS, M4 X 12.0			54
-	2	1-2168083-0	SCR, SKT HD CAP, RoHS, M4 X 10			53
-	1	1803382-6	HOLD DOWN, SPRING LOADED			50
-	1	18023-9	SCR, SKT HD CAP M4 X 6.0			49
-	1	2119652-1	FEED CAM, PRE FEED			48
-	1	2119653-1	FEED CAM, POST FEED			47
-	1	1803583-9	APPLICATOR BASIC ASSEMBLY, SF			46
-	1	1803515-1	RAM ASSEMBLY, SF ATLANTIC			44
-	1	1803602-1	SCR, BHSC, RoHS (M8 X 25)			41
-	1	1752356-3	SUPPORT, TERMINAL			34
-	2	2079383-5	SCR, BHSC, RoHS (M4 X 20)			33
-	2	2-2844962-4	SPACER, CYLINDRICAL, STRIP GUIDE			30
-	1	2844992-2	ASSEMBLY, STRIP GUIDE			29
-	1	1-455888-0	SPACER, CRIMPER			28
-	1	240792-1	DRAG, TERMINAL			25
-	1	1320928-6	STRIP GUIDE			24
-	1	2168083-2	SCR, SKT HD CAP, RoHS, M4 X 8.0			21
-	2	1-18028-2	WASHER, FLAT, REG M4			20
-	1	2119533-1	STRIPPER, SIDE FEED			19
-	1	2119806-1	INSERT, SHEAR			13
-	1	3-22280-3	SPRING, COMPRESSION			12
-	1	1-356885-4	STOP, SHEAR			11
-	1	2119805-1	SHEAR HOLDER, FRONT			10
-	1	1803095-1	FLOATING SHEAR, FRONT			9
-	1	1-1633932-5	ANVIL, COMBINATION			8
-	-	-	-			7
-	-	-	-			6
-	1	2119780-2	DEPRESSOR, SHEAR			5
-	1	3-238011-1	BLOCK, CRIMPER SPACER			4
-	1	1-1803019-3	CRIMPER, INSULATION O			3
-	-	-	-			2
-	1	5-456403-6	CRIMPER, WIRE PREMIUM			1

ITEM NO	PART NO	DESCRIPTION
-77	-72	-71
-2	-1	

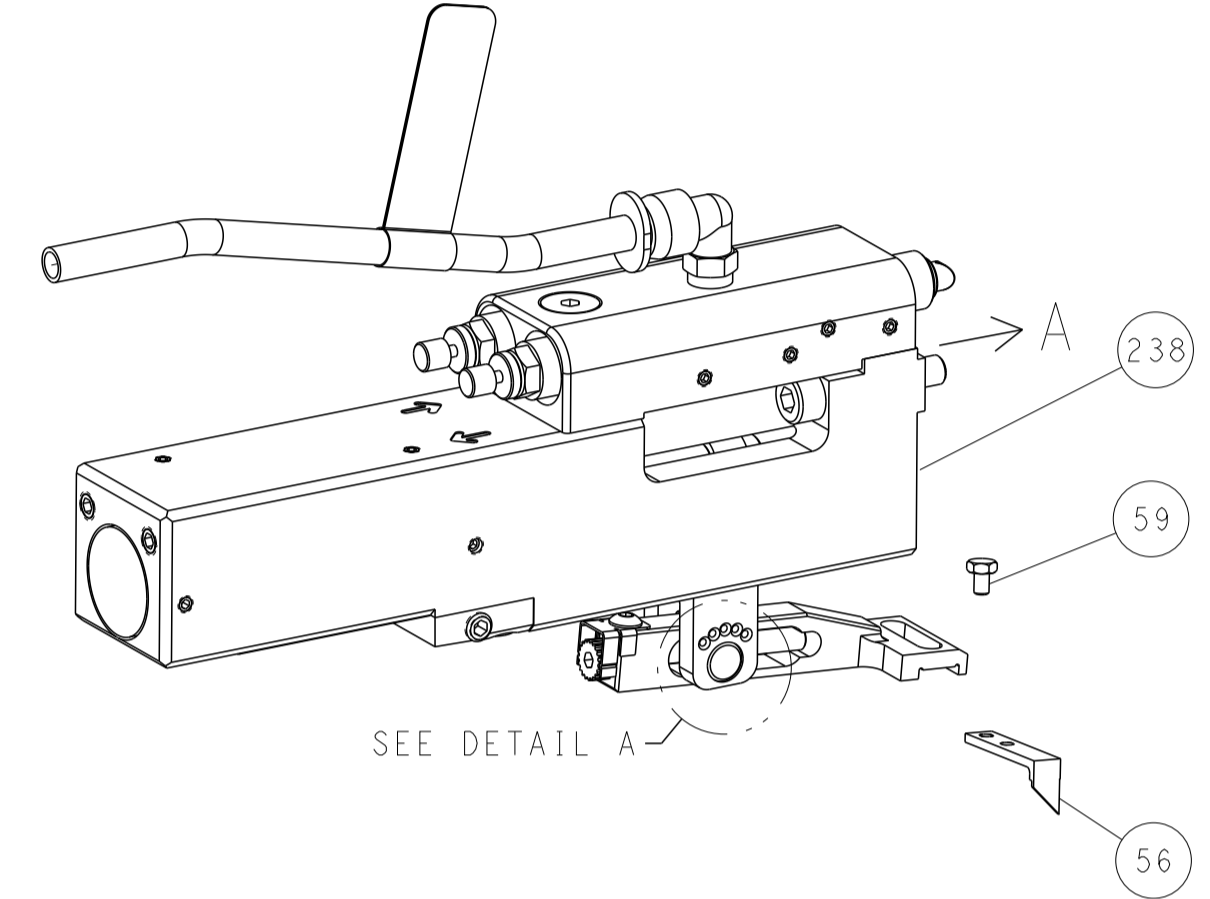
TE CONNECTIVITY	040CT2012	TE Connectivity
ELBROS	040CT2012	Harrisburg, PA 17105-3608
ELBIN	040CT2012	
M. CLIFFORD	040CT2012	
NAME	Ocean Side Feed Applicator	
SIZE	CAGE CODE	DRAWING NO
A1	00779	2151763
Customer Accessible Production Drawing	SCALE	1:2 SHEET 1 OF 4 REV D1

LOC	DIST	REVISIONS					
		P	LTN	DESCRIPTION	DATE	DWN	APVD
A	66	-	-	SEE SHEET 1	-	-	-

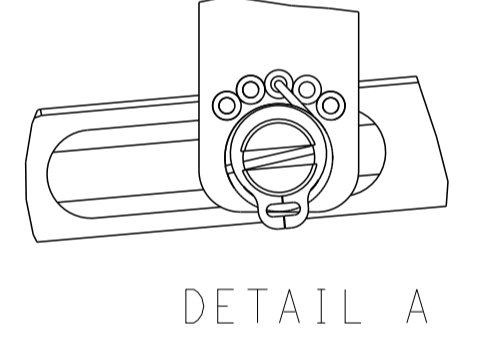
FEED TYPE MECHANICAL



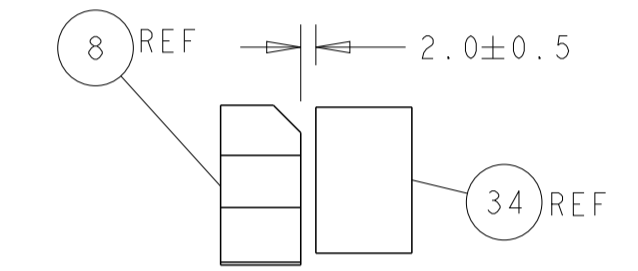
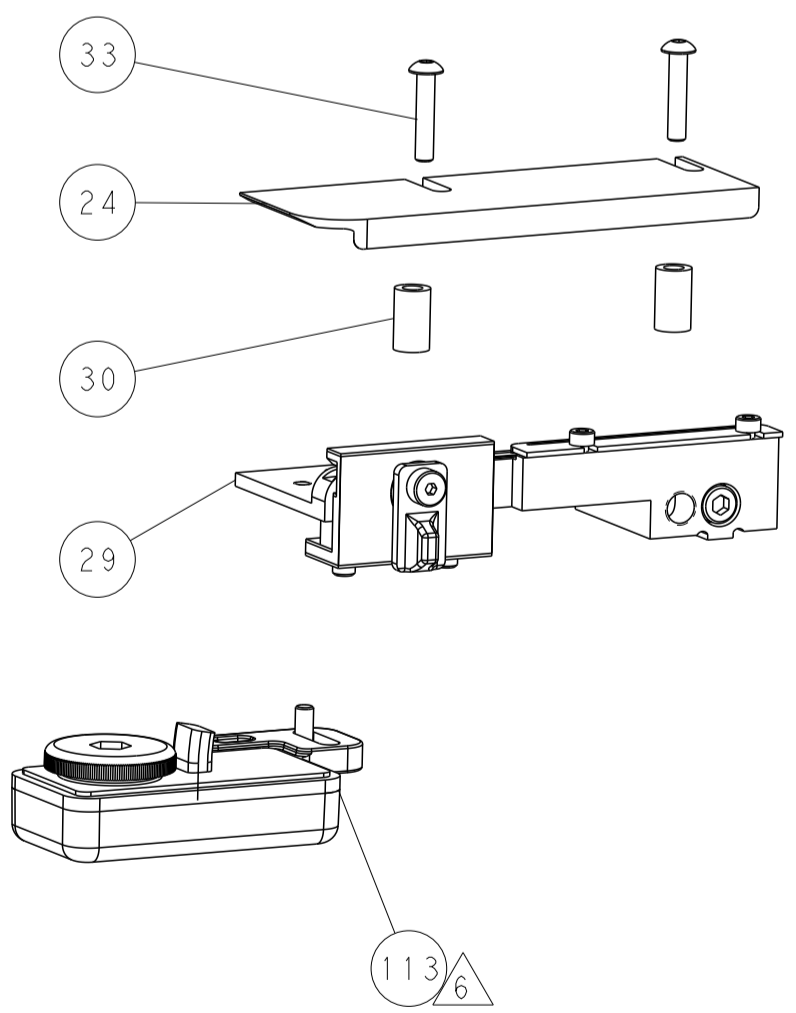
PNEUMATIC



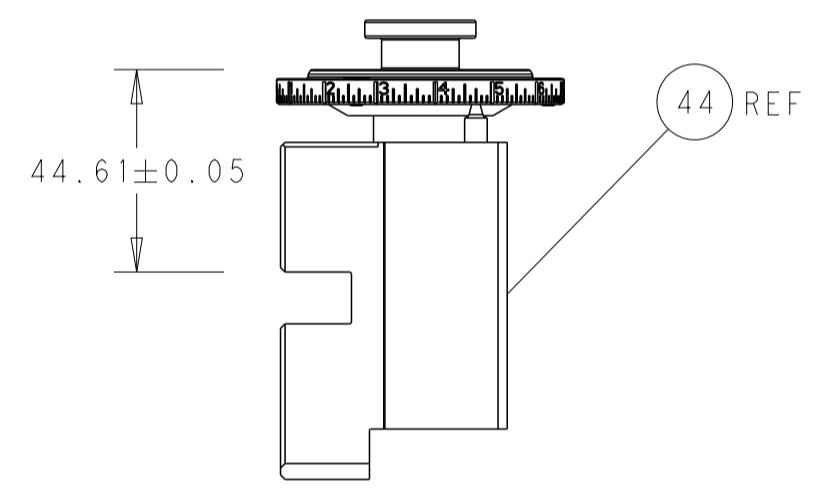
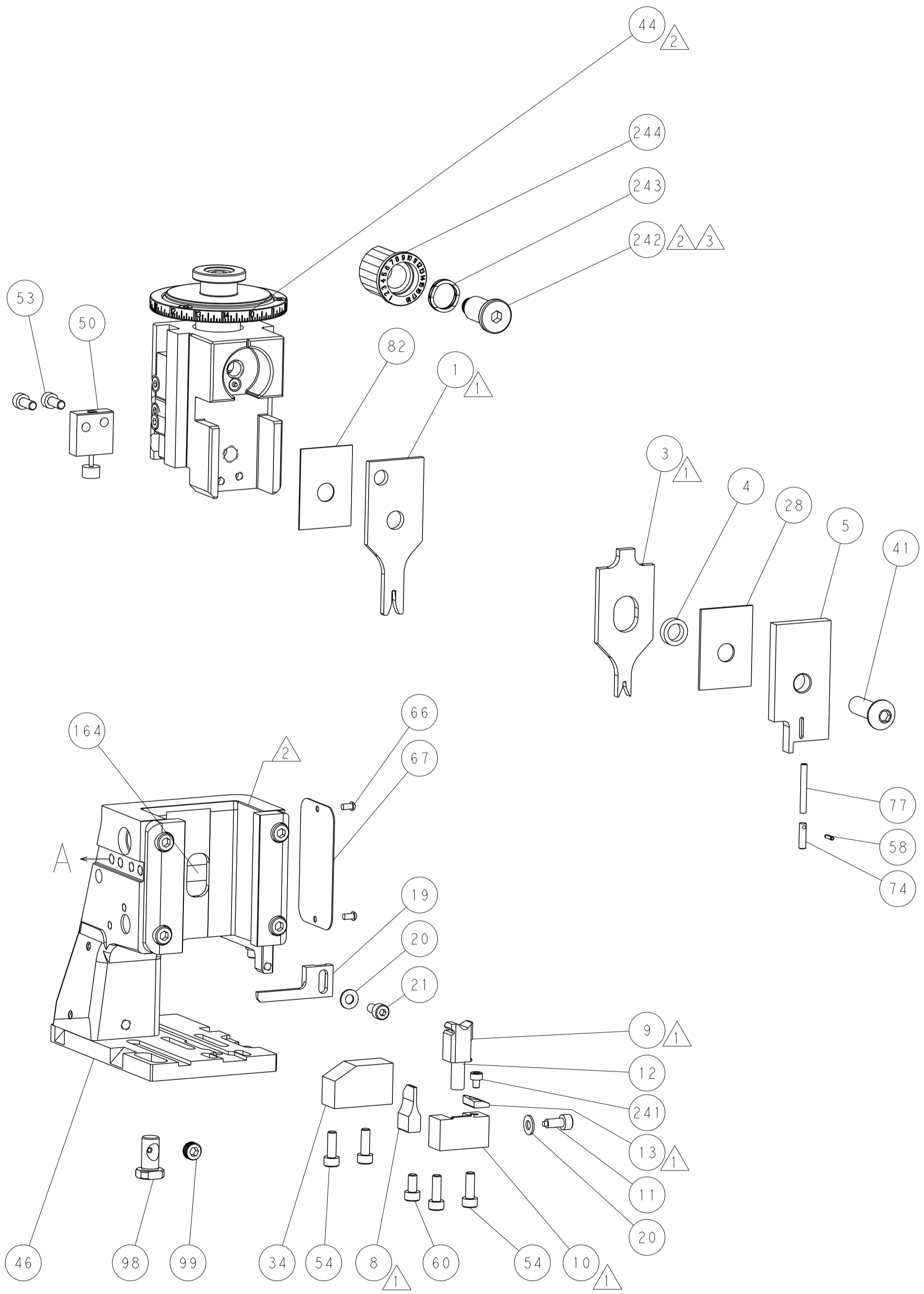
FEED SPRING SETTING POSITION (SHOWN FROM REAR SIDE)



DETAIL A

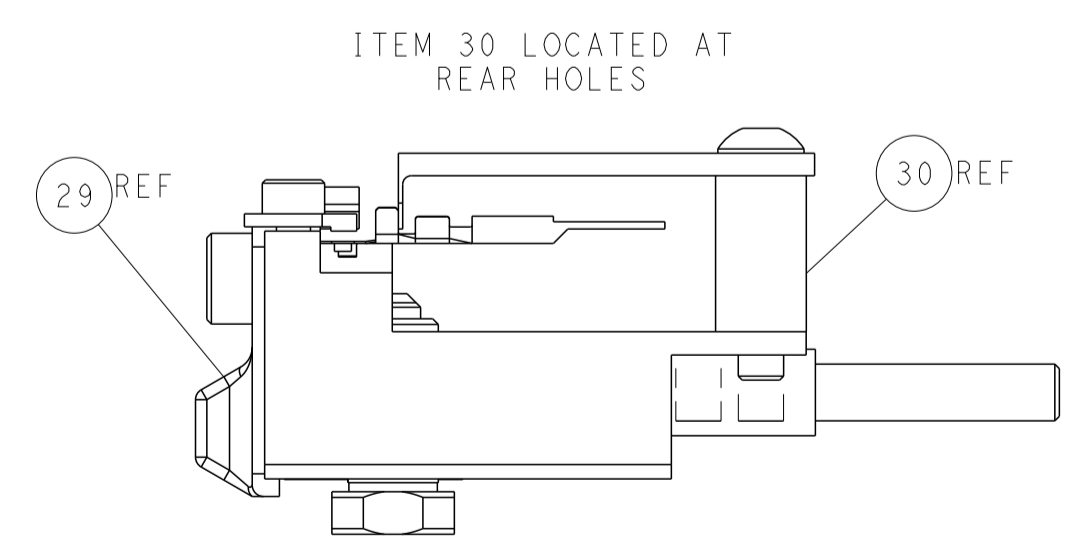
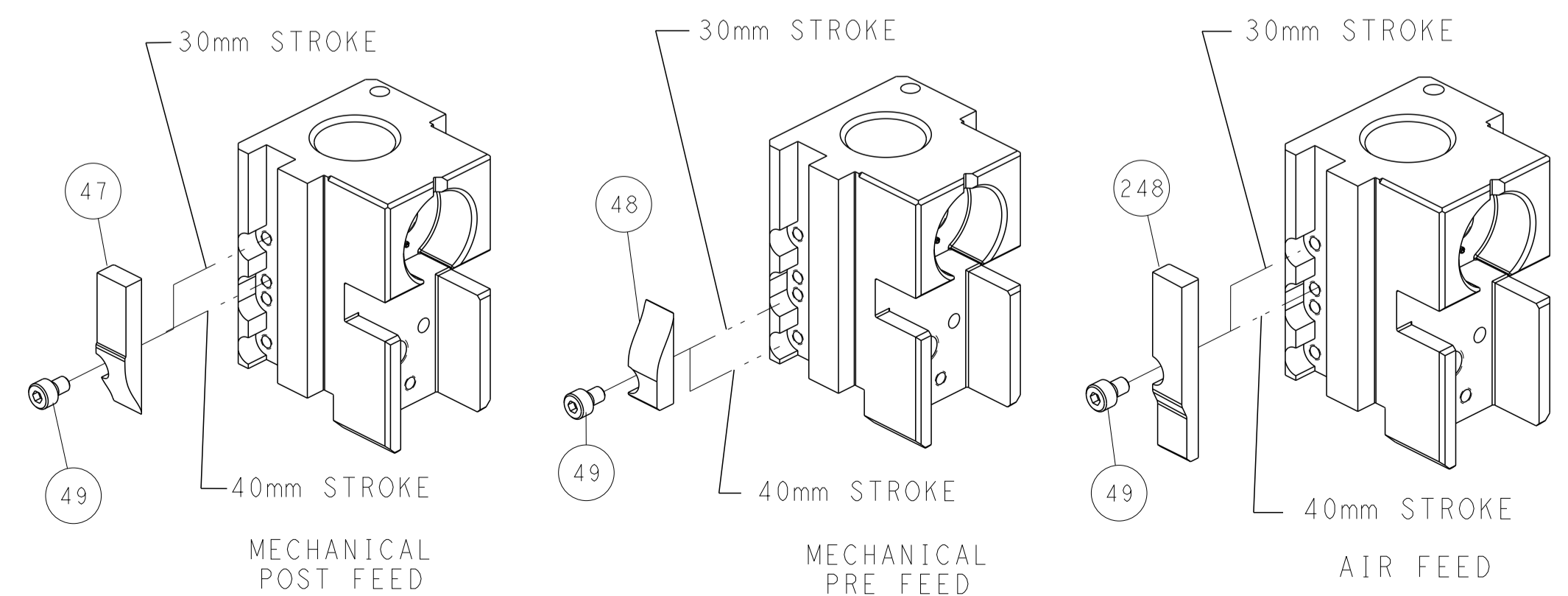


TERMINAL SUPPORT LOCATION



RAM SET-UP

CAM POSITIONS



FEED TRACK POSITION GUIDE BY INSULATION BARREL

ATLANTIC VERSION
 Shown on sheets 1 of 4 & 2 of 4
 (Pacific version shown on sheets 3 of 4 & 4 of 4)

<small>THIS DRAWING IS UNPUBLISHED. RELEASED FOR PUBLICATION BY TYCO ELECTRONICS CORPORATION. ALL RIGHTS RESERVED.</small>		DWN: 04OCT2012 CHK: T. ELBIN APVD: M. CLIFFORD PRODUCT SPEC: - APPLICATION SPEC: - WEIGHT: -	NAME: Ocean Side Feed Applicator SIZE: A1 CAGE CODE: 00779 DRAWING NO: 2151763 SCALE: 1:2 SHEET: 2 of 4 REV: D1	TE Connectivity Harrisburg, PA 17105-3608
DIMENSIONS: mm TOLERANCES UNLESS OTHERWISE SPECIFIED: 0 PLC ± 1 PLC ± 2 PLC ± 3 PLC ± 4 PLC ± ANGLES FINISH	DIMENSIONS: mm TOLERANCES UNLESS OTHERWISE SPECIFIED: 0 PLC ± 1 PLC ± 2 PLC ± 3 PLC ± 4 PLC ± ANGLES FINISH	MATERIAL: - FINISH: -	RESTRICTED TO: -	SHEETS 3 & 4 ARE NOT REQUIRED FOR ATLANTIC VERSION

PART NUMBER	REVISION	DESCRIPTION	FEED TYPE
2-2151763-1	D	FINE CRIMP HEIGHT ADJUST	MECHANICAL
2-2151763-2	D	FINE CRIMP HEIGHT ADJUST	PNEUMATIC
7-2151763-7	A	CRIMP TOOLING KIT	-

PACIFIC VERSION TERMINATOR
 INTERFACE ADAPTER



APPLICATOR DATA		
CRIMP	SIZE	TYPE
WIRE	1.57 mm [.062]	F
INSUL	1.57 mm [.062]	O

APPLICATOR INSTRUCTIONS
 408-35042

TERMINAL DATA: YAZAKI TERMINAL YAZAKI CRIMP SPECIFICATION			
TERMINAL NAME: 0.64 SYSTEM CONNECTOR - MALE TERMINAL			
WIRE STRIP LENGTH	INSULATION DIAMETER RANGE		
3.75-3.77 mm [.148-.148 IN]	Ø1.40-2.20 mm [.055-.087 IN]		
TERMINAL APPLICATION SPECIFICATION	(A)WA1675 Rev 01	-	-
TERMINALS APPLIED			
TE TERMINAL	YAZAKI TERMINAL	TE TERMINAL	YAZAKI TERMINAL
(A) 1949224-1	(A) 7114-4721-02		

TERMINAL DATA: YAZAKI TERMINAL YAZAKI CRIMP SPECIFICATION			
TERMINAL NAME: 0.64 SYSTEM CONNECTOR - FEMALE TERMINAL			
WIRE STRIP LENGTH	INSULATION DIAMETER RANGE		
3.75-3.77 mm [.148-.148 IN]	Ø1.40-2.20 mm [.055-.087 IN]		
TERMINAL APPLICATION SPECIFICATION	(B)WA1742 Rev 07	-	-
TERMINALS APPLIED			
TE TERMINAL	YAZAKI TERMINAL	TE TERMINAL	YAZAKI TERMINAL
(B) 1949220-1	(B) 7116-4721-02	(B) 1949220-2	(B) 7116-4721-08

WIRE SIZE	CRIMP HEIGHT mm [INCH]	CRIMP HEIGHT REFERENCE SETTING
0.85mm2	1.00 +/- 0.05 [.039 +/- .002]	7.9
0.50mm2	0.85 +/- 0.05 [.033 +/- .002]	9.5

WIRE SIZE	CRIMP HEIGHT mm [INCH]	CRIMP HEIGHT REFERENCE SETTING
0.85mm2	1.20 +/- 0.05 [.047 +/- .002]	3.0
0.75mm2	1.07 +/- 0.05 [.042 +/- .002]	4.3
0.50mm2	1.05 +/- 0.05 [.041 +/- .002]	4.5

- △ RECOMMENDED SPARE PARTS
- △ REFER TO SUPPLIED INSTRUCTION SHEET FOR CLEANING, LUBRICATION AND STORAGE OF APPLICATOR.
- △ APPLY PART NUMBER 2-23419-6 LOCTITE TO THREADS OF ITEM 242.
- △ CRIMP HEIGHT REFERENCE SETTING WAS THE SETTING USED WHEN THE APPLICATOR WAS QUALIFIED AT THE FACTORY. ADJUSTMENT MAY BE NECESSARY WHEN RUNNING APPLICATOR IN THE FIELD.
- 5. UNLESS SPECIFIED OTHERWISE TORQUE VALUES SHALL BE USED PER DOCUMENT, 101-35000.
- △ TERMINAL LUBRICANT IS RECOMMENDED.
- △ THE CUSTOMER ACKNOWLEDGES THAT THE TERMINAL MANUFACTURER'S CRIMP SPECIFICATIONS ARE UNKNOWN. IN ADDITION THE CUSTOMER ACKNOWLEDGES THAT TE CONNECTIVITY HAS CALCULATED CRIMP SPECIFICATIONS FOR THIS PRODUCT THAT MAY NOT MATCH THE TERMINAL MANUFACTURER'S SPECIFICATIONS. TE CONNECTIVITY USES ACCEPTED PRACTICES TO DESIGN TERMINATION TOOLING FOR NON-TE CONNECTIVITY PRODUCTS. HOWEVER, **TE CONNECTIVITY EXPRESSLY DISCLAIMS ANY AND ALL WARRANTIES THAT THE TOOLING WILL RELIABLY APPLY NON-TE CONNECTIVITY PRODUCTS, INCLUDING BUT NOT LIMITED TO IMPLIED WARRANTIES OF MERCHANTABILITY OR FITNESS FOR PARTICULAR PURPOSE. THE CUSTOMER ASSUMES ALL RESPONSIBILITY AND LIABILITY FOR THE PERFORMANCE OF TERMINATED ASSEMBLIES USING SUCH TOOLING.** THE CUSTOMER EXPRESSLY INDEMNIFIES TE CONNECTIVITY AND SHALL HOLD TE CONNECTIVITY HARMLESS FROM ALL CLAIMS, DEMANDS, LOSSES, EXPENSES AND LIABILITIES RESULTING FROM THE USE OF THIS TOOLING ON NON-TE CONNECTIVITY PRODUCTS.

*WARNING
 ON INSTALLATION, SET WIRE DISC TO CRIMP HEIGHT REFERENCE SETTING FOR LARGEST WIRE SIZE. CRIMP HEIGHT REFERENCE SETTINGS GREATER THAN THE VALUE SHOWN MAY CAUSE DAMAGE TO THE CRIMP TOOLING, REFER TO THE INSTRUCTION SHEET FOR PROPER SETUP AND ADJUSTMENTS.

PACIFIC VERSION
 Shown on sheets 3 of 4 & 4 of 4
 (Atlantic version shown on sheets 1 of 4 & 2 of 4)

LOC	DIST	REVISIONS					
A	66	P	LTN	DESCRIPTION	DATE	DWN	APVD
-	-	-	-	SEE SHEET 1	-	-	-

-	1	1	2119082-8	CAM, SNAIL, INSULATION ADJUSTMENT	244
-	1	1	2079764-1	WASHER, WAVE SPRING, CREST-TO-CREST	243
△	-	1	2119083-1	RETAINER, INSULATION DIAL	242
-	1	1	7-18023-7	SCR, SKT HD CAP M3 X 4.0	241
-	-	1	2119580-1	MECHANICAL FEED ASSEMBLY	239
-	1	-	2844940-1	AIR FEED MODULE	238
-	REF	REF	994970-2	COUNTER, MAGNETIC	164
-	1	-	2119641-2	FEED CAM, AIR FEED	151
-	1	1	2168083-8	SCR, SKT HD CAP, RoHS, M4 X 16	144
-	4	4	2168083-9	SCR, SKT HD CAP, RoHS, M4 X 20	143
-	-	1	2119653-2	FEED CAM, POST FEED	142
-	1	1	1-1803583-0	APPLICATOR BASIC ASSEMBLY, SF	141
-	1	1	1803516-1	RAM ASSEMBLY, SF PACIFIC	140
△	-	1	2119955-1	ASSY, LUBRICATOR, SIDE FEED	113
-	1	1	2844908-1	SCREW, LOCKING	99
-	1	1	2844907-1	POST, LOCKING	98
-	1	1	455888-5	SPACER, CRIMPER	82
-	1	1	5-547505-2	SPRING, COMPRESSION	77
-	1	1	854769-4	HOLDER, INS	74
-	1	1	1803607-3	DOCUMENTATION PACKAGE	71
-	1	1	2119740-1	TAG, IDENTIFICATION	67
-	2	2	2168078-1	SCREW, DRIVE, RH, RoHS, 2 x .188	66
-	1	1	5-18022-5	SCR, HEX HD CAP, M4 X 6.0	59
-	1	1	21028-2	PIN, SLOTTED SPRING .062 X .250	58
-	1	1	1338685-1	PAWL, FEED	56
-	2	2	1-2168083-0	SCR, SKT HD CAP, RoHS, M4 X 10	53
-	1	1	1803382-6	HOLD DOWN, SPRING LOADED	50
-	1	2	18023-9	SCR, SKT HD CAP M4 X 6.0	49
-	-	1	2119652-1	FEED CAM, PRE FEED	48
-	1	1	1803602-1	SCR, BHSC, RoHS (M8 X 25)	41
-	1	1	1752356-3	SUPPORT, TERMINAL	34
-	2	2	2079383-5	SCR, BHSC, RoHS (M4 X 20)	33
-	2	2	2-2844962-4	SPACER, CYLINDRICAL, STRIP GUIDE	30
-	1	1	2844992-2	ASSEMBLY, STRIP GUIDE	29
-	1	1	1-455888-0	SPACER, CRIMPER	28
-	1	1	240792-1	DRAG, TERMINAL	25
-	1	1	1320928-6	STRIP GUIDE	24
-	1	1	2168083-2	SCR, SKT HD CAP, RoHS, M4 X 8.0	21
-	2	2	1-18028-2	WASHER, FLAT, REG M4	20
-	1	1	2119533-1	STRIPPER, SIDE FEED	19
△	-	1	2119806-1	INSERT, SHEAR	13
-	1	1	3-22280-3	SPRING, COMPRESSION	12
-	1	1	1-356885-4	STOP, SHEAR	11
△	-	1	2119805-1	SHEAR HOLDER, FRONT	10
△	-	1	1803095-1	FLOATING SHEAR, FRONT	9
△	1	1	1-1633932-5	ANVIL, COMBINATION	8
-	-	-	-	-	7
-	-	-	-	-	6
-	1	1	2119780-2	DEPRESSOR, SHEAR	5
-	1	1	3-238011-1	BLOCK, CRIMPER SPACER	4
△	1	1	1-1803019-3	CRIMPER, INSULATION O	3
-	-	-	-	-	2
△	1	1	1-546403-6	CRIMPER, WIRE PREMIUM	1

DIMENSIONS:		TOLERANCES UNLESS OTHERWISE SPECIFIED:		MATERIAL:		FINISH:		WEIGHT:		SCALE:	
mm	0 PLC ±	1 PLC ±	2 PLC ±	3 PLC ±	4 PLC ±	ANGLES	FINISH			1:2	SHEET 3 OF 4

ITEM NO	PART NO	DESCRIPTION
-77	-22	-21

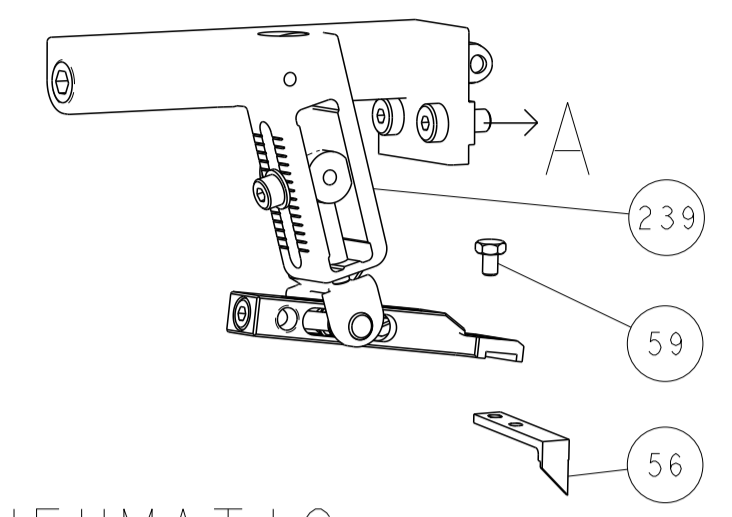
DWN	EL GROSS	04OCT2012
CHK	T. ELBIN	04OCT2012
APVD	M. CLIFFORD	04OCT2012

NAME	Ocean Side Feed Applicator	
SIZE	CAGE CODE	DRAWING NO
A1	00779	2151763

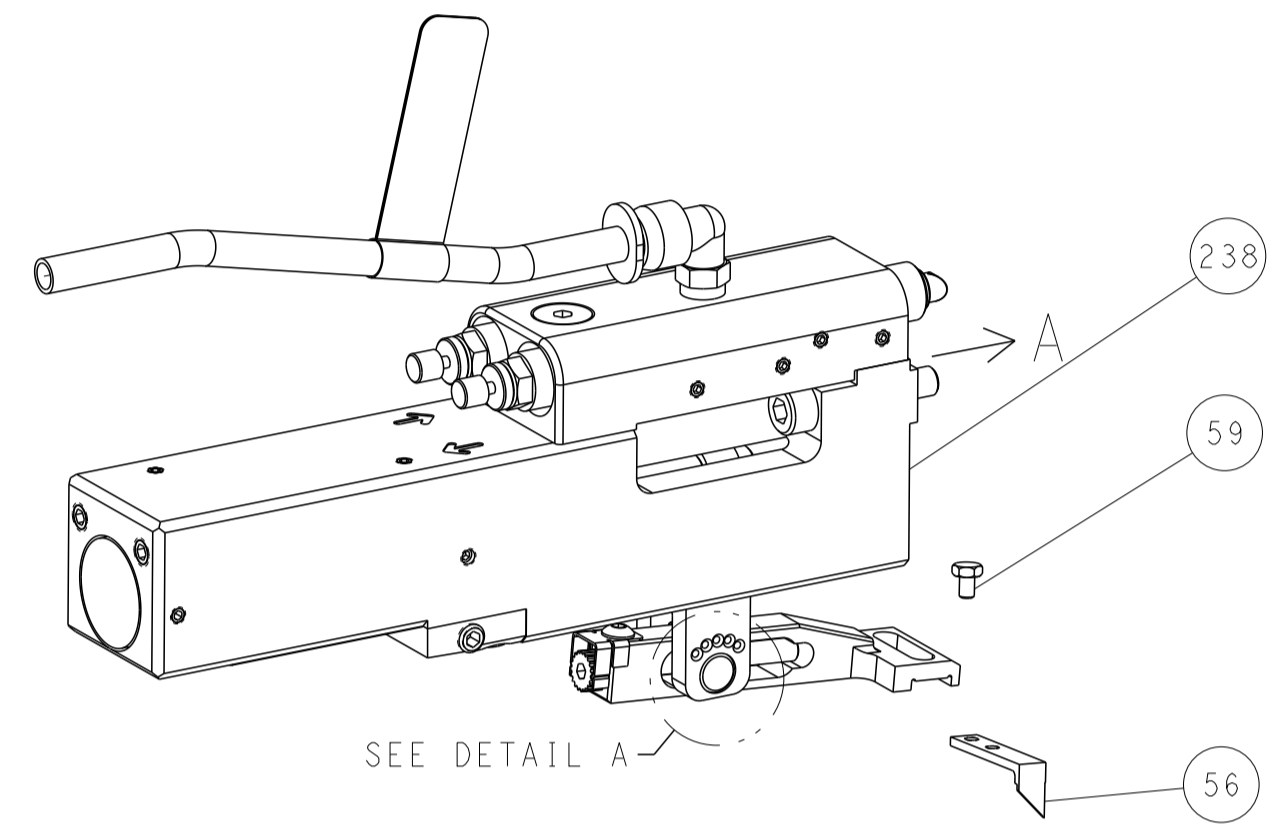
Customer Accessible Production Drawing

LOC	DIST	REVISIONS					
A	66	P	LTN	DESCRIPTION	DATE	DWN	APVD
		-		SEE SHEET 1			

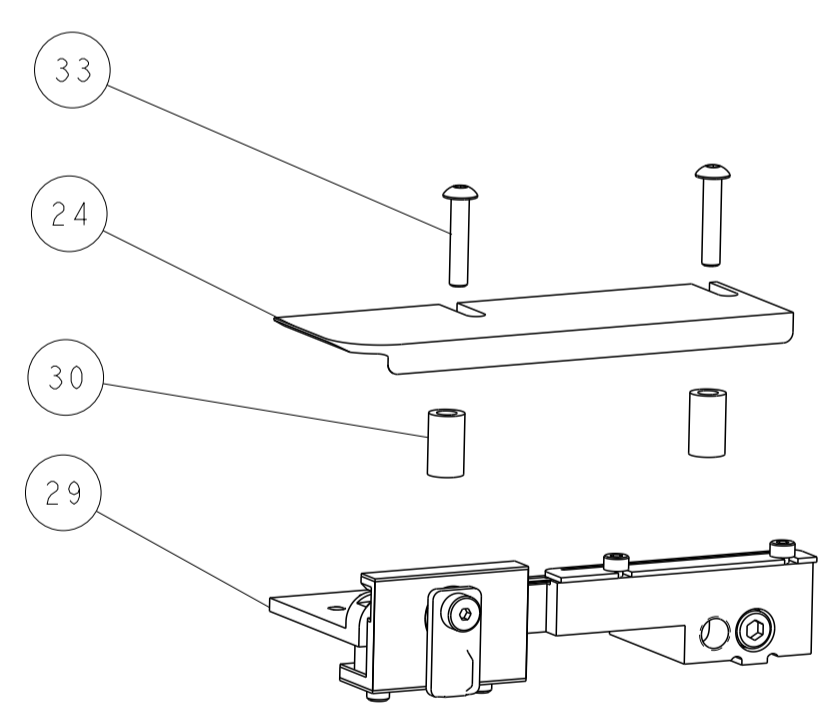
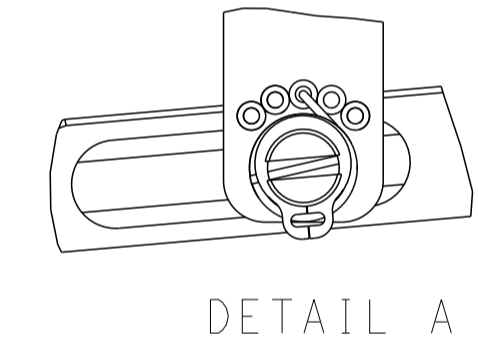
FEED TYPE MECHANICAL



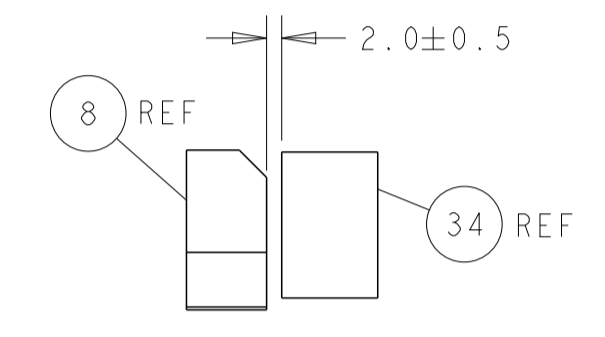
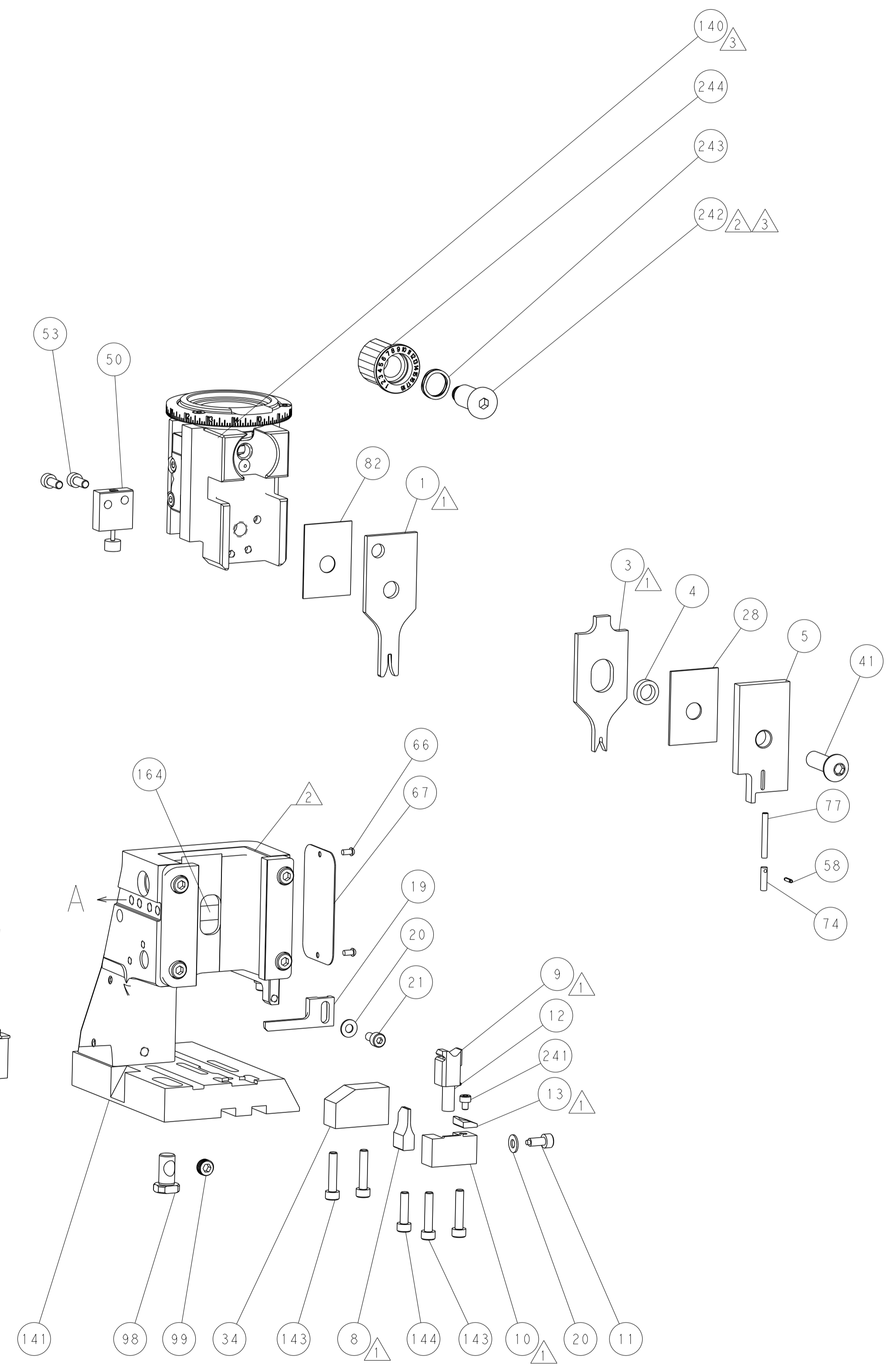
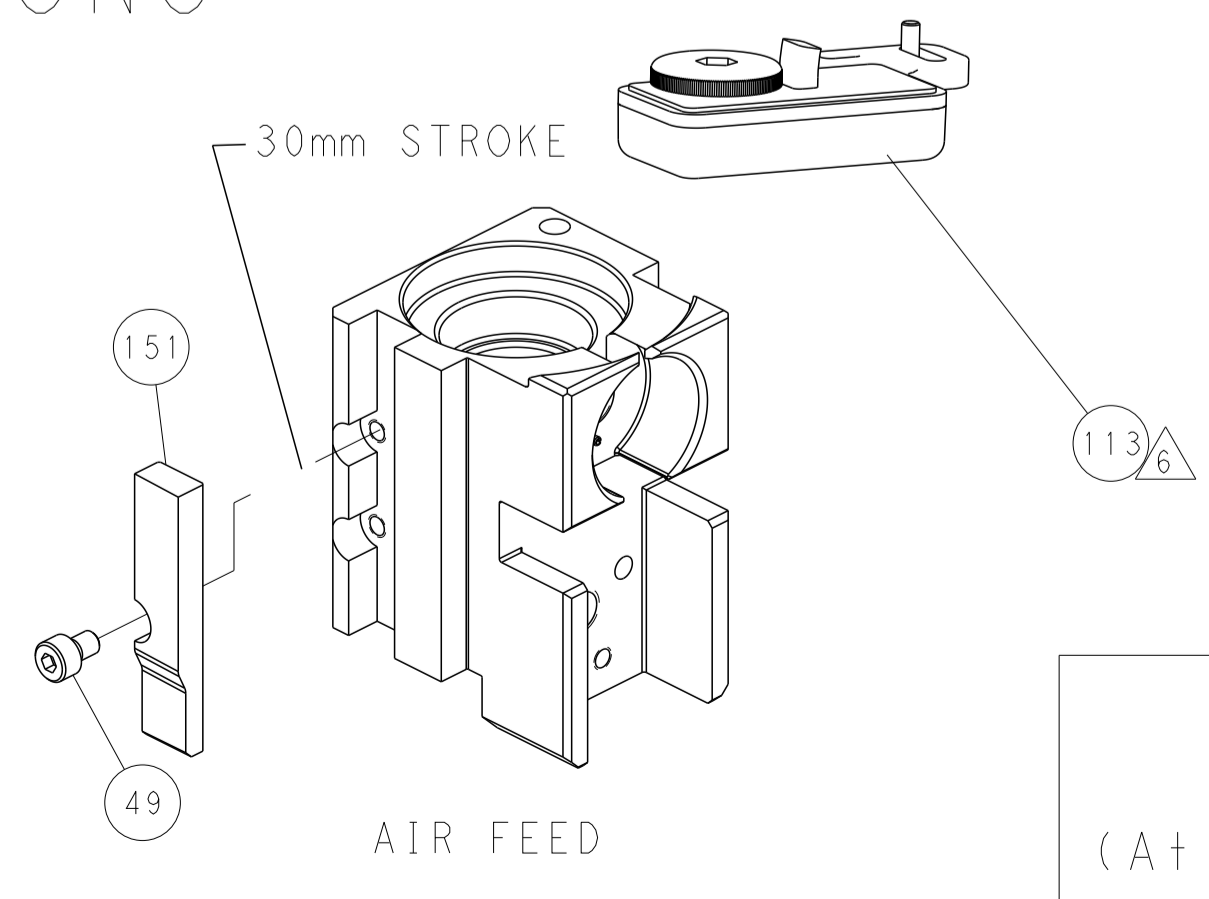
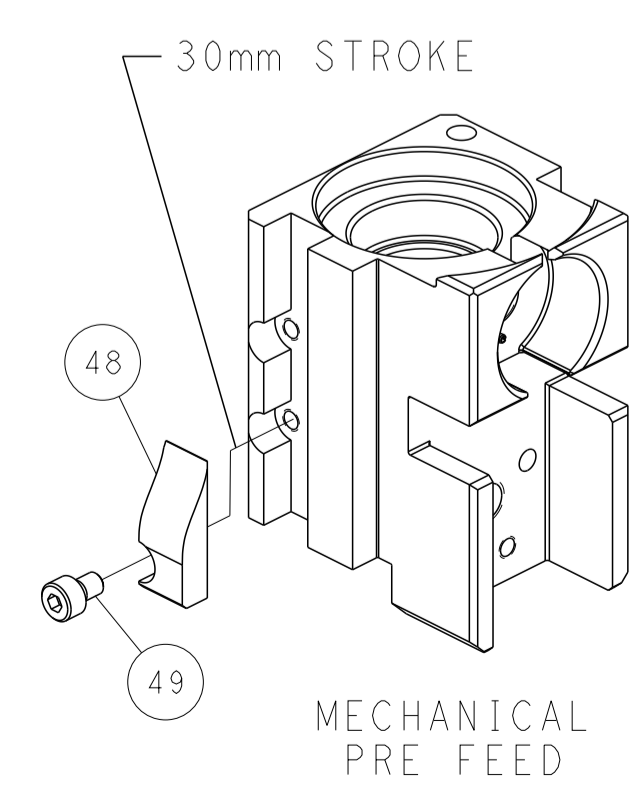
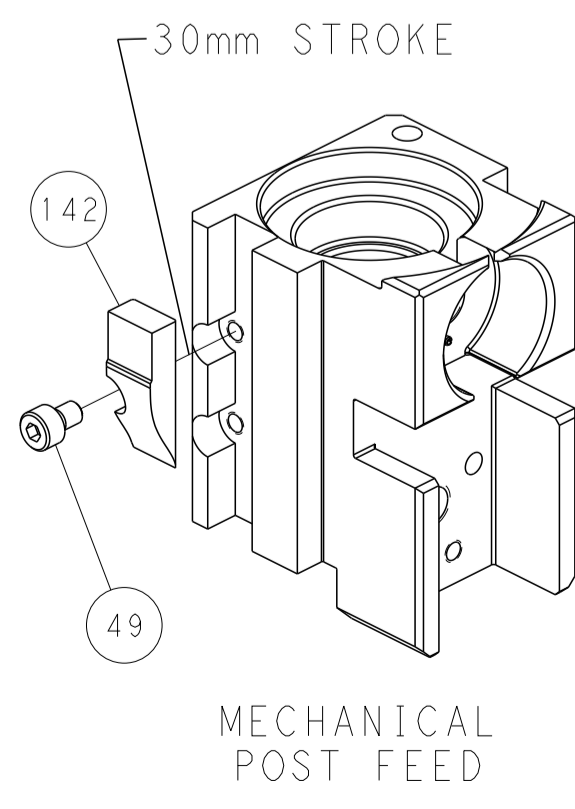
PNEUMATIC



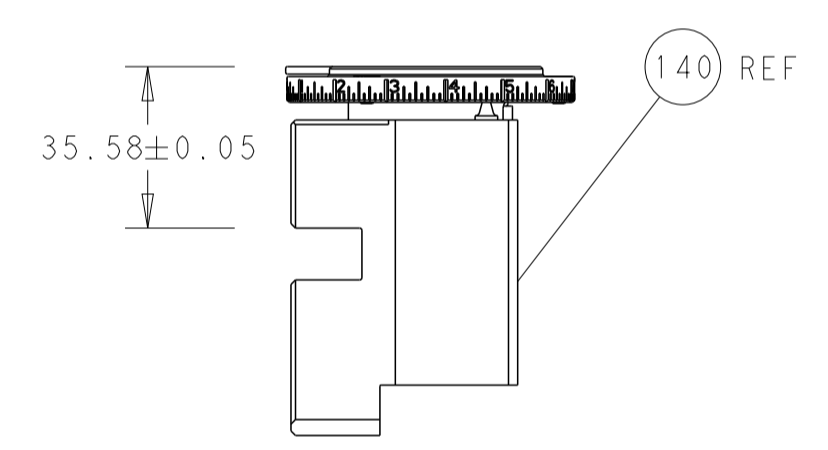
FEED SPRING SETTING POSITION (SHOWN FROM REAR SIDE)



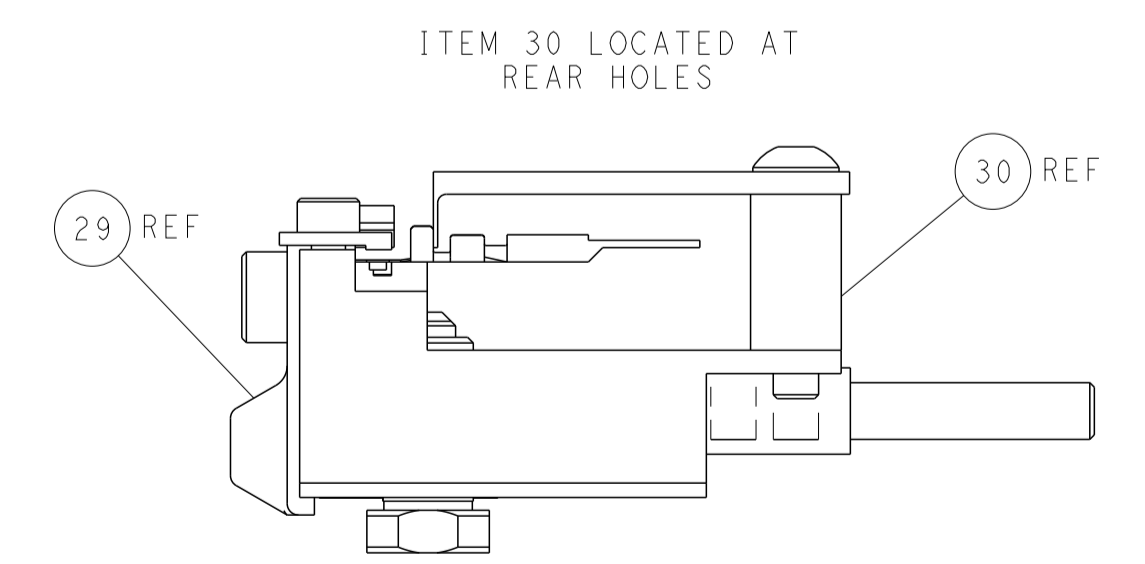
CAM POSITIONS



TERMINAL SUPPORT LOCATION



RAM SET-UP



FEED TRACK POSITION GUIDE BY INSULATION BARREL

PACIFIC VERSION
 Shown on sheets 3 of 4 & 4 of 4
 (Atlantic version shown on sheets 1 of 4 & 2 of 4)

<small>THIS DRAWING IS UNPUBLISHED. RELEASED FOR PUBLICATION. IT IS THE PROPERTY OF TYCO ELECTRONICS CORPORATION. IT IS TO BE RETURNED TO COMPANY FOR CONTROL AND INSPECTING ORGANIZATION SHOULD BE CONTACTED FOR THE LATEST REVISION.</small>		DWN: 04OCT2012 EL_GROSS: 04OCT2012 CHG: T.ELBIN APVD: M. CLIFFORD PRODUCT SPEC: APPLICATION SPEC: MATERIAL: FINISH:	NAME: Ocean Side Feed Applicator SIZE: A1 CAGE CODE: 00779 DRAWING NO: 2151763 SCALE: 1:2 SHEET: 4 OF 4 REV: 1	RESTRICTED TO:
DIMENSIONS: mm TOLERANCES UNLESS OTHERWISE SPECIFIED: 0 PLC ± 1 PLC ± 2 PLC ± 3 PLC ± 4 PLC ± ANGLES ± FINISH:		DATE: 04OCT2012 NAME: M. CLIFFORD DRAWING NO: 2151763 SCALE: 1:2 SHEET: 4 OF 4 REV: 1	CUSTOMER ACCESSIBLE PRODUCTION DRAWING	SHEETS 1 & 2 ARE NOT REQUIRED FOR PACIFIC VERSION