

REV. A	SHEET 1 OF 2	DOCUMENT NO. 58-570120/129
REVISIONS		
LTR	DESCRIPTION	DATE
A	INITIAL RELEASE	

58-570120/129

SHEET 1 OF 2

REV. A

C

B

A

D

C

VERSION 2

REVISION A

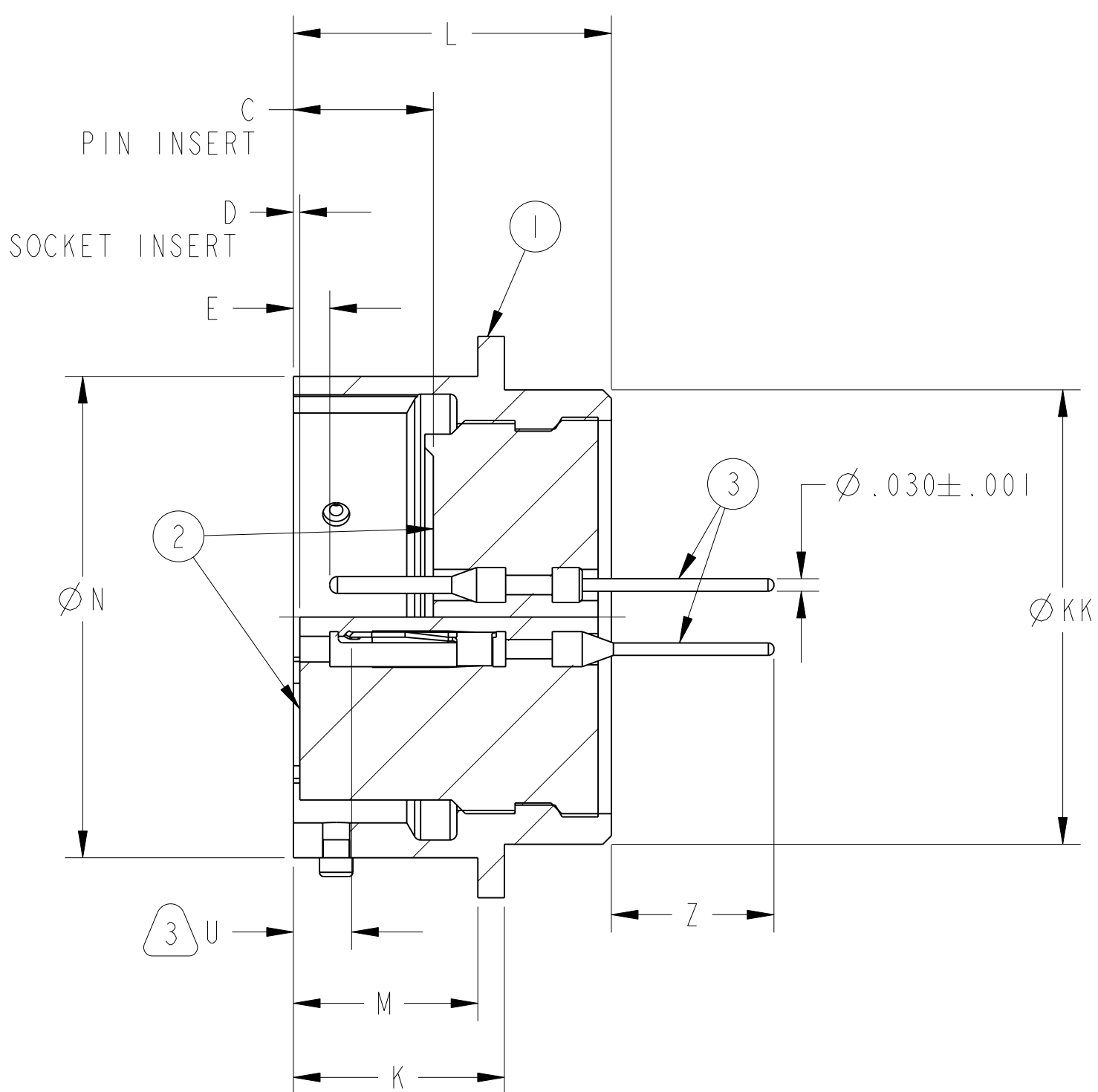
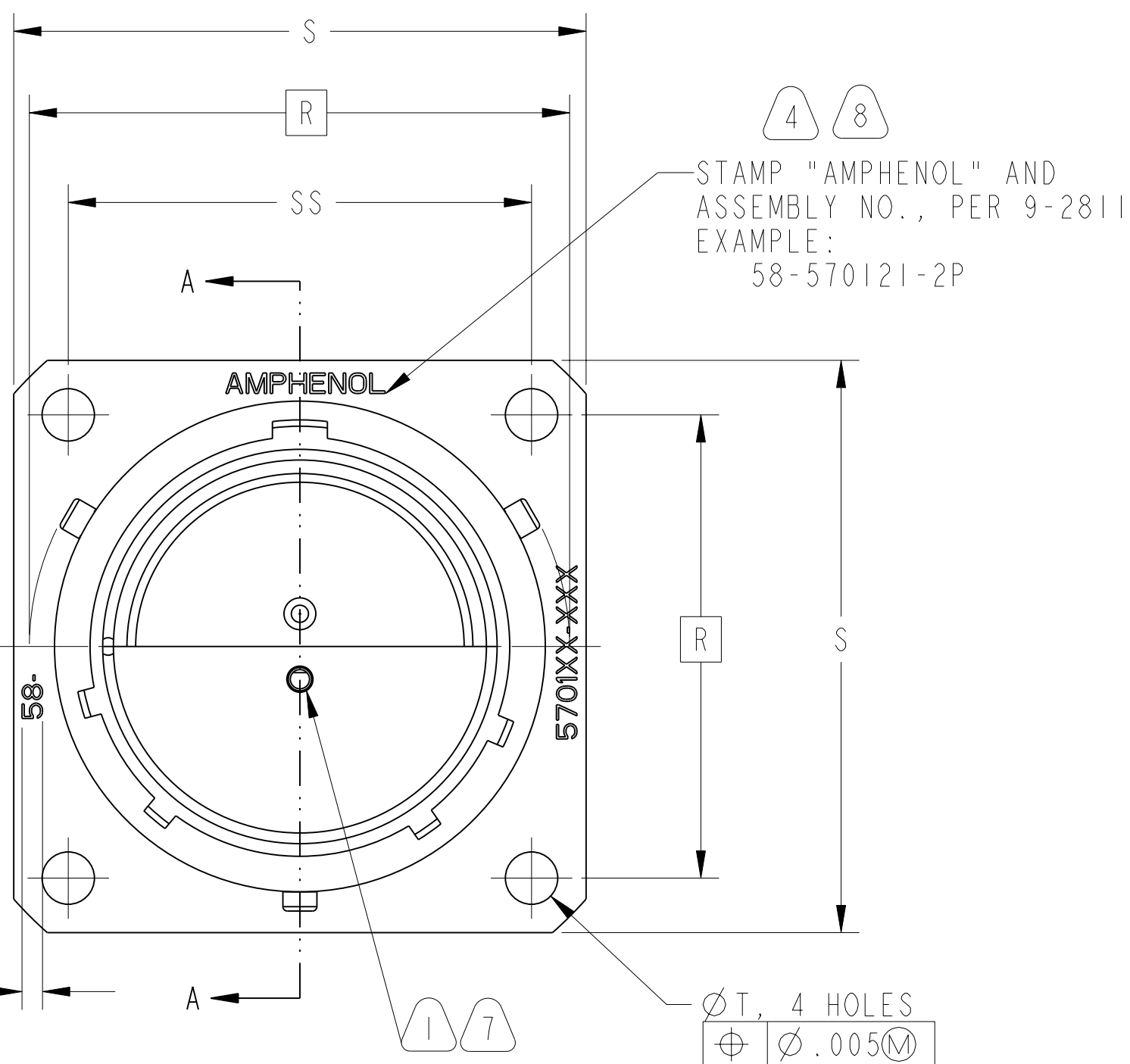
RELEASE STATE Released

REV. A

SHEET 1 OF 2

58-570120/129

REV. A



SEE SHEET 2.

**NOTES:**

THE USE OF THIS DOCUMENT IS UNLIMITED. HOWEVER, DOCUMENTS REFERENCED HEREON MAY CONTAIN LIMITED RIGHTS DATA.

RELEASED / Oct . 03 2003, 09:52 AM

DOCUMENT NO. 58-570120/129

SHEET 1 OF 2

REV. A

PRO/ENGINEER INFORMATION

Pro/e Model Used: 58-570120.129.ASSEM

Drawing Name: 58-570120.129

N/A

NEXT ASSEMBLY

UNLESS OTHERWISE SPECIFIED	SPECIFICATIONS
LINEAR DIMENSIONS ARE IN INCHES TOLERANCES: .XXXX = ±.0005 ANGLES= ±2° .XXX = ±.010 .XX = ±.03 .X = ±.1	MATERIAL SPEC. N/A
DIM. & TOL. PER ASME Y14.5M; DRM PER MIL-DTL-31000; OTHER Amphenol Stds. PER 9-3800	PROCESS SPEC. SEE NOTE 10
LEGENDS: = FLAG NOTE CALL OUT REFERENCE ONLY	

POS	QTY	PART NUMBER	DESCRIPTION	NOTE
3		SEE NOTE 9	CONTACT	9
2	1	10-252806/824-( )	INSERT	9
1	1	10-150902-XXX	SHELL	

APPROVALS		DATE	PARTS LIST		
PREPARED BY	J. BORDEAU	01-0c1-03	<b>AMPHENOL CORPORATION</b> 40-60 DELAWARE AVENUE SIDNEY, N.Y. 13858		
ENGINEER IN CHARGE	R. BARNES		RECEPTACLE, ELECTRICAL CONNECTOR, TYPE PT-A( ) (027)FB, BLACK ZINC CONDUCTIVE PLATE		
DESIGN MANAGER	D. GALLUSSER		SIZE C	CAGE CODE 77820	DOCUMENT NO. 58-570120/129
DESIGN ACTIVITY GROUP	C & I		SCALE: 3.0	REF. 71-570120/129	SHEET 1 OF 2

58-570120/129

SHEET 2 OF 2

REV. A

C

B

A

FORMAT: C-U-E-1

ASSEMBLY NUMBER	PT NUMBER	DIMENSIONS													
		C +.010 -.025	D +.010 -.025	E +.010 -.020	K +.021 -.010	L ±.031	M +.010 -.000	ØN +.001 -.005	R (TP)	S +.011 -.010	ØT ±.005	U MAX	Z +.040 -.050	ØKK +.011 -.000	ØSS +.000 -.016
58-570120-( )	02A-06-( )(027)							.348	.469	.688				.312	.439
58-570121-( )	02A-08-( )(027)							.473	.594	.812				.438	.563
58-570122-( )	02A-10-( )(027)							.590	.719	.938				.562	.680
58-570123-( )	02A-12-( )(027)	.337	.025	.085	.493	.743	.431	.750	.812	1.031		.153	.380	.688	.859
58-570124-( )	02A-14-( )(027)							.875	.906	1.125	.120			.812	.984
58-570125-( )	02A-16-( )(027)							1.000	.969	1.219				.938	1.108
58-570126-( )	02A-18-( )(027)							1.125	1.062	1.312				1.062	1.233
58-570127-( )	02A-20-( )(027)				.650	.994	.556	1.250	1.156	1.438				1.188	1.358
58-570128-( )	02A-22-( )(027)	.399	.087	.147				1.375	1.250	1.562		.215	.286	1.312	1.483
58-570129-( )	02A-24-( )(027)				.683	1.027	.589	1.500	1.375	1.688	.147		.253	1.438	1.610

5

10. PROCESS SPEC:  
TEST 9-3353-8  
ASSY 9-3443-6, 9-2811, 9-2437-1
9. SEE SEPERATE PARTS LIST FOR COMPONENT PART NUMBERS AND QUANTITIES.
8. SEE WORK ORDER FOR PERMISSIBLE ADDITIONAL OR ALTERNATE STAMPING.
7. FOR CONTACT ARRANGEMENTS, SEE DRAWINGS L-15206-( ) THRU L-15250-( ).
6. UNITS ILLUSTRATED MEET THE APPLICABLE REQUIREMENTS OF MIL-C-26482.
5. TO COMPLETE ASSEMBLY NUMBER AND PT NO. ADD APPLICABLE INSERT ARRANGEMENT SUFFIX TO BASE NUMBERS LISTED ABOVE PER 9-2437-1.
4. STAMPING MAY BE MADE ON EITHER SIDE OF FLANGE (ONE SIDE ONLY).
3. DISTANCE BETWEEN END OF SHELL AND THE POINT AT WHICH A GAGE PIN, HAVING THE SAME BASIC DIAMETER AS THE MATING CONTACT AND A SQUARE FACE, ENGAGES SOCKET CONTACT SPRING.
2. FOR MATING PLUG ASSEMBLIES, SEE DRAWING 58-146606/50 AND OTHERS.
1. INSERTS AND CONTACTS MUST NOT BE REMOVED.

NOTES:

THE USE OF THIS DOCUMENT IS UNLIMITED. HOWEVER, DOCUMENTS REFERENCED HEREON MAY CONTAIN LIMITED RIGHTS DATA.

RELEASED / Oct . 03 2003, 09:52 AM

58-570120/129 SHEET 2 OF 2 REV. A

SIZE C	CAGE CODE 77820	DOCUMENT NO. 58-570120/129	REV. A
SCALE: 3.0		REF: 71-570120/129	SHEET 2 OF 2

58-570120/129 SHEET 2 OF 2 REV. A RELEASED