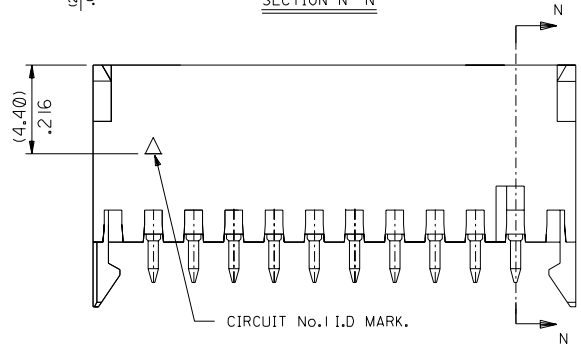
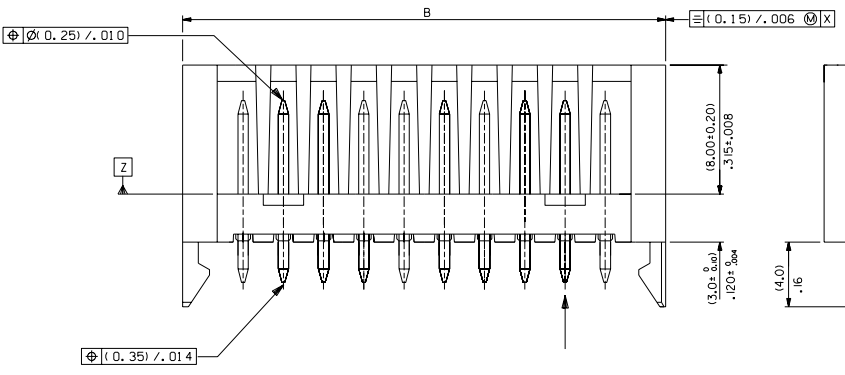
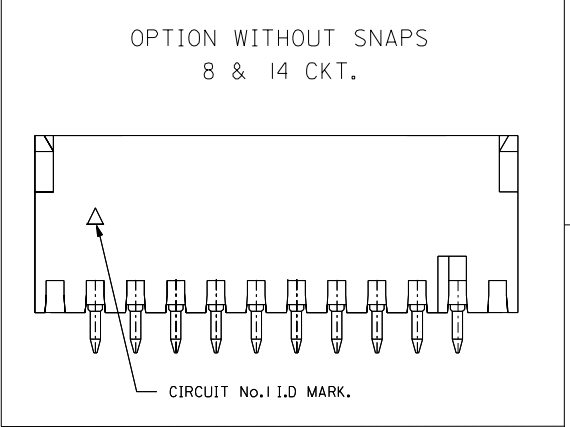
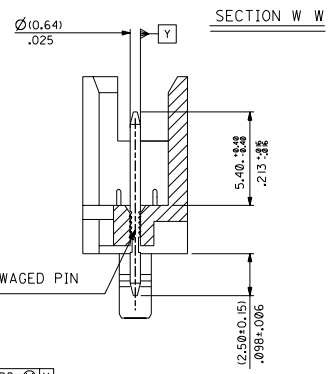
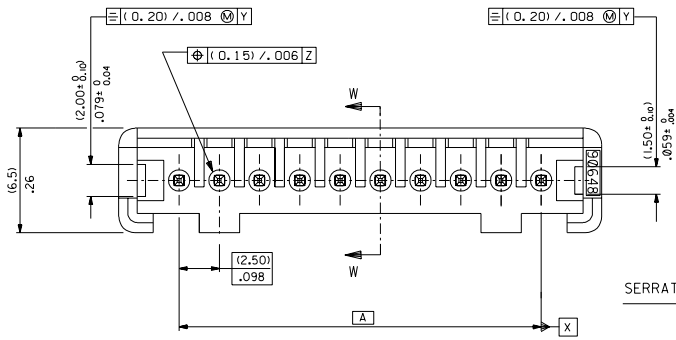
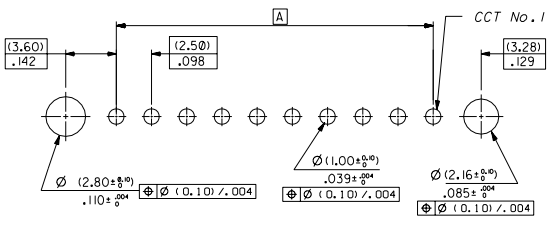


PART NO. SEE CHART
 DWG. NO. SDA-90648



RECOMMENDED P.C.B. HOLE LAYOUT

PCB LAYOUT : COMPONENT SIDE
 PCB THICKNESS 1.50 TO 1.60.



NOTES :

1. MATERIAL
 HEADER (2-6 CIRCUIT) : POLYESTER, UL 94V-0, G.E VALOX 310-SE0.
 HEADER (7-20 CIRCUIT) : 15% GF NATURAL (WHITE) POLYESTER, RATED UL 94V-0
 PINS: BRASS, PLATING: (3um)/.118uin MIN. TIN
 TO 95/5 OVER (2um)/.078uin MIN. COPPER OR NICKEL.
2. FOR ALL UNSTATED DIMENSIONS SEE SHEET 2.
3. PIN PUSH OUT FORCE 35N MIN. IN DIRECTION OF ARROW Z.
4. OPTIONS ADDED: 8 & 14ckt. WITHOUT SNAPS.

REV	DESCRIPTION	QUALITY SYMBOLS
	MAJOR CRITICAL	

GENERAL TOLERANCES: (UNLESS SPECIFIED)	
mm	INCH
4 PLACES ±0.	±.
3 PLACES ±0.	±.006
2 PLACES ±0.015	±.008
1 PLACE ±0.025	±.
ANGULAR: ± 2°	
DRAFT WHERE APPLICABLE MUST REMAIN WITHIN DIMENSIONS	

SCALE 5:1	DESIGN UNITS <input type="checkbox"/> mm <input type="checkbox"/> INCH
DRAWN BY & DATE POB 13/10/90	
CHECKED BY & DATE BMAGUIRE 13/10/90	
APPROVED BY & DATE BMAGUIRE 13/10/90	
CAD FILENAME S90648X1.DGN	

DIMENSIONS: <input checked="" type="checkbox"/> mm <input type="checkbox"/> INCH <input type="checkbox"/> mm <input type="checkbox"/> ONLY		SHT 2	REV C
THIRD ANGLE PROJECTION			
TITLE: 2.5mm PITCH P.C.B. HEADER ASSEMBLY BOARD TO BOARD			
MOLEX INCORPORATED			
MATERIAL NO. SEE CHART		DRAWING NO. SDA-90648	
SHEET NO. 1 OF 2		SIZE B	

	10	9	8	7	6	5	4	3	2	1																																																																																				
F	<table border="1"> <tr> <td>PART NO. SEE CHART</td> <td colspan="9">SDA-90648</td> </tr> <tr> <td>DWG. NO.</td> <td colspan="9"></td> </tr> </table>										PART NO. SEE CHART	SDA-90648									DWG. NO.																																																																									
PART NO. SEE CHART	SDA-90648																																																																																													
DWG. NO.																																																																																														
E	<table border="1"> <thead> <tr> <th>CCT SIZE</th> <th>PART NUMBER WITH SNAP-IN LATCHES</th> <th>A</th> <th>B</th> </tr> <tr> <td></td> <td></td> <td></td> <td>± 0.25 0.010</td> </tr> </thead> <tbody> <tr><td>■</td><td>90648-1002</td><td>(2.50)/.098</td><td>(10.00)/.394</td></tr> <tr><td>■</td><td>-1003</td><td>(5.00)/.197</td><td>(12.50)/.492</td></tr> <tr><td>■</td><td>-1004</td><td>(7.50)/.295</td><td>(15.00)/.591</td></tr> <tr><td>■</td><td>-1005</td><td>(10.00)/.394</td><td>(17.50)/.689</td></tr> <tr><td>■</td><td>-1006</td><td>(12.50)/.492</td><td>(20.00)/.787</td></tr> <tr><td>■</td><td>-1007</td><td>(15.00)/.591</td><td>(22.50)/.886</td></tr> <tr><td>■</td><td>-1008</td><td>(17.50)/.689</td><td>(25.00)/.984</td></tr> <tr><td>■</td><td>-1009</td><td>(20.00)/.787</td><td>(27.50)/1.083</td></tr> <tr><td>10</td><td>-1010</td><td>(22.50)/.886</td><td>(30.00)/1.181</td></tr> <tr><td>11</td><td>-1011</td><td>(25.00)/.984</td><td>(32.50)/1.280</td></tr> <tr><td>12</td><td>-1012</td><td>(27.50)/1.083</td><td>(35.00)/1.378</td></tr> <tr><td>13</td><td>-1013</td><td>(30.00)/1.181</td><td>(37.50)/1.476</td></tr> <tr><td>14</td><td>-1014</td><td>(32.50)/1.280</td><td>(40.00)/1.575</td></tr> <tr><td>15</td><td>-1015</td><td>(35.00)/1.378</td><td>(42.50)/1.673</td></tr> <tr><td>16</td><td>-1016</td><td>(37.50)/1.476</td><td>(45.00)/1.772</td></tr> <tr><td>17</td><td>-1017</td><td>(40.00)/1.575</td><td>(47.50)/1.870</td></tr> <tr><td>18</td><td>-1018</td><td>(42.50)/1.673</td><td>(50.00)/1.969</td></tr> <tr><td>19</td><td>-1019</td><td>(45.00)/1.772</td><td>(52.50)/2.067</td></tr> <tr><td>20</td><td>-1020</td><td>(47.50)/1.870</td><td>(55.00)/2.165</td></tr> </tbody> </table>										CCT SIZE	PART NUMBER WITH SNAP-IN LATCHES	A	B				± 0.25 0.010	■	90648-1002	(2.50)/.098	(10.00)/.394	■	-1003	(5.00)/.197	(12.50)/.492	■	-1004	(7.50)/.295	(15.00)/.591	■	-1005	(10.00)/.394	(17.50)/.689	■	-1006	(12.50)/.492	(20.00)/.787	■	-1007	(15.00)/.591	(22.50)/.886	■	-1008	(17.50)/.689	(25.00)/.984	■	-1009	(20.00)/.787	(27.50)/1.083	10	-1010	(22.50)/.886	(30.00)/1.181	11	-1011	(25.00)/.984	(32.50)/1.280	12	-1012	(27.50)/1.083	(35.00)/1.378	13	-1013	(30.00)/1.181	(37.50)/1.476	14	-1014	(32.50)/1.280	(40.00)/1.575	15	-1015	(35.00)/1.378	(42.50)/1.673	16	-1016	(37.50)/1.476	(45.00)/1.772	17	-1017	(40.00)/1.575	(47.50)/1.870	18	-1018	(42.50)/1.673	(50.00)/1.969	19	-1019	(45.00)/1.772	(52.50)/2.067	20	-1020	(47.50)/1.870	(55.00)/2.165
CCT SIZE	PART NUMBER WITH SNAP-IN LATCHES	A	B																																																																																											
			± 0.25 0.010																																																																																											
■	90648-1002	(2.50)/.098	(10.00)/.394																																																																																											
■	-1003	(5.00)/.197	(12.50)/.492																																																																																											
■	-1004	(7.50)/.295	(15.00)/.591																																																																																											
■	-1005	(10.00)/.394	(17.50)/.689																																																																																											
■	-1006	(12.50)/.492	(20.00)/.787																																																																																											
■	-1007	(15.00)/.591	(22.50)/.886																																																																																											
■	-1008	(17.50)/.689	(25.00)/.984																																																																																											
■	-1009	(20.00)/.787	(27.50)/1.083																																																																																											
10	-1010	(22.50)/.886	(30.00)/1.181																																																																																											
11	-1011	(25.00)/.984	(32.50)/1.280																																																																																											
12	-1012	(27.50)/1.083	(35.00)/1.378																																																																																											
13	-1013	(30.00)/1.181	(37.50)/1.476																																																																																											
14	-1014	(32.50)/1.280	(40.00)/1.575																																																																																											
15	-1015	(35.00)/1.378	(42.50)/1.673																																																																																											
16	-1016	(37.50)/1.476	(45.00)/1.772																																																																																											
17	-1017	(40.00)/1.575	(47.50)/1.870																																																																																											
18	-1018	(42.50)/1.673	(50.00)/1.969																																																																																											
19	-1019	(45.00)/1.772	(52.50)/2.067																																																																																											
20	-1020	(47.50)/1.870	(55.00)/2.165																																																																																											
D	<table border="1"> <thead> <tr> <th>CCT SIZE</th> <th>PART NUMBER WITHOUT SNAP-IN LATCHES</th> <th>A</th> <th>B</th> </tr> <tr> <td></td> <td></td> <td></td> <td>± 0.25 0.010</td> </tr> </thead> <tbody> <tr><td>■</td><td>90648-2008</td><td>(17.50)/.689</td><td>(25.00)/.984</td></tr> <tr><td>14</td><td>-2014</td><td>(32.50)/1.280</td><td>(40.00)/1.575</td></tr> </tbody> </table>										CCT SIZE	PART NUMBER WITHOUT SNAP-IN LATCHES	A	B				± 0.25 0.010	■	90648-2008	(17.50)/.689	(25.00)/.984	14	-2014	(32.50)/1.280	(40.00)/1.575																																																																				
CCT SIZE	PART NUMBER WITHOUT SNAP-IN LATCHES	A	B																																																																																											
			± 0.25 0.010																																																																																											
■	90648-2008	(17.50)/.689	(25.00)/.984																																																																																											
14	-2014	(32.50)/1.280	(40.00)/1.575																																																																																											
C	<p style="text-align: center;">90648 - 20**</p> <p style="text-align: center;">WITHOUT SNAP-IN LATCHES CIRCUIT SIZE</p>																																																																																													
B	<p style="text-align: center;">90648 - 10**</p> <p style="text-align: center;">WITH SNAP-IN LATCHES CIRCUIT SIZE</p>																																																																																													
A	<table border="1"> <tr> <td rowspan="2">SEE SHEET 1</td> <td rowspan="2">DIMENSIONS SHOWN (METRIC) INCH UNLESS OTHERWISE SPECIFIED TOLERANCES: ANGULAR ± 1/2°</td> <td>DRWG BY</td> <td colspan="2">POB</td> </tr> <tr> <td>CHK'D BY</td> <td colspan="2"></td> </tr> <tr> <td rowspan="2">C</td> <td rowspan="2">REVISIONS</td> <td>APP'D BY</td> <td colspan="2"></td> </tr> <tr> <td>SCALE</td> <td colspan="2">--</td> </tr> <tr> <td rowspan="2">LTR</td> <td rowspan="2">DRAFT WHERE APPLICABLE MUST REMAIN WITHIN DIMENSIONS</td> <td>DESIGN DIMENSION (PRIMARY)</td> <td><input checked="" type="checkbox"/> (MM)</td> <td><input type="checkbox"/> IN.</td> </tr> <tr> <td>EQUIVALENT DIMENSION (SECONDARY)</td> <td><input type="checkbox"/> (MM)</td> <td><input checked="" type="checkbox"/> IN.</td> </tr> </table>										SEE SHEET 1	DIMENSIONS SHOWN (METRIC) INCH UNLESS OTHERWISE SPECIFIED TOLERANCES: ANGULAR ± 1/2°	DRWG BY	POB		CHK'D BY			C	REVISIONS	APP'D BY			SCALE	--		LTR	DRAFT WHERE APPLICABLE MUST REMAIN WITHIN DIMENSIONS	DESIGN DIMENSION (PRIMARY)	<input checked="" type="checkbox"/> (MM)	<input type="checkbox"/> IN.	EQUIVALENT DIMENSION (SECONDARY)	<input type="checkbox"/> (MM)	<input checked="" type="checkbox"/> IN.																																																												
SEE SHEET 1	DIMENSIONS SHOWN (METRIC) INCH UNLESS OTHERWISE SPECIFIED TOLERANCES: ANGULAR ± 1/2°	DRWG BY	POB																																																																																											
		CHK'D BY																																																																																												
C	REVISIONS	APP'D BY																																																																																												
		SCALE	--																																																																																											
LTR	DRAFT WHERE APPLICABLE MUST REMAIN WITHIN DIMENSIONS	DESIGN DIMENSION (PRIMARY)	<input checked="" type="checkbox"/> (MM)	<input type="checkbox"/> IN.																																																																																										
		EQUIVALENT DIMENSION (SECONDARY)	<input type="checkbox"/> (MM)	<input checked="" type="checkbox"/> IN.																																																																																										
	10	9	8	7	6	5	4	3	2	1																																																																																				

REVISE ONLY ON CAD SYSTEM		SH.	REV.
CAD/CAM FILENAME S90648X2 DCN	THIS DRAWING CONTAINS INFORMATION THAT IS PROPRIETARY TO MOLEX INC. & SHOULD NOT BE USED WITHOUT WRITTEN PERMISSION		
TITLE 2.5mm PITCH P.C.B HEADER ASSEMBLY BOARD TO BOARD			
MOLLEX MOLEX EUROPE		SHEET NO. 20F	DATE 13/10/90
PART NO. SEE CHART	DWG NO. SDA-90648	SIZE B	