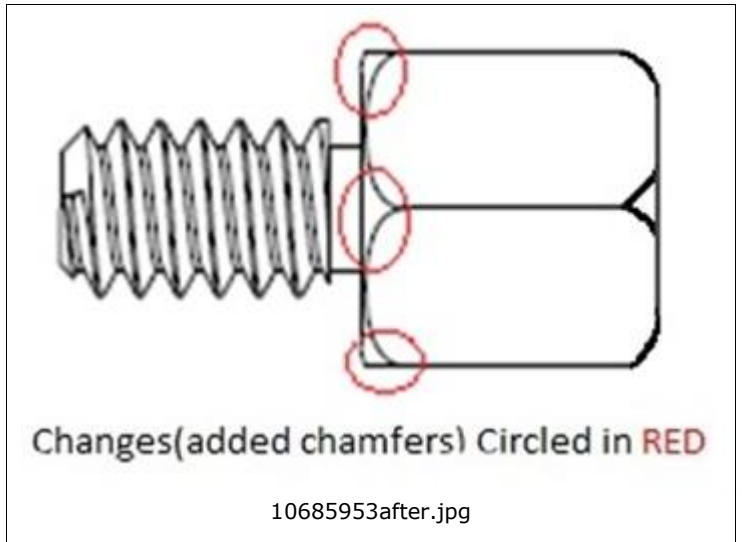
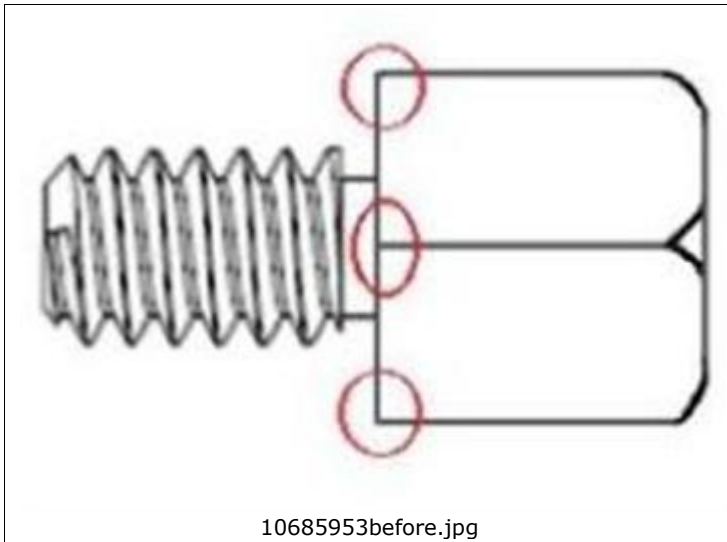


Global Change Notification (GCN)

| | | |
|--------------------|--|--------------|
| Product Family | TDP | 10685953 |
| | | GCN Number |
| Series | 71781 | May 21, 2015 |
| | | Date Issued |
| Reason For Change | Product Component Change | |
| Change Description | This letter is to inform you that Molex is adding chamfers to screw head part number 717811000 to reduce the sharpness of the screw head edges and increase ease of use by hand. No change to fit or function. Change to Form. | |



| | |
|---|--|
| Part Numbers Affected | Please refer to CustomerPartList.csv attached to e-mail message. |
| Reason For Short Notice Exception | Force Majeure |
| Assessment Of Change (How Product Will Be Qualified & Validated) | No impact to fit or function |
| Internal Molex Qualification Date (Planned Date Information Available) | June 01, 2015 |
| Sample Availability Date (Changed Part) | May 01, 2015 |
| Date of Implementation | June 01, 2015 |
| Method of Identifying Change | visually beveled edges on the screw head |
| Recommended Replacement Parts | N/A |
| Last Time Buy Date for Obsolete Parts | |
| Last Time Ship Date for Obsolete Parts | |

| Contact | Name | E-mail | Phone Number |
|---|---|----------------------------|-----------------|
| Sales Engineer | Please refer to e-mail message for your local sales engineer. | | |
| Regional Coordinator (Japan and Korea) | Naomi Maruyama | Naomi.Maruyama@molex.co.jp | +81-46-265-2416 |
| Regional Coordinator (Asia- excluding Japan and Korea) | Allen Yu | Allen.Yu@molex.com | +886-2-66251751 |
| Regional Coordinator (Europe, Middle East, Africa) | Agnes Mburu | Agnes.Mburu@molex.com | +31-40-295-8271 |
| Regional Coordinator (Americas) | Maria Sullivan | Maria.Sullivan@molex.com | 1-727-322-4352 |

Molex, Inc.
 2222 Wellington Court
 Lisle, IL 60532
 TEL: 630-969-4747
www.molex.com