

Han HsB 06 Pos. F Insert Screw 7-12

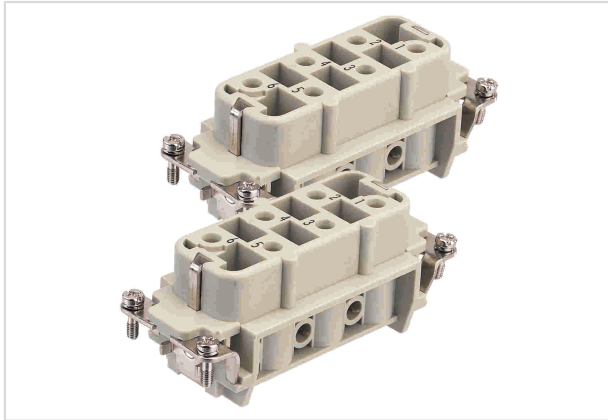


Image is for illustration purposes only. Please refer to product description.

Part number	09 31 006 2711
Specification	Han HsB 06 Pos. F Insert Screw 7-12
HARTING eCatalogue	https://b2b.harting.com/09310062711

Identification

Category	Inserts
Series	Han [®] HsB
Specification	Continuing marking

Version

Termination method	Screw termination
Gender	Female
Size	32 B
With wire protection	Yes
Number of contacts	12
PE contact	Yes
Contact identification	7 ... 12
Details	You need two inserts for a complete assembly!

Technical characteristics

Conductor cross-section	1.5 ... 6 mm ²
Rated current	35 A
Rated voltage conductor-earth	400 V
Rated voltage conductor-conductor	690 V
Rated impulse voltage	6 kV
Pollution degree	3
Rated voltage acc. to UL	600 V
Rated voltage acc. to CSA	600 V



Pushing Performance

Technical characteristics

Insulation resistance	$>10^{10} \Omega$
Contact resistance	$\leq 1 \text{ m}\Omega$
Tightening torque	0.5 Nm
Limiting temperature	-40 ... +125 °C
Mating cycles	≥ 500

Material properties

Material (insert)	Polycarbonate (PC)
Colour (insert)	RAL 7032 (pebble grey)
Material (contacts)	Copper alloy
Surface (contacts)	Silver plated
Material flammability class acc. to UL 94	V-0
RoHS	compliant with exemption
RoHS exemptions	6(c): Copper alloy containing up to 4 % lead by weight
ELV status	compliant with exemption
China RoHS	50
REACH Annex XVII substances	No
REACH ANNEX XIV substances	No
REACH SVHC substances	Yes
REACH SVHC substances	Lead
ECHA SCIP number	5dbb3851-b94e-4e88-97a1-571845975242
California Proposition 65 substances	Yes
California Proposition 65 substances	Nickel Lead

Specifications and approvals

Specifications	EN 60664-1 IEC 61984
UL / CSA	UL 1977 ECBT2.E235076 UL 2237 PVVA2.E318390 CSA-C22.2 No. 182.3 PVVA8.E318390

Commercial data

Packaging size	1
Net weight	89 g



Pushing Performance

Commercial data

Country of origin	Romania
European customs tariff number	85366990
eCl@ss	27440205 Contact insert for industrial connectors