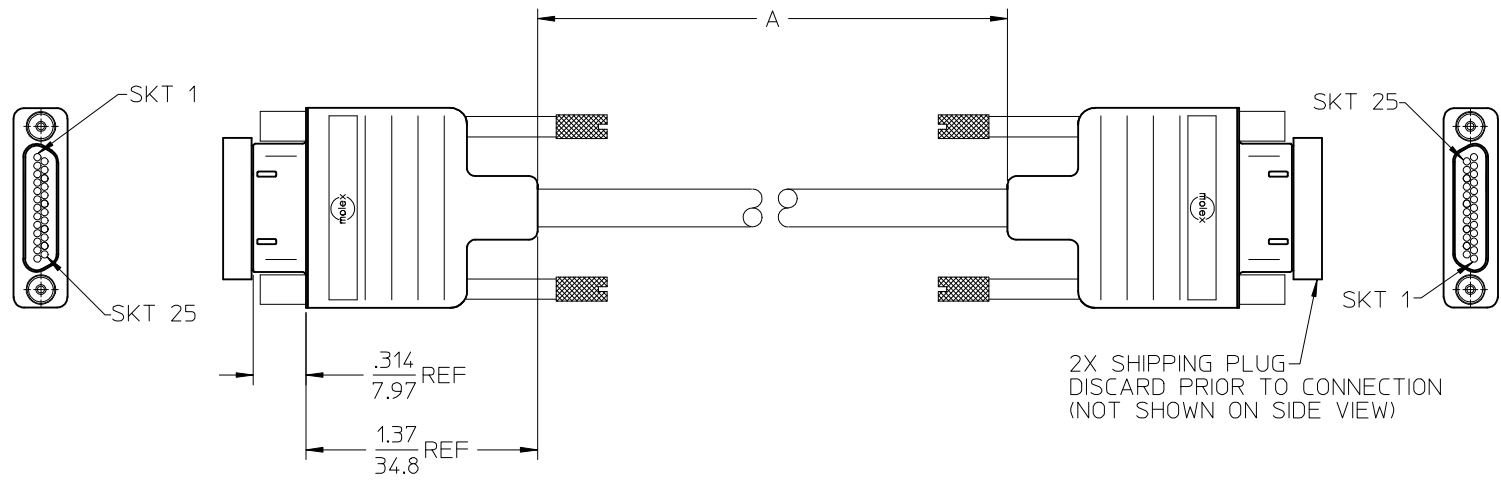


10	9	8	7
MATERIAL NO.	ENGINEERING NO	LEN. "A" INCH	LEN. "A" MM
834249056	83424-9056	8.00+.59/-0.00	203+15/-00
834249057	83424-9057	18.00 ±.39	457 ±10
834249058	83424-9058	36.00+.75/-0.59	914+20/-00
834249059	83424-9059	72.00+1.50/-0.00	1829+40/-00
834249066	83424-9066	144.00+3.00/-0.00	3658+80/-00
834249068	83424-9068	288.00 ±4.00	7315 ±101.6

(E)



PI		P2
1	BLACK	1
2	BROWN	2
3	RED	3
4	ORANGE	4
5	YELLOW	5
6	GREEN	6
7	BLUE	7
8	PURPLE	8
9	GRAY	9
10	WHITE	10
11	PINK	11
12	LIGHT GREEN	12
13	BLACK/WHITE	13
14	BROWN/WHITE	14
15	RED/WHITE	15
16	ORANGE/WHITE	16
17	GREEN/WHITE	17
18	BLUE/WHITE	18
19	PURPLE/WHITE	19
20	RED/BLACK	20
21	ORANGE/BLACK	21
22	YELLOW/BLACK	22
23	GREEN/BLACK	23
24	GRAY/BLACK	24
25	PINK/BLACK	25
SHELL	D.W+BD	SHELL

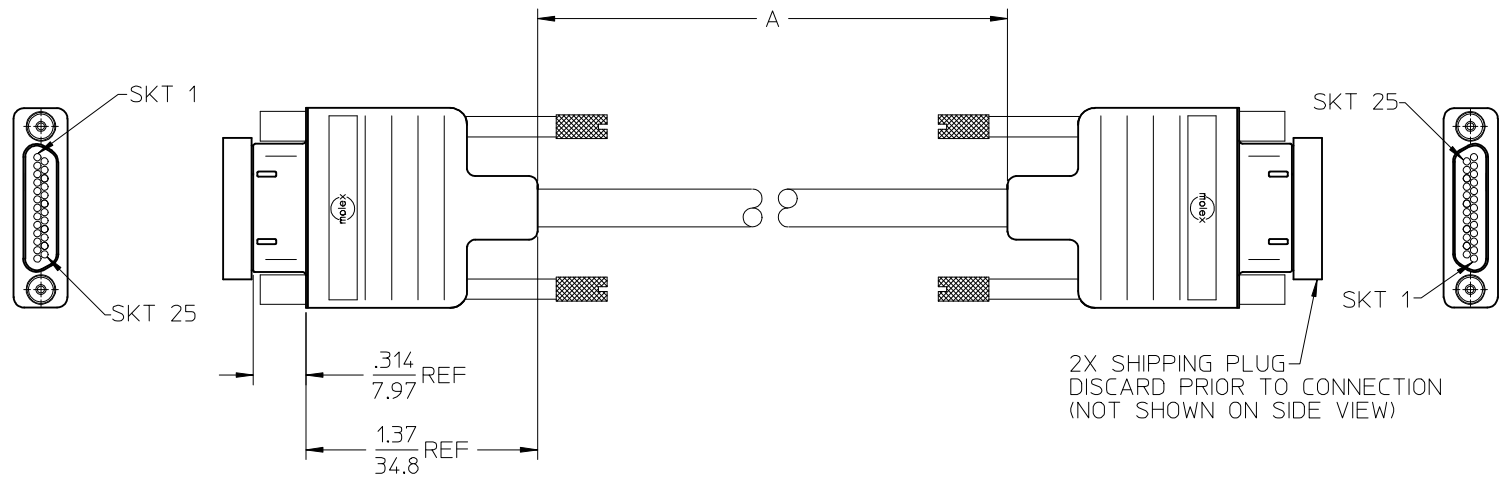
SALES DRAWING

NOTES:  
 1. REFER TO PS-83421-001 FOR PRODUCTS SPEC.  
 2. RoHS COMPLIANT

ADD PN 834249068 EC NO: IPG2017-1034 DRWN: BRUPERT 2017/05/05 CHKD: APPR: JFMURPHY 2017/05/22	QUALITY SYMBOLS	GENERAL TOLERANCES (UNLESS SPECIFIED)	DIMENSION STYLE	SCALE	DESIGN UNITS	THIRD ANGLE PROJECTION	
	▽=0	mm INCH	IN/MM	INCH	INCH		
	▽=0	4 PLACES ± --- ± ---	DRAWN BY DATE			TITLE	
		3 PLACES ± --- ± ---	JLOMASTRO 04/02/20			COMM. MICRO D 25 POS DOUBLE ENDED	
	2 PLACES ± --- ± ---	CHECKED BY DATE					
	1 PLACE ± --- ± ---	RDEROSS 04/02/23					
	ANGULAR ± 1 °	APPROVED BY DATE					
		JFMURPHY 2009/12/15					
		MATERIAL NO.					
		SEE CHART					
		SIZE B					
		THIS DRAWING CONTAINS INFORMATION THAT IS PROPRIETARY TO MOLEX INCORPORATED AND SHOULD NOT BE USED WITHOUT WRITTEN PERMISSION					
					DOCUMENT NO.	SHEET NO.	
					SD-83424-006	1 OF 1	

10	9	8	7
MATERIAL NO.	ENGINEERING NO	LEN. "A" INCH	LEN. "A" MM
834249056	83424-9056	8.00+.59/-0.00	203+15/-00
834249057	83424-9057	18.00 ±.39	457 ±10
834249058	83424-9058	36.00+.75/-0.59	914+20/-00
834249059	83424-9059	72.00+1.50/-0.00	1829+40/-00
834249066	83424-9066	144.00+3.00/-0.00	3658+80/-00
834249068	83424-9068	288.00 ±4.00	7315 ±101.6

(E)



PI		P2
1	BLACK	1
2	BROWN	2
3	RED	3
4	ORANGE	4
5	YELLOW	5
6	GREEN	6
7	BLUE	7
8	PURPLE	8
9	GRAY	9
10	WHITE	10
11	PINK	11
12	LIGHT GREEN	12
13	BLACK/WHITE	13
14	BROWN/WHITE	14
15	RED/WHITE	15
16	ORANGE/WHITE	16
17	GREEN/WHITE	17
18	BLUE/WHITE	18
19	PURPLE/WHITE	19
20	RED/BLACK	20
21	ORANGE/BLACK	21
22	YELLOW/BLACK	22
23	GREEN/BLACK	23
24	GRAY/BLACK	24
25	PINK/BLACK	25
SHELL	D.W+BD	SHELL

SALES DRAWING

NOTES:  
 1. REFER TO PS-83421-001 FOR PRODUCTS SPEC.  
 2. RoHS COMPLIANT

ADD PN 834249068 EC NO: IPG2017-1034 DRWN: BRUPERT 2017/05/05 CHKD: APPR: JFMURPHY 2017/05/22	QUALITY SYMBOLS	GENERAL TOLERANCES (UNLESS SPECIFIED)	DIMENSION STYLE	SCALE	DESIGN UNITS	THIRD ANGLE PROJECTION
	▼=0 ▽=0	mm INCH	IN/MM	INCH	INCH	
		4 PLACES ± --- ± ---	DRAWN BY DATE	TITLE		
		3 PLACES ± --- ± ---	JLOMASTRO 04/02/20	COMM. MICRO D 25 POS DOUBLE ENDED		
	2 PLACES ± --- ± ---	CHECKED BY DATE	MOLEX INCORPORATED			
	1 PLACE ± --- ± ---	RDEROSS 04/02/23	SD-83424-006			
	ANGULAR ± 1 °	APPROVED BY DATE	SHEET NO.			
		JFMURPHY 2009/12/15	1 OF 1			
	DRAFT WHERE APPLICABLE MUST REMAIN WITHIN DIMENSIONS	MATERIAL NO.	DOCUMENT NO.			
		SEE CHART	SD-83424-006			
		SIZE B	THIS DRAWING CONTAINS INFORMATION THAT IS PROPRIETARY TO MOLEX INCORPORATED AND SHOULD NOT BE USED WITHOUT WRITTEN PERMISSION			