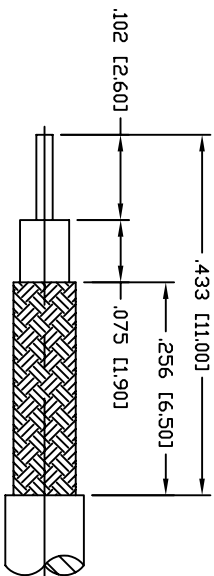
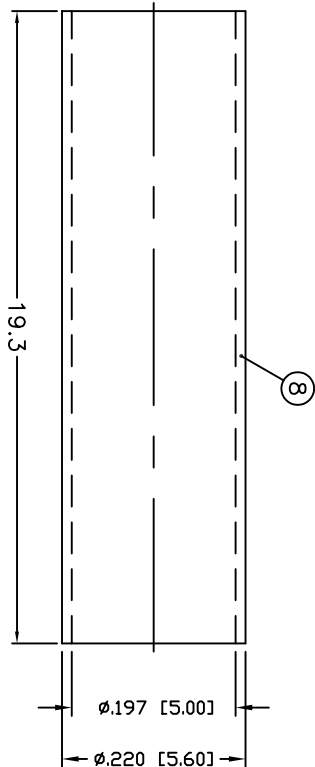
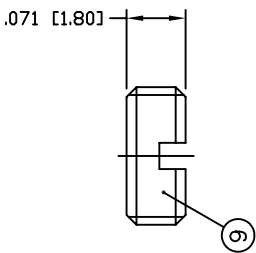
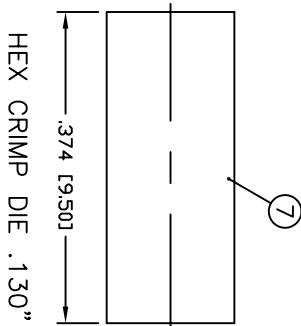
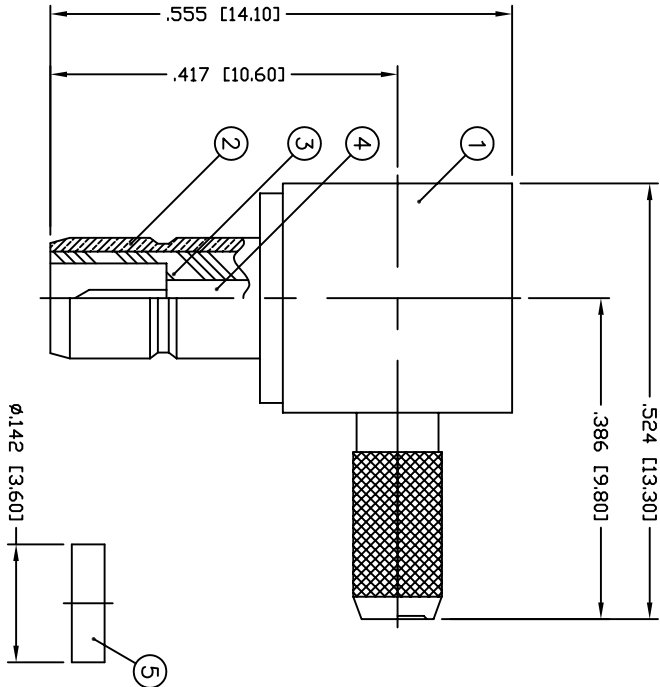


THIS DRAWING CONTAINS INFORMATION PROPRIETARY TO RF INDUSTRIES.  
 ANY UNAUTHORIZED USE OF THIS DRAWING IS EXPRESSLY PROHIBITED  
 WITHOUT WRITTEN PERMISSION FROM RF INDUSTRIES.  
 ANY VIOLATION IS PUNISHABLE UNDER U.S. COPYRIGHT LAWS.

ALL DIMENSIONS ARE REFERENCE ONLY



RECOMMENDED  
 CABLE STRIPPING DIMENSIONS

**SPECIFICATIONS:**

IMPEDANCE: 50 OHMS  
 FREQUENCY RANGE: 0-4 GHz  
 WORKING VOLTAGE: RG-316 : 335 VRMS MAX. AT SEA LEVEL  
 WORKING VOLTAGE: RG-178 : 250 VRMS MAX. AT SEA LEVEL  
 VSWR: 1.5 MAX.  
 FOR RG-174, 188, 188A, 316/U, ALPHA 9174, 9316,  
 BELDEN 8216, 83269, 83284, 84316 & TIMES LMR-100A CABLE

#	DESCRIPTION	QTY	MATERIAL	FINISH (IN)	APPROVALS	DATE
1	BODY	1	BRASS	GOLD, 3μ	008974	
2	SMB BODY	1	Be. Cu.	GOLD, 3μ		
3	INSULATOR	1	PTFE	----		
4	PIN	1	BRASS	GOLD, 30μ		
5	INSULATOR	1	PE	----		
6	COVER	1	BRASS	GOLD, 3μ		
7	FERRULE	1	COPPER	GOLD, 3μ		
8	HEAT SHRINK T.	1	COPPER	----		
9						
10						
11						
12						
13						
14						

UNLESS OTHERWISE SPECIFIED:  
 1. REMOVE ALL BURRS  
 2. BREAK ALL CORNERS & EDGES .005 R. MAX.  
 3. CHAMFER 1ST & LAST THREADS 45°  
 4. SURFACE ROUGHNESS 63 FINISH MIL-STD-10  
 5. DIAMETERS ON COMMON CENTERS TO BE CONCENTRIC WITHIN .002 T.I.R.  
 6. ALL DIMENSIONS ARE AFTER PLATING.

DIMENSIONS ARE IN INCHES  
 AND [MILLIMETERS]

UNLESS OTHERWISE NOTED  
 TOLERANCES ARE:

DECIMALS .XXX±.003 [.08]  
 DIAMETER .XXX±.001 [.03]  
 .XXX±.005 [.13]

**RF connectors**  
 DIVISION OF RF INDUSTRIES, LTD.

**SMB JACK, CRIMP**

RIGHT ANGLE

7610 MIRAMAR RD  
 SAN DIEGO, CA 92126  
 (858) 549-6340  
 (858) 549-6345 FAX

SIZE	CABLE GROUP	DWG NO.	REV
A	B	RSB-4055-1B	-
SCALE:	NTS	CAD FILE	OUTLINE
SHEET	1	OF	1

PART NO.

**RSB-4055-1B**

REV	DESCRIPTION	DWN	DATE	APPROVED
-	ENGINEERING RELEASE	JDM	5/14/99	JDMc