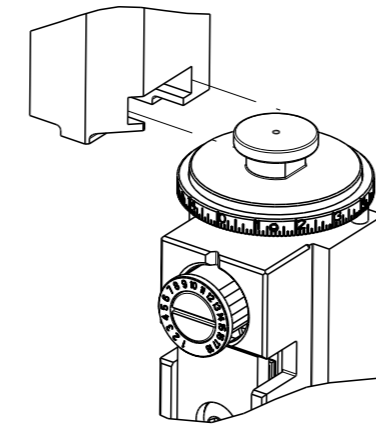


| THIS DRAWING IS UNPUBLISHED. | | RELEASED FOR PUBLICATION | |
|------------------------------|----------|---|------------|
| COPYRIGHT 2015 | | BY TYCO ELECTRONICS CORPORATION. ALL RIGHTS RESERVED. | |
| PART NUMBER | REVISION | DESCRIPTION | FEED TYPE |
| 2266789-1 | B | FINE CRIMP HEIGHT ADJUST | MECHANICAL |
| 2266789-2 | B | FINE CRIMP HEIGHT ADJUST | PNEUMATIC |
| 7-2266789-1 | B | MECHANICAL AND CRIMP TOOLING KIT | MECHANICAL |
| 7-2266789-2 | B | PNEUMATIC AND CRIMP TOOLING KIT | PNEUMATIC |
| 7-2266789-7 | A | CRIMP TOOLING KIT | - |

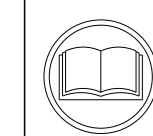
ATLANTIC VERSION TERMINATOR INTERFACE ADAPTER



| APPLICATOR DATA | | |
|--------------------------------------|----------------|------|
| CRIMP | SIZE | TYPE |
| WIRE | 3.68 mm [.145] | F |
| INSUL | 5.08 mm [.200] | F |
| APPLICATOR INSTRUCTIONS 408-35042 | | |

| | | | |
|---|-----------------|--|-----------------|
| TERMINAL DATA: DELPHI TERMINAL DELPHI CRIMP SPECIFICATION | | | |
| TERMINAL NAME: TERMINAL | | | |
| WIRE STRIP LENGTH 4.41-5.18 mm [.174-.204 IN] | | INSULATION DIAMETER RANGE 3.45-3.81 mm [.136-.150 IN] | |
| TERMINAL APPLICATION SPECIFICATION 02989877 PAGE 3 OF 9 Rev 10-29-13 | | | |
| TERMINALS APPLIED | | | |
| TE TERMINAL | DELPHI TERMINAL | TE TERMINAL | DELPHI TERMINAL |
| 1949831-1 | 2989877 | 1572323-3 | 2962544 |
| 1572323-2 | 2962574 | 1572323-1 | 2965143 |

| WIRE SIZE | CRIMP HEIGHT mm [INCH] | CRIMP HEIGHT REFERENCE SETTING |
|-----------|----------------------------|--------------------------------|
| 3.00mm2 | 2.00+/-0.05 [.079+/-0.002] | 7.0 |



- 1 RECOMMENDED SPARE PARTS
- 2 REFER TO SUPPLIED INSTRUCTION SHEET FOR CLEANING, LUBRICATION AND STORAGE OF APPLICATOR.
- 3 APPLY PART NUMBER 2-23419-6 LOCTITE TO THREADS OF ITEM 242.
- 4 CRIMP HEIGHT REFERENCE SETTING WAS THE SETTING USED WHEN THE APPLICATOR WAS QUALIFIED AT THE FACTORY. ADJUSTMENT MAY BE NECESSARY WHEN RUNNING APPLICATOR IN THE FIELD.
- 5. UNLESS SPECIFIED OTHERWISE TORQUE VALUES SHALL BE USED PER DOCUMENT, 101-35000.

***WARNING**
ON INSTALLATION, SET WIRE DISC TO CRIMP HEIGHT REFERENCE SETTING FOR LARGEST WIRE SIZE. CRIMP HEIGHT REFERENCE SETTINGS GREATER THAN THE VALUE SHOWN MAY CAUSE DAMAGE TO THE CRIMP TOOLING, REFER TO THE INSTRUCTION SHEET FOR PROPER SETUP AND ADJUSTMENTS.

ATLANTIC VERSION
Shown on sheets 1 of 4 & 2 of 4
(Pacific version shown on sheets 3 of 4 & 4 of 4)

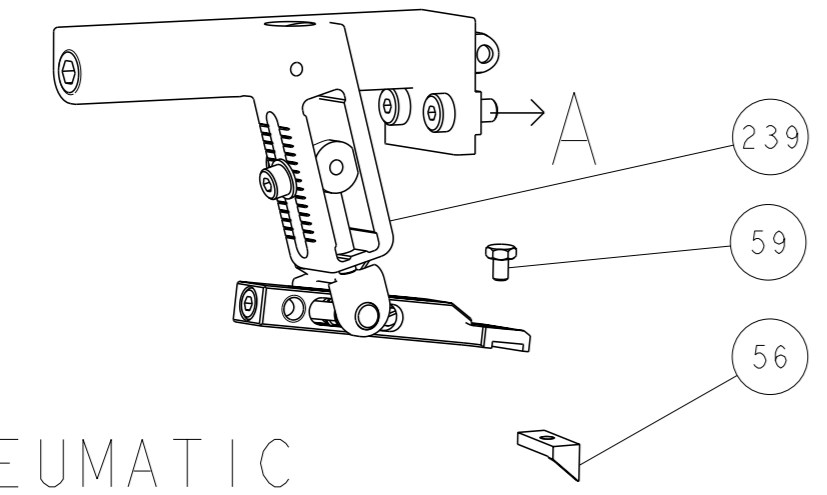
| LOC | DIST | REVISIONS | | | |
|-----|------|-----------|---------------|-----------|-------|
| A | 66 | REV | BY | DATE | APPD |
| | | A | RELEASED | 10JUL2015 | BW GB |
| | | B | ECR-19-014227 | 11SEP2019 | FJ TE |

| | | | | | | | | |
|---|-----|-----|-----|-----|-------------|-------------------------------------|-------------------------------|---|
| - | 1 | - | 1 | - | 2119641-1 | FEED CAM, AIR FEED | 248 | |
| - | 1 | 1 | 1 | 1 | 2119082-4 | CAM, SNAIL, INSULATION ADJUSTMENT | 244 | |
| - | 1 | 1 | 1 | 1 | 2079764-1 | WASHER, WAVE SPRING, CREST-TO-CREST | 243 | |
| - | 1 | 1 | 1 | 1 | 2119083-1 | RETAINER, INSULATION DIAL | 242 | |
| - | - | 1 | - | 1 | 2119580-1 | MECHANICAL FEED ASSEMBLY | 239 | |
| - | 1 | - | 1 | - | 2844940-1 | AIR FEED MODULE | 238 | |
| - | 1 | 1 | 1 | 1 | 1-356885-1 | STOP, SHEAR | 237 | |
| - | REF | REF | REF | REF | 994970-2 | COUNTER, MAGNETIC | 164 | |
| - | 1 | 1 | 1 | 1 | 1-22281-8 | SPRING, COMPRESSION | 121 | |
| - | 1 | 1 | 1 | 1 | 2844908-1 | SCREW, LOCKING | 99 | |
| - | 1 | 1 | 1 | 1 | 2844907-1 | POST, LOCKING | 98 | |
| - | 1 | 1 | 1 | 1 | 1803258-1 | FRONT STRIP GUIDE | 96 | |
| - | 1 | 1 | 1 | 1 | 2168083-6 | SCR, SKT HD CAP, RoHS, M5 X 65 | 93 | |
| - | 2 | 2 | 2 | 2 | 1-2168083-3 | SCR, SKT HD CAP, RoHS, M3 X 16 | 85 | |
| - | 1 | 1 | 1 | 1 | 455888-7 | SPACER, CRIMPER | 82 | |
| - | 1 | 1 | 1 | 1 | 4-240641-7 | SPACER | 81 | |
| - | 1 | 1 | 1 | 1 | 1803607-3 | DOCUMENTATION PACKAGE | 71 | |
| - | 1 | 1 | 1 | 1 | 2119740-1 | TAG, IDENTIFICATION | 67 | |
| - | 2 | 2 | 2 | 2 | 2168078-1 | SCREW, DRIVE, RH, RoHS, 2 x .188 | 66 | |
| - | 2 | 2 | 2 | 2 | 2-18032-5 | SCR, SET, FLT PNT, M5 X 20.0 | 61 | |
| - | 1 | 1 | 1 | 1 | 2168083-2 | SCR, SKT HD CAP, RoHS, M4 X 8.0 | 60 | |
| - | 1 | 1 | 1 | 1 | 5-18022-5 | SCR, HEX HD CAP, M4 X 6.0 | 59 | |
| - | 1 | 1 | 1 | 1 | 1338683-1 | FEED PAWL | 56 | |
| - | 2 | 2 | 2 | 2 | 2168083-3 | SCR, SKT HD CAP, M4 X 12.0 | 54 | |
| - | 2 | 2 | 2 | 2 | 2168083-9 | SCR, SKT HD CAP, RoHS, M4 X 20 | 53 | |
| - | 1 | 2 | 1 | 2 | 18023-9 | SCR, SKT HD CAP M4 X 6.0 | 49 | |
| - | - | 1 | - | 1 | 2119652-1 | FEED CAM, PRE FEED | 48 | |
| - | - | 1 | - | 1 | 2119653-1 | FEED CAM, POST FEED | 47 | |
| - | 1 | 1 | 1 | 1 | 1803583-9 | APPLICATOR BASIC ASSEMBLY, SF | 46 | |
| - | 1 | 1 | 1 | 1 | 1803515-1 | RAM ASSEMBLY, SF ATLANTIC | 44 | |
| - | 1 | 1 | 1 | 1 | 1803602-1 | SCR, BHSC, RoHS (M8 X 25) | 41 | |
| - | 2 | 2 | 2 | 2 | 2168083-1 | SCR, SKT HD CAP, RoHS, M3 X 8.0 | 33 | |
| - | 1 | 1 | 1 | 1 | 2305692-8 | PLATE, REAR STRIP GUIDE | 29 | |
| - | 2 | 2 | 2 | 2 | 22281-8 | SPRING, COMPRESSION | 27 | |
| - | 1 | 1 | 1 | 1 | 356835-1 | LEVER, DRAG RELEASE | 26 | |
| - | 1 | 1 | 1 | 1 | 240792-3 | DRAG, TERMINAL | 25 | |
| - | 1 | 1 | 1 | 1 | 2-189124-3 | GUIDE, FRONT STRIP | 24 | |
| - | 1 | 1 | 1 | 1 | 980371-4 | SCR, SKT HD SHLDR 5.0 DIA X 6.0 | 23 | |
| - | 1 | 1 | 1 | 1 | 2168083-2 | SCR, SKT HD CAP, RoHS, M4 X 8.0 | 21 | |
| - | 1 | 1 | 1 | 1 | 1-18028-2 | WASHER, FLAT, REG M4 | 20 | |
| - | 1 | 1 | 1 | 1 | 2119533-1 | STRIPPER, SIDE FEED | 19 | |
| - | 1 | 1 | 1 | 1 | 1673257-5 | SHEAR, FLOATING | 17 | |
| - | 2 | 2 | 2 | 2 | 1-2168083-1 | SCR, SKT HD CAP, RoHS, M3 X 6 | 16 | |
| - | 1 | 1 | 1 | 1 | 1673256-4 | PLATE, REAR SHEAR | 15 | |
| - | 1 | 1 | 1 | 1 | 1673255-2 | HOLDER, REAR SHEAR | 14 | |
| - | 1 | 1 | 1 | 1 | 3-22280-3 | SPRING, COMPRESSION | 12 | |
| - | - | - | - | - | - | - | 10 | |
| - | - | - | - | - | - | - | 9 | |
| - | 1 | 2 | 2 | 1 | 1 | 8-1803054-5 | ANVIL, COMBINATION | 8 |
| - | - | - | - | - | - | - | 7 | |
| - | 1 | 1 | 1 | 1 | 2-690468-8 | DEPRESSOR SHEAR, REAR | 6 | |
| - | - | - | - | - | - | - | 5 | |
| - | 1 | 1 | 1 | 1 | 2-238009-1 | BLOCK, FL CRIMPER SPACER | 4 | |
| - | 1 | 2 | 2 | 1 | 1 | 1803246-1 | CRIMPER, INSULATION F PREMIUM | 3 |
| - | 1 | 1 | 1 | 1 | 1 | 455888-8 | SPACER, CRIMPER | 2 |
| - | 1 | 2 | 2 | 1 | 1 | 4-568176-2 | CRIMPER, WIRE | 1 |

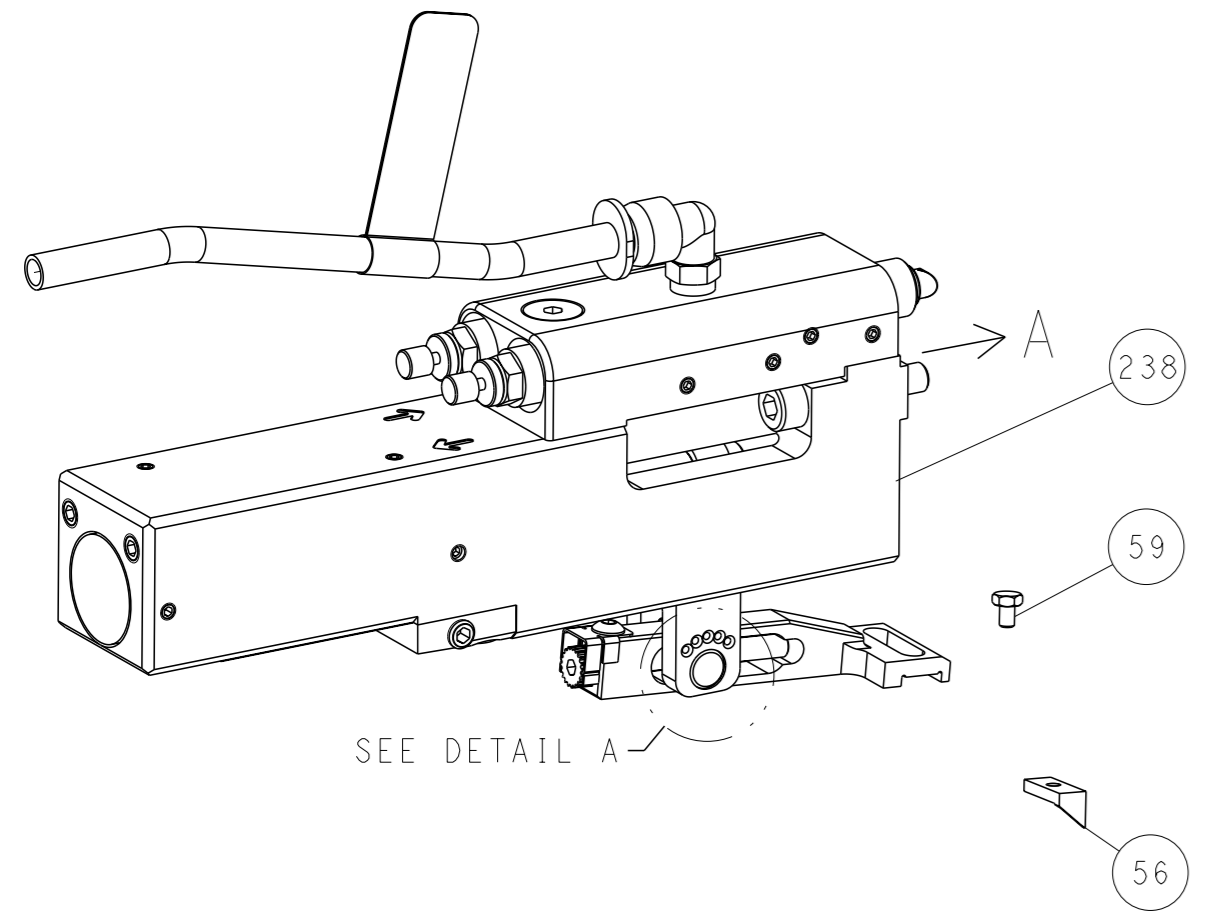
| | | | | | | |
|--|--|--|--|--|--|--|
| DIMENSIONS: mm | | TOLERANCES UNLESS OTHERWISE SPECIFIED: 0 PLC ±0.5 2 PLC ±0.13 3 PLC ±0.013 4 PLC ±0.001 ANGLES ±0.001 | | OWN B. WEAVER 13MAY2015 CHK G. BAILEY 13MAY2015 APPD G. BAILEY 13MAY2015 | TE Connectivity Harrisburg, PA 17105-3608 | |
| MATERIAL | | FINISH | | NAME Ocean Side Feed Applicator | | |
| WEIGHT | | SCALE 1:2 | | RESTRICTED TO | | |
| Customer Accessible Production Drawing | | SCALE 1:2 SHEET 1 OF 4 REV B | | | | |

| LOC | DIST | REVISIONS | | | | | |
|-----|------|-----------|-----|-------------|------|-----|------|
| A | 66 | P | LYR | DESCRIPTION | DATE | OWN | APVD |
| | | - | | SEE SHEET 1 | - | - | - |

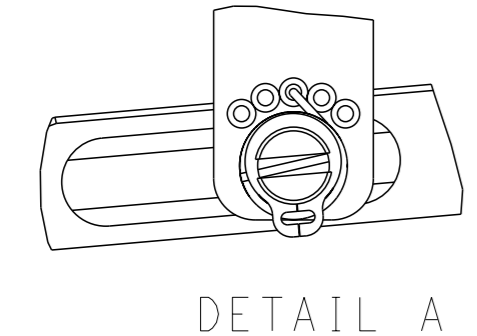
FEED TYPE MECHANICAL



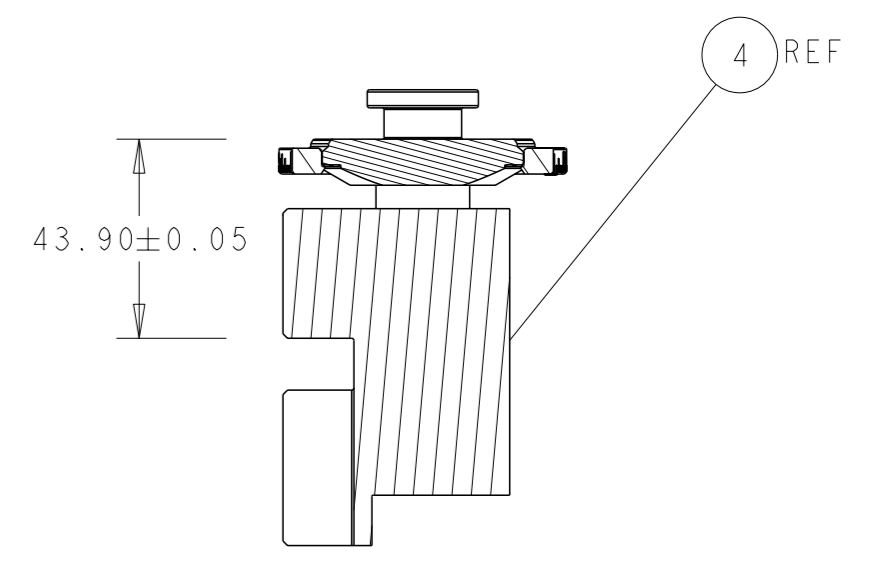
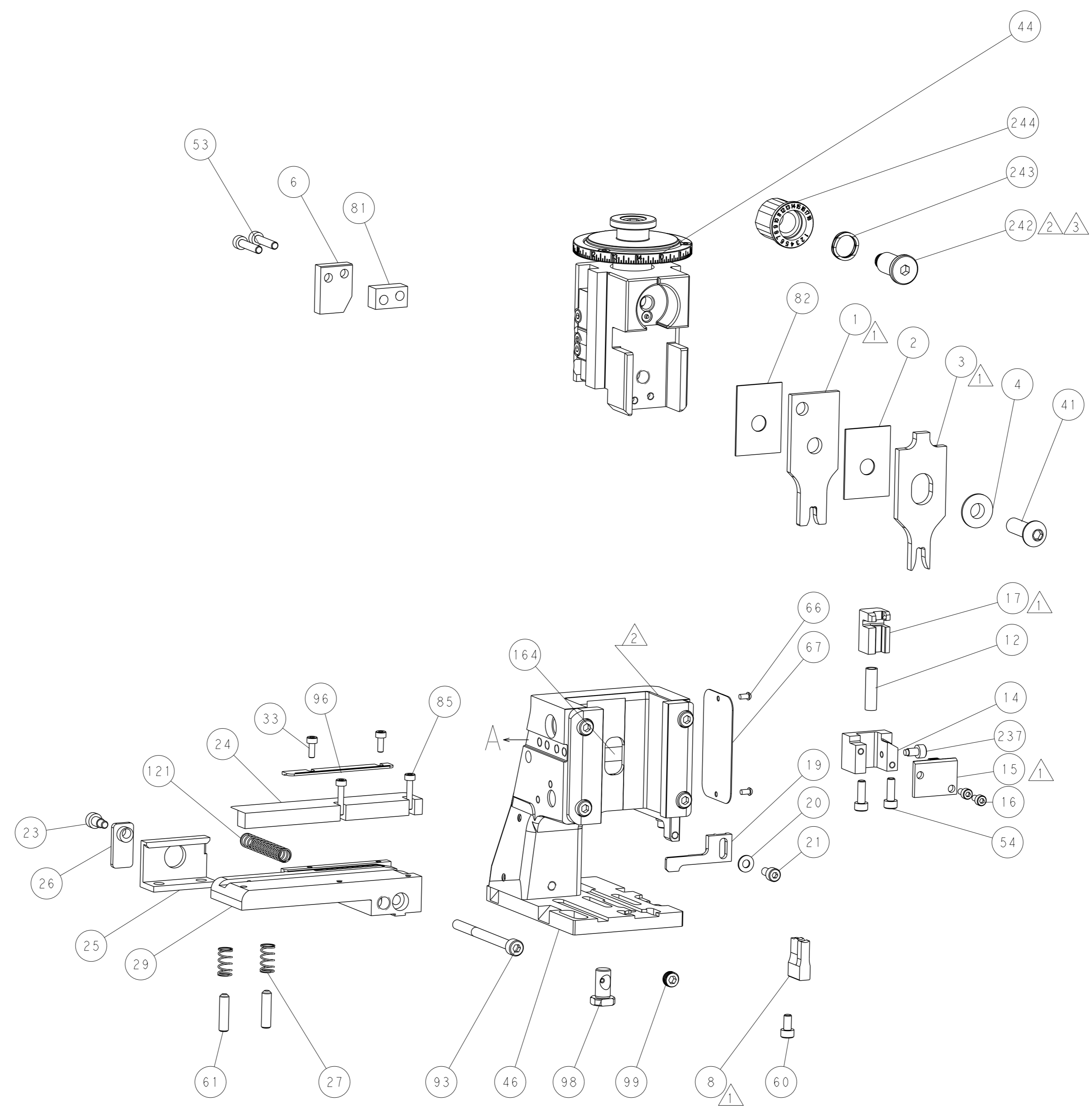
PNEUMATIC



FEED SPRING SETTING POSITION (SHOWN FROM REAR SIDE)

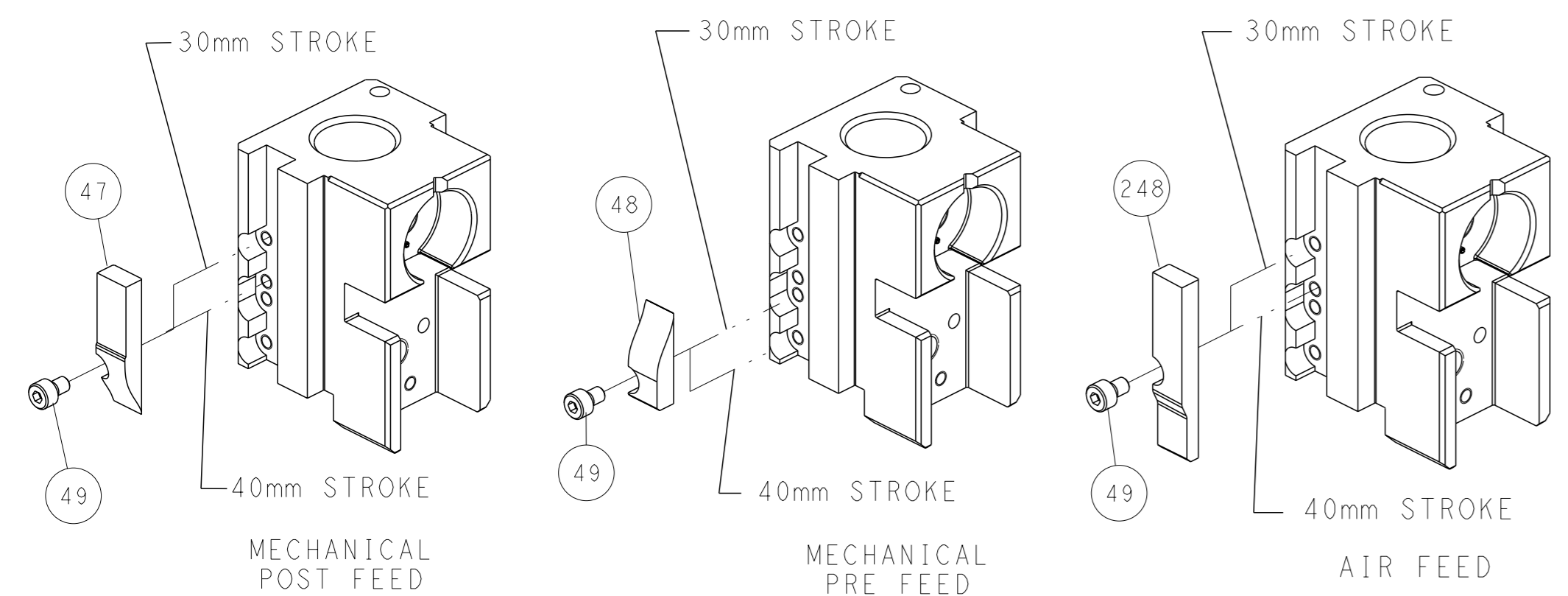


DETAIL A



RAM SET-UP

CAM POSITIONS

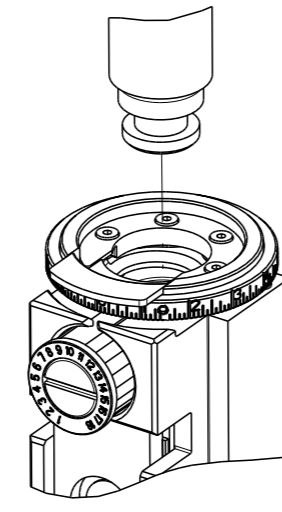


ATLANTIC VERSION
 Shown on sheets 1 of 4 & 2 of 4
 (Pacific version shown on sheets 3 of 4 & 4 of 4)

| | | | | | |
|---|-----------|---|---|----------------------------------|--|
| <small>THIS DRAWING IS UNPUBLISHED. RELEASED FOR PUBLICATION 2015 BY TYCO ELECTRONICS CORPORATION. ALL RIGHTS RESERVED.</small> | | OWN: B. WEAVER CHK: G. BAILEY APVD: G. BAILEY | 13MAY2015 13MAY2015 13MAY2015 | NAME: Ocean Side Feed Applicator | TE Connectivity Harrisburg, PA 17105-3608 |
| DIMENSIONS: mm TOLERANCES UNLESS OTHERWISE SPECIFIED: 0 PLC ±0.5 1 PLC ±0.13 2 PLC ±0.13 3 PLC ±0.013 4 PLC ±0.001 ANGLES ±0.001 | MATERIAL: | WEIGHT: | SIZE: A1 CAGE CODE: 00779 DRAWING NO: C=2266789 | RESTRICTED TO: | SCALE: 1:2 SHEET: 2 of 4 REV: B |

| PART NUMBER | REVISION | DESCRIPTION | FEED TYPE |
|-------------|----------|--------------------------|------------|
| 2-2266789-1 | B | FINE CRIMP HEIGHT ADJUST | MECHANICAL |
| 2-2266789-2 | B | FINE CRIMP HEIGHT ADJUST | PNEUMATIC |
| 7-2266789-7 | A | CRIMP TOOLING KIT | - |

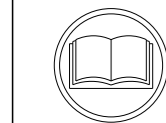
PACIFIC VERSION TERMINATOR
INTERFACE ADAPTER



| APPLICATOR DATA | | |
|--------------------------------------|----------------|------|
| CRIMP | SIZE | TYPE |
| WIRE | 3.68 mm (.145) | F |
| INSUL | 5.08 mm (.200) | F |
| APPLICATOR INSTRUCTIONS 408-35042 | | |

| TERMINAL DATA: DELPHI TERMINAL DELPHI CRIMP SPECIFICATION | | | |
|--|------------------------------|-------------|-----------------|
| TERMINAL NAME: TERMINAL | | | |
| WIRE STRIP LENGTH | INSULATION DIAMETER RANGE | | |
| 4.41-5.18 mm (.174-.204 IN) | Ø3.45-3.81 mm (.136-.150 IN) | | |
| TERMINAL APPLICATION SPECIFICATION 02989877 PAGE 3 OF 9 Rev 10-29-13 | | | |
| TERMINALS APPLIED | | | |
| TE TERMINAL | DELPHI TERMINAL | TE TERMINAL | DELPHI TERMINAL |
| 1949831-1 | 2989877 | 1572323-3 | 2962544 |
| 1572323-2 | 2962574 | 1572323-1 | 2965143 |

| WIRE SIZE | CRIMP HEIGHT mm [INCH] | CRIMP HEIGHT REFERENCE SETTING |
|-----------|----------------------------|--------------------------------|
| 3.00mm2 | 2.00+/-0.05 [.079+/-0.002] | 7.0 |



- RECOMMENDED SPARE PARTS
- REFER TO SUPPLIED INSTRUCTION SHEET FOR CLEANING, LUBRICATION AND STORAGE OF APPLICATOR.
- APPLY PART NUMBER 2-23419-6 LOCTITE TO THREADS OF ITEM 242.
- CRIMP HEIGHT REFERENCE SETTING WAS THE SETTING USED WHEN THE APPLICATOR WAS QUALIFIED AT THE FACTORY. ADJUSTMENT MAY BE NECESSARY WHEN RUNNING APPLICATOR IN THE FIELD.
- UNLESS SPECIFIED OTHERWISE TORQUE VALUES SHALL BE USED PER DOCUMENT, 101-35000.

***WARNING**
ON INSTALLATION, SET WIRE DISC TO CRIMP HEIGHT REFERENCE SETTING FOR LARGEST WIRE SIZE. CRIMP HEIGHT REFERENCE SETTINGS GREATER THAN THE VALUE SHOWN MAY CAUSE DAMAGE TO THE CRIMP TOOLING, REFER TO THE INSTRUCTION SHEET FOR PROPER SETUP AND ADJUSTMENTS.

PACIFIC VERSION
Shown on sheets 3 of 4 & 4 of 4
(Atlantic version shown on sheets 1 of 4 & 2 of 4)

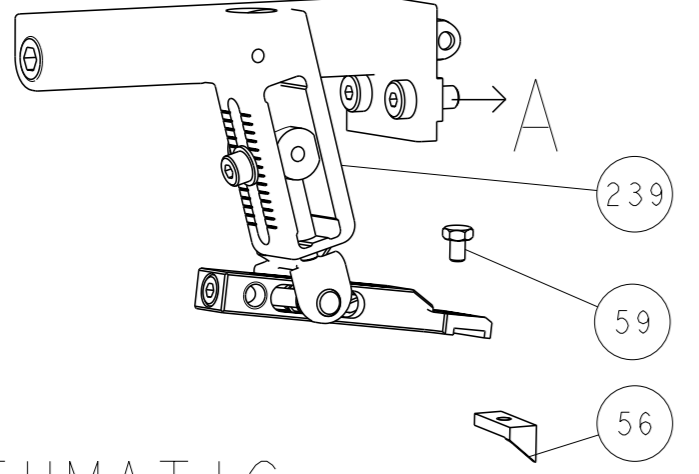
| LOC | DIST | REVISIONS | | | | | |
|-----|------|-----------|-----|-------------|------|-----|------|
| A | 66 | P | LYR | DESCRIPTION | DATE | OWN | APVD |
| | | - | - | SEE SHEET 1 | - | - | - |

| | | | | | |
|---|-----|-----|---------------|-------------------------------------|---------|
| - | 1 | 1 | 2119082-4 | CAM, SNAIL, INSULATION ADJUSTMENT | 244 |
| - | 1 | 1 | 2079764-1 | WASHER, WAVE SPRING, CREST-TO-CREST | 243 |
| - | 1 | 1 | 2119083-1 | RETAINER, INSULATION DIAL | 242 |
| - | - | 1 | 2119580-1 | MECHANICAL FEED ASSEMBLY | 239 |
| - | 1 | - | 2844940-1 | AIR FEED MODULE | 238 |
| - | 1 | 1 | 1-356885-1 | STOP, SHEAR | 237 |
| - | REF | REF | 994970-2 | COUNTER, MAGNETIC | 164 |
| - | 1 | - | 2119641-2 | FEED CAM, AIR FEED | 151 |
| - | 1 | 1 | 2168083-8 | SCR, SKT HD CAP, RoHS, M4 X 16 | 144 |
| - | 2 | 2 | 2168083-9 | SCR, SKT HD CAP, RoHS, M4 X 20 | 143 |
| - | - | 1 | 2119653-2 | FEED CAM, POST FEED | 142 |
| - | 1 | 1 | 1-1803583-0 | APPLICATOR BASIC ASSEMBLY, SF | 141 |
| - | 1 | 1 | 1803516-1 | RAM ASSEMBLY, SF PACIFIC | 140 |
| - | 1 | 1 | 1-22281-8 | SPRING, COMPRESSION | 121 |
| - | 1 | 1 | 2844908-1 | SCREW, LOCKING | 99 |
| - | 1 | 1 | 2844907-1 | POST, LOCKING | 98 |
| - | 1 | 1 | 1803258-1 | FRONT STRIP GUIDE | 96 |
| - | 1 | 1 | 2168083-6 | SCR, SKT HD CAP, RoHS, M5 X 65 | 93 |
| - | 2 | 2 | 1-2168083-3 | SCR, SKT HD CAP, RoHS, M3 X 16 | 85 |
| - | 1 | 1 | 455888-7 | SPACER, CRIMPER | 82 |
| - | 1 | 1 | 4-240641-7 | SPACER | 81 |
| - | 1 | 1 | 1803607-3 | DOCUMENTATION PACKAGE | 71 |
| - | 1 | 1 | 2119740-1 | TAG, IDENTIFICATION | 67 |
| - | 2 | 2 | 2168078-1 | SCREW, DRIVE, RH, RoHS, 2 x .188 | 66 |
| - | 2 | 2 | 2-18032-5 | SCR, SET, FLT PNT, M5 X 20.0 | 61 |
| - | 1 | 1 | 5-18022-5 | SCR, HEX HD CAP, M4 X 6.0 | 59 |
| - | 1 | 1 | 1338683-1 | FEED PAWL | 56 |
| - | 2 | 2 | 2168083-9 | SCR, SKT HD CAP, RoHS, M4 X 20 | 53 |
| - | 1 | 2 | 18023-9 | SCR, SKT HD CAP M4 X 6.0 | 49 |
| - | - | 1 | 2119652-1 | FEED CAM, PRE FEED | 48 |
| - | 1 | 1 | 1803602-1 | SCR, BHSC, RoHS (M8 X 25) | 41 |
| - | 2 | 2 | 2168083-1 | SCR, SKT HD CAP, RoHS, M3 X 8.0 | 33 |
| - | 1 | 1 | 2305692-8 | PLATE, REAR STRIP GUIDE | 29 |
| - | 2 | 2 | 22281-8 | SPRING, COMPRESSION | 27 |
| - | 1 | 1 | 356835-1 | LEVER, DRAG RELEASE | 26 |
| - | 1 | 1 | 240792-3 | DRAG, TERMINAL | 25 |
| - | 1 | 1 | 2-189124-3 | GUIDE, FRONT STRIP | 24 |
| - | 1 | 1 | 980371-4 | SCR, SKT HD SHLDR 5.0 DIA X 6.0 | 23 |
| - | 1 | 1 | 2168083-2 | SCR, SKT HD CAP, RoHS, M4 X 8.0 | 21 |
| - | 1 | 1 | 1-18028-2 | WASHER, FLAT, REG M4 | 20 |
| - | 1 | 1 | 2119533-1 | STRIPPER, SIDE FEED | 19 |
| - | 1 | 1 | 1673257-5 | SHEAR, FLOATING | 17 |
| - | 2 | 2 | 1-2168083-1 | SCR, SKT HD CAP, RoHS, M3 X 6 | 16 |
| - | 1 | 1 | 1673256-4 | PLATE, REAR SHEAR | 15 |
| - | 1 | 1 | 1673255-2 | HOLDER, REAR SHEAR | 14 |
| - | 1 | 1 | 3-22280-3 | SPRING, COMPRESSION | 12 |
| - | - | - | - | - | 10 |
| - | - | - | - | - | 9 |
| - | 1 | 1 | 1-8-1803054-5 | ANVIL, COMBINATION | 8 |
| - | - | - | - | - | 7 |
| - | 1 | 1 | 2-690468-8 | DEPRESSOR SHEAR, REAR | 6 |
| - | - | - | - | - | 5 |
| - | 1 | 1 | 2-238009-1 | BLOCK, FL CRIMPER SPACER | 4 |
| - | 1 | 1 | 1803246-1 | CRIMPER, INSULATION F PREMIUM | 3 |
| - | 1 | 1 | 455888-8 | SPACER, CRIMPER | 2 |
| - | 1 | 1 | 4-568176-2 | CRIMPER, WIRE | 1 |
| - | 77 | 22 | 21 | PART NO | ITEM NO |

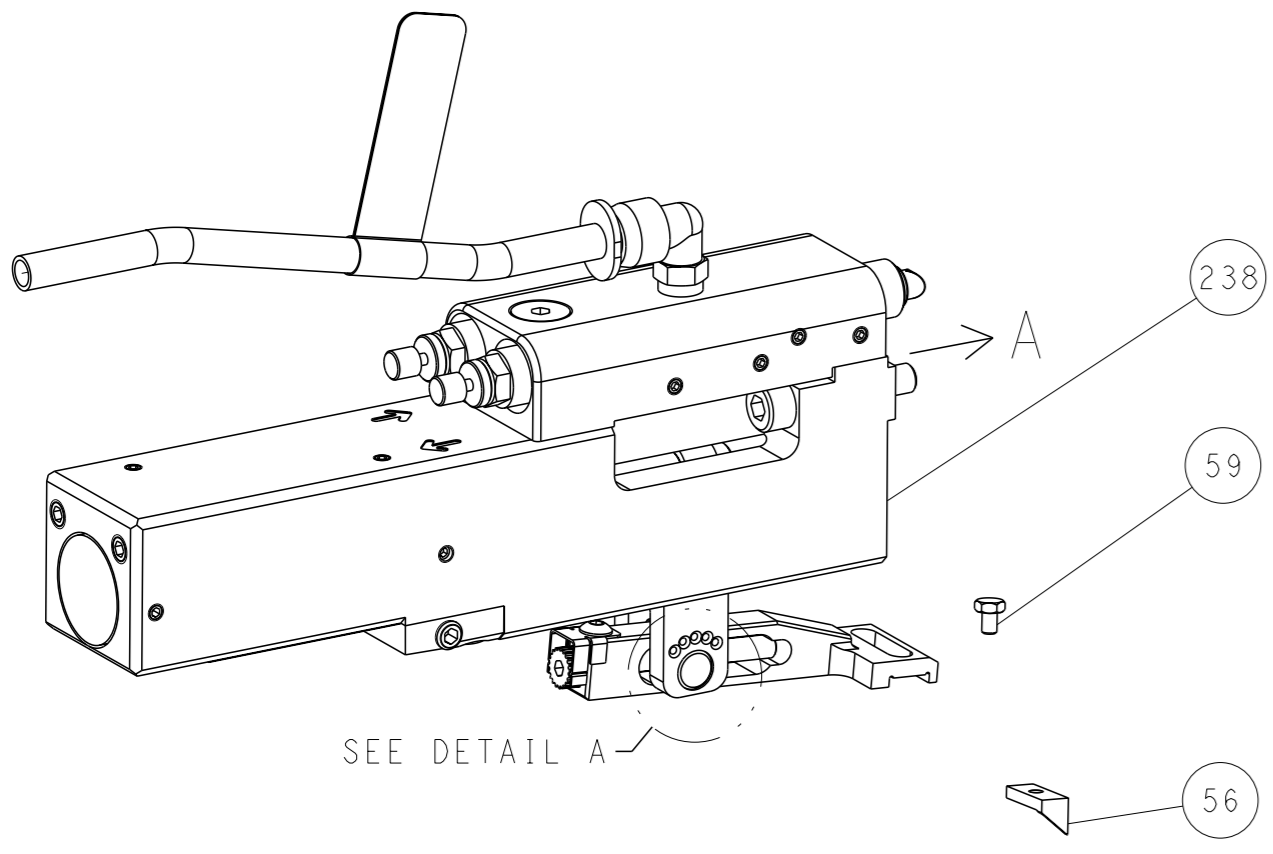
| | | | |
|---|---|---|---|
| <small>THIS DRAWING IS UNPUBLISHED. IT IS SUBJECT TO CHANGE AND THE USER ASSUMES ALL RESPONSIBILITY FOR THE CORRECTNESS OF THE INFORMATION SHOWN ON THIS DRAWING. CONTACT THE DRAWING ENGINEER FOR ANY QUESTIONS.</small> | | OWN: B. WEAVER 13MAY2015 CHK: G. BAILEY 13MAY2015 APVD: G. BAILEY 13MAY2015 | NAME: TE Connectivity Harrisburg, PA 17105-3608 |
| DIMENSIONS: mm | TOLERANCES UNLESS OTHERWISE SPECIFIED: 0 PLC ±.5 1 PLC ±0.5 2 PLC ±0.13 3 PLC ±0.013 4 PLC ±0.0001 ANGLES FINISH ±. | APPLICATION SPEC: - WEIGHT: - MATERIAL: - | SIZE: A1 CASE CODE: 00779 DRAWING NO: C=2266789 RESTRICTED TO: - |
| Customer Accessible Production Drawing | | SCALE: 1:2 | SHEET 3 OF 4 REV B |

| LOC | DIST | REVISIONS | | | |
|-----|------|-------------|------|-----|------|
| A | 66 | REV | DATE | OWN | APVD |
| - | - | SEE SHEET 1 | - | - | - |

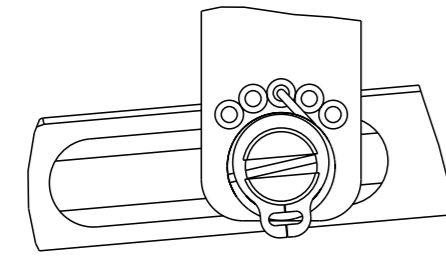
FEED TYPE MECHANICAL



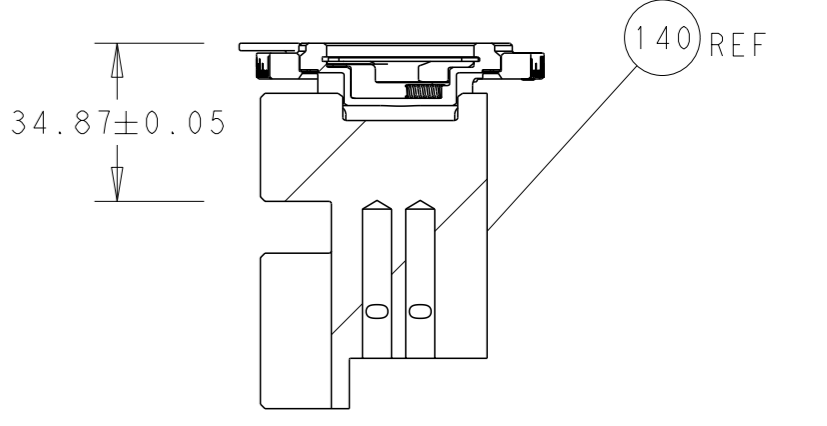
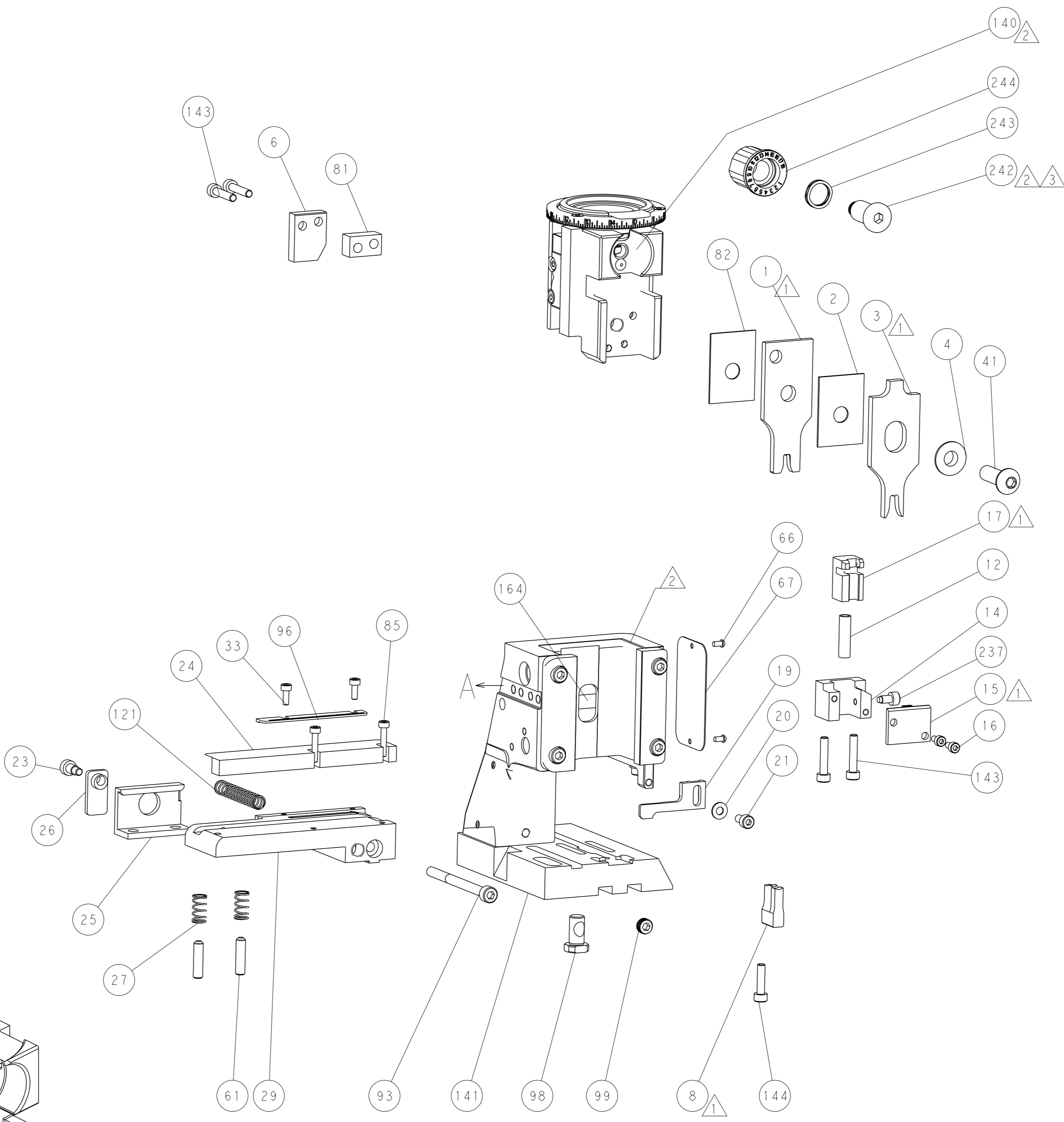
PNEUMATIC



FEED SPRING SETTING POSITION
(SHOWN FROM REAR SIDE)

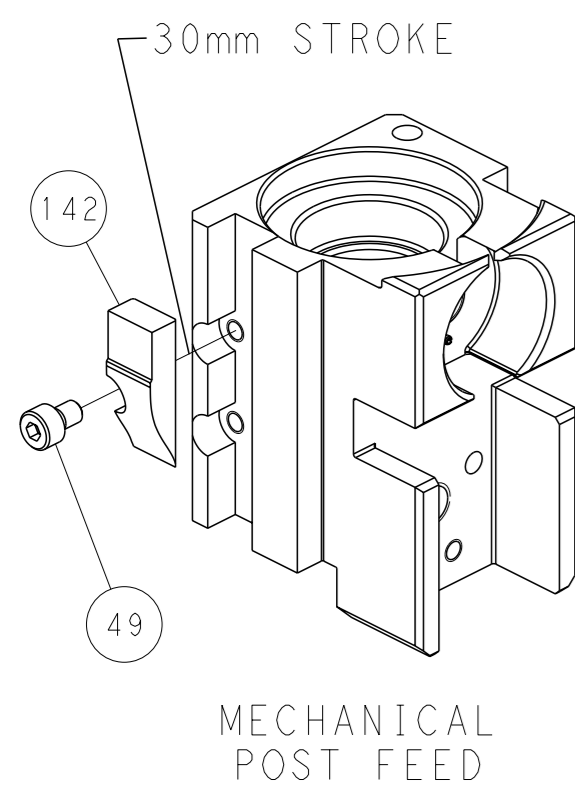


DETAIL A

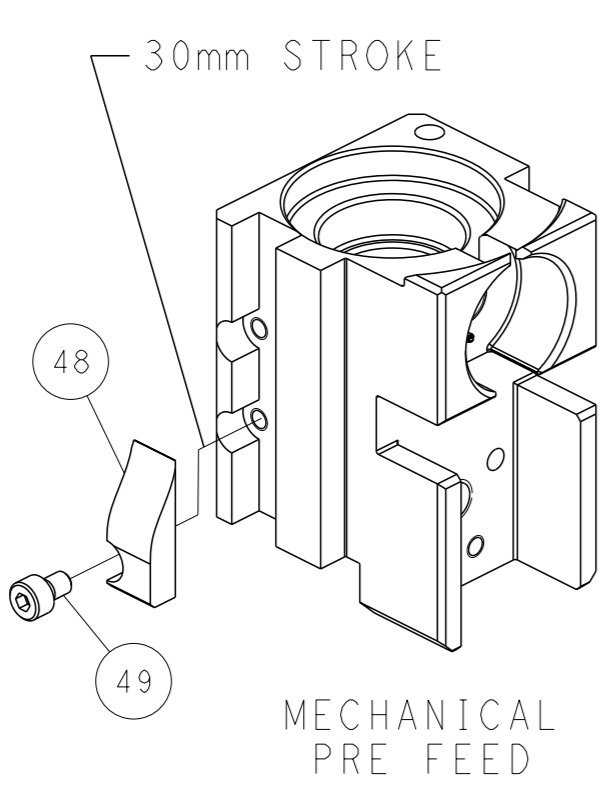


RAM SET-UP

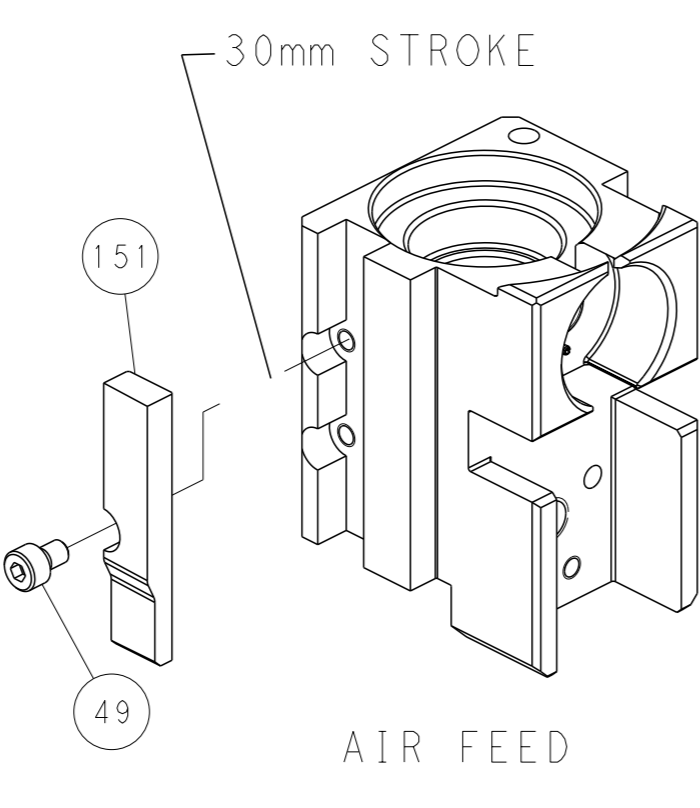
CAM POSITIONS



MECHANICAL
POST FEED



MECHANICAL
PRE FEED



AIR FEED

PACIFIC VERSION
 Shown on sheets 3 of 4 & 4 of 4
 (Atlantic version shown on sheets 1 of 4 & 2 of 4)

| | | | | |
|---|--|--|--|---|
| <small>THIS DRAWING IS A CONTROLLED DOCUMENT FOR TYCO ELECTRONICS CORPORATION. IT IS SUBJECT TO CHANGE AND THE CONTROLLER'S ENGINEERING DEPARTMENT SHOULD BE CONTACTED FOR THE LATEST REVISION.</small> | | OWN: B. WEAVER CHK: G. BAILEY APVD: G. BAILEY PRODUCT SPEC: - APPLICATION SPEC: - WEIGHT: - Customer Accessible Production Drawing | DATE: 13MAY2015 DATE: 13MAY2015 DATE: 13MAY2015 SCALE: 1:2 SHEET 4 of 4 REV B | NAME: Ocean Side Feed Applicator SIZE: A1 CAGE CODE: 00779 DRAWING NO: C=2266789 RESTRICTED TO: - |
|---|--|--|--|---|