

SPICE-Equivalent circuit model library

Table 1. Equivalent circuit data

Part Number	L (μ H)	F _{res} (MHz)	C1 (pF)	R1 (Ω)	R2 Nominal DCR of winding (Ω)
DR1030-1R1-R	1.1	158.4	0.92	5650.93	0.007
DR1030-1R8-R	1.9	113.5	1.03	7549.56	0.009
DR1030-2R8-R	2.8	89.6	1.13	9272.05	0.012
DR1030-3R9-R	3.9	73.2	1.21	11052.14	0.017
DR1030-5R2-R	5.2	61.4	1.29	12872.53	0.023
DR1030-6R8-R	6.8	52.1	1.37	14839.25	0.025
DR1030-8R2-R	8.4	45.8	1.44	16597.78	0.028
DR1030-100-R	10.4	40.2	1.50	18587.02	0.040
DR1030-150-R	14.8	32.4	1.63	22408.91	0.057
DR1030-220-R	22	25.5	1.77	27648.15	0.096
DR1030-330-R	33	19.9	1.94	34276.34	0.113
DR1030-470-R	47	16.0	2.10	41342.23	0.167
DR1030-680-R	66.6	13.0	2.26	49730.57	0.253
DR1030-820-R	82	11.4	2.37	55526.90	0.318
DR1030-101-R	100	10.1	2.47	61685.36	0.375
DR1030-121-R	120	9.1	2.58	67943.54	0.502
DR1030-151-R	150	7.9	2.71	76473.41	0.583

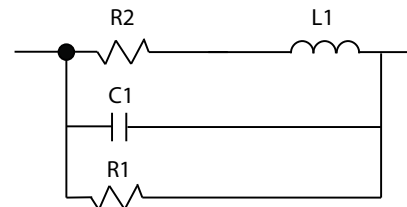


Figure 1. Equivalent circuit

Disclaimer

The data provided is for reference and is intended for evaluation purposes only. Users should verify all intended results in the end application.

Eaton
Electronics Division
 1000 Eaton Boulevard
 Cleveland, OH 44122
 United States
www.eaton.com/electronics

© 2018 Eaton
 All Rights Reserved
 Printed in USA
 Publication No. DR1030 Spice
 April 2018