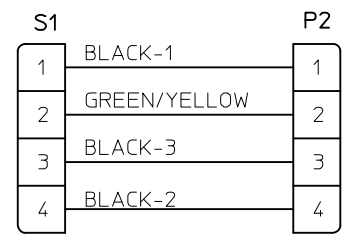
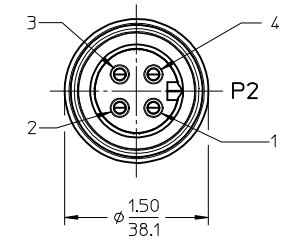


NOTES:

- 1) MATERIAL: SEE TABLE
- 2) FINISHES: SEE TABLE
- 3) WRAP LABEL IS MARKED WITH P/N, DATE CODE VOLTAGE & AMPERAGE
- 4) MATES WITH: QUICK CHANGE 4 POLE RECEPTACLE
- 5) ELECTRICAL DATA:
 10AWG UL TYPE: TC-ER STRANDED CABLE
 MAX VOLTAGE: 600V
 MAX CURRENT: 32A
 PROTECTION IP67 (WHEN MATED)
 TEMPERATURE RANGE: -20°C TO 90°C
- 6) PACKAGING:
 CABLE ASSEMBLIES ARE BAGGED SEPERATLY IN POLY BAGS WITH BAR CODE LABEL ATTACHED TO OUTSIDE OF BAG.
- 7) ASSEMBLY IS RoHS COMPLIANT



WIRING DIAGRAM



MALE FACE VIEW

PART NUMBER LEGEND

CC4033K17MXXXG

- DOUBLE END
- POLE COUNT: 4
- QC FEMALE 90 DEG TO MALE 90 DEG
- CABLE TYPE: 10 AWG TC ER, BLACK
- OVERMOLD COLOR: BLACK
- FINISHED LENGTH:
 - M001= .1M
 - M010= 1.0M
 - M100= 10.0M

ITEM	QTY.	DESCRIPTION	MATERIAL	FINISH
11	2	WARNING LABEL	VINYL	ORANGE/BLACK
10	1	WRAP LABEL	VINYL	BLACK/YELLOW
9	1	OVERMOLD, 90 DEG.	PVC	BLACK
8	1	COUPLING, MALE	ALUMINUM	CLEAR ANODIZE
7	4	CONTACT PIN	Cu ALLOY	GOLD PLATED
6	1	INSERT, MALE	PVC	BLACK
5	1	OVERMOLD, 90 DEG.	PVC	BLACK
4	1	COUPLING, FEMALE	ALUMINUM	CLEAR ANODIZE
3	4	CONTACT SOCKET	Cu ALLOY	GOLD PLATED
2	1	INSERT, FEMALE	PVC	BLACK
1	1	CABLE, 10/4 TC-ER (SEE NOTE 5)	TPE JACKET	BLACK

RELEASED EC NO: IPG2016-0989 DRAWN BY: DRWINRSTONE CHKD: BWOODMAN APPR: BWOODMAN 2016/02/02 2016/03/25	QUALITY SYMBOLS ▼=0 ▽=0	GENERAL TOLERANCES (UNLESS SPECIFIED)	DIMENSION STYLE IN/MM	SCALE 1:1	DESIGN UNITS INCH	THIRD ANGLE PROJECTION																
		<table border="1"> <thead> <tr> <th></th> <th>mm</th> <th>INCH</th> </tr> </thead> <tbody> <tr> <td>4 PLACES ±</td> <td>---</td> <td>±---</td> </tr> <tr> <td>3 PLACES ±</td> <td>---</td> <td>±---</td> </tr> <tr> <td>2 PLACES ±</td> <td>---</td> <td>±.01</td> </tr> <tr> <td>1 PLACE ±</td> <td>0.3</td> <td>±---</td> </tr> <tr> <td>0 PLACE ±</td> <td>---</td> <td>±---</td> </tr> </tbody> </table>		mm	INCH	4 PLACES ±	---	±---	3 PLACES ±	---	±---	2 PLACES ±	---	±.01	1 PLACE ±	0.3	±---	0 PLACE ±	---	±---	DRAWN BY: RSTONE DATE: 2016/02/02 CHECKED BY: _____ DATE: _____ APPROVED BY: BWOODMAN DATE: 2016/03/25 MATERIAL NO.: _____	TITLE: QUICK CHANGE CORD ASSY FEM 90 D TO MALE 90D 10/4 TPE CABLE
	mm	INCH																				
4 PLACES ±	---	±---																				
3 PLACES ±	---	±---																				
2 PLACES ±	---	±.01																				
1 PLACE ±	0.3	±---																				
0 PLACE ±	---	±---																				
DRAFT WHERE APPLICABLE MUST REMAIN WITHIN DIMENSIONS		THIS DRAWING CONTAINS INFORMATION THAT IS PROPRIETARY TO MOLEX INCORPORATED AND SHOULD NOT BE USED WITHOUT WRITTEN PERMISSION																				