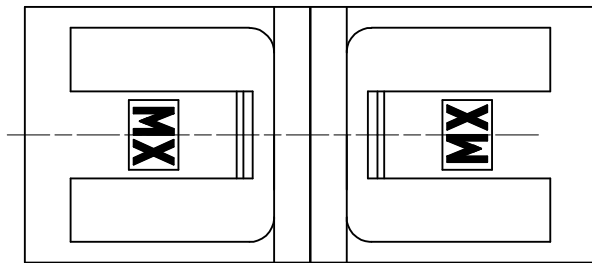
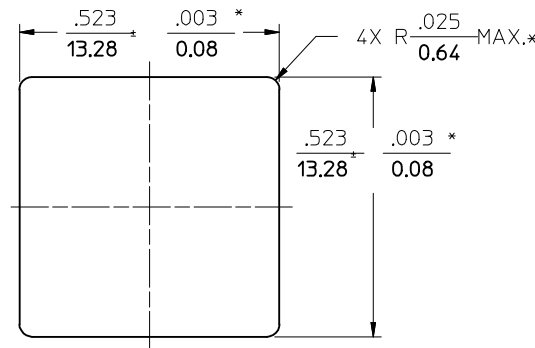
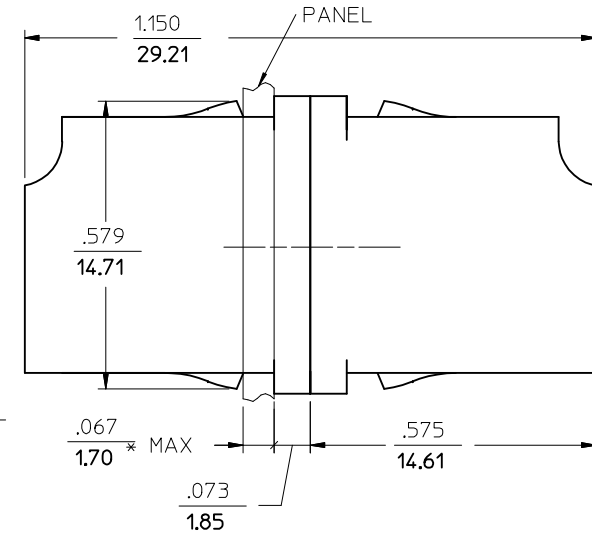
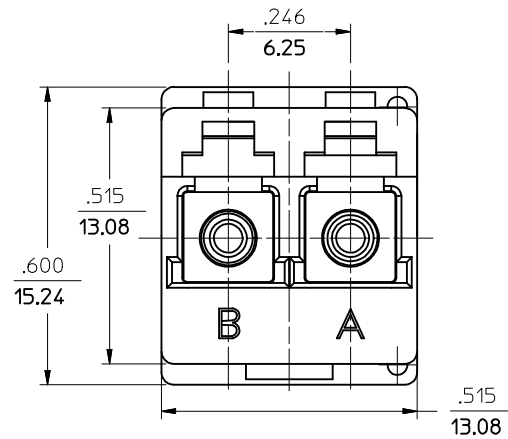


| ADAPTER P/N | COLOR | SPLIT SLEEVE MATERIAL |
|--------------|-------|-----------------------------|
| 106125-1100 | BLUE | ZIRCONIA - ZrO ₂ |
| 106125-0110 | BEIGE | Ph. Bronze |
| 106125-0111* | | |
| 106125-1150 | GREEN | ZIRCONIA - ZrO ₂ |
| 106125-0100 | BLUE | Ph. Bronze |
| 106125-1110 | BEIGE | ZIRCONIA - ZrO ₂ |
| 106125-0120 | AQUA | Ph. Bronze |
| 106125-1170 | BLACK | ZIRCONIA - ZrO ₂ |



(DUST CAPS ARE NOT SHOWN)

RECOMMENDED PANEL CUTOUT

PANEL THICKNESS $\frac{.067}{1.70}$ MAX.

NOTES:

- ALL DIMENSIONS ARE FOR REFERENCE ONLY. EXCEPT WHEN MARKED WITH (*).
- P/N 106125-0111 SHALL BE BULK PACKED IN QUANTITIES OF 100pcs.
- ALL POLYMERIC MATERIALS USED IN THIS ADAPTER HAVE UL94 RATING OF V-0.

| ENTER DESCRIPTION EC NO: MF2013-0244 DR: MARK PEVZNER 2012/10/29 CHKD: LGUMIN 2012/10/31 APPR: LGUMIN 2012/10/31 REV: | QUALITY SYMBOLS ▽=0 ▽=0 | GENERAL TOLERANCES (UNLESS SPECIFIED) <table border="1"> <thead> <tr> <th></th> <th>mm</th> <th>INCH</th> </tr> </thead> <tbody> <tr> <td>4 PLACES</td> <td>± .005</td> <td>± .0004</td> </tr> <tr> <td>3 PLACES</td> <td>± .004</td> <td>± .0003</td> </tr> <tr> <td>2 PLACES</td> <td>± .003</td> <td>± .0002</td> </tr> <tr> <td>1 PLACE</td> <td>± .002</td> <td>± .0001</td> </tr> <tr> <td>0 PLACE</td> <td>± .001</td> <td>± .0000</td> </tr> </tbody> </table> | | mm | INCH | 4 PLACES | ± .005 | ± .0004 | 3 PLACES | ± .004 | ± .0003 | 2 PLACES | ± .003 | ± .0002 | 1 PLACE | ± .002 | ± .0001 | 0 PLACE | ± .001 | ± .0000 | DIMENSION STYLE IN/MM DRAWN BY PGIBL IN DATE 2005/10/04 CHECKED BY DATE APPROVED BY DATE 2005/10/04 | SCALE 4:1 DESIGN UNITS INCH THIRD ANGLE PROJECTION |
|---|-------------------------------|---|--|----|------|----------|--------|---------|----------|--------|---------|----------|--------|---------|---------|--------|---------|---------|--------|---------|---|--|
| | | mm | INCH | | | | | | | | | | | | | | | | | | | |
| | 4 PLACES | ± .005 | ± .0004 | | | | | | | | | | | | | | | | | | | |
| | 3 PLACES | ± .004 | ± .0003 | | | | | | | | | | | | | | | | | | | |
| 2 PLACES | ± .003 | ± .0002 | | | | | | | | | | | | | | | | | | | | |
| 1 PLACE | ± .002 | ± .0001 | | | | | | | | | | | | | | | | | | | | |
| 0 PLACE | ± .001 | ± .0000 | | | | | | | | | | | | | | | | | | | | |
| ANGULAR ±1/2° DRAFT WHERE APPLICABLE MUST REMAIN WITHIN DIMENSIONS | | MATERIAL NO. SEE TABLE SIZE B | TITLE LC DUPLEX ADAPTER DOCUMENT NO. SD-106125-X1X0 SHEET NO. 1 OF 1 | | | | | | | | | | | | | | | | | | | |
| THIS DRAWING CONTAINS INFORMATION THAT IS PROPRIETARY TO MOLEX INCORPORATED AND SHOULD NOT BE USED WITHOUT WRITTEN PERMISSION | | | | | | | | | | | | | | | | | | | | | | |